

# UL 1310

ISBN 1-55989-589-6

## Class 2 Power Units





Northbrook, Illinois • (847) 272-8800  
Malville, New York • (516) 271-6200  
Santa Clara, California • (408) 985-2400  
Research Triangle Park,  
North Carolina • (919) 549-1400  
Camas, Washington • (360) 817-3500

Underwriters Laboratories Inc., founded in 1894, is chartered as a not-for-profit organization without capital stock, under the laws of the State of Delaware, to establish, maintain, and operate laboratories for the examination and testing of devices, systems and materials to determine their relation to hazards to life and property, and to ascertain, define and publish standards, classifications and specifications for materials, devices, products, equipment, constructions, methods, and systems affecting such hazards

UL Standards for Safety are developed under a procedure which provides for participation and comment from the affected public as well as industry. The procedure takes into consideration a survey of known existing standards and the needs and opinions of a wide variety of interests concerned with the subject matter of the standard. Thus manufacturers, consumers, individuals associated with consumer-oriented organizations, academicians, government officials, industrial and commercial users, inspection authorities, insurance interests and others provide input to UL in the formulating of UL Standards for Safety, to keep them consonant with social and technological advances.

A not-for-profit organization  
dedicated to public safety and  
committed to quality service

September 25, 1998 - UL 1310

v1

Underwriters Laboratories Inc. (UL)  
333 Pfingsten Road  
Northbrook, IL 60062-2096

UL Standard for Safety  
for  
Class 2 Power Units, UL 1310

Fourth Edition, Dated July 28, 1994

**Revisions** This Standard contains revisions through and including September 25, 1998. UL is in the process of converting its Standards for Safety to the Standard Generalized Markup Language (SGML). SGML - an international standard (ISO 8879:1986) - is a descriptive markup language that describes a document's structure and purpose, rather than its physical appearance on the page. Significant benefits that will result from UL's use of SGML are increased productivity, reduced turnaround times, and data and information consistency, reusability, shareability, and portability. The changes noted in these revised pages are needed to modify the format and layout of this Standard to allow it to be converted to SGML. These editorial changes are now in effect.

A change is indicated by a note following the affected item. The note is preceded and followed by an asterisk.

The revised requirements are substantially in accordance with UL's Bulletins on this subject dated February 23, 1998 and June 26, 1998. These bulletins are now obsolete and may be discarded.

The revisions dated September 25, 1998 include a reprinted title page (page i) for this Standard.

The revisions dated September 25, 1998 were also issued to remove the "94" prefix from the flammability classifications. This type of flame classification has become familiar globally, therefore there is no need to retain the "94" designation.

As indicated on the title page (page i), this UL Standard for Safety is an American National Standard. Attention is directed to the note on the title page of this Standard outlining the procedures to be followed to retain the approved text of this ANSI/UL Standard.

The master for this Standard at UL's Northbrook Office is the official document insofar as it relates to a UL service and the compliance of a product with respect to the requirements for that product and service, or if there are questions regarding the accuracy of this Standard.

UL's Standards for Safety are copyrighted by UL. Neither a printed copy of a Standard, nor the distribution diskette for a Standard-on-Diskette and the file for the Standard on the distribution diskette should be altered in any way. All of UL's Standards and all copyrights, ownerships, and rights regarding those Standards shall remain the sole and exclusive property of UL.

All rights reserved. No part of this publication may be reproduced, stored in a retrieval system, or transmitted in any form by any means, electronic, mechanical, photocopying, recording, or otherwise without prior permission of UL.

Revisions of UL Standards for Safety are issued from time to time. A UL Standard for Safety is current only if it incorporates the most recently adopted revisions.

UL provides this Standard "as is" without warranty of any kind, either expressed or implied, including but not limited to, the implied warranties of merchantability or fitness for any purpose.

In no event will UL be liable for any special, incidental, consequential, indirect or similar damages, including loss of profits, lost savings, loss of data or any other damages arising out of the use of or the inability to use this Standard, even if UL or an authorized UL representative has been advised of the possibility of such damage. In no event shall UL's liability for any damage ever exceed the price paid for this Standard, regardless of the form of the claim.

UL will attempt to answer support requests concerning wordPerfect, Envoy, and Standards-on-Diskette. However, this support service is offered on a reasonable efforts basis only, and UL may not be able to resolve every support request. UL supports a Standards-on-Diskette only if it is used under the conditions and operating systems for which it is intended. UL's support policies may change from time-to-time without notification.

UL reserves the right to change the format, presentation, file types and formats, delivery methods and formats, and the like of both its printed and electronic Standards without prior notice.

Standards-on-Diskette purchasers agree to defend, indemnify, and hold UL harmless from and against any loss, expense, liability, damage, claim, or judgement (including reasonable attorney's fees) resulting from any error or deviation introduced while purchaser is storing a Standard-on-Diskette on the purchaser's computer system.

If a single-user version Standards-on-Diskette was purchased, one copy of this Standard may be stored on the hard disk of a single personal computer, or on a single LAN file-server or the permanent storage device of a multiple-user computer in such a manner that this Standard may only be accessed by one user at a time and for which there is no possibility of multiple concurrent access. The original distribution diskette should be stored in a safe place.

If a multiple-user version Standards-on-Diskette was purchased, one copy of the Standard may be stored on a single LAN file-server, or on the permanent storage device of a multiple-user computer. The number of concurrent users shall not exceed the number of users authorized for the Standards-on-Diskette version. The original distribution diskette should be stored in a safe place.

Standards-on-Diskette are intended for on-line use, such as for viewing the requirements of a Standard, conducting a word search, and the like. Only one copy of the Standard may be printed from each single-user version of a Standards-on-Diskette. Only one copy of the Standard may be printed for each authorized user of a multiple-user version of a Standards-on-Diskette. An employee of an organization purchasing a Standard-on-Diskette can make a copy of the page or pages being viewed for their own fair and/or practical internal use. Because of differences in the computer/software/printer setup used by UL and those of Standards-on-Diskette purchasers, the printed copy obtained by a purchaser may not look exactly like the on-line screen view or the printed Standard.

The requirements in this Standard are now in effect, except for those paragraphs, sections, tables, figures and/or other elements of the Standard having future effective dates as indicated in the note following the affected item. The prior text for requirements that have been revised and that have a future effective date are located after the Standard, and are preceded by a "SUPERSEDED REQUIREMENTS" notice.

New product submittals made prior to a specified future effective date will be judged under all of the requirements in this Standard including those requirements with a specified future effective date, unless the applicant specifically requests that the product be judged under the current requirements. However, if the applicant elects this option, it should be noted that compliance with all the requirements in this Standard will be required as a condition of continued Listing, Recognition, and Follow-Up Services after the effective date, and understanding of this should be signified in writing.

Copyright 1998 Underwriters Laboratories Inc.

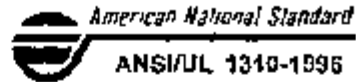
This Standard consists of pages dated as shown in the following checklist:

Page	Date
tr1 - tr4	September 25, 1998
1	July 28, 1994 (Reprinted September 25, 1998)
2, 3	September 25, 1998
4	July 28, 1994
5, 6, 6A, 6B	August 2, 1996
7, 8	July 28, 1994

9	July 7, 1995
10, 11	July 28, 1994
12, 12A, 12B	July 7, 1995
13, 14	July 28, 1994
15	August 2, 1996
16	July 28, 1994
17, 18, 18A, 18B, 19	July 7, 1995
20, 20A, 20B	August 2, 1996
21	July 28, 1994
22, 22A, 22B	September 25, 1998
23	July 28, 1994
24, 24A, 24B, 25 - 27	September 25, 1998
28	July 28, 1994
29, 30, 30A, 30B	August 2, 1996
31 - 34	July 28, 1994
35, 36	September 25, 1998
36A, 36B	August 2, 1996
37	July 28, 1994
38	July 7, 1995
39	July 28, 1994
40	July 7, 1995
41 - 44	July 28, 1994
45	July 7, 1995
46	July 28, 1994
47	August 2, 1996
48, 48A, 48B	July 7, 1995
49, 50	July 28, 1994
51, 52	September 25, 1998
52A, 52B, 53, 54, 54A, 54B	July 7, 1995
55, 56	July 28, 1994
57	August 2, 1996
58 - 60	May 25, 1995
A1, A2	July 28, 1994
sr1, sr2	September 25, 1998

No Text on This Page

JULY 28, 1994  
(Title Page Reprinted September 25, 1986)



1

UL 1310

Standard for

Class 2 Power Units

The first and second edition were titled Standard for Direct Plug-In Transformer Units

First Edition - May, 1981  
Second Edition - September, 1986  
Third Edition - August, 1992

Fourth Edition

July 28, 1994

Approval as an American National Standard (ANSI) covers the numbered paragraphs on pages dated July 28, 1994. These pages should not be discarded when revised or additional pages are issued if it is desired to retain the ANSI approved text.

An effective date included as a note immediately following certain requirements is one established by Underwriters Laboratories Inc.

Approved as ANSI/UL 1310-1986, March 28, 1986  
Approved as ANSI/UL 1310-1986, February 8, 1986

Revisions of this standard will be made by issuing revised or additional pages bearing their date of issue. A UL Standard is current only if it incorporates the most recently adopted revisions, all of which are itemized on the transmittal notice that accompanies the latest set of revised requirements.

ISBN 1-55989-589-6

COPYRIGHT © 1981, 1993 UNDERWRITERS LABORATORIES INC

**CONTENTS**

**FOREWORD**

**INTRODUCTION**

1 Scope	5
2 Glossary	5
3 Components	7
4 General	7

**CONSTRUCTION**

5 Mechanical Assembly	7
6 Enclosure	12A
7 Protection Against Corrosion	14
8 Switches	14
9 Protective Devices	14
10 Components	16
11 Coil Insulation	16
12 Input Connections	19
13 Output Connections	20
14 Accessibility of Live Parts	21
15 Live Parts	25
16 Strain Relief	25
17 Internal Wiring	25
18 Separation of Circuits	26
19 Insulating Materials	26
20 Printed Wiring Boards	27
21 Grounding	27
22 Spacings	28

**PERFORMANCE**

23 General	30A
24 Leakage Current Test	33
25 Leakage Current Test and Dielectric Voltage Withstand Test After Humidity Exposure	36
26 Maximum Output Voltage Test	36
27 Maximum Input Test	36
28 Output Current and Power Test	35
29 Calibration of Overcurrent Protection Devices Test	38
30 Full-Load Output Current Test	39
31 Normal Temperature Test	39
32 Dielectric Voltage Withstand Test	42
33 Endurance Test on Overcurrent- and Overtemperature-Protective Devices	44
34 Repeat Dielectric Voltage Withstand Test	44
35 Overload and Endurance Tests on Switches and Controls	44
36 Overload Test on Secondary Switches	44
37 Operation Test	45
38 Abnormal Tests	45
39 Tests on Insulating Materials	49



40 Strain Relief Test	50
40A Push-Back Relief Test	51
41 Direct Plug-In Blade Secureness Test	51
42 Direct Plug-In Security of Input Contacts Test	51
43 Security of Output Connectors Test	52
44 Abuse Tests	52A
45 Bonding Conductor Test	54

**MANUFACTURING AND PRODUCTION TESTS**

46 Dielectric Voltage Withstand Test	54
47 Grounding Continuity Test	55

**RATING**

48 General	55
------------	----

**MARKING**

49 Details	56
------------	----

**INSTRUCTIONS**

50 Instruction Manual	59
-----------------------	----

**APPENDIX A**

Standards for Components	a1
--------------------------	----

## FOREWORD

A This Standard contains basic requirements for products covered by Underwriters Laboratories Inc. (UL) under its Follow-Up Service for this category within the limitations given below and in the Scope section of this Standard. These requirements are based upon sound engineering principles, research, records of tests and field experience, and an appreciation of the problems of manufacture, installation, and use derived from consultation with and information obtained from manufacturers, users, inspection authorities, and others having specialized experience. They are subject to revision as further experience and investigation may show is necessary or desirable.

B The observance of the requirements of this Standard by a manufacturer is one of the conditions of the continued coverage of the manufacturer's product.

C A product which complies with the text of this Standard will not necessarily be judged to comply with the Standard if, when examined and tested, it is found to have other features which impair the level of safety contemplated by these requirements.

D A product employing materials or having forms of construction differing from those detailed in the requirements of this Standard may be examined and tested according to the intent of the requirements and, if found to be substantially equivalent, may be judged to comply with the Standard.

E UL, in performing its functions in accordance with its objectives, does not assume or undertake to discharge any responsibility of the manufacturer or any other party. The opinions and findings of UL represent its professional judgment given with due consideration to the necessary limitations of practical operation and state of the art at the time the Standard is processed. UL shall not be responsible to anyone for the use of or reliance upon this Standard by anyone. UL shall not incur any obligation or liability for damages, including consequential damages, arising out of or in connection with the use, interpretation of or reliance upon this Standard.

F Many tests required by the Standards of UL are inherently hazardous and adequate safeguards for personnel and property shall be employed in conducting such tests.

## INTRODUCTION

### 1 Scope

1.1 These requirements cover direct plug-in Class 2 power units intended for connection to a 15-ampere, nominal 120- or 240- volt ac branch circuit, and cord-connected Class 2 power units intended for connection to a 15- or 20- ampere ac branch circuit with a potential of 150 volts or less to ground. These products utilize an isolating transformer and are able to incorporate rectifiers and other components to provide a source of alternating- or direct-current (dc) supply. These products are able to be provided with an optional dc input jack, intended to be powered by a vehicle battery adapter. These products provide Class 2 power levels in accordance with the National Electrical Code, ANSI/NFPA 70, and are intended primarily to provide power to low voltage, electrically operated devices.

\*1.1 revised August 2, 1995\*

1.2 These requirements cover products whose input power does not exceed 660 W under any possible condition of output loading.

1.3 These requirements do not cover the effect that a power unit may have on the equipment or system to which it is connected.

1.4 A product marked for a specific end-use (such as for use with audio-, radio-, or video-type equipment, medical or dental equipment, or tools) may be subject to additional requirements found in the applicable end-product standard. See 49.1.4.

1.5 These requirements do not cover products intended to charge batteries for starter motors used to start engines. Products of this type are covered by UL 1236, the Standard for Battery Chargers for Charging Engine-Starter Batteries.

1.6 These requirements cover Class 2 products, as defined in this standard, intended for use with toys. Products of this type shall also comply with UL 697, the Standard for Toy Transformers.

1.6 revised July 7, 1995

1.7 These requirements do not cover products with outputs other than Class 2, nor battery chargers intended to charge batteries employed in wheel chairs or similar types of mobility aids. Products of this type are covered by UL 1012, the Standard for Power Units Other Than Class 2.

1.8 These requirements do not cover products consisting of a Class 2 transformer intended for field connection to a source of supply. Products of this type are covered by UL 1585, the Standard for Class 2 and Class 3 Transformers.

1.8.1 These requirements do not cover products powered solely by a dc source. Products of this type are covered by UL 458, Standard for Power/Inverters and Power/Inverter Systems for Land Vehicles and Marine Craft, or by other requirements appropriate for the intended application.

\*1.8.1 added August 2, 1995\*

1.9 A product that contains features, characteristics, components, materials, or systems new or different from those in use when the standard was developed, and that involve a risk of fire, electric shock, or injury to persons, shall be evaluated using the appropriate additional component and end-product requirements as determined necessary to maintain the level of safety for the user of the product as originally anticipated by the intent of this standard.

### 2 Glossary

2.1 For the purpose of this standard, the following definitions shall apply.

**2.2 BONDING CONDUCTOR** - A conductor by which dead metal parts are bonded (connected) to the grounding means

**2.3 CLASS 2** - A source having limited voltage and energy capacity. Requirements for voltage and energy capacity limitations are as indicated in this standard. See the Maximum Output Voltage Test, Section 26, and the Output Current and Power Test, Section 28

**2.4 CONDUCTIVELY CONNECTED** - A part is conductively connected to another part if the current between the parts exceeds the limit for leakage current specified in Leakage Current Test, Section 24

**2.4.1 CONSECUTIVE BATTERY CHARGER** - A battery charger whose charging cycle is completed in four hours or less

\*2.4.1 added August 2, 1996\*

**2.5 DIRECT CURRENT (DC)** - A voltage or current waveform where the instantaneous value does not vary

**2.6 ENCLOSURE** - Any surface or surrounding structure that prevents access to a real or potential risk of electric shock or injury to persons

**2.7 ENERGY LIMITING CIRCUIT/ENERGY LIMITING IMPEDANCE** - A circuit or component depended on to limit an output to Class 2 levels or to limit energy to an accessible part. Reliability of circuit components shall be determined unless the unit is tested as specified in 38.6.1

\*2.7 revised August 2, 1996\*

**2.8 INDOOR USE** - Use in an indoor location or where wet contact is not likely to occur

**2.9 INJURY TO PERSONS** - The words "injury to persons" are in reference to physical harm to persons other than the physiological effects of electric shock.

**2.10 RISK OF ELECTRIC SHOCK** - A risk of electric shock is considered to exist if

a) The voltage between parts exceeds the value specified in 14.2.2, and

b) The current between the parts measured in the Leakage Current Test, Section 24, exceeds 0.5 mA

**2.10.1 TAB, INTEGRAL** (including a mounting tab) - A molded on or otherwise mechanically secured tab provided as part of the enclosure. An integral tab is usually not provided as part of the required enclosure, but may be provided for compliance with certain requirements of this standard

2.10.1 added July 7, 1995

**2.11 UNIT** - For the purposes of this standard, a unit is either a direct plug-in unit or a cord connected unit unless specified otherwise.

**2.12 UNIT, CORD-CONNECTED** - A power unit which employs a cord and plug assembly for connection to the branch circuit

**2.13 UNIT, DIRECT PLUG-IN** - A power unit which employs a blade assembly on the enclosure for connection to the branch circuit

**2.14 UNIT, LINEAR DESIGN** - A unit employing a branch circuit frequency transformer design where operation is not dependent on circuitry

**2.15 UNIT, PORTABLE** - A unit other than a stationary unit or semipermanent mounted unit

2.16 UNIT, SEMIPERMANENT MOUNTED - A direct plug-in unit provided with a mounting tab. For the purpose of this standard, semipermanent mounted units shall also comply with the requirements for portable units unless otherwise specified.

2.17 UNIT, STATIONARY - A cord- and plug-connected unit that is

- a) Intended to be fastened in place,
- b) Intended to be located in a dedicated space, or
- c) Not easily moved.

2.18 UNIT, SWITCH MODE DESIGN - A unit employing a high frequency transformer design where transformer operation is dependent on an inverter circuit.

2.19 WORKING VOLTAGE - The highest voltage to which the insulation under consideration is, or is able to be, subjected when the equipment is operating at its rated voltage under conditions of normal use.

\*2.19 added August 2, 1996\*

No Text on This Page

### 3 Components

3.1 Except as indicated in 3.2, a component of a product covered by this standard shall comply with the requirements for that component. See Appendix A for a list of standards covering components generally used in the products covered by this standard.

3.2 A component need not comply with a specific requirement that

- a) Involves a feature or characteristic not needed in the application of the component in the product covered by this standard, or
- b) Is superseded by a requirement in this standard.

3.3 A component shall be used in accordance with its recognized rating established for the intended conditions of use.

3.4 Specific components are recognized as being incomplete in construction features or restricted in performance capabilities. Such components are intended for use only under limited conditions, such as certain temperatures not exceeding specified limits, and shall be used only under those specific conditions for which they have been recognized.

### 4 General

#### 4.1 Units of measurements

4.1.1 If a value for measurement is followed by a value in other units in parentheses, the second value may be only approximate. The first stated value is the requirement.

4.1.2 Unless otherwise stated, values of current and voltage are rms.

#### 4.2 Undated references

4.2.1 Any undated reference to a code or standard appearing in the requirements of this standard shall be interpreted as referring to the latest edition of the code or standard.

#### 4.3 Terminology

4.3.1 The term "power unit" as used in these requirements refers to all power supplies, battery chargers, and transformers covered by these requirements.

## CONSTRUCTION

### 5 Mechanical Assembly

5.1 A unit shall be formed and assembled so that it will have the strength and rigidity necessary to resist the abuses to which it is likely to be subjected without producing or increasing a risk of fire, electric shock, or injury to persons due to total or partial collapse with resulting reduction of spacings, loosening or displacement of parts, or other serious defects. See also 4.4.1.1.

5.2 A unit shall have all parts reliably secured in place.

5.3 An enclosure, an opening, a frame, a guard, a knob, a handle or the like shall not be sufficiently sharp to cause a risk of injury in normal maintenance or use.

5.4 A unit shall be constructed so that it will not be necessary to open or remove the enclosure when the unit is used as intended.

5.5 Each lampholder, switch, and similar component shall be mounted securely and shall be prevented from turning by more than friction between surfaces. For example, the use of a lock washer is acceptable to prevent the turning of a device having a single hole mounting means.

*Exception No. 1* A lampholder of a type in which the lamp cannot be replaced (such as a neon pilot or indicator light in which the lamp is sealed in by a nonremovable jewel) need not be prevented from turning if rotation cannot reduce spacings below the minimum acceptable values or produce stress on an electrical connection.

*Exception No. 2* A switch or other similar component need not comply with this requirement if the turning of such a component and servicing of the part introduces no additional risk of fire or electric shock, such as reduced spacings below minimum acceptable values or stress on an electrical connection.

5.6 A replaceable lamp in a unit shall be wired in the secondary circuit, and shall be replaceable without opening the enclosure. There shall be no primary live part accessible to contact during lamp replacement.

5.7 A nonreplaceable pilot lamp, such as an indicating-type overload- or short-circuit protector, a neon light, or an indicator light, is one in which the lamp is sealed-in, such as by a nonremovable jewel.

5.8 A switch in the primary circuit or an overcurrent-protective device shall be located within the unit enclosure in such a manner as not to be accessible or exposed to tampering nor subject to damage during normal use. This requirement does not apply to the actuating means of a switch.

5.9 If the exterior part of the switch or control forms part of a unit enclosure, the part shall be subjected to the Abuse Tests, Section 44.

5.10 The requirements in 5.8 also apply to the actuating means - toggle, handle, or the like - if the dislodging of such part exposes live parts or film-coated magnet wire that can be contacted as specified in Accessibility of Live Parts, Section 14.

5.11 The maximum acceptable moment, center of gravity, dimensions, and weight of a direct plug-in unit shall comply with the following requirements (See also 5.12 and 5.13).

- a) The quotient of WY/Z shall not exceed 48 ounces (1361 g)
- b) The quotient of WY/S shall not exceed 48 ounces (1361 g)
- c) The product of WX shall not exceed 80 ounce-inches (0.56 N m)
- d) The weight of a unit shall not exceed 28 ounces (794 g)



5.12 Definitions for the symbols used in 5.11 are as follows:

- W is the weight of the unit in ounces (g)
- Y is the distance illustrated in Figure 5.1 in inches (mm)
- Z is the lesser of the two distances,  $Z_1$  or  $Z_2$ , as illustrated in Figure 5.1 in inches (mm)
- S is the lesser of the two distances,  $S_1$  or  $S_2$ , as illustrated in Figure 5.1 in inches (mm)
- X is the greater of the two distances,  $X_1$  or  $X_2$ , as illustrated in Figure 5.1 in inches (mm)

5.13 The moment and weight specified in 5.11 are to be determined as follows:

- a) For units with an output cord, the cord is to be cut off at the enclosure, or at the strain-relief means if the strain-relief means is outside the enclosure.
- b) For units with directly mounted accessories, the values are to be measured with the accessories in place.
- c) An integral tab is not to be included in measurements of the linear dimensions for the purpose of determining moments unless:
  - 1) The tab and enclosure withstand the impact described in 44.2.1 with one impact on the tab itself, without deformation, and
  - 2) For a polymeric enclosed unit having an integral tab, the tab and enclosure do not distort at temperatures to which the material may be subjected under conditions of normal and abnormal use as determined by the mold stress relief distortion test in the Standard for Polymeric Materials - Use in Electrical Equipment Evaluations, UL 746C.

\*5.13 revised July 7, 1995\*

5.14 When inserted in a duplex receptacle, no part of a direct plug-in unit, including an integral tab or output wiring, shall interfere with full insertion of an attachment plug into the adjacent receptacle. See Figure 5.2 and Figure 5.3.

*Exception: A unit that renders the adjacent receptacle completely unusable in any one mounting position need not comply with 5.14.*

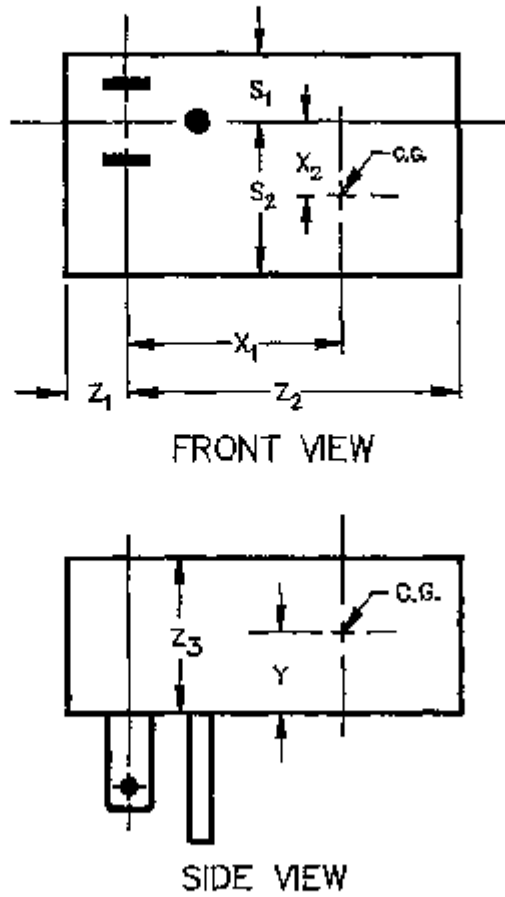
\*5.14 revised July 7, 1995\*

5.15 A portable cord-connected unit intended for wall mounting shall employ key hole slots or the equivalent as a mounting means.

5.16 A mounting tab shall not be provided with a direct plug-in unit unless all of the following conditions are met:

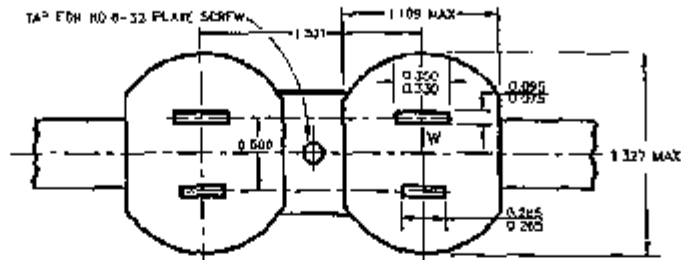
- a) The unit is intended for use on a 15-ampere, 125-volt receptacle.
- b) A screw is provided and constructed so as to secure the mounting tab of the unit to a duplex receptacle that has a center screw (see Figure 5.2).
- c) For a unit without a grounding pin, the mounting tab is constructed so that the unit may be mounted to both grounding and nongrounding receptacles, and
- d) The unit is marked as specified in 49.2.4.

Figure 5.1  
Dimensions of a direct plug-in unit



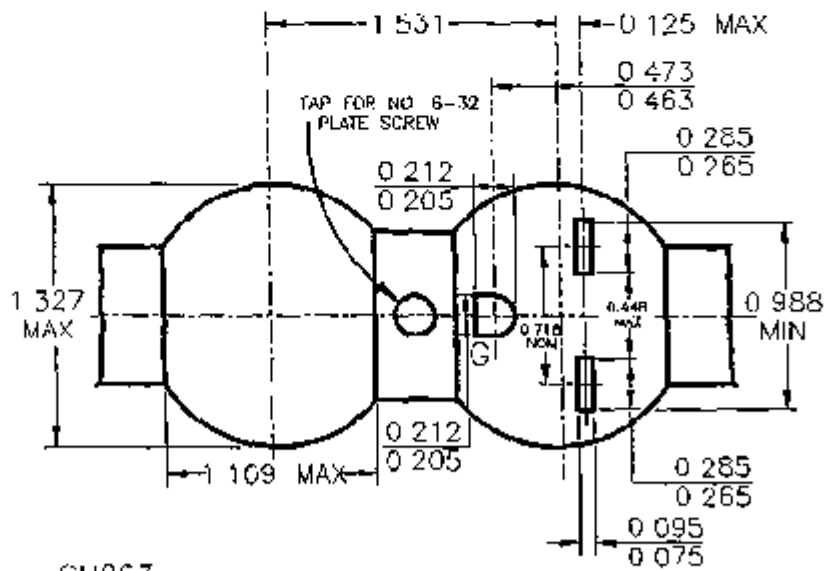
C.G. = Center of Gravity

**Figure 5.2**  
**125V, 15A Duplex receptacle**



SM283A

**Figure 5.3**  
**250V, 15A Duplex receptacle**



SM283

5.17 The enclosure of a unit shall be capable of being gripped for removal from the receptacle to which it is connected, and the perimeter of the face section from which the blades project shall not be less than 5/16 inch (7.9 mm) from any point on either blade. In order to determine compliance with this requirement for units with rounded edges, the perimeter of the face section is considered to be the point at which the articulate probe is able to access as shown in Figure 5.5.

*Exception: For tab-mounted units, the perimeter of the face section may be not less than 1/4 inch (6.4 mm) from any point on either blade.*

\*5.17 revised July 7, 1995\*

5.18 With reference to 5.17, for an extension from the face for mechanical support of the blades provided as shown in Figure 5.4, the point of measurement is to be determined by application of the articulate probe, Figure 14.2, as shown in Figure 5.5.

\*5.18 revised July 7, 1995\*

**Figure 5.4**  
**Extension for mechanical support of blades**

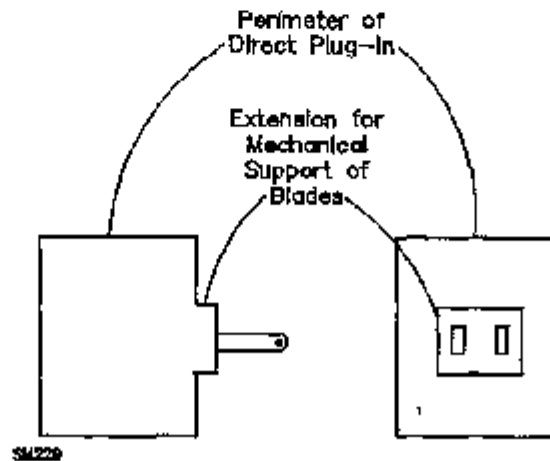
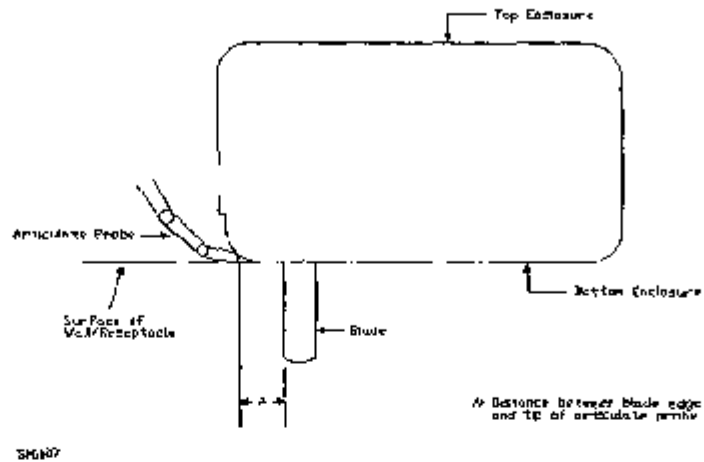


Figure 5.5  
Determination of perimeter of units with rounded edges



\*Figure 5.5 added July 7, 1995\*

## 6 Enclosure

6.1 A unit shall be provided with an enclosure that shall house all current-carrying parts that pose a risk of electric shock. The enclosure shall have the strength and properties necessary to reduce the risk of mechanical damage to the various parts.

6.2 A unit shall have no openings larger than those complying with 14.2.1.

6.3 If an acceptable grade of vulcanized fiber is used as part of the enclosure for the support of secondary parts (terminals and the like) that do not present a risk of fire or electric shock, the amount of fiber shall not be more than is necessary to support the secondary parts in question. The fiber shall not be less than 1/32 inch (0.8 mm) thick and shall not introduce a risk of fire, electric shock, or injury to persons as a result of abuse. See 44.1.1.

No Text on This Page

6.4 An enclosure constructed of sheet metal shall be formed from stock having a thickness not less than that specified in Table 6.1. The thickness of enclosure sheet metal other than steel or aluminum shall not be less than that specified in Table 6.1 for uncoated steel and shall have the necessary strength and rigidity.

*Exception: For transformers with end bells forming part of the enclosure, sheet steel having a thickness of not less than 0.020 inch (0.51 mm) if uncoated, or 0.023 inch (0.58 mm) if zinc coated, may be used if the drawn end bells have maximum dimensions of 2-1/4 inches (57.2 mm) on the flat portion and 1-1/2 inches (38.1 mm) at the base of the drawn portion.*

**Table 6.1  
Minimum acceptable thickness of enclosure metal**

Metal	At small, flat, unreinforced surfaces and at surfaces of a shape or size to provide adequate mechanical strength		At relatively large unreinforced flat surfaces	
	Inches	(Millimeters)	Inches	(Millimeters)
Die-cast	3/64	(1.2)	5/64	(2.0)
Cast malleable iron	1/16	(1.6)	3/32	(2.4)
Other cast metal	3/32	(2.4)	1/8	(3.2)
Uncoated sheet steel	0.026	(0.65)	0.025	(0.65)
Galvanized sheet steel	0.029	(0.74)	0.029	(0.74)
Nonferrous sheet metal other than copper	0.036	(0.91)	0.036	(0.91)
Copper	0.033	(0.84)	0.033	(0.84)

6.5 In addition to the performance tests specified in this Standard, the factors to be considered when evaluating a polymeric enclosure are:

- a) Material Flammability properties,
- b) Resistance to arcing properties, and
- c) Moisture absorptive properties.

These properties shall comply with the requirements in the Standard for Polymeric Materials - Use in Electrical Equipment Evaluations, UL 746C. For the purpose of this requirement, a semipermanent mounted unit is to be considered a portable unit.

6.6 A conductive coating applied to a nonmetallic surface such as the inside surface of a cover, enclosure, and the like shall comply with the appropriate requirements in the Standard for Polymeric Materials - Use in Electrical Equipment Evaluations, UL 746C, unless it can be determined that flaking or peeling of the coating does not result in a reduction of spacings or the bridging of live parts that may result in a risk of fire, electric shock, or injury to persons.

6.7 An adhesive used in the assembly of the enclosure shall be investigated as specified in the Standard for Polymeric Materials - Use in Electrical Equipment Evaluations, UL 746C

*Exception: A method utilizing fusion techniques, such as solvent cementing, ultrasonic welding, electromagnetic induction, and thermal welding need not be investigated*

## 7 Protection Against Corrosion

7.1 Except as noted in 7.2, iron and steel parts shall be protected against corrosion by galvanizing, plating, enameling, or other equivalent means if the corrosion of such unprotected parts would be likely to result in a risk of fire, electric shock, or injury to persons

*Exception: A part made of stainless steel need not be protected against corrosion*

7.2 The requirement in 7.1 applies to all enclosing cases or to other parts upon which intended mechanical operation may depend. It does not apply to laminations and small minor parts of iron or steel, such as washers, screws, and bolts, that are not current carrying if the corrosion of such unprotected parts would not be likely to result in a risk of fire, electric shock, or injury to persons, or result in the device not operating as intended.

## 8 Switches

8.1 The requirements in 8.2 - 8.8 apply to switches not in a Class 2 circuit, and to switches in a Class 2 circuit the breakdown of which electrically or mechanically is likely to introduce a risk of fire or electric shock

8.2 A switch subjected to a temperature higher than 50°C (122°F) is to be evaluated with respect to the temperature limits of the materials used

8.3 A switch shall be located and positioned so that it is not subject to mechanical damage during normal use or as a result of abuse. See 44.1.1

8.4 Other than as indicated in 8.7 and 8.8, a switch or other control device shall be acceptable for the application and shall have current and voltage ratings not less than those of the load that it controls

8.5 A primary circuit switch shall be connected to an ungrounded circuit conductor

8.6 A primary circuit switch shall have a current rating not less than twice the normal current draw under normal load conditions, or the switch shall be investigated for the application in accordance with the Overload and Endurance Tests on Switches and Controls, Section 35

8.7 A switch or other control device connected in the output circuit may be used if the device complies with the Normal Temperature Test and the Overload Test on Secondary Switches. See 31.1 and 36.1.

8.8 A switch or other controller not having an acceptable rating and located on a direct plug-in unit where it cannot be operated unless the unit is withdrawn from a receptacle may be used if it complies with the Operation Test, Section 37

## 9 Protective Devices

9.1 A protective device built into a unit shall comply with the requirements for that component

9.2 The protective device mentioned in 9.1 may be located in either the primary or secondary circuit



9.3 Crossed or nicked (reduced) cross-section conductors shall not be employed as a protective device.

9.4 Protective devices mentioned in 9.1 include, but are not limited to, eutectic material, fuses, overtemperature and overcurrent protectors, thermal protectors, and similar devices intended to interrupt or limit the flow of current as a result of overload.

9.5 A thermostat, thermal cutoff, Positive Temperature Coefficient (PTC) resistor, or Negative Temperature Coefficient (NTC) resistor incorporated in a unit shall not cause a risk of fire or electric shock due to improper application.

9.6 A manually reset thermostat shall be constructed so that automatic tripping of the thermostat is not prevented by any setting or position of the reset mechanism.

9.7 An automatically or manually reset protective device or a replaceable overcurrent-protective device shall not open when the unit is delivering its rated output. See the Normal Temperature Test, Section 31.

9.8 A primary circuit overcurrent protective device of the single-pole type, other than an automatic control without a marked off position, shall be connected to an ungrounded circuit conductor.

9.9 When a single fuse is located in the primary circuit, it shall be connected to an ungrounded circuit conductor.

*Exception: A unit not intended to be serviced is not required to comply with this requirement.*

*\*9.9 revised and separated into 9.9 and 9.9.1 August 2, 1996\**

9.9.1 When both circuit conductors of a product intended for connection to a nominal 120 volt branch circuit are fused, the fuse in the grounded circuit conductor shall be rated not less than the fuse in the ungrounded circuit conductor. See 49.2.8.

*Exception: A unit not intended to be serviced is not required to comply with this requirement.*

*\*9.9 revised and separated into 9.9 and 9.9.1 August 2, 1996\**

9.10 A unit investigated for compliance with the energy limitations of 28.3.1 shall be provided with protection complying with the Calibration of Overcurrent Protection Devices Test, Section 28.

9.11 A protective device that is provided to comply with 9.10 shall not be of the automatic reclosing type and shall not have automatic tripping prevented by any setting or position of the reset mechanism. When an accessible control of a manual reset protective device is held in the on or reset position, and the protective device is automatically tripped, the contact shall not automatically return to the closed position.

9.12 An overcurrent protective device shall be located inside the unit enclosure. The device shall be inaccessible to tampering.

*Exception: A unit may be provided with an externally replaceable overcurrent protective device if the device is relied upon for acceptable performance, the device shall not be interchangeable with a device having a higher current rating.*

9.13 A fuse provided in the secondary circuit of a not inherently limiting Class 2 power unit shall be rated in accordance with Table 28.2.

## 10 Components

10.1 A component - a fixed resistor, Positive Temperature Coefficient (PTC) or Negative Temperature Coefficient (NTC) resistor, diode, or the like - employed to limit (see 2.7) the output of a unit to within the required current or power levels, or otherwise used to obtain acceptable performance, shall have permanence and stability so as not to decrease its limiting capacities. Among the factors considered when evaluating a limiting component are

- a) Effect of operating temperature,
- b) Electrical stress level,
- c) Effect of transient surges, and
- d) Resistance to moisture

10.2 There shall be no components connected between primary and output circuits which result in a conducive connection (see 2.4). If capacitive coupling is provided between primary and output circuits, it shall consist of either

- a) A capacitor complying with the antenna coupling requirements specified in the Standard for Across-the-Line, Antenna-Coupling, and Line-by-Pass Capacitors for Radio- and Television-Type Appliances, UL 1414, or
- b) Two capacitors connected in series each capacitor complying with the requirements in 32.1.3

## 11 Coil Insulation

### 11.1 General

11.1.1 A coil shall be provided with insulation between the coil and any dead metal part, and between each adjacent pair of windings.

*Exception No. 1 Two or more secondary windings may be considered as a single winding and interposing insulation is not required, if, when interconnected, the windings comply with the performance requirements for a single winding.*

*Exception No. 2 Insulation need not be provided if the spacings required by 22.1 are provided.*

11.1.2 Coil insulation, unless inherently moisture resistant, shall be treated so as to render it moisture resistant.

11.1.3 Film-coated magnet wire is considered to be moisture resistant.

### 11.2 Insulation for transformers

11.2.1 The insulation between uninsulated, primary wires of opposite polarity shall be one of the following

- a) Electrical grade paper, waxed or otherwise treated to resist the absorption of moisture, having a total thickness of not less than 0.012 inch (0.305 mm); or
- b) Other insulating material having a dielectric breakdown strength of not less than 2500 volts in the thickness used as determined by the Tests on Transformer Insulating Materials, Section 39

11.2.2 Insulation between the primary and secondary windings shall be one of the following (for additional requirements, see 11.2.3 and 11.2.4)

- a) Electrical grade paper, waxed or otherwise treated to resist the absorption of moisture, having a total minimum thickness of 0.012 inch (0.305 mm)
- b) A molded polymeric material such as a coil form or bobbin having a minimum thickness of 0.025 inch (0.64 mm)
- c) Insulation - other than of a molded polymeric material - as specified in 11.2.1(b)

11.2.3 Tape used as insulation in lieu of spacings for a flanged bobbin wound transformer shall provide a continuous 1/32 inch (0.8 mm) minimum wide bent up edge against the bobbin flanges

11.2.4 A flanged, bobbin-wound transformer shall be subjected to the output loading test described in 38.2. The test shall be continued for 15 days if the transformer has

- a) The primary winding wound over the secondary winding or the secondary winding wound over the primary winding, and
- b) The primary winding insulated from the secondary winding by a layer of insulating material other than that specified in 11.2.2(b)

*Exception: The test described in 38.2.1 - 38.2.8 need not be applied for 15 days if the following requirements are met*

- a) *Multiple layered winding wire is used, which has been evaluated to the requirements for miscellaneous insulating devices and materials of UL 746A, Standard for Polymeric Materials - Short Term Property Evaluations, UL 746B, Standard for Polymeric Materials - Long Term Property Evaluations, and UL 746C, the Standard for Polymeric Materials - Use in Electrical Equipment Evaluations.*
- b) *The spacing requirements of Table 22.1 and Table 22.2 are met, or*
- c) *The requirement in the Standard for Insulation Coordination Including Clearances and Creepage Distances for Electrical Equipment, UL 840 are met, along with the use of additional securement of the winding, and a Comparative Tracking Index (CTI) rating of 100 for all insulating material is determined*

\*11.2.4 revised July 7, 1995\*

11.2.5 Insulation between the primary winding and the core shall be one of the following

- a) Electrical grade paper, waxed or otherwise treated to resist moisture, having a minimum total thickness of 0.012 inch (0.305 mm)
- b) A molded polymeric material such as a coil form or bobbin having a minimum thickness of 0.025 inch (0.64 mm)
- c) Insulation - other than of a molded polymeric material - as specified in 11.2.1(b)

11 2 6 Insulation between the primary winding lead connections and a metallic enclosure shall be one of the following

- a) Electrical grade paper, waxed or otherwise treated to resist the absorption of moisture, not less than 0.012 inch (0.305 mm) thick if used in conjunction with an air spacing of one-half that specified in 22.1
- b) Electrical grade paper, waxed or otherwise treated to resist the absorption of moisture having a total thickness of not less than 0.028 inch (0.71 mm) when the insulation is in contact with the enclosure
- c) Insulation having a dielectric breakdown strength of not less than 2500 volts in the thickness used for (a) and 5000 volts in the thickness used for (b) as determined by Tests on Transformer Insulating Materials, Section 39

11 2 7 Insulation in accordance with 11 2 6 shall be provided between a crossover lead and

- a) The turns of the winding to which it is connected,
- b) The adjacent winding,
- c) The metallic enclosure, and
- d) The core

11 2 8 To comply with 11 2 7, insulation shall be one of the following

- a) Electrical grade paper, waxed or otherwise treated to resist the absorption of moisture, having a total thickness of not less than 0.012 inch (0.305 mm)
- b) Insulation as specified in 11 2 1(b)

*Exception No. 1 Any type or thickness of insulation, or a through air spacing less than specified in 22.1, between a crossover lead and the winding to which it is connected may be used if either*

- a) *The coil withstands the dielectric voltage withstand test described in 32.1.1 and 32.1.2 with the potential applied between the coil leads and with the coil lead cut at the point where it enters the inner layer; or*
- b) *The coil withstands the induced potential test described in 32.2.1 - 32.2.3. See 11 2 9*

*Exception No. 2 This requirement does not apply to insulation between a Class 2 secondary crossover lead and*

- a) *The secondary winding to which the crossover lead is connected,*
- b) *The metallic enclosure; and*
- c) *The core*

11.2.9 With reference to Exception No. 1 to 11.2.8, the magnet coil of a molded bobbin transformer having a slot for the crossover or start lead - unspliced at the windings - is acceptable as crossover lead insulation if

- a) The slots provide a graduated through air spacing to the winding, increasing to the end turns, and
- b) The magnet-coil winding withstands the induced potential test described in 32.2.1 - 32.2.3 or the dielectric voltage withstand test described in 32.1.1 and 32.1.2.

11.2.10 Insulation between the primary-lead connections and the adjacent winding, and between secondary-lead connections and the primary winding shall be one of the following

- a) Electrical grade paper, waxed or otherwise treated to resist the absorption of moisture, having a total thickness of not less than 0.028 inch (0.71 mm), or
- b) Other insulating material having a dielectric breakdown strength of not less than 5000 volts in the thickness used as determined by Tests on Transformer Insulating Materials, Section 39.

No Text on This Page

**12 Input Connections**

**12.1 Direct plug-in units**

12.1.1 The integral blade assembly of direct plug-in units shall comply with the construction requirements in the Standard for Attachment Plugs and Receptacles, UL 498. See 5.17 and 5.18.

12.1.2 If a direct plug-in unit employs a manually operated line connected single-pole switch or a fuse with an accessible contact, it shall employ a polarized- or grounding-type blade assembly.

12.1.2 effective September 1, 1997

12.1.3 If a direct plug-in unit employs folding or retractable blades for the input connectors, it shall comply with the requirements specified in Section 42, Direct Plug-in Security of Input Contacts Test.

\*12.1.3 added July 7, 1995\*

**12.2 Cord-connected units**

12.2.1 A portable or stationary unit shall be provided with a flexible cord in accordance with Table 12.1 and an attachment plug for connection to the branch circuit. The blade assembly for connection to the branch circuit shall be of the polarized- or grounding-type. The length of cord external to the unit and including the attachment plug shall not be less than 6 feet (1.8 m) as measured from the face of the attachment plug to the point of attachment or entry.

*Exception No. 1* A unit weighing 1 pound (454 g) or less is acceptable if the total length of the input and output cords is 6 feet or more, and the length of the input cord is at least 3 feet (0.91 m).

*Exception No. 2* A stationary power unit intended to be fastened in place may require a form of supply connection that will facilitate the interchange of equipment to maintain continuous service or otherwise meet special conditions of use. For such service, a Type S, SE, or equivalent flexible cord may be employed and may be of a length appropriate for the purpose, but no longer than 10 feet (3 m). Normally, a 2 foot (610 mm) length of cord will be sufficient for the plug and the receptacle connection.

*Exception No. 3* A power unit marked in accordance with 49.1.7 and provided with instructions in accordance with 50.3 need not be provided with the detachable power supply cord.

*Exception No. 4* If a power unit is intended for use in a country other than the U.S.A., the detachable power supply cord shall comply with the requirements of the country of destination.

12.2.1 effective September 1, 1997

**Table 12.1**  
**Acceptable flexible cords for cord connected power units**

Flexible cord type	Maximum length, feet (m)
SP-2, SPE-2, SPT-2, SV, SVE, SVT	10 (3)
S, SE, SO, SP-3, SPT-3, ST, STO, SJ, SJE, SJO, SJT, SJTO	Not specified

12.2.2 If a unit with a permanently attached power supply cord can be adapted for use on two or more different voltages by field alteration of internal connections, the attachment plug provided with the unit shall be of a type required for the voltage and current for which the unit is connected when shipped from the factory.

12.2.2 revised May 25, 1995

12.2.3 If a multiple voltage rated power unit is intended for use with a detachable power supply cord, the cord shall be provided with the unit if either of the following apply

- a) The power unit is provided with an operator adjustable voltage selector and complies with 38.5.1, or
- b) The power unit is capable of operating at different voltages without user adjustment

The power unit shall be provided with instructions in accordance with 50.1 and 50.2

*Exception* A power unit marked in accordance with 49.1.7 and provided with instructions in accordance with 50.3 need not be provided with the detachable power supply cord

12.2.3 added May 25, 1995

12.2.4 If a multiple voltage rated power unit is provided with a permanently attached power supply cord, and it is intended for use by travelers, the power unit shall comply with (a) — (e)

- a) The power supply cord shall terminate in a 125 volt 15 amp plug configuration;
- b) The power unit shall employ a user adjustable voltage selector and comply with 38.5.1, or be capable of operating at different voltages without user adjustment,
- c) The input voltage rating shall include nominal 120 volt,
- d) The power unit shall be marked as indicated in 49.1.8, and
- e) The power unit shall be provided with instructions per 50.4

12.2.4 added May 25, 1995

### 12.3 DC Input units

12.3.1 Units with a dc input shall be provided with a vehicle battery adapter in compliance with UL 2089, Standard for Vehicle Battery Adapters

*Exception* A vehicle battery adapter is not required to be provided with the unit, when the unit is marked for use with a required vehicle battery adapter complying with UL 2089, Standard for Vehicle Battery Adapters

\*12.3.1 added August 2, 1996\*

12.3.2 A fuse provided with a dc input jack shall not be relied upon to provide the overcurrent protection specified in the Output Current and Power Test, Section 28

\*12.3.2 added August 2, 1996\*

## 13 Output Connections

### 13.1 General

13.1.1 A unit shall be provided with an output cord, terminals, insulated leads, or output connectors



### 13.2 Output wiring

13.2.1 The output wiring shall be stranded conductors having insulation not less than 0.013 inch (0.33 mm) thick, and permanently attached to the output circuit. The wiring shall extend at least 6 feet (1.8 m) outside the unit, and shall comply with the requirements in 16.1 and 16.2.

*Exception No. 1* Wiring less than 6 feet long may be used if longer wiring may introduce a risk of fire, electric shock, or injury to persons.

*Exception No. 2* A product covered by *Exception No. 1* to 13.2.1 need not extend the output wiring 6 feet (1.8 m) outside the unit.

13.2.1 revised July 7, 1995

13.2.1.1 For a cord-connected power unit with a minimum 6-foot (1.8-m) power-supply cord, the output flexible cord required by 13.1.1, whether permanently attached to the power unit or provided in the form of a separate cord set, shall be of any desirable length. The maximum combined length of the input and output cords shall not exceed 20 feet (6.1 m).

\*13.2.1.1 added August 2, 1996\*

13.2.2 With respect to 13.2.1, for units with jacketed multiconductor output wiring, the individual conductor insulation may be less than 0.013 inch (0.33 mm) provided that the following conditions are met:

- a) The thickness of the individual conductor insulation plus the thickness of the jacket is not less than 0.013 inch, and
- b) The unit complies with the requirements in 26.1 and 28.2.1 with any combination of output conductors interconnected.

13.2.3 A fitting having female contacts shall be constructed so that it will not receive the blades of a standard attachment plug. A fitting having male contacts shall be constructed so that the contacts will not touch a live part of a standard attachment-plug receptacle.

### 13.3 Output terminals

13.3.1 A terminal plate tapped for a wire-binding screw or stud shall be of brass or other nonferrous metal, or plated steel, not less than 0.030 inch (0.76 mm) thick, and shall provide not less than two full threads in the metal for the binding screw.

*Exception No. 1* Two full threads are not required if a lesser number of threads results in a secure connection in which the threads will not strip when subjected to the test specified in 43.1.

*Exception No. 2* A plate may be less than 0.030 inch thick if the tapped threads have acceptable mechanical strength. See 43.1.

*Exception No. 3* A terminal plate that complies with the *Exception* to 43.1 need not comply with this requirement.

13.3.2 A wire-binding screw or terminal stud shall not be smaller than No. 6 (3.5 mm diameter) and shall not have more than 32 threads per inch (25.4 mm). The screw or stud shall be of brass or other nonferrous metal, or plated iron or steel.

13.3.3 Terminal studs shall be prevented from turning by means other than friction between mounting surfaces. The acceptability of a lock washer or similar means to prevent turning shall be determined by the test described in 43.1 and 43.2.

No Text on This Page

13.3.4 A multi-output unit employing output terminals the output of which exceeds the current limit specified in 28.2 with outputs interconnected shall be marked in accordance with 49.2.12.

#### 13.4 Output connectors

13.4.1 A unit with multiple outputs where interconnection exceeds Class 2 levels as defined in this standard shall be provided with a polarized connector.

13.4.2 Output connectors mounted on the enclosure and intended for direct connection of accessories, such as separable battery holders and the like, shall provide a secure connection between mating parts. The connections shall be polarized if the output is direct-current or if multiple outputs are provided.

#### 13.5 Bushings

13.5.1 At a point where a flexible cord passes or is intended to pass through an opening in a metal wall, barrier, or enclosing case, there shall be a bushing or the equivalent that shall

- a) Be substantial,
- b) Be secured in place, and
- c) Have a smooth, rounded surface against which the cord may bear.

13.5.2 If the cord hole is in a nonconducting material, a smooth, rounded surface is considered to be the equivalent of a bushing.

#### 14 Accessibility of Live Parts

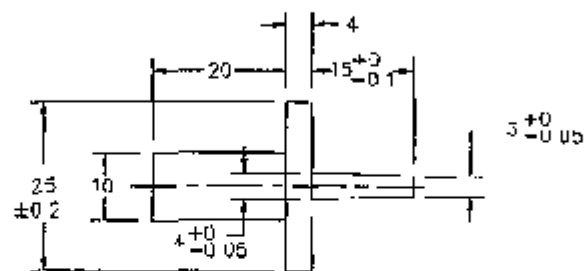
##### 14.1 General

14.1.1 A live part that poses a risk of electric shock shall be located or enclosed so that the risk of contact is reduced.

14.1.2 The input impedance of the voltmeter used to measure voltage in accordance with the requirements of 14.2.1 and 14.3.1 is to be a minimum of one megohm. The input impedance of a meter with more than one megohm input impedance can be lowered by using shunt impedance.

14.1.3 A guard, baffle, or cover that can be removed without using a tool is to be removed when determining if a live part is accessible to the user. A live part that can be contacted by the test pin, articulate probe, or accessibility probe illustrated in Figure 14.1, Figure 14.2, or Figure 14.4 is considered to be accessible.

Figure 14.1  
Test pin



S2962

Dimensions in millimeters

\*Figure 14.1 revised September 25, 1999\*

#### 14.2 Live parts other than exposed wiring terminals

14.2.1 The test pin and articulate probe illustrated in Figures 14.1 and 14.2, respectively, when applied as indicated in 14.2.2, shall not contact

- a) A primary circuit; or
- b) Any live part with a voltage greater than that specified in 14.2.2 with respect to ground or any other live part simultaneously accessible to the test pin or articulate probe

14.2.2 The maximum voltages which may be accessible in accordance with 14.2.1(a) are

- a) 42.4 V peak for sinusoidal or nonsinusoidal AC,
- b) 60 V for continuous DC,
- c) 24.8 V peak for DC interrupted at a rate of 200 Hz or less with approximately 50 percent duty cycle, and
- d) As indicated in Figure 14.3 for combinations of AC and DC

For the purpose of this requirement, initial transients lasting less than 200 milliseconds may be ignored. Since short term peak voltage is of interest during tests involving a fault, voltages are to be monitored by using a storage oscilloscope for the first two seconds after any fault is introduced.

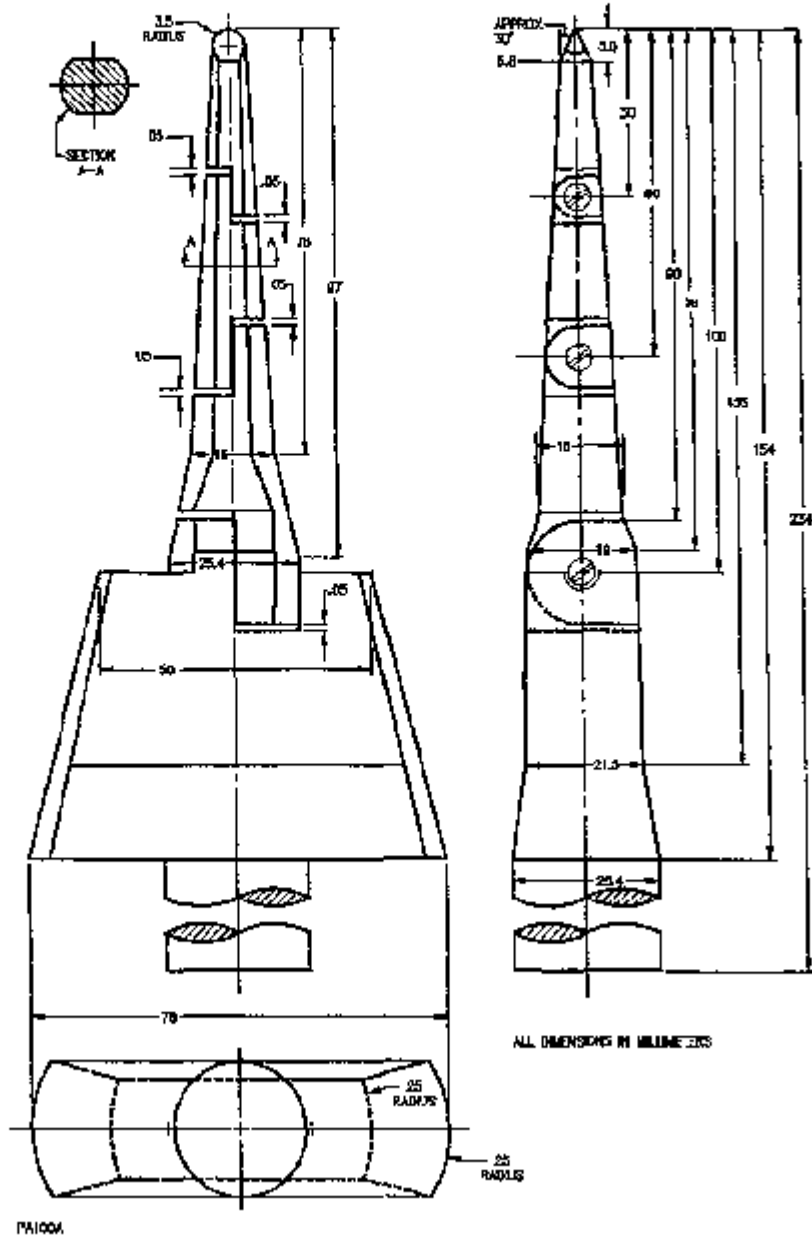
*Exception* The voltage may be exceeded if the current between the parts does not exceed 0.5 mA when measured in accordance with Leakage Current Test, Section 24.

14.2.2 revised July 7, 1995

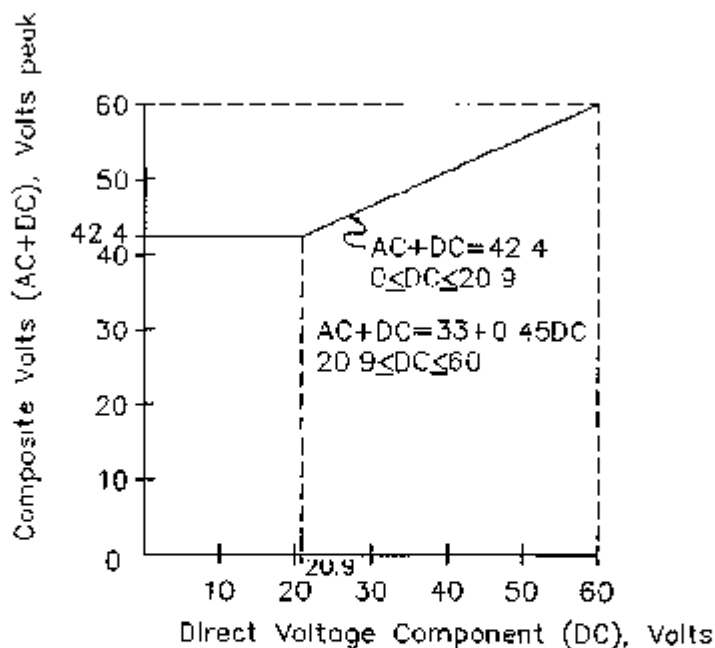
14.2.3 The test pin and articulate probe referenced in 14.2.1 are to be applied with a force not exceeding 1 pound (4.4 N) to determine whether the live parts are accessible. The test pin shall not be applied to fuseholders and the like.

No Text on This Page

Figure 14.2  
Articulate probe with web stop



**Figure 14.3**  
**Maximum acceptable voltage**



SM363

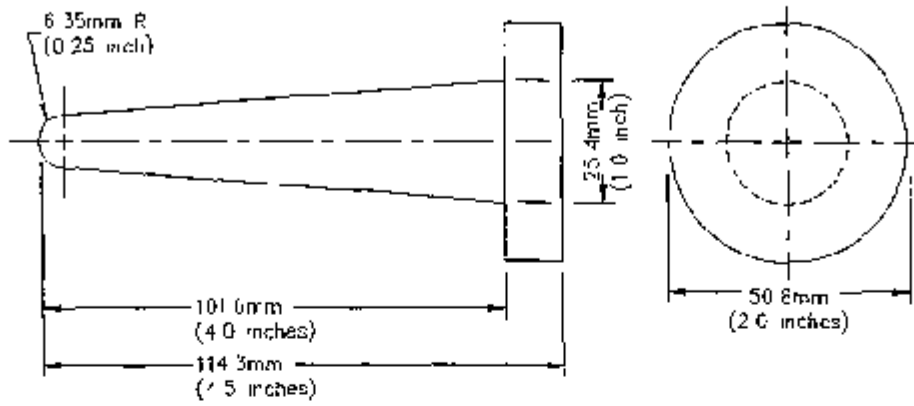
\*Figure 14.3 revised September 25, 1998\*

**14.3 Exposed wiring terminals**

14.3.1 The accessibility probe illustrated in Figure 14.4, when applied as indicated in 14.3.3, shall not contact an exposed wiring terminal with a voltage greater than that specified in 14.3.2 with respect to ground or to any other terminal simultaneously accessible to the probe



Figure 14.4  
Accessibility probe



53252

No Text on This Page

14.3.2 The maximum voltages which may be accessible in accordance with 14.3.1 are

- a) 42.4 V peak for sinusoidal or nonsinusoidal AC,
- b) 42.4 V for continuous DC,
- c) 24.8 V peak for DC interrupted at a rate of 200 Hz or less with approximately 50 percent duty cycle, and
- d) 42.4 V peak for combinations of AC and DC

14.3.3 The accessibility probe referenced in 14.3.1 is to be applied with a force not exceeding 5.62 pounds (25 N) to determine whether the exposed wiring terminals are accessible. Prior to applying the probe, wire binding screws are to secure the largest wire in accordance with Table 43.1

#### 15 Live Parts

15.1 A current-carrying part shall be silver, copper, a copper alloy, plated iron or steel, stainless steel, or other corrosion-resistant alloys acceptable for the application.

15.2 An uninsulated live part shall be secured to the base or mounting surface so that it will not turn or shift in position if such motion may result in a reduction of spacings below the minimum acceptable values.

15.3 Friction between surfaces is not acceptable as a means to prevent shifting or turning of a live part but a lock washer is acceptable.

#### 16 Strain Relief

16.1 Strain relief shall be provided for the supply cord and output wiring, and shall be tested in accordance with the Strain Relief Test, Section 40.

16.2 Means shall be provided to prevent the cord or wiring from being pushed into the enclosure through the cord-entry hole when such displacement results in

- a) Subjecting the supply cord or lead to mechanical damage,
- b) Exposing the supply cord or lead to a temperature higher than that for which it is rated,
- c) Reducing spacings (such as to a metal strain-relief clamp) below the minimum required values, or
- d) Damaging internal connections or components

To determine compliance, the supply cord or lead shall be tested in accordance with Section 40A, Push-Back Relief Test.

\*16.2 revised September 25, 1998\*

#### 17 Internal Wiring

17.1 The internal wiring of a unit shall consist of insulated conductors having mechanical strength, dielectric properties, and ampacity for the application. See 17.6.

17.2 Each splice and connection shall be mechanically secure, shall provide reliable electrical contact, and shall be provided with insulation at least equivalent to that of the wire involved unless acceptable permanent spacing between the splice and all other metal parts will be maintained. When determining the required minimum thickness of splice insulation, the circuit voltage and interaction with other circuits shall be taken into consideration.

17.3 A wire connector for making a splice in a unit shall be a type that is applied by a tool in which the application force of the tool making the splice is independent of the force applied by the operator of the tool.

17.4 The connection between a lead, including a flexible cord, and the transformer winding or other part of the unit shall be soldered, welded, or otherwise securely connected within the enclosure. A soldered joint shall be mechanically secure before soldering.

17.5 If a lead is rigidly held in place without the use of solder, or if it is retained in place so as not to be subjected to any motion, no additional mechanical security is required. Mechanical securement of a lead is not required if separation of the connection does not result in a risk of fire or electric shock.

17.6 Unless it is to be evaluated as an uninsulated live part, insulated internal wiring - including an equipment-grounding conductor - shall consist of wire of a type or types acceptable for the application, when considered with respect to:

- a) The temperature and voltage to which the wiring is likely to be subjected,
- b) Exposure to oil, grease, cleaning fluid, or other substances likely to have a deleterious effect on the insulation, and
- c) Other conditions of service to which it is likely to be subjected.

17.7 An insulated conductor shall be located or protected to reduce the risk of contact with any sharp edge, burr, fin, moving part, or the like, that can damage the conductor insulation.

#### 18 Separation of Circuits

18.1 Unless provided with insulation rated for the highest voltage involved, insulated conductors of different circuits - internal wiring - shall be separated by barriers or shall be segregated and shall, in any case, be separated or segregated from uninsulated live parts connected to different circuits.

18.2 Segregation of insulated conductors may be accomplished by clamping, routing, or equivalent means that provides permanent separation from an insulated or uninsulated live part of a different circuit.

18.3 A barrier used to separate or segregate internal wiring shall have mechanical strength and be held in place so as to provide permanent separation, and it shall be acceptable for the temperatures involved.

18.4 A barrier intended to separate or segregate low-voltage field wiring from line-voltage parts shall be of material of sufficient thickness to serve its intended purpose. It shall be supported so that its deformation cannot be readily accomplished to defeat its purpose.

#### 19 Insulating Materials

19.1 Integral parts such as insulating washers and bushings, and bases or supports for mounting of live parts, shall be of moisture-resistant materials that will not be damaged by the temperatures and stresses to which they will be subjected under conditions of actual use.

19.2 An insulating material is to be evaluated for the application in accordance with the Standard for Polymeric Materials - Use in Electrical Equipment Evaluations, UL 746C. Consideration is to be given to such factors as its mechanical strength, resistance to ignition sources, dielectric strength, insulation resistance, and heat-resistant properties in both the aged and unaged conditions, the degree to which it is enclosed, and any other features affecting the risk of fire and electric shock.

*Exception: Materials, such as mica, ceramic, or some molded compounds are usually acceptable for use as the sole support of live parts.*

## 20 Printed Wiring Boards

20.1 A printed wiring board in a unit shall comply with the Standard for Printed Wiring Boards, UL 795, and shall be classed V-1 or less flammable, in accordance with the Standard for Tests for Flammability of Plastic Materials for Parts in Devices and Appliances, UL 94.

*Exception No. 1* This requirement does not apply to a printed wiring board that contains only Class 2 circuits where denaturation or breakage of the bond between the conductor and the base material does not result in a risk of fire or electric shock.

*Exception No. 2* For a direct plug-in unit, a V-2 material may be used if the enclosure has no openings.

*Exception No. 3* For a cord-connected unit, a V-2 material may be used if the unit is closed beneath the material or has an equivalent barrier.

\*20.1 revised September 25, 1998\*

20.2 A resistor, capacitor, inductor, or other part that is mounted on a printed circuit board to form a printed circuit assembly shall be secured so that it cannot be displaced to cause a risk of fire or electric shock by a force likely to be exerted on it during assembly or normal operation as determined during the Abuse Tests, Section 44.

20.3 A printed wiring board as indicated in Exception No. 1 to 20.1 shall also

- a) Comply with the Standard for Printed Wiring Boards, UL 796, and
- b) Have a minimum flammability classification of V-0 in accordance with the Standard for Tests for Flammability of Plastic Materials for Parts in Devices and Appliances, UL 94.

\*20.3 revised September 25, 1998\*

## 21 Grounding

### 21.1 General

21.1.1 Provision shall be made for grounding of all dead metal parts that are exposed or that are likely to be touched by a person during intended operation or adjustment of the unit, and that are likely to become energized through electric fault.

*Exception* A metal part, such as an adhesive-attached metal foil marking, a screw, or a rivet separated from wiring and spaced from uninsulated live parts as if it were a grounded part need not be connected to the grounding member.

21.1.2 For a direct plug-in unit intended for semipermanent installation, a metal mounting tab may serve as the grounding member.

21.1.3 A grounding means, if employed, shall be conductively connected to accessible metal parts. For units not having accessible dead metal parts, the grounding means shall be connected to

- a) The core of the transformer or other internal dead metal part,
- b) The transformer secondary output, or
- c) A grounding wire in the output cord which terminates at the output connector.

21.1.4 With reference to 21.1.3(c), for units having the grounding means connected to a bonding wire in the output cord, the bonding wire shall comply with 21.2.6.

21.1.5 To determine whether a part is likely to become energized, such factors as construction, the proximity of wiring, a dielectric voltage withstand test after the overload and endurance tests, a burnout test, and similar considerations are to be evaluated.

21.1.6 Bonding shall comply with 21.2.1 - 21.2.6 whether the grounding connection is required or not.

## 21.2 Bonding conductor

21.2.1 Bonding shall be accomplished by a metal-to-metal contact of parts or by a separate bonding conductor as specified in 21.2.6.

21.2.2 A bonding conductor shall be copper, copper alloy, or another acceptable material.

21.2.3 Ferrous metal in the grounding path shall be protected against corrosion by enameling, galvanizing, plating, or other equivalent means.

*Exception* Corrosion protection need not be provided at electrical connections.

21.2.4 A separate bonding conductor

- a) Shall be protected from mechanical damage or located within the outer enclosure, and
- b) Shall not be secured by a removable fastener used for a purpose in addition to bonding, unless the bonding conductor is not likely to be omitted if the fastener is removed and replaced as intended.

A bonding conductor shall be in metal-to-metal contact with the parts to be bonded.

21.2.5 A splice shall not be employed in a bonding conductor.

21.2.6 A separate component-bonding conductor shall:

- a) Not be smaller than any internal conductor supplying the part to be bonded, or
- b) Comply with the Bonding Conductor Test, Section 45.

## 22 Spacings

22.1 Spacings between live parts of opposite polarity, between live and dead metal parts, and between live parts and a metal enclosure, shall be as specified in Table 22.1 or Table 22.2, as appropriate. If a live part is not rigidly secured in position by a means other than friction between surfaces, or if a movable dead metal part is in proximity to an uninsulated live part, the construction shall be such that at least the minimum spacings will be maintained.

*Exception No. 1* Spacings between traces on a printed wiring board need not comply with Tables 22.1 and 22.2 if the printed wiring board complies with the abnormal operation test in 38.7.1 - 38.7.5. See also 20.3. The requirements specified in 20.3 and 38.7.1 - 38.7.5 do not substitute for the minimum required spacings between the printed wiring board foils and dead metal parts or the spacings between the primary and secondary foils of the printed wiring board as specified in Table 22.1 or 22.2.

*Exception No. 2 A unit complying with the requirements in 22.4 - 22.8 need not comply with this requirement.*

22.1.1 For the purpose of determining working voltage in units employing nonlinear circuitry

- a) when the dc value is used, the peak value of any superimposed ripple shall be included,
- b) non-repetitive transients (due, for example, to atmospheric disturbances) shall be disregarded,
- c) the voltage of a Class 2 circuit is regarded as zero for determination of through air spacings. However, the voltage of a Class 2 circuit shall be taken into account for determination of over surface spacings,
- d) ungrounded accessible conductive parts shall be assumed to be grounded,
- e) where a transformer winding or other part is floating (not connected to a circuit which establishes its potential relative to earth) it shall be assumed to be grounded at the point by which the highest working voltage is obtained,
- f) for insulation between two transformer windings, the highest voltage between any two points in the two windings shall be used, taking into account external voltages to which the windings are able to be connected,
- g) for insulation between a transformer winding and another part, the highest voltage between any point on the winding and the other part shall be used, and
- h) nominal values of mains supply voltage shall be used

\*22.1.1 added August 2, 1996\*

**Table 22.1**  
**Spacing in units having openings**

Potential involved, volts rms (peak)	Minimum spacings, inch (mm)		
	Through air	Over surface	Shortest distance to metal enclosure
50 or less (70.7)	1/16 (1.6)	1/16 (1.6)	1/16 (1.6)
51 - 150 (70.8 - 212.1)	1/8 (3.2)	1/4 (6.4)	1/4 (6.4)
151 - 250 (212.2 - 353.5)	1/4 (6.4)	3/8 (9.5)	1/2 (12.7)
251 - 600 (353.6 - 848.5)	3/8 (9.5)	1/2 (12.7)	1/2 (12.7)

\*Table 22.1 revised August 2, 1996\*

**Table 22.2**  
**Spacing in units without openings**

Potential involved, volts rms (peak)	Minimum spacings, inch (mm)	
	Through air and over surface	Shortest distance to metal enclosure
50 or less (70.7)	1/16 (1.6)	1/16 (1.6)
51 - 150 (70.8 - 212.1)	1/16 (1.6)	1/4 (6.4)
151 - 250 (212.2 - 353.5)	3/16 (4.8)	1/4 (6.4)
251 - 600 (353.6 - 848.5)	1/4 (6.4)	1/2 (12.7)

\*Table 22.2 revised August 2, 1996\*

22.2 All uninsulated live parts connected to different circuits, including all secondary circuits, shall be spaced from one another as though they were parts of opposite polarity and shall be evaluated on the basis of the highest voltage involved.

22.3 At other than field-wiring terminals, spacings in a Class 2 secondary circuit from the transformer secondary winding on or beyond the energy-limiting component, as may be appropriate, are not specified between live parts of opposite polarity and between a live part and a dead metal part.

22.4 As an alternative to the spacing requirements of Table 22.1 or Table 22.2, as appropriate, the spacing requirements in the Standard for Insulation Coordination Including Clearances and Creepage Distances For Electrical Equipment, UL 840, may be used. The spacing requirements of UL 840 shall not be used for output wiring terminals and spacings to a dead metal enclosure.

22.5 It is anticipated that the level of pollution expected will be pollution degree 2. Hermetically sealed or encapsulated enclosures, or coated printed wiring boards in compliance with the Printed Wiring Board Coating Performance Test of The Standard for Insulation Coordination Including Clearances and Creepage Distances For Electrical Equipment, UL 840, are considered pollution degree 1.

22.6 It is anticipated the equipment will be rated overvoltage category II and overvoltage category I as defined in the Standard for Insulation Coordination Including Clearances and Creepage Distances for Electrical Equipment, UL 840.

22.7 In order to apply Clearance B (controlled overvoltage) clearances, control of overvoltage shall be achieved by providing an overvoltage device or system as an integral part of the product.

22.8 All printed wiring boards are considered to have a minimum comparative tracking index (CTI) of 100 without further investigation.

22.9 An insulating barrier or liner used to provide spacings shall be of material acceptable for the application and shall not be less than 0.028 inch (0.71 mm) thick.

*Exception No. 1. A barrier or liner used in conjunction with not less than half the required spacing through air may be less than 0.028 inch (0.71 mm) thick, but not less than 0.012 inch (0.305 mm) thick if the barrier or liner is of acceptable insulating material that is:*

- a) Resistant to moisture,*
- b) Of acceptable mechanical strength if exposed or otherwise likely to be subjected to mechanical damage,*
- c) Reliably held in place, and*
- d) Located so that it is not adversely affected by operation of the device - particularly arcing*

*Exception No. 2. A barrier or liner may be less than 0.028 inch thick but not less than 0.010 inch (0.25 mm) thick in the secondary circuit where the potential is not more than 50 volts if it is:*

- a) Resistant to moisture,*
- b) Of acceptable mechanical strength - if exposed or otherwise likely to be subjected to mechanical damage, and*
- c) Reliably held in place*



22.10 Insulating material having a thickness less than that specified in 22.9 may be used if, upon investigation, it is found to be acceptable for the application, and has a dielectric breakdown strength of not less than 5000 volts in the thickness used for 22.9, or 2500 volts in the thickness used for Exception No. 1 to 22.9, as determined by the Tests on Transformer Insulating Materials, Section 39.

## PERFORMANCE

### 23 General

23.1 The number of representative samples indicated in Table 23.1 shall be subjected to the tests described in Sections 24 - 45. Unless otherwise specified, all tests are to be conducted at the applicable voltage specified in Table 23.2. A power unit marked with an operating voltage range shall comply with the requirements while connected to a source of voltage adjusted to that value within the specified range which results in the most severe operating condition.

23.2 With respect to 23.1 and footnotes a, b, and c of Table 23.1, a sample may be used for more than one test, providing the previous test did not damage the sample.

23.3 For tests in which the unit is to be connected to a supply circuit, the branch circuit shall be protected by a branch-circuit protective device having a rating equal to the smallest rated receptacle to which the unit may be connected.

No Text on This Page

Table 23.1  
Tests

Section	Test	Number of samples to be subjected to test
24	Leakage Current	1
25	Leakage Current and Dielectric Voltage Withstand after Humidity Exposure	1
26	Maximum Output Voltage	1
27	Maximum Input	1
28	Output Current and Power	1
29	Calibration of Overcurrent Protection Devices Test	1
30	Full-Load Output Current	1
31	Normal Temperature	1
32	Dielectric Voltage Withstand	1
33	Endurance	1
34	Repeat Dielectric Voltage Withstand	1
35	Overload on Primary Switches	1
36	Overload on Secondary Switches	1
37	Operation	1
38	Abnormal Output Loading	1 <sup>a</sup>
	Transformer Burnout	1 <sup>b</sup>
	Reverse Polarity	1
	Switch Position	1
	Component Malfunction or Breakdown	1 <sup>c</sup>
39	Tests on Transformer Insulating Materials	d
40	Strain Relief	1
41	Direct Plug-In Unit Blade Secureness	1
42	Direct Plug-In Unit Input Contact Security	1
43	Output Connector Security	1
44	Abuse Impact on Direct Plug-In Units	3
	Impact on Cord Connected Units	3
	Red Pressure on Direct Plug-In Units	1
	Resistance to Crushing on Direct Plug-In Units	1
45	Banding Conductor	1
-	Tests for Thermoplastic Enclosures	e
	Mold Stress Relief Distortion	1 <sup>e</sup>
	Strain Relief Test after Mold Stress Relief Distortion	1 <sup>e</sup>

<sup>a</sup> One sample is required for each loading condition noted in 38.2.1 - 38.2.10

<sup>b</sup> Additional samples may be required if multiple secondary windings are present. One sample is required for each secondary winding.

<sup>c</sup> Additional samples may be required if multiple components are present. One sample is required for each component to be faulted.

<sup>d</sup> A sample representative of the insulating system material or materials is to be tested.

<sup>e</sup> Based on UL 746C, the Standard for Polymeric Materials - Use in Electrical Equipment Evaluations.

Table 23.2  
Values of test voltage

Rated Voltage	Test Voltage
110 - 120	120
121 - 219	Rated voltage
220 - 240	240
241 - 250	Rated voltage

23.4 The frequency of the supply circuit is to be the rated frequency of the unit. If the unit is rated for a range of frequencies, the Maximum Input Test, Section 27, Full Load Output Current Test, Section 30, Normal Temperature Test, Section 31, and Endurance Test on Overcurrent- and Overtemperature-Protective Devices, Section 33, shall be conducted at the lowest rated frequency, and all other tests are to be conducted at the highest rated frequency.

23.5 For all tests in which a direct plug-in unit is to be energized from a source of supply, the unit is to be operated from an outlet representing the following constructions:

- a) Duplex receptacle outlet with nonmetallic faceplate,
- b) Receptacle mounted on a nonmetallic outlet box, not more than 12 cubic inches (196.6 cm<sup>3</sup>) in volume, and
- c) Outlet box mounted in a vertical wall section approximately 3-1/2 inches (88.9 mm) thick with plywood or gypsum wallboard surfaces and loosely filled with fiberglass or equivalent thermal insulation.

23.6 The cheesecloth mentioned in this standard is to be bleached cheesecloth running 14 - 15 square yards per pound mass (approximately 26 - 28 square meters per kilogram mass) and having what is known in the trade as a "count of 32 by 28," that is, for any square inch, 32 threads in one direction and 28 threads in the other direction (for any square centimeter, 13 threads in one direction and 11 in the other direction).

23.7 The tests described in Sections 27 - 31, 33, and 35 - 39 are to be conducted in an ambient air temperature within the range of 21 - 30°C (70 - 86°F).

*Exception: The Normal Temperature Test, Section 31, with or without standard fuses, but without other forms of overcurrent or overtemperature protectors, may be conducted in an ambient air temperature within the range of 10 - 40°C (50 - 104°F).*

23.8 For tests which specify rated load conditions, a sample is to be connected to the load specified in Table 23.3.

23.9 With reference to Table 23.3, if an output is rated in watts or volt-amperes, the rated output current is considered to be the quotient of the watt or volt-ampere rating and the voltage rating.

23.10 If a battery charger is to be tested using a lead-acid battery or batteries as the load, each battery is to be discharged to 1.75 volts per cell - measured with the load connected - at a rate not to exceed the discharge rate assigned by the battery manufacturer, but in any case, the rate of the discharge is not to exceed one-sixth of the ampere-hour capacity of the battery.

**Table 23.3**  
**Unit output loading**

Type of output current	Load for test
Alternating	Variable resistor adjusted to result in rated output current
Rectified	Variable resistor in parallel with a 10,000 microfarad capacitor adjusted to result in rated output current, or, for the temperature test, a load as noted in 23.10, 23.11, or 23.12 if a battery charger is intended for use with specific batteries

23.11 If a battery charger is to be tested with a typical 1.2 Volt per cell nickel cadmium battery or batteries as the load, each battery is to be discharged to 0.9 volts per cell - measured with the load connected - at a rate not to exceed the discharge rate assigned by the battery manufacturer.

23.12 If a battery charger is to be tested with a battery or batteries other than those specified in 23.10 and 23.11, the battery is to be discharged at a rate not exceeding the battery manufacturer's maximum recommended discharge rate to an appropriate discharge voltage.

#### 24 Leakage Current Test

24.1 The leakage current of a unit, tested in accordance with 24.3 - 24.7, shall not be more than

- a) 0.5 milliamperes for a portable unit, or
- b) 0.75 milliamperes for a stationary unit.

24.2 Leakage current refers to all currents, including capacitively coupled currents, that may be conveyed between exposed surfaces and ground or other exposed surfaces of a unit.

24.3 All exposed surfaces, including output terminals, are to be tested for leakage currents. The leakage currents from these surfaces are to be measured to the grounded supply conductor individually as well as collectively where simultaneously accessible, and from one surface to another where simultaneously accessible, except not from one output terminal to another. Parts are considered to be exposed surfaces unless guarded by an enclosure that complies with the requirements for Enclosures, Section 6.

24.4 If a surface other than metal is used for the enclosure or part of the enclosure, the leakage current is to be measured using a metal foil with an area of 10 by 20 centimeters (3.94 by 7.88 inches) in contact with the surface. Where the surface is less than 10 by 20 centimeters, the metal foil is to be the same size as the surface. The metal foil is not to remain in place long enough to affect the temperature of the unit.

24.5 The measurement circuit for leakage current is to be as illustrated in Figure 24.1. The meter actually used for a measurement need only indicate the same numerical value for a particular measurement as would the defined instrument. The meter used need not have all the attributes of the defined instrument. The measurement instrument is to be as follows:

- a) The meter is to have an input impedance of 1500 ohms resistive shunted by a capacitance of 0.15 microfarad.
- b) The meter is to indicate 1.11 times the average of the full-wave rectified composite waveform of voltage across the resistor or current through the resistor.
- c) Over a frequency range of 0 - 100 kilohertz, the measurement circuitry is to have a frequency response - ratio of indicated to actual value of current - equal to the ratio of the impedance of a 1500-ohm resistor shunted by a 0.15-microfarad capacitor to 1500 ohms. At an indication of 0.5 milliamperes, the measurement is to have an error of not more than 5 percent.

24.6 Unless the meter is being used to measure leakage from one part of the unit to another, the meter is to be connected between the accessible parts and the grounded supply conductor.

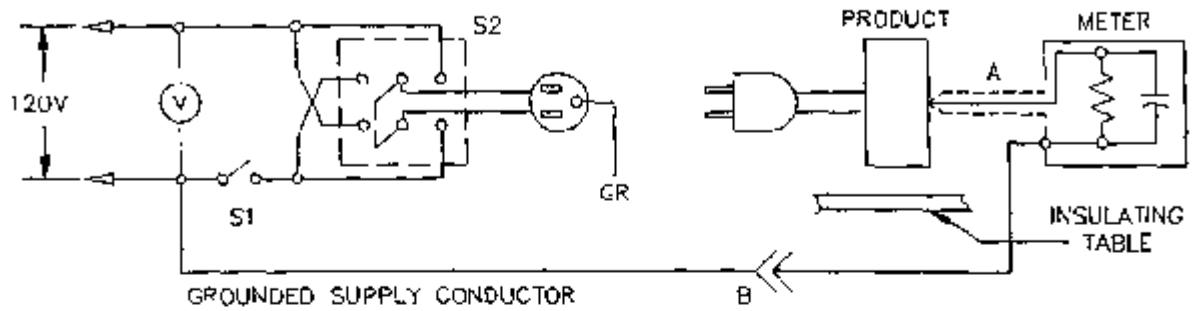
24.7 A sample of the unit is to be tested for leakage current starting with the as-received condition (see 24.8) but with its grounding conductor open at the attachment plug. A resistance load is to be adjusted to draw the rated output of the unit in watts or volt-amperes at rated voltage. This load is to be connected to the output terminals prior to the start of the test sequence. The test sequence, with reference to the measurement circuit, Figure 24.1, is to be as follows:

- a) With switch S1 open, the unit is to be connected to the measurement circuit. Leakage current is to be measured using both positions of switch S2, and with the unit's switching devices in all their normal positions.
- b) Switch S1 is then to be closed, energizing the unit and the load on the output terminals, and within 5 seconds the leakage current is to be measured using both positions of switch S2 and with the unit switching devices in all their normal positions.
- c) Leakage current is to be monitored until ultimate results are obtained. Both positions of switch S2 are to be used in making this measurement. Ultimate results are considered to be attained by operation for 1 hour.

24.8 For the purpose of 24.7 the as-received condition is to be without prior energization except as may occur as part of the production line testing.

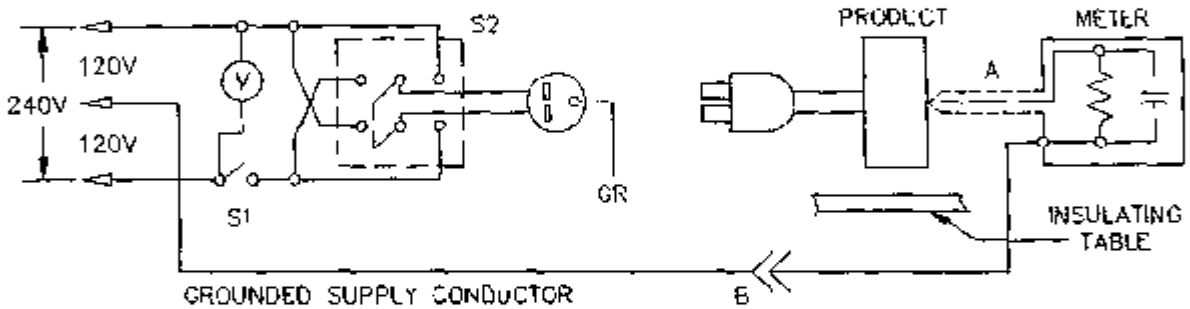
24.9 A sample is to be subjected to the complete leakage current test program as covered by 24.7 without interruption for other tests. The unit shall then comply with the Dielectric Voltage Withstand Test, Section 32.

**Figure 24.1**  
**Leakage-current measurement circuit**



LC100

Unit intended for connection to a 120-volt supply



LC200

Unit intended for connection to a 3-wire, grounded neutral power supply, as illustrated above

A PROBE WITH SHIELDED LEAD

B SEPARATED AND USED AS CLIP WHEN MEASURING CURRENTS FROM ONE PART OF DEVICE TO ANOTHER

\*Figure 24.1 revised September 25, 1998\*

**25 Leakage Current Test and Dielectric Voltage Withstand Test After Humidity Exposure**

25.1 A unit shall comply with the Leakage Current Test, Section 24, and Dielectric Voltage Withstand Test, Section 32, following exposure for 48 hours to air having a relative humidity of  $88 \pm 2.0$  percent at a temperature of  $32.0 \pm 2.0^\circ\text{C}$  ( $89.6 \pm 3.6^\circ\text{F}$ )

25.2 To determine whether a unit complies with the requirement in 25.1, a sample of the unit at a temperature just above  $34.0^\circ\text{C}$  ( $93.2^\circ\text{F}$ ) is to be conditioned for 48 hours in a humidity chamber maintained as specified in 25.1. Following the conditioning, the sample is to be tested unenergized as described in 24.7(a), and then energized and tested as described in 24.7(b) and 24.7(c). The test is to be discontinued when the leakage current stabilizes or decreases. The sample is then to be subjected to the Dielectric Voltage Withstand Test, Section 32.

**26 Maximum Output Voltage Test**

26.1 The maximum output voltage under any load condition (including no load) between any two output terminations of a unit shall not be more than the peak voltages specified in 14.2.2 when the primary is connected to the supply circuit. The Exception to 14.2.2 does not apply to this requirement. See 26.3.

26.2 If a unit has more than one pair of output terminations, the output voltage mentioned in 26.1 is to be measured with any combination of interconnections of the output terminations.

26.3 The maximum voltage between output terminations of a multiple output unit may exceed the values specified in 26.1 when the output terminations are interconnected, if the following conditions are met:

- a) The maximum output voltage between any two terminations is not more than the values indicated in 26.1 when no connections are made between the output terminations, and
- b) The unit is marked in accordance with 49.2.10.

**27 Maximum Input Test**

27.1 The primary input of a unit shall not be more than 660 watts when the unit is connected to the supply circuit with any condition of secondary load, including the short-circuiting of any combination of outputs.

27.2 To determine compliance with 27.1, one sample of the unit is to be connected to the load specified in Table 23.3, and the loads are to be adjusted to cause maximum input to the sample. The supply circuit is then to be de-energized and the sample is to be allowed to cool to room temperature. The supply circuit is then to be energized a second time and the input power measured within 15 seconds after application of voltage to the primary windings.

**28 Output Current and Power Test****28.1 General**

28.1.1 The maximum output current and output volt-amperes specified in 26.2 and 26.3 are to be determined using a current meter and a watt meter. A resistive load is to be adjusted to result in maximum reading of the meters. With no further adjustment of the load, the sample is to be de-energized and cooled to room temperature. The sample is then to be energized and maximum current and wattage measurements are to be taken at the time specified in 28.2.

*Exception:* An inherently limited or a not inherently limited Class 2 transformer that complies with the requirements in UL 1585, Standard for Class 2 and Class 3 Transformers, is not required to be tested in accordance with 28.2 or 28.3.



**28.2 Inherently limited**

28.2.1 Under any condition of resistive loading - including short-circuit and interconnection of outputs when not prohibited by marking - the maximum output current shall not exceed the value specified in Table 28.1 and the maximum output volt-amperes shall not be more than 100 volt-amperes, except as indicated in 28.2.3 and 28.3.1, for the following conditions, as applicable

- a) For a unit which employs a transformer with no form of protection, the measurement is to be made 60 seconds after the unit is connected to the source of supply
- b) For a unit which employs a transformer and an energy limiting impedance or energy limiting circuit (a resistor, a PTC device, or similar circuitry) required for the purpose (See 2.7), the measurement is to be made five seconds after the unit is connected to the source of supply
- c) For a unit which employs a transformer and either a thermal cutoff, a fuse, or both, the all protection is to be defeated during the test and the measurement made 60 seconds after the unit is connected to the source of supply
- d) For a unit that employs a transformer and a combination of a limiting impedance or circuit required for the purpose, and a protective device (such as a thermal cutoff, a fuse, or both), all protective devices are to be defeated and the measurement is to be made five seconds after the unit is connected to the source of supply
- e) For a unit that employs a dc input, in accordance with 1.1, and a combination of a limiting impedance or circuit required for the purpose, and a protective device (i.e. thermal cutoff, fuse, or both), the protective device is to be defeated and the measurement is to be made five seconds after the unit is connected to the source of supply

\*28.2.1 revised August 2, 1996\*

No Text on This Page

**Table 28.1**  
**Maximum output current for inherently limited units**

Circuit voltage ( $V_{max}$ ) <sup>a,b</sup> ac or dc Volts	Maximum nameplate ratings		Maximum output current ( $I_{max}$ ) <sup>c</sup> Ampere
	Volt-Ampere	Ampere	
0 - 20	$50 \times V_{max}$	50	50
Over 20 to 30	100	$100/V_{max}$	50
Over 30 to 60, dc only	100	$100/V_{max}$	$150/V_{max}$

<sup>a</sup>  $V_{max}$  Maximum output voltage regardless of load with rated input voltage applied

<sup>b</sup> Voltage ranges shown are for sinusoidal alternating current and continuous direct current. For nonsinusoidal alternating current, maximum voltage shall not be greater than 42.4 volts peak. For direct current interrupted at a rate of 10 - 200 hertz, maximum voltage shall not be greater than 24.8 volts.

<sup>c</sup>  $I_{max}$  is maximum output current regardless of load

28.2.2 If the value of current and power cannot be obtained due to operation of a protective device, damage to the transformer, or the like

- a) The values are to be extrapolated, if feasible, from the values measured earlier in the time period, or
- b) A protective device may be shunted to obtain the required data

28.2.3 The current between output terminations of a multioutput unit may exceed the limit specified in 28.2.1 when output terminations are interconnected if the following conditions are met

- a) The output current between any two terminations is not more than the limit specified in 28.2.1 when no connections are made between output terminations of separate outputs, and
- b) The unit is marked in accordance with 49.2.10

**28.3 Not inherently limited**

28.3.1 The values of the output current and volt-ampere specified in 28.2.1 may be exceeded if the unit includes means to automatically de-energize the output circuit (see 9.10), provided that such values do not exceed those specified in Table 28.2. There shall be no emission of flame or molten metal from the unit enclosure and no other evidence of a risk of fire or electric shock.

28.3.2 To determine if a unit complies with the requirement in 28.3.1, the unit is to be allowed to deliver the test current to a resistance load, with the primary connected to a source of supply. The unit is to be draped with a double layer of cheesecloth conforming to the device outline. Charring, glowing, or flaming of the cheesecloth is unacceptable. After this test, the unit is to be subjected to the dielectric voltage withstand test specified in 32.1.1.

**Table 28.2**  
**Maximum output current and volt-amperes for not inherently limited units**

Circuit voltage ( $V_{max}$ ) ac or dc, volts	Maximum nameplate ratings		Maximum output ( $I_{max}$ ), amperes	Maximum output volt- amperes, ( $VA_{max}$ )	Maximum overcurrent protection rating, amperes
	Volt-amperes	Amperes			
0 - 20	$50 \times V_{max}$	50	$1000/V_{max}$	250 <sup>e</sup>	50
Over 20 to 30	100	$100/V_{max}$	$1000/V_{max}$	250	$100/V_{max}$
Over 30 to 60, dc only	100	$100/V_{max}$	$1000/V_{max}$	250	$100/V_{max}$

<sup>a</sup>  $V_{max}$  is the maximum output voltage regardless of load with rated input voltage applied

<sup>b</sup> Voltage ranges shown are for sinusoidal alternating current and continuous direct current. For nonsinusoidal alternating current maximum voltage shall be greater than 42.4 volts peak. For direct current interrupted at a rate of 10 - 200 hertz maximum voltage shall not be greater than 24.8 volts.

<sup>c</sup>  $I_{max}$  is maximum ampere output regardless of load after operation as specified in 28.2.1

<sup>d</sup>  $VA_{max}$  is maximum volt-ampere output regardless of load after operation as specified in 28.2.1

<sup>e</sup> Maximum volt-amperes is 350 if maximum circuit voltage is 15 or less.

Table 28.2 revised July 7, 1995\*

**29 Calibration of Overcurrent Protection Devices Test**

29.1 A protective device provided as a part of a not inherently limited unit shall operate in not more than the time indicated in Table 29.1 when the unit is delivering the specified secondary current. There shall be no emission of flame or molten metal from the enclosure and no evidence of a risk of fire or electric shock as described in 38.1.2. The unit shall withstand the dielectric voltage withstand test as specified in 32.1.1(a), applied between the primary winding and secondary windings, and between the primary and exposed dead metal parts.

*Exception: This test need not be conducted if a suitably rated (see Table 28.2) and calibrated fuse is provided in the output circuit.*

29.2 During the test, the grounding means is to be connected to ground through a 3-ampere nontime-delay fuse and the unit is to be draped with a double layer of cheesecloth conforming to the outline of the unit.

**Table 29.1**  
**Maximum acceptable time for protection device operation**

Rated secondary potential, volts	Secondary test current, amperes	Maximum time for protective device to operate, minutes
20 or less	10 <sup>a</sup>	2
20 or less	6.75 <sup>b</sup>	60
Over 20 to 30	200V <sub>max</sub> <sup>a,c</sup>	2
Over 20 to 30	135V <sub>max</sub> <sup>b,c</sup>	60
Over 30 to 60, dc only	200V <sub>max</sub> <sup>a,c</sup>	2
Over 30 to 60, dc only	135V <sub>max</sub> <sup>b,c</sup>	60

<sup>a</sup> The load is to be adjusted continuously to maintain the test current value shown

<sup>b</sup> After 15 minutes of operation, the load is to be readjusted to return the output current value shown

<sup>c</sup> V<sub>max</sub> is the maximum output voltage regardless of load with rated input

**30 Full-Load Output Current Test**

30.1 A unit shall deliver its rated full-load secondary current continuously

30.2 To determine compliance with the requirement in 30.1, one sample is to be tested as follows. With a variable load as specified in Table 23.3 and an ammeter connected to the output, the primary is to be connected to the supply circuit. The load is to be adjusted to draw rated output current. After 15 minutes of operation, the resistance is to be readjusted, if necessary, to return the current to that value. The test is then to be continued for 1 hour without further adjustment. At the end of 1 hour, the output current shall not be less than 90 percent of the rated load current. An overtemperature- or overcurrent-protective device shall not function during this test.

30.3 If a unit has its output rated in volt-amperes or watts, the rated output current is to be determined by dividing the rated output voltage into the rated output volt-amperes or watts.

**31 Normal Temperature Test**

31.1 The temperature rises on various materials and parts shall not exceed the limits specified in Table 31.1 when the unit is operated as specified in 31.2 - 31.5. Upon completion of this test, the unit shall comply with the Dielectric Voltage Withstand Test, Section 32.

31.2 For a direct plug-in unit, this test is to be conducted in both the horizontal and vertical positions. For a cord-connected unit, this test is to be conducted in all likely mounting positions. A sample is to be operated with the primary energized from a circuit as specified in 23.3 and 23.4. Each output is to be loaded as specified in 23.6. A battery charger which is likely to be used for consecutive charging of batteries is to be tested as specified in 31.5 and 31.6.

**Table 31.1**  
**Maximum acceptable temperature rises**

Materials and components	°C	°F
<b>A. COMPONENTS</b>		
1 Deleted		
2 Rubber- or thermoplastic-insulated conductors <sup>a</sup>	35	93
3 Silicon components <sup>b</sup>	75	135
<b>B. ELECTRICAL INSULATION - GENERAL</b>		
1 Class 105 insulation systems		
Resistance method	75	135
Thermocouple method	65	117
2 Class 120 insulation systems		
Resistance method	95	171
Thermocouple method	85	153
3 Fiber employed as electrical insulation	85	117
4 Phenolic composition <sup>a</sup>	125	225
5 Varnish-cloth insulation	60	108
<b>C. SURFACES</b>		
1 Surface temperature, metal <sup>c,d</sup>	30	84
2 Surface temperature, nonmetallic <sup>c,e</sup>	50	90
3 Wood or similar material	65	117

<sup>a</sup> The limitation on phenolic composition, rubber and thermoplastic insulation does not apply to compounds that have been investigated and found to be acceptable for use at a higher temperature. The maximum acceptable temperature rise in any case is 25°C (77°F) less than the acceptable temperature limit in question.

<sup>b</sup> Does not apply to a material that has been investigated and found acceptable for a higher temperature.

<sup>c</sup> A material having a coefficient of thermal conductivity greater than 2.419 Btu per hour per square foot per foot per degree Fahrenheit (0.01 cal/cm<sup>2</sup>cm/°C) is considered to be metal. See 31.7.

<sup>d</sup> 45°C (113°F) rise for semipermanent mounted units marked as required by 49.2.5.

<sup>e</sup> 65°C (147°F) rise for semipermanent mounted units marked as required by 49.2.5.

\*Table 31.1 revised July 7, 1995\*

31.3 If the load mentioned in 31.2 and specified in 23.8 includes a variable resistance, the load is to be adjusted after 15 minutes of operation, if necessary, to return the output to the original value. If the load consists of a battery, the battery shall be discharged as specified in 23.10, 23.11, or 23.12, as applicable.

31.4 If a battery charger which is not likely to be used for consecutive charging of batteries is tested with a battery load, the test is to be continued until temperatures peak. The load is to be replaced by a second discharged battery. The test is terminated when temperatures peak during the second load condition.

31.5 A battery charger which is likely to be used for consecutive charging of batteries is to be tested with the intended battery load. The test is to be conducted in accordance with 31.6.

31.6 With respect to 31.5, a charger is to be tested in accordance with the following:

- a) For a charger with no charge status indicator, the test is to be continued until temperatures peak. The load is to be replaced with another discharged battery. This sequence is to be repeated until maximum temperatures are obtained.
- b) For a charger with a visual charge status indicator, the test is to be continued until the visual indicator indicates that the charge cycle is complete. The load is to be replaced with another discharged battery. This sequence is to be repeated until maximum temperatures are obtained.
- c) For a charger with a charge time marking or instruction, the test is to be continued until the specified charge time has elapsed. The load is to be replaced with another discharged battery. This sequence is to be repeated until maximum temperatures are obtained.
- d) For a charger with both a visual charge status indicator and a charge time marking or instruction, the test is to be continued until the specified charge time has elapsed or until the visual indicator indicates that the charge cycle is complete, whichever occurs first. The load is to be replaced with another discharged battery. This sequence is to be repeated until maximum temperatures are obtained.

31.7 With reference to footnote c to Table 31.1, the thermal conductivity of a material can be obtained by comparison with materials that have known thermal conductivities. Samples of materials with known values of the constant and a sample of the material for which the value is unknown are to be fixed to a heated metal plate. All samples are to be of the size used in the unit. The temperatures of the faces of the reference samples opposite the heated metal plate are to be plotted as a function of the constant. The constant of the material for which the value is unknown is derived from the curve by reading off the value corresponding to the temperature attained by the sample under investigation.

31.8 All values in Table 31.1 are based on an assumed ambient temperature of 25°C (77°F), but a test may be conducted at any ambient temperature within the range specified in 23.7.

31.9 A temperature is considered to be constant when three successive readings taken at intervals of 10 percent of the previously elapsed duration of the test, but not less than 15 minutes, indicate no further increase.

31.10 Except when it is specifically stated that the temperature determinations are to be made by the resistance method, temperatures are to be measured by means of thermocouples. The junction of the thermocouple is to be secured in intimate contact with the point of the surface at which the temperature is to be measured.

31.11 Thermocouples are to consist of wires not larger than No. 24 AWG (0.21 mm<sup>2</sup>) and not smaller than No. 30 AWG (0.05 mm<sup>2</sup>). When thermocouples are used in determining temperatures in electrical equipment, it is common practice to employ thermocouples consisting of No. 30 AWG iron and constantan wire and a potentiometer-type instrument, and such equipment is to be used whenever reference temperature measurements by thermocouples are necessary. The thermocouples and related instruments are to be accurate and calibrated in accordance with accepted laboratory practice. The thermocouple wire is to comply with the requirements for special thermocouples as listed in the table of limits of error of thermocouples in Temperature Measurement Thermocouples, ANSI MC96.1.

31.12 Coil and winding temperatures are to be measured by thermocouples located on exposed surfaces, except the resistance method is to be used for a coil that is inaccessible for mounting of these devices such as a coil

- a) Immersed in sealing compound,
- b) Wrapped with thermal insulation, or
- c) Wrapped with a material, such as cotton, paper, or rayon more than 1/32 inch (0.8 mm) thick

31.13 The temperature rise of a copper winding is determined by the resistance method by comparing the resistance of the winding at a temperature to be determined with the resistance at a known temperature according to the formula

$$\Delta t = \frac{R}{r} (k + t_1) - (k + t_2)$$

in which

$\Delta t$  is the temperature rise,

$R$  is the resistance of the coil at the end of the test in ohms (see 31.14),

$r$  is the resistance of the coil at the beginning of the test in ohms;

$k$  is 234.5 for copper;

$t_1$  is the room temperature in degrees C at the beginning of the tests, and

$t_2$  is the room temperature in degrees C at the end of the test

The winding is to be at room temperature at the start of the test

31.14 Because it is generally necessary to de-energize the winding before measuring  $R$ , the value of  $R$  at shutdown may be determined by taking several resistance measurements at short intervals, beginning as quickly as possible after the instant of shutdown. A curve of the resistance values against time may be plotted and extrapolated to give the value of  $R$  at shutdown. Instrumentation by which  $R$  can be measured while the coil is energized may be used

## 32 Dielectric Voltage Withstand Test

### 32.1 General

32.1.1 One minute after the applicable test, the unit shall withstand for 1 minute without breakdown the application of a potential. The test potential shall be

- a) One thousand volts ac plus twice the maximum rated voltage between

- 1) The primary circuit and accessible dead metal parts, and
- 2) The primary and secondary circuit or circuits



- b) One thousand volts ac plus two times the sum of secondary voltages between secondary windings for units described in 26.3 or 28.2.3
- c) Five hundred volts ac between a secondary circuit and dead metal parts
- d) A dc potential of 1.414 times  $(2V + 1000)$ , where  $V$  is the rms supply voltage, between the terminals of a capacitor used for radio-interference elimination or arc suppression

*Exception* If an ac potential results in excessive leakage through capacitors during the test specified in (a), (b), and (c) the capacitors shall be removed from the circuit for the ac potential. With the capacitors connected in the circuit, the unit shall withstand a dc potential of 1.414 times the ac rms potential between the points specified.

32.1.2 To determine if a unit complies with the requirements in 32.1.1, it is to be tested by means of a transformer of 500-volt-ampere capacity or larger, having an output voltage that is essentially sinusoidal or continuous direct current, as applicable, and can be varied. The applied potential is to be increased from zero until the required test level is reached, and is to be held at that level for 1 minute. The increase in applied potential is to be at a substantially uniform rate and as rapid as is consistent with its value being correctly indicated by a voltmeter.

*Exception* A 500 volt-ampere or larger capacity transformer need not be used if the transformer is provided with a voltmeter to measure directly the applied output potential.

32.1.3 With respect to the electrical stress level mentioned in 10.2, each capacitor shall be subjected to a test potential as specified in 32.1.1(d).

## 32.2 Induced potential

32.2.1 One sample of a transformer as described in Exception No. 1 to 11.2.8 and 11.2.9 is to be subjected to this test. While in a heated condition from operation as described in Normal Temperature, Section 31, the primary winding shall withstand without breakdown an alternating potential of twice the rated voltage of the winding. The potential is to be

- a) Applied for 7200 cycles if the frequency is 120 hertz or more, or
- b) 60 seconds if the frequency is less than 120 hertz.

A higher test frequency may be necessary so the core is not saturated.

32.2.2 The test voltage is to be started at one-quarter or less of the full value and increased to full value in not more than 15 seconds. After being held for the time specified, the voltage is to be reduced within 5 seconds to one-quarter or less of the maximum value and the circuit is to be opened.

32.2.3 With reference to 32.2.1, a transformer may be conditioned in an oven to obtain the temperature reached in the Normal Temperature Test, Section 31 before conducting the induced potential test.

**33 Endurance Test on Overcurrent- and Overtemperature-Protective Devices**

33.1 One sample of a unit employing a manually reset overcurrent- or overtemperature-protective device shall be operated under the condition of maximum obtainable output current, including short circuit, and the protector shall be cycled for 50 operations as quickly as the protector can be reset. During this test the grounding means, if provided, is to be connected to ground through a 3-ampere nontime delay fuse. A risk of fire or electric shock as described in 38.1.2 shall not result and the temperature rise at any point on the enclosure shall not exceed 65°C (117°F). The protector device shall be operational upon completion of the test.

33.2 One sample of a unit employing an automatically reset protective device or a protector that stays open as long as the overload is connected shall be connected and operated under the conditions described in 33.1 for 15 days but not less than 2000 cycles. A risk of fire or electric shock -- see 38.1.2 -- shall not result and the temperature rise at any point on the enclosure shall not exceed 65°C (117°F). Temperatures are to be measured at the end of the test. The protective device shall be operational upon completion of the test.

33.3 The test described in 33.2 shall be conducted for 24 hours for units incorporating thermostats, the acceptability of which has been determined by the requirements in the Standard for Temperature-Indicating and -Regulating Equipment, UL 873.

**34 Repeat Dielectric Voltage Withstand Test**

34.1 Following the endurance test, the unit is to be subjected to a repeat dielectric voltage withstand test as described in Section 32.

**35 Overload and Endurance Tests on Switches and Controls**

35.1 A switch or other control that has not been shown to be acceptable for the purpose in accordance with 8.6 shall perform acceptably when subjected to an overload test consisting of 50 cycles of operation making and breaking the applicable load, and to an endurance test consisting of 6000 cycles of operation at rated load. There shall be no electrical or mechanical breakdown of the device, undue burning or pitting of the contacts as a result of the overload or endurance test, or opening of the fuse in the grounding connection.

35.2 For the test specified in 35.1, the output of the unit is to be connected to its intended load based on its input and output ratings and to a supply having a frequency specified in 23.4. For the overload test, the supply voltage is to be increased to 110 percent of the maximum test voltage specified in 23.1. For the endurance test, the test voltage specified in 23.1 is to be used. During these tests, exposed dead metal parts of the unit are to be connected to ground through a 3-ampere nontime-delay fuse. The device is to be operated at a rate of not more than 10 cycles per minute, except that a faster rate of operation may be employed if agreeable to those concerned.

**36 Overload Test on Secondary Switches**

36.1 If tests are required in accordance with 8.7, a switch or other control device shall be tested as described in 36.2. The performance is unacceptable if

- a) The fuse in the grounding connection opens during the test,
- b) There is welding of contacts or mechanism breakdown, or
- c) The device is otherwise incapable of completing the tests.

36.2 To determine if a secondary circuit switch or other control device is capable of performing acceptably in the overload test mentioned in 8.7, the unit is to be connected to a circuit supplying the maximum test voltage as specified in 23.1 and the rated frequency in accordance with 23.4. The switch is to be caused to make and break 150 percent of the rated secondary load current or maximum obtainable, whichever is less. During the test, exposed dead-metal parts of the unit are to be connected to the polarity opposite to the switching device through a 3-ampere fuse. The device is to be operated for 50 cycles at a rate of not more than 10 cycles per minute, except that a faster rate of operation may be employed if agreeable to those concerned.

### 37 Operation Test

37.1 A switch or other controller required to be tested in accordance with 8.8 is to be subjected to 1000 operations through all positions. The operations are to be with no electrical load. There shall be no mechanical breakdown of the switching mechanism or loosening of parts.

37.2 After the 1000 operations, the switch shall be capable of making and breaking the circuit for 50 cycles of operation as indicated in the Overload and Endurance Tests on Switches and Controls, Section 35. For a voltage selector switch, the test voltage is to be based on the highest rated voltage.

### 38 Abnormal Tests

#### 38.1 General

38.1.1 A unit shall not emit flame or molten metal or become a risk of fire or electric shock when subjected to the following tests: output loading, reverse polarity, switch position, component breakdown, and when required, the printed wiring board abnormal operation test. Each abnormal test shall be followed by a dielectric voltage withstand test as required by 32.1.1(a).

38.1.2 A risk of fire or electric shock is considered to exist if any of the following occur:

- a) Opening of the grounding fuse,
- b) Charring of cheesecloth,
- c) Emission of flame or molten material from the unit enclosure and output cord, if provided,
- d) Any condition that exposes live parts which pose a risk of electric shock as specified in Accessibility of Live Parts, Section 14,
- e) Indication of dielectric breakdown,
- f) For a direct plug-in unit, loss of structural integrity to a degree where the unit cannot be removed from a receptacle immediately after the test without deformation or a risk of electric shock, or
- g) Opening of the branch-circuit overcurrent protective device.

\*38.1.2 revised July 7, 1995\*

38.1.3 Each test is to be conducted on a separate sample unless the manufacturer requests that more than one test be conducted on the same sample.

38.1.4 During each test, the grounding means, if provided, is to be connected to ground through a 3-ampere nontime-delay fuse.

38.1.5 A polarity-protection circuit provided to reduce the likelihood of output-current flow until a battery is connected as intended to the output is to be made inoperative so that the required output current will flow.

38.1.6 During all abnormal tests, the unit is to be draped with a double layer of cheesecloth conforming to the outline of the unit.

*Exception: The cheesecloth need not be used during the short-circuit condition of the output loading test.*

38.1.7 The temperature rises specified are based on an assumed ambient temperature of 25°C (77°F), but a test may be conducted at any ambient temperature of 21 – 30°C (70 – 86°F). However, if the operation of an automatic thermal control during the test limits the temperatures under observation, no temperature higher than 25°C (77°F) plus the specified maximum rise is acceptable.

## 38.2 Output loading

38.2.1 One sample of a unit shall be tested under the short-circuit output condition. If this does not result in the most severe output loading, the unit shall be tested under the most severe condition, which may be maximum obtainable output current, or either of the conditions described in 38.2.3 and 38.2.4. A fuse or circuit breaker provided as part of the unit is to remain in the circuit, and a user-replaceable fuse is to be replaced by the largest fuse the fuseholder will accept. The test is to be continued until the internal protection opens, constant temperatures are attained, or the transformer winding opens. For a transformer as described in 11.2.4, if an automatically reset protector is provided, or if constant temperatures are attained, the test is to be continued for 15 days. For all other units, if an automatically reset protector is provided, or if constant temperatures are attained, the test is to be continued for 7 hours. A manually reset protector is to be operated for 10 cycles. The protector contacts are to be operative upon completion of the test.

38.2.2 During the short-circuit condition on a direct plug-in unit, the temperature rise on the enclosure shall not exceed 65°C (147°F).

*Exception: A temperature rise of 125°C (255°F) is acceptable if the unit permanently opens within 1 hour after initiation of the test.*

38.2.3 In regard to 38.2.1, for some designs it may be necessary to conduct the test at conditions of maximum power transfer and no secondary load to determine the most severe operating condition.

38.2.4 For units with more than one output, one output is to be loaded as specified in 38.2.1 while the other outputs are open-circuited or loaded to rated conditions in accordance with Table 23.2, whichever results in a more severe operating condition.

38.2.5 If short-circuiting causes operation of an automatically or manually reset protective device, compliance is also to be determined using the maximum load value that allows continuous operation.

38.2.5 If short circuiting causes opening of a fuse, the unit is to be tested with a load current that causes the maximum current to flow in the fused circuit for 7 hours without opening the fuse. The maximum current to be delivered through the fuse is to be determined by the following formula:

$$I_{FC} = 1.1 (I_{FR}) [1 + n(0.02)]$$

in which

$I_{FC}$  is the fuse overload current,

$I_{FR}$  is the fuse current rating, and

$n$  is an integer that causes the unit to run such that  $I_{FC}$  is able to be maintained at its maximum for 7 hours.

\*38.2.6 revised August 2, 1998\*

38.2.7 When conducting this test, at least two load conditions are to be used, one load condition where  $I_{FC}$  ( $n=c$ ) results in 7 hours of operation, and one load condition where  $I_{FC}$  ( $n=c+1$ ) results in opening of the fuse prior to 7 hours of operation. Prior to each test, the sample is to be at room temperature. See 38.2.6.

38.2.8 If short circuiting causes opening of a thermal cutoff or a single-operation bimetallic device, the device is to be shunted and a thermocouple attached to its body. The load current is to be raised slowly until a temperature equal to the rated trip temperature of the device plus 5°C (9°F) is reached. Without further readjustment of the load, the unit is to be operated for the remainder of the 7 hour period.

38.2.9 If short circuiting causes opening of a winding, tests are to be conducted with the secondary winding loaded to a current ( $I_L$ ) equal to the rated current ( $I_R$ ) plus X percent of the difference between the short-circuit current ( $I_{SC}$ ) and the rated current ( $I_R$ ). In the tests, the values of X are to be 75, 50, 25, 20, 15, 10, and 5, in that order. If a load current results in 7 hours of continuous operation, further tests need not be conducted. For the tests, a variable resistance load is to be adjusted to the required value as quickly as possible and readjusted, if necessary, 1 minute after application of the source of supply.

38.2.10 For a unit employing regulating circuitry where short circuiting the output results in 7 hours of continuous operation, tests are to be conducted with the output loaded to deliver maximum output power for 7 hours without shut-down of the unit.

### 38.3 Transformer burnout

38.3.1 A unit having components in the output circuit shall not emit flame or molten metal or result in a risk of fire or electric shock as described in 38.1.2 while first operating as described in the temperature test, followed by operation under the loading conditions described in 38.3.3 for linear designs, 38.3.4 for switch mode designs. Each test is to be followed by a dielectric voltage withstand test described in 32.1.1(a) with the potential applied between primary and secondary windings. During this test the grounding means, if provided, is to be connected directly to ground. The unit is to be operated continuously:

- a) Until ultimate conditions are observed, including opening of a thermal cutoff or a similar device.
- b) For 7 hours if temperatures stabilize or cycling of an automatically reset protector occurs, or
- c) For 50 cycles of resetting a manually reset protector.

38.3.2 If a transformer has more than one secondary winding or a tapped secondary winding, separate tests are to be conducted for each winding, or each section of a tapped winding, with the other windings loaded or unloaded as may occur in service unless it can be determined that one condition will produce the most unfavorable results.

38.3.3 For linear designs, a resistive load that will draw three times the normal input alternating current or maximum obtainable, whichever is less, is to be connected directly to the transformer secondary winding with the unit connected to the maximum test voltage.

38.3.4 For switch mode designs, a resistive load is to be connected at a point in the secondary circuit where energy limiting circuitry (see 2.7) is not affected. The load is to be adjusted to result in three times the normal input current to the transformer or maximum obtainable, whichever is less.

#### 38.4 Reverse polarity

38.4.1 For a device intended for charging batteries and provided with nonpolarized output connections, the external output leads are to be connected in reverse polarity to a fully charged battery intended for the application. The unit is then to be connected to its maximum test voltage, and operated until the ultimate condition is observed, or 4 hours if cycling of an automatically reset protector occurs.

#### 38.5 Switch position

38.5.1 In accordance with 12.2.3 and 12.2.4, a unit employing a primary-voltage selector switch shall be connected to the maximum test voltage and to its rated normal load. The switch is then to be adjusted to the lowest voltage position. Operation of the unit is to continue:

- a) Until ultimate conditions are observed,
- b) For 7 hours, if cycling of an automatically reset protector occurs, or
- c) For 10 cycles of resetting a manually reset protector.

38.5.1 revised May 25, 1995

#### 38.6 Component breakdown

38.6.1 When tested in accordance with 38.6.2 a unit having components - such as diodes, resistors, transistors, capacitors, and the like - with a single component fault of short or open, shall not result in:

- a) The output capacity exceeding Class 2 characteristics, and
- b) Any condition as specified in 38.1.2.

*Exception No. 1 This test need not be conducted for component breakdowns that result in open or short circuiting of the output, in short circuiting of the transformer, or for a component in a Class 2 circuit. See the Transformer Burnout Test, 38.3.*

*Exception No. 2 This test need not be conducted if the components have been investigated and found to have permanence and stability so as to not decrease their limiting capabilities. See 10.1. For the purpose of this test, capacitors connected across the output are not considered likely to open.*

No Text on This Page

**Table 39.1**  
**Equivalency factors for insulation materials<sup>a</sup>**

Generic material	Equivalency Factor (EF)
Electrical grade paper, fiber, or pressboard	1
Impregnated rag paper	1.3
Acetate sheet	1.5
Polyvinyl chloride (PVC)	1.3
Silicone rubber (SIR)	0.5
Impregnated glass or acetate cloth	1.2
Polyester	2
Polyethylene terephthalate (PETP)	2
Fluorinated ethylene propylene (FEP)	3
Polytetrafluoroethylene (PTFE)	3
Aramid paper	2
Polyamide (PI)	5
<sup>b</sup> Mica	4.7

<sup>a</sup> See 39.3

<sup>b</sup> EF applies if not subject to mechanical damage

#### 40 Strain Relief Test

40.1 With internal connections disconnected, the strain relief means provided for a supply cord, or a multi-conductor output cord where the interconnection of outputs exceeds Class 2 shall withstand the force described in 40.3 applied to the cord for 1 minute without displacement or breakage of the cord or deformation of its anchoring surface.

40.2 The output wiring of a unit other than one having a multi-conductor cord as specified in 40.1 shall withstand the force described in 40.4 applied for 1 minute. The results are considered acceptable if, with the output wiring connected internally, movement of the cord does not result in:

- a) A reduction of spacings to primary or dead metal parts,
- b) Damage to the transformer or enclosure, or
- c) Interruption of the output wiring.

40.3 A 35 lb (130 N) force is to be suspended from the cord and supported by the unit so that the strain relief means is stressed from the most severe angle that the construction of the unit permits.

40.4 For units employing a flexible output cord, or a multi-conductor cord where the interconnection of outputs does not exceed Class 2, a 20 pound force (89 N) is to be applied to the cord and supported by the unit so that the strain relief means is stressed from the most severe angle that the construction of the unit permits. For units employing output wiring consisting of separate leads, a 10 pound force (44 N) is to be applied to each lead.



38.7.2 During this test, if a printed wiring board trace opens, the gap is to be electrically shorted and the test continued until ultimate results occur. This applies to each occurrence. If the circuit is interrupted by the opening of a component other than described in 38.7.3, the test is to be repeated two more times using new components as necessary.

38.7.3 Operation of an overcurrent protective device other than the branch circuit overcurrent protective device is acceptable.

38.7.4 A sample of the unit employing the printed wiring board is to be connected to its nominal rated supply circuit as specified in Section 23. A foil trace is to be short-circuited to each of its adjacent traces that do not have the spacing specified in Table 22.1 or 22.2 one at a time.

38.7.5 The test is to be continued for 1 hour or until one of the conditions described in 38.1.2 occurs. However, if at the end of 1 hour no condition described in 38.1.2 occurs, but indications are that such a condition may eventually occur, the test is to be continued until ultimate results are obtained (usually 7 hours).

### 39 Tests on Insulating Materials

39.1 If required by 11.2.1(b), 11.2.2(c), 11.2.5(c), 11.2.6(c), 11.2.10(b), insulating material shall be subjected to the test described in 39.2.

*Exception:* The insulating material need not be subjected to this test if it is generic material noted in 39.3 and Table 39.1.

39.2 The insulating material is to be placed between two opposing electrodes. The electrodes are to be cylindrical brass or stainless steel rods 1/4 inch (6.4 mm) in diameter, with edges rounded to a 1/32-inch (0.8 mm) radius. The upper moveable electrode is to weigh  $50 \pm 2$  grams to exert sufficient pressure on the specimen to provide good electrical contact. The test potential is to be increased to the test value and the maximum test potential is to be maintained for 1 second. The result is acceptable if there is no dielectric breakdown.

39.3 With reference to the Exception to 39.1, insulation may be of a generic material type specified in Table 39.1 where the layer(s) of each generic material is of a minimum thickness such that all layers collectively are greater than or equal to the minimum thickness required (T).

$$T \leq A_1(EF_1) \pm A_2(EF_2) \pm A_3(EF_3) \dots$$

in which

$A_1$ ,  $A_2$ , and  $A_3$  denote the total thickness of each generic material type.

$EF_1$ ,  $EF_2$ , and  $EF_3$  denote the equivalency factor specified in Table 39.1 for the generic material type corresponding to  $A_1$ ,  $A_2$ ,  $A_3$ , and

T is the thickness requirement for electrical grade paper.

#### 40A Push-Back Relief Test

40A 1 To determine compliance with 16 2, a product shall be tested in accordance with 40A 2 without occurrence of any of the conditions specified in or 16 2(a) - (d)

\*40A 1 added September 25, 1988\*

40A 2 The supply cord or lead is to be held 1 inch (25.4 mm) from the point where the cord or lead emerges from the product and is then to be pushed back into the product. When a removable bushing which extends further than 1 inch is present, it is to be removed prior to the test. When the bushing is an integral part of the cord, the test is to be carried out by holding the bushing. The cord or lead is to be pushed back into the product in 1-inch (25.4-mm) increments until the cord buckles or the force to push the cord into the product exceed 6 pounds-force (26.7 N). The supply cord or lead within the product is to be manipulated to determine compliance with 9 2 2 1.

\*40A 2 added September 25, 1988\*

#### 41 Direct Plug-In Blade Secureness Test

41 1 Each blade and the grounding pin, if provided, shall withstand a direct pull of 20 pounds (89 N) for 2 minutes without loosening. The two blades tested together shall also withstand a direct pull of 20 pounds for 2 minutes without loosening.

41 2 To determine whether a unit complies with the requirement in 41 1, it is to be supported on a horizontal steel plate with the blades projecting downward through a hole having a diameter sufficient only to permit the blades to pass through it. A 20-pound (9.1-kg) weight is to be supported by each blade and the grounding pin, if provided, in succession and then by the two blades tested together. In a unit of nonrigid construction - for example, a unit of soft molded material - the displacement of either blade shall not exceed 3/32 inch (2.4 mm) measured 2 minutes after removal of the weight.

#### 42 Direct Plug-In Security of Input Contacts Test

##### 42.1 General

42 1 1 The plug-in blades and the grounding pin shall not loosen to a degree that would introduce a risk of fire or electric shock as a result of the tests described in 42 1 2 and 42 1 3.

42 1 relocated as 42 1 1 July 7, 1995

42 1 2 A unit is to be rigidly supported in the blades-up position. Each blade, in turn, is to be individually subjected to a force of 30 pounds (133 N) applied gradually along the longitudinal axis of the blade in a direction towards the face of the unit. The 30-pound force is to be maintained for 1 minute.

42 2 relocated as 42 1 2 July 7, 1995

42 1 3 The sample used in 42 1 2 is to be retested by being positioned as described in 42 1 2 and subjecting both blades and the grounding pin, if provided, in combination, to a single applied force of 40 pounds (178 N) for 1 minute.

42 3 relocated as 42 1 3 July 7, 1995

##### 42.2 Folding and retractable blade units

42 2 1 In addition to the requirements of 42 1, units employing folding or retractable blades for the input contacts shall be subjected to the testing indicated in 42 2 2 - 42 2 4.

42 2 1 added July 7, 1995

42.2.2 The folding or retractable blades of the unit shall withstand 6000 cycles of rotating the blades from the plug-in position to the fully recessed position. For the purpose of this test, the blade is considered to be in the plug-in position when the actuator is extended, and the blades are in the "out" position and locked in place, as in normal use. The fully retracted position is considered to be when the actuator is retracted and the blades are returned to the "in" position.

42.2.2 added July 7, 1995

42.2.3 At the conclusion of the cycling test of 42.2.2

- a) The unit shall be operational
- b) The unit shall not have any exposed live parts which pose a risk of electric shock, as specified in Section 14, Accessibility of Live Parts,
- c) There shall not be a loss of structural integrity to a degree that the unit is able to be inserted only partially or the unit cannot be removed from a receptacle immediately after the test without deformation or risk of electric shock,
- d) The unit is to comply with the Direct Plug-In Blade Secureness Test, Section 41, and the requirements in 42.1.1 - 42.1.3, and
- e) The blade connections internal to the unit shall not develop a high impedance, as determined by the test of 42.2.4

42.2.3 added July 7, 1995

42.2.4 In order to determine compliance with the requirement specified in 42.2.3(e), the unit is to be subjected to a temperature test in accordance with Section 31, Normal Temperature Test. The temperature test is to be performed both before and after the cycling described in 42.2.2. Particular attention is to be paid to the temperatures between the blades and the point of contact for the blades to determine if the electrical or mechanical integrity of the unit has been altered during the course of the cycling.

42.2.4 added July 7, 1995

### 43 Security of Output Connectors Test

43.1 For a unit provided with wire-binding terminals as output connectors, a terminal or terminal stud shall not turn or cause stress on internal connections when subjected to the test of 43.2.

*Exception: This requirement does not apply to a terminal plate for a wire binding screw, a wire binding screw, or a stud where*

- a) *Dislocation would not result in a reduction of spacings to parts which pose a risk of electric shock, and*
- b) *There is no likelihood of deformation to the extent that live parts which pose a risk of electric shock become accessible as determined by Accessibility of Live Parts, Section 14*

43.2 The appropriate torque specified in Table 43.1 is to be applied for 10 seconds to the terminals in a direction tending to tighten them. The terminals are then to be loosened fully.

43.3 Connection and disconnection of accessories shall not result in loosening of the connectors from a unit.

43.4 To determine compliance with 43.3, accessories are to be attached and detached from the unit 100 times and the connectors examined.

**Table 43.1**  
**Tightening torque for wire-binding screws**

Size of terminal screw, number	Wire sizes to be tested,		Tightening torque	
	AWG	(mm) <sup>2</sup>	pound-inches	(N m)
6	16 - 22	(1.3 - 0.32) <sup>a</sup>	12	(1.4)
8	14	(2.1) <sup>d</sup> and	16	(1.8)
	16 - 22	(1.3 - 0.32) <sup>a</sup>		
10	10 - 14	(5.3 - 2.1) <sup>b</sup> or	20	(2.3)
	15 - 22	(1.3 - 0.32) <sup>a</sup>		

<sup>a</sup> Stranded wire  
<sup>b</sup> Solid wire

**44 Abuse Tests**

**44.1 General**

44.1.1 The enclosure of a unit shall withstand the applicable mechanical abuse tests described in 44.2 - 44.5 without

- a) Making live parts which pose a risk of electric shock accessible to the probe illustrated in Figure 14.2, or
- b) Producing any other condition that would result in a risk of electric shock

44.1.2 The probe illustrated in Figure 14.2 applied as specified in 14.2.3 is to be used to determine whether a live part is accessible

**44.2 Impact on direct plug-in units**

44.2.1 Three samples are to be subjected to this test. Each unit is to be dropped (free fall) three times in succession from a height of 3 feet (914 mm) onto a hardwood surface as described in 44.2.2. Each of the drops is to result in the impact occurring at a point on the unit different from the impact points on the other drops

*Exception: If the manufacturer so elects, fewer samples may be used in accordance with Figure 44.1, wherein each series consists of three drops of the sample. The overall performance is acceptable upon completion of any one of the procedures represented in the figure.*

\*44.2.1 revised July 7, 1985\*

44.2.2 The hardwood surface mentioned in 44.2.1 is to consist of a layer of nominal 1-inch (25.4 mm) thick tongue-and-groove oak flooring mounted on two layers of 3/4-inch (19.1-mm) thick plywood. The assembly is to rest on a concrete floor or the equivalent during the test

44.2.3 After completion of the drop test specified in 44.2.1, each sample is to be subjected to the Dielectric Voltage Withstand Test, Section 32, and to an examination for evidence of development of a risk of fire or electric shock

No Text on This Page

44.4.2 The force specified in 44.4.1 is to be increased from 0 to 20 pounds (0 to 89 N) over a period of 5 seconds applied through the axis of a 1/2 inch (12.7 mm) diameter metal rod, having a flat contact end with the edge rounded to a radius of 1/32 inch (0.8 mm) to eliminate sharp edges. The force is then to be maintained at 20 pounds for 1 minute. The axis of the rod is to be perpendicular to the surface under test. During the test, the unit is to rest on a flat surface in any convenient position, and is to be energized. Shock current between the enclosure and earth, and between any parts of the enclosure between which such currents may exist are to be monitored. The instrumentation used is to be that described in 24.5.

44.4.3 During the rod-pressure test specified in 44.4.1 and 44.4.2, the shock current shall not exceed 7.07 milliamperes peak when the voltage involved exceeds 42.4 volts peak. Following the rod pressure test, the unit is to be subjected to the Dielectric Voltage Withstand Tests, Section 32, and to an examination for evidence of the development of a risk of electric shock.

#### 44.5 Resistance to crushing on direct plug-in units

44.5.1 One sample of the unit shall withstand for 1 minute a steady crushing force of 75 pounds (334 N) applied at right angles to the mounting surfaces. The enclosure is to be tested between two parallel, flat, maple blocks, each not less than 1/2 inch (12.7 mm) thick. One block is to contain slots into which the blades of the device are to be fully inserted. The crushing force is to be applied gradually in a direction normal to the mounting surface.

#### 45 Bonding Conductor Test

45.1 With respect to 21.2.5, a bonding conductor that is smaller than any internal conductor supplying the part to be bonded is acceptable if, using a separate sample for each test, neither the bonding conductor nor the connection opens when

- a) Carrying a current of 40 amperes for 2 minutes, and
- b) A sample is subjected to a limited-short-circuit test using a test current of 200 amperes while connected in series with a nonrenewable fuse rated 20 amperes.

45.2 The test circuit described in 45.1(b) is to have a power factor of 0.9 - 1.0 and a closed-circuit-test voltage as specified in 23.1. The open-circuit voltage is to be 100 - 105 percent of the closed-circuit voltage.

#### MANUFACTURING AND PRODUCTION TESTS

##### 46 Dielectric Voltage Withstand Test

46.1 Each unit shall withstand without electrical breakdown, as a routine production line test, the application of a potential at a frequency within the range of 40 to 70 hertz

- a) Between the primary circuit, including connected components, and accessible dead metal parts that are likely to become energized,
- b) Between primary wiring and secondary wiring, including terminals, and
- c) For units having the spacings specified in Table 22.2, between the primary circuit and dead-metal parts including the core whether accessible or not.

**Figure 44.1**  
**Procedure for impact test**

Series Number	Sample Number											
	1	2	3	1	2	3	1	2	3	1	2	3
1	A	N	N	A	N	N	A	N	N	A	N	N
2	A	N	N	A	N	N	U	A	N	U	A	N
3	A	N	N	U	A	N	A	N		U	A	

Arrows indicate sequence of test procedure

A - Acceptable results from drop

U - Unacceptable results from drop

N - No test necessary

SA1162

\*Figure 44.1 added July 7, 1995\*

**44.3 Impact on cord connected units**

44.3.1 Each of three samples is to be subjected to a single impact of 5 foot-pounds (6.78 N m) on any surface that is exposed to a blow during intended use. This impact is to be produced by dropping a steel sphere, 2 inches (51 mm) in diameter and weighing approximately 1.18 pounds (535 g), from a height of 51 inches (1.30 m). The steel sphere is to strike the surface in a location different from those in the other two impacts. For surfaces other than the top of an enclosure, the steel sphere is to be suspended by a cord and allowed to swing as a pendulum dropping through a vertical distance of 51 inches (1.30 m).

*Exception: The test of 44.3.1 may be performed on one sample impacted three times, in different locations.*

\*44.3.1 revised July 7, 1995\*

44.3.2 If necessary to determine whether a unit complies with the requirements in 44.1.1 following the impact test described in 44.3.1, the dielectric voltage withstand test required by 32.1.1 is to be applied between live parts and accessible parts.

**44.4 Rod pressure on direct plug-in units**

44.4.1 Any point on the product that is accessible to the rod described in 44.4.2 shall be subjected to a force of 20 pounds (89 N) for 1 minute.

44.4.2 The force specified in 44.4.1 is to be increased from 0 to 20 pounds (0 to 89 N) over a period of 5 seconds applied through the axis of a 1/2 inch (12.7 mm) diameter metal rod, having a flat contact end with the edge rounded to a radius of 1/32 inch (0.8 mm) to eliminate sharp edges. The force is then to be maintained at 20 pounds for 1 minute. The axis of the rod is to be perpendicular to the surface under test. During the test, the unit is to rest on a flat surface in any convenient position, and is to be energized. Shock current between the enclosure and earth, and between any parts of the enclosure between which such currents may exist, are to be monitored. The instrumentation used is to be that described in 24.5.

44.4.3 During the rod-pressure test specified in 44.4.1 and 44.4.2, the shock current shall not exceed 7.07 milliamperes peak when the voltage involved exceeds 42.4 volts peak. Following the rod pressure test, the unit is to be subjected to the Dielectric Voltage Withstand Tests, Section 32, and to an examination for evidence of the development of a risk of electric shock.

#### 44.5 Resistance to crushing on direct plug-in units

44.5.1 One sample of the unit shall withstand for 1 minute a steady crushing force of 75 pounds (334 N) applied at right angles to the mounting surfaces. The enclosure is to be tested between two parallel, flat, maple blocks, each not less than 1/2 inch (12.7 mm) thick. One block is to contain slots into which the blades of the device are to be fully inserted. The crushing force is to be applied gradually in a direction normal to the mounting surface.

#### 45 Bonding Conductor Test

45.1 With respect to 21.2.6, a bonding conductor that is smaller than any internal conductor supplying the part to be bonded is acceptable if, using a separate sample for each test, neither the bonding conductor nor the connection opens when

- a) Carrying a current of 40 amperes for 2 minutes, and
- b) A sample is subjected to a limited-short-circuit test using a test current of 200 amperes while connected in series with a nonrenewable fuse rated 20 amperes.

45.2 The test circuit described in 45.1(b) is to have a power factor of 0.9 - 1.0 and a closed-circuit-test voltage as specified in 23.1. The open-circuit voltage is to be 100 - 105 percent of the closed-circuit voltage.

#### MANUFACTURING AND PRODUCTION TESTS

##### 46 Dielectric Voltage Withstand Test

46.1 Each unit shall withstand without electrical breakdown, as a routine production line test, the application of a potential at a frequency within the range of 40 to 70 hertz

- a) Between the primary circuit, including connected components, and accessible dead metal parts that are likely to become energized,
- b) Between primary wiring and secondary wiring, including terminals, and
- c) For units having the spacings specified in Table 22.2, between the primary circuit and dead-metal parts including the core whether accessible or not.



46.2 The applied potential for the test shall be either

- a) 10<sup>00</sup> volts for 60 seconds, or
- b) 1200 volts for 1 second

46.3 The unit may be in a heated or unheated condition for the test

46.4 The test is to be conducted when the unit is complete and fully assembled. It is not intended that the unit be unwired, modified, or disassembled for the test.

*Exception No. 1 Parts such as snap covers or friction-fit knobs that would interfere with performance of the test need not be in place.*

*Exception No. 2 The test may be performed before final assembly of the unit if the test represents that for the completed unit.*

46.5 If a unit employs a solid-state component that may be damaged by the dielectric potential, the test may be conducted before the component is electrically connected provided that a random sampling of each day's production is tested at the potential specified in 46.2. The circuitry may be rearranged for the purpose of the test to reduce the likelihood of solid state component damage while retaining representative dielectric stress of the circuit.

46.6 The test equipment shall include a transformer having an essentially sinusoidal output, a means of indicating the test potential, an audible or visual indicator of electrical breakdown, and either a manually reset device to restore the equipment after electrical breakdown or an automatic reject feature of any unacceptable unit.

46.7 If the output of the test-equipment transformer is less than 500 volt-amperes, the equipment shall include a voltmeter in the output circuit to directly indicate the test potential.

46.8 If the output of the test equipment transformer is 500 volt-amperes or larger, the test potential may be indicated

- a) By a voltmeter in the primary circuit or in a tertiary-winding circuit,
- b) By a selector switch marked to indicate the test potential, or

No Text on This Page

c) In the case of equipment having a single test-potential output, by a marking in a readily visible location to indicate the test potential. When marking is used without an indicating voltmeter, the equipment shall include a positive means, such as an indicator lamp, to indicate that the manually reset switch has been reset following a dielectric breakdown.

46.9 Test equipment, other than that described in 46.6 - 46.8, may be used if found to accomplish the intended factory control.

46.10 During the test, the primary switch is to be in the on position, both sides of the primary circuit of the unit are to be connected together and to one terminal of the test equipment, and the second test equipment terminal is to be connected to accessible dead metal.

*Exception No. 1* A unit having resistive circuitry, high-impedance winding, and the like, not subject to excessive secondary-voltage build-up in case of electrical breakdown during the test may be tested:

- a) With a single-pole primary switch, if used, in the off position, or
- b) With only one side of the primary circuit connected to the test equipment when the primary switch is in the on position or when a primary switch is not used.

*Exception No. 2* The primary switch is not required to be in the on position if the testing means applies full test potential between primary wiring and dead-metal parts with the switch not in the on position.

#### 47 Grounding Continuity Test

47.1 Each unit that has a grounding pin connected to a dead metal part as described in 21.1.1 shall be tested, as a routine production-line test, to determine that electrical continuity exists between the grounding pin and accessible dead metal parts of the units that are likely to become energized.

*Exception* Parts described in the Exception to 21.1.1 need not be tested.

47.2 Only a single test need be conducted if the accessible metal selected is conductively connected by design to all other accessible metal.

47.3 Any acceptable indicating device - an ohmmeter, battery-and-buzzer combination, or the like - may be used to determine whether a unit complies with the grounding continuity requirement in 47.1.

#### RATING

##### 48 General

48.1 The electrical ratings of a unit shall include primary or input voltage or input voltage range, primary or input frequency expressed in hertz, Hz, cycles-per-second, cps, cycles/second, or c/s, output in amperes, volt-amperes, or watts for each output, and output voltage for each output in alternating or direct current.

*Exception* If a battery charger is marked for use with a specific battery pack, the output ratings need not be marked on the charger.

48.2 If a unit is marked with an input amperes, volt-amperes, or watts rating, the rating shall be at least 90 percent of the value which occurs under rated load conditions.

48.3 The output rating of each output shall not exceed 30 volts rms or 60 volts dc

48.4 The sum of the volt-ampere ratings of all outputs shall not be more than 100 volt-amperes

48.5 If a volt-ampere or wattage rating is accompanied by an ampere rating, it shall be congruous with the other ratings.

## MARKING

### 49 Details

#### 49.1 General

49.1.1 A unit shall be legibly and permanently marked, where readily visible, with

- a) The manufacturer's name, trade name, or trademark,
- b) The date or other dating period of manufacture not exceeding any three consecutive months,
- c) A distinctive catalog or model number, or the equivalent, and
- d) The electrical rating

*Exception* The date of manufacture may be abbreviated in an accepted conventional code, or in a code affirmed by the manufacturer

49.1.2 If a manufacturer produces or assembles a unit at more than one factory, each unit shall have a distinctive marking to identify it as the product of a particular factory

49.1.3 The repetition time cycle of a date code shall not be less than 20 years. The date code shall not require reference to the manufacturer's records to determine when the unit was manufactured

49.1.4 A unit shall be marked with one of the following terms, as applicable

- a) "Class 2 Battery Charger,"
- b) "Class 2 Transformer,"
- c) "Class 2 Power Supply," or
- d) "Class 2 Power Unit "

See 49.2.11 A power unit may additionally be marked for use with a specific end product or end product type if investigated for the intended application. See 1.4

*Exception* Other designations conveying the intent of the terms specified may be used

49.1.4 effective September 1, 1997

49.1.5 A unit shall not be marked "charger," or the equivalent, unless it employs a rectifying component.

49.1.6 The polarity of a direct-current output shall be plainly marked, unless the unit is provided with a polarized termination

49.1.7 A power unit not furnished with a detachable power supply cord as described in the Exceptions to 12.2.1 and 12.2.3 shall be marked adjacent to the appliance coupler to inform the user to see the instruction manual (see 50.3) for proper selection of the power supply cord.

*Exception* The marking may be in the form of a tag, nonpermanent label, or product insert that is provided on or packaged with the unit so that the marking is visible at the time of installation.

49.1.7 added May 25, 1995

49.1.8 In accordance with 12.2.4, a multiple voltage rated power unit that is provided with a permanently attached power supply cord and is intended for use by travelers shall be marked "See instruction manual for use in countries other than the U.S.A."

49.1.8 added May 25, 1995

## 49.2 Cautionary marking

49.2.1 A cautionary marking shall be prefixed by the word "CAUTION," "WARNING," or "DANGER" in letters not less than 1/8 inch (3.2 mm) high. The remaining letters shall not be less than 1/16 inch (1.6 mm) high.

49.2.2 A cautionary marking shall be located on

- a) A part that cannot be removed without impairing the operation of the unit, or
- b) A tag complying with the requirements in 49.2.3, 49.3.2, and 49.3.3

49.2.3 A cautionary marking may be provided on a permanent tag that is secured to the input or output cord of a unit. The tag shall be attached in such a way that it cannot be easily removed. The tag shall also be marked "Do not remove this tag," or the equivalent, in letters not less than 3/32 inch (2.4 mm) high.

49.2.4 A direct plug-in unit having a mounting tab for semipermanent mounting shall be marked - on the unit, a marking tag, or an instruction sheet packed with the unit - with the word "CAUTION" and the following mounting instructions or the equivalent:

- a) "To reduce the risk of electric shock - Disconnect power to the receptacle before installing or removing the unit. When removing receptacle cover screw, cover may fall across plug pins or receptacle may become displaced."
- b) "Use only with duplex receptacle having center screw," and
- c) "Secure unit in place by receptacle cover screw."

49.2.5 A direct plug-in unit intended to be semipermanently mounted that exceeds the surface temperature limits specified in Table 31.1 for either metallic or nonmetallic shall be legibly marked where readily visible after installation with the word "CAUTION" and the following or the equivalent: "Hot surfaces - To reduce the risk of burns - Do not touch."

49.2.6 A unit shall be marked with the word "CAUTION" and "Risk of electric shock" and the following or the equivalent: "Dry location use only" or "Do not expose to liquid, vapor, or rain."

\*Revised 49.2.6 effective August 2, 1999\*

49.2.7 A direct plug-in unit that resembles an attachment plug of a power supply cord shall be plainly marked with the word "CAUTION" and the following or the equivalent: "Do not replace this plug assembly as a risk of fire or electric shock may result."

49.2.8 A unit which employs fusing in both supply conductors shall be marked, where readily visible during servicing, "CAUTION" and the following or equivalent: "Risk of electric shock. Both sides of line are fused. Test before touching."

*Exception: A unit not likely to be serviced need not employ this marking.*

49.2.9 A unit intended to charge batteries shall be marked, where readily visible to the user, with the word "CAUTION" and the following or the equivalent: "Charge only \_\_\_ type rechargeable batteries. Other types of batteries may burst causing injury to persons and damage."

*Exception: A reference to a specific rechargeable battery or battery pack for which the charger is intended may be used in lieu of marking the type of batteries to be charged.*

49.2.10 With reference to 26.3 and 26.2.3, a multi-output unit shall be marked, where readily visible after installation, with the word "WARNING" and the following or equivalent: "To reduce the risk of fire or electric shock, do not interconnect output terminations."

49.2.11 A unit employing output field-wiring terminals shall be marked "CLASS 2 NOT WET, CLASS 3 WET" or the equivalent if the open circuit output voltage exceeds

- a) 21.2 volts peak,
- b) 30 volts for continuous direct current, or
- c) 12.4 volts for DC interrupted at a rate of 10 to 200 Hz

*Exception: If a unit having an output specified by (a) or (b) is marked with the maximum obtainable output peak voltage, it need not comply with the requirement.*

49.2.12 A unit, as described in 13.3.4, shall be marked with the word "CAUTION" and the following or the equivalent: "To reduce the risk of fire, use only Type SPT-2 or heavier cord, minimum No. \_\_\_ AWG copper." The minimum acceptable size is No. 18 AWG (0.82 mm<sup>2</sup>). The marking is to be located adjacent to the terminals or connectors or on a tag attached to the unit.

### 49.3 Application

49.3.1 Unless specifically excepted, marking required by this standard shall be permanent. A permanent marking shall be molded, die-stamped, paint-stenciled, stamped or etched metal that is permanently secured, or indelibly stamped on a pressure-sensitive label secured by adhesive that complies with the Standard for Marking and Labeling Systems, UL 969. Ordinary usage, handling, storage, and the like of the unit are to be considered in determining whether a marking is permanent.

49.3.2 The tag mentioned in 49.2.3 shall be made of durable material that provides mechanical strength, such as cloth, plastic, or the equivalent, and shall be large enough to accommodate the required marking in a size that is legible - also see 49.3.3. The tag shall be either

- a) A flat tag having a hole large enough to accommodate the cord, but neither so large nor so positioned that it can easily be torn from the cord. To prevent removal or tearing, the tag is not to have a slit from the cord hole, or
- b) A flag-type tag with an adhesive back wrapped tightly once around and adhering to the cord. The ends of the tag are to adhere to each other and are to project as a flag.

49.5.3 The markings on a tag are to be printed in contrasting colors on a background other than blue or yellow, and are to be located on the projecting flag of a flag-type tag.

## INSTRUCTIONS

### 50 Instruction Manual

50.1 Multiple-voltage cord-connected equipment shall be provided with instructions to

- a) Indicate the type of detachable supply cord and attachment plug that is to be used for connection to the alternate voltage, and
- b) Inform the operator to set the voltage selector switch to the voltage to which the product will be connected. See 12.2.3.

\*50.1 revised May 25, 1995\*

50.2 Multiple voltage equipment intended for use with a detachable power supply cord shall be provided with instructions to indicate the type of detachable power supply cord that is to be used for connection to the alternate voltage in accordance with 12.2.3.

\*60.2 added May 25, 1995\*

50.3 In accordance with the Exceptions to 12.2.1 and 12.2.3, the instructions for a power unit intended for use with a detachable power supply cord which is not provided with the unit shall contain complete details concerning proper selection of the power supply cord. The instructions shall specify selection of a cord complying with the requirements in 12.2.1.

*Exception* For a power unit intended for use in a foreign country, the instructions shall specify the appropriate cord to be used (see Exception No. 4 to 12.2.1).

\*50.3 added May 25, 1995\*

50.4 With reference to 12.2.4, the instructions for a multiple voltage rated unit shall include (a) — (c) or the equivalent, as appropriate. The items shall be preceded by "IMPORTANT SAFETY INSTRUCTIONS — SAVE THESE INSTRUCTIONS" and "DANGER — TO REDUCE THE RISK OF FIRE OR ELECTRIC SHOCK, CAREFULLY FOLLOW THESE INSTRUCTIONS" in letters of 1/8 inch (3.18 mm) high or in a readily visible contrasting text.

- a) "Be sure voltage selector is in correct voltage position before plugging in." The instructions shall also specify the procedures to follow for changing the voltage selector.
- b) "For use in the U.S.A., the voltage selector switch must be placed in the 120 volt position. For use in countries other than the U.S.A., the voltage selector may need to be placed in other than the 120 volt position. Confirm the voltage available at each country location before using the product."
- c) "For connection to a supply not in the U.S.A., use an attachment plug adapter of the proper configuration for the power outlet."

\*50.4 added May 25, 1995\*

No Text on This Page



---

**APPENDIX A****Standards for Components**

Standards under which components of the products covered by this standard are evaluated include the following

Title of Standard - UL Standard Designation

---

Attachment Plugs and Receptacles - UL 498  
Electric Motors - UL 1004  
Flexible Cord and Fixture Wire - UL 62  
Fuseholders - UL 512  
Insulating Materials - General, Systems of - UL 1446  
Marking and Labeling Systems - UL 969  
Plastic Materials for Parts in Devices and Appliances, Tests for Flammability of - UL 94  
Polymeric Materials - Long Term Property Evaluations - UL 746B  
Polymeric Materials - Use in Electrical Equipment Evaluations - UL 746C  
Printed Wiring Boards - UL 796  
Switches, Special Use - UL 1054  
Temperature-Indicating and -Regulating Equipment - UL 873  
Thermal Cutoffs for Use in Electrical Appliances and Components - UL 1020  
Wire Connectors and Soldering Lugs for Use with Copper Conductors - UL 486A  
Wires and Cables, Rubber-Insulated - UL 44  
Wires and Cables, Thermoplastic-Insulated - UL 83

---

No Text on This Page

September 25, 1998 - UL 1310

sr1

---

**Superseded requirements for**

**the Standard for**

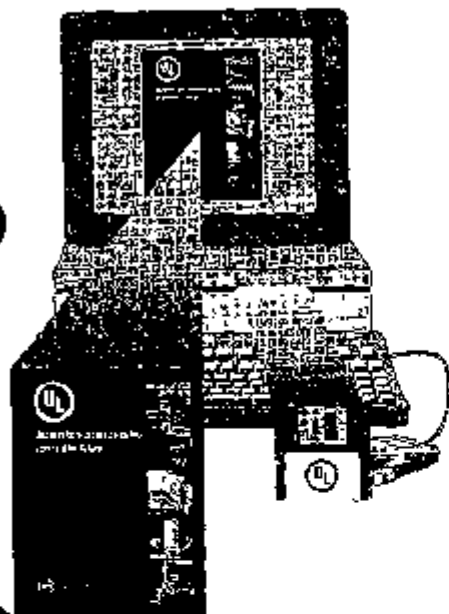
**Class 2 Power Units**

**UL 1310, Fourth Edition**

The requirements shown are the current requirements that have been superseded by requirements in revisions issued for this Standard. To retain the current requirements, do not discard the following requirements until the future effective dates are reached.

49.2.6 A unit shall be marked with the word "CAUTION" and the following or the equivalent "Indoor use only" or "Do not expose to rain."

No Text on This Page



### Standards-on-Diskette Subscriptions

Play it Safe! Be able to access the most current UL Standards for Safety on your PC. With Standards-on-Diskette, data including tables, drawings and formulas can be referenced quickly and easily. Current requirements can be reviewed and researched in seconds, saving time by eliminating manual search methods. When you order UL's Standards-on-Diskette Subscription Service, you will be provided with a new diskette with updated requirements each time the Standard is revised or a proposal bulletin is issued. Contact Global Engineering Documents at (303) 397-7956, or if calling from within the U.S. or Canada at (800) 854-7179 for more information or to order.



### Catalog of Standards for Safety

Keep up to date on each one of more than 750 published UL Standards for Safety by requesting a copy of the catalog. Proposed Standards, Outlines of Investigation, and Standards-on-Diskette, as well as additional information on UL publications and educational seminars, are also included. Contact Global Engineering Documents at (303) 397-7956, or if calling from within the U.S. or Canada at (800) 854-7179 for more information or to order.



### UL StandardsNet

... the Internet Website for information on UL Standards activities.

### UL StandardsNet

... provides complimentary access to UL's current Catalog of Standards for Safety, UL's current Product Index, and general information on ordering UL Standards and Standards-related products and services.

### UL StandardsNet

... includes services —

- that provide up-to-date information pertaining to UL Standards activities, such as General Standards Information, information about New Editions, Revisions Proposed Standards, Bulletins, Outlines of Investigation, Service Announcements, and Future Effective Dates, a List of DoD adopted standards and ANSI approved standards, information about UL/CSA and UL/IEC harmonized standards, the Scope of each UL Standard and Outline of Investigation, Meeting Announcements, IAC Chairman List, and UL Mark and C-UL Information.
- that provide for on-line viewing of UL Standards or downloading of UL Standards.

For information or to order, contact (847) 272-5800, ext. 43331.



## Underwriters Laboratories Inc.®

333 Pfingsten Road  
Northbrook, Illinois 60062-2096  
(847) 272-8800

1285 Walt Whitman Road  
Melville, New York 11747-3081  
(516) 271-6200

1655 Scott Boulevard  
Santa Clara, California 95050-4169  
(408) 985-2400

12 Laboratory Drive  
Research Triangle Park, North Carolina 27709-3995  
(919) 549-1400

2500 N.W. Lake Road  
Camas, Washington 98307-9526  
(360) 817-5500