

Conducted Emission Measurement

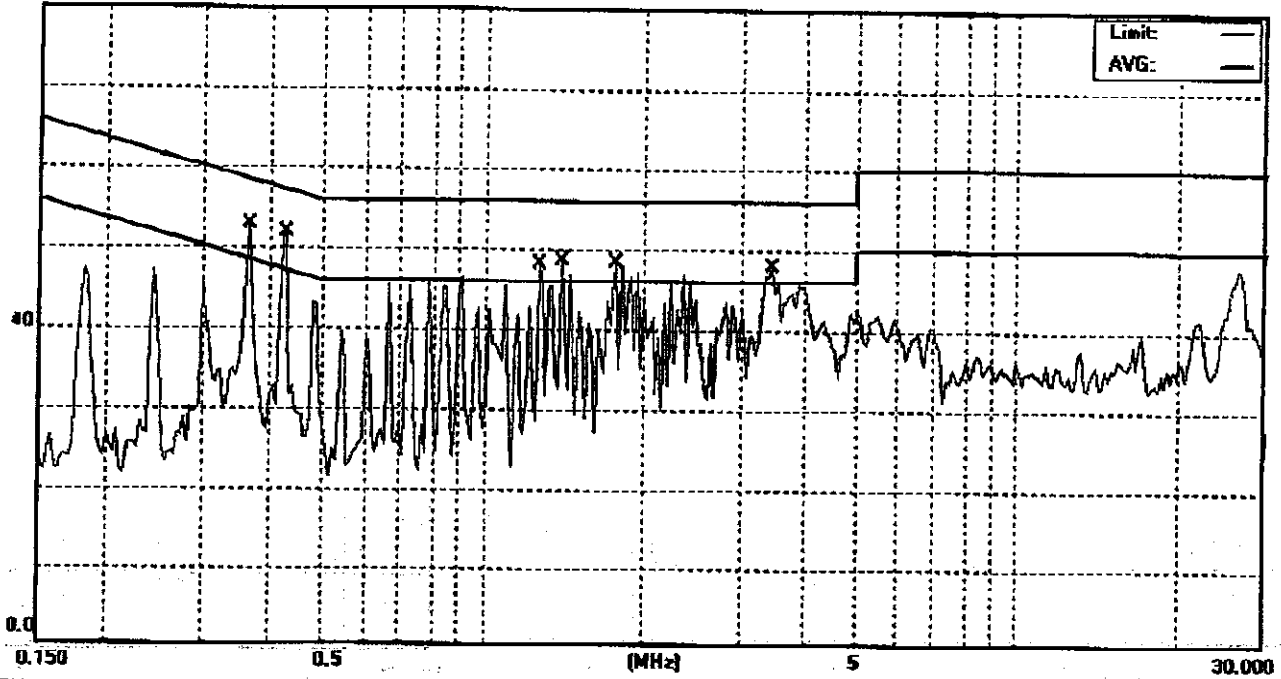
File :0407081

Data :#26

Date: 2005/1/4

Time: 下午 04:27:34

80.0 dBuV



Site: GESTEK EMI TEST Site.(B5)

Phase: N

Temperature: 25 °C

Limit: (CE)EN55022 class B_QP

Power: AC230V/50HZ

Humidity: 63. %

EUT: ADAPTOR

Air Pressure: 998 hpa

M/N: TCFL02

Note: FULL LOAD MODE:1 FULL 500ma

No.	Mk.	Freq. MHz	Reading Level dBuV	Factor dB	Measure- ment dBuV	Limit dBuV	Over dB	Detector	Comment
1		0.3649	42.30	10.11	52.41	58.62	-6.21	QP	
2		0.3649	37.97	10.11	48.08	48.62	-0.54	AVG	
3		0.4264	41.52	10.14	51.66	57.32	-5.66	QP	
4	*	0.4264	37.94	10.14	48.08	47.32	0.76	AVG	
5		1.2777	37.37	10.10	47.47	56.00	-8.53	QP	
6		1.2777	33.64	10.10	43.74	46.00	-2.26	AVG	
7		1.3993	37.84	10.10	47.94	56.00	-8.06	QP	
8		1.3993	34.55	10.10	44.65	46.00	-1.35	AVG	
9		1.7662	37.55	10.11	47.66	56.00	-8.34	QP	
10		1.7662	32.46	10.11	42.57	46.00	-3.43	AVG	
11		3.4680	35.47	10.21	45.68	56.00	-10.32	QP	
12		3.4680	30.37	10.21	40.58	46.00	-5.42	AVG	

*:Maximum data x:Over limit !:over margin

●Reference Only

Receiver: ESCS30

Spectrum Analyzer:

L.I.S.N: MMB-2/16Z /FOLF HEINE

Test Result: Fail

Pulse limiter: R & S/ESH322

Engineer Signature: Paul

File :0407081\Data :#26

Page: 1

Conducted Emission Measurement

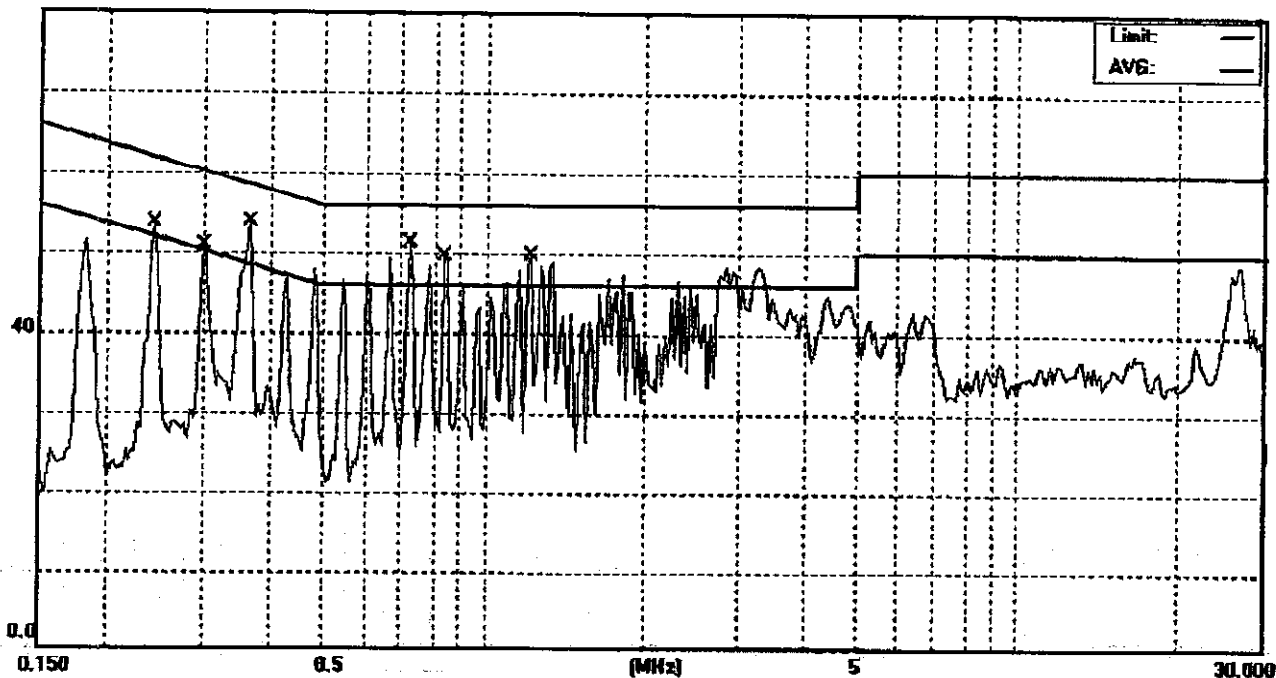
File :0407081

Data :#27

Date: 2005/1/4

Time: 下午 04:30:49

80.0 dBuV



Site GESTEK EMI TEST Site (B5)

Phase: L1

Temperature: 25 °C

Limit: (CE)EN55022 class B_QP

Power: AC230V/50HZ

Humidity: 63 %

EUT: ADAPTOR

Air Pressure: 998 hpa

M/N: TCFL02

Note: FULL LOAD MODE:1 FULL 500ma

No.	Mk.	Freq. MHz	Reading Level dBuV	Factor dB	Measure- ment dBuV	Limit dBuV	Over dB	Detector	Comment
1		0.2428	43.15	10.07	53.22	62.00	-8.78	QP	
2		0.2428	41.20	10.07	51.27	52.00	-0.73	AVG	
3		0.3051	40.32	10.09	50.41	60.10	-9.69	QP	
4		0.3051	37.42	10.09	47.51	50.10	-2.59	AVG	
5		0.3641	43.31	10.11	53.42	58.63	-5.21	QP	
6	X	0.3641	40.30	10.11	50.41	48.63	1.78	AVG	
7		0.7288	41.17	10.13	51.30	56.00	-4.70	QP	
8	*	0.7288	38.07	10.13	48.20	46.00	2.20	AVG	
9		0.8506	39.15	10.11	49.26	56.00	-6.74	QP	
10	X	0.8506	36.00	10.11	46.11	46.00	0.11	AVG	
11		1.2145	39.19	10.10	49.29	56.00	-6.71	QP	
12		1.2145	35.53	10.10	45.63	46.00	-0.37	AVG	

*:Maximum data x:Over limit !:over margin

•Reference Only

Receiver: ESCS30

Spectrum Analyzer:

L.I.S.N: MMB-2/16Z /OLF HEINE

Test Result: Fail

Pulse limiter: R & S/ESH3Z2

Engineer Signature: Paul

File :0407081\Data :#27

Page: 1

Conducted Emission Measurement

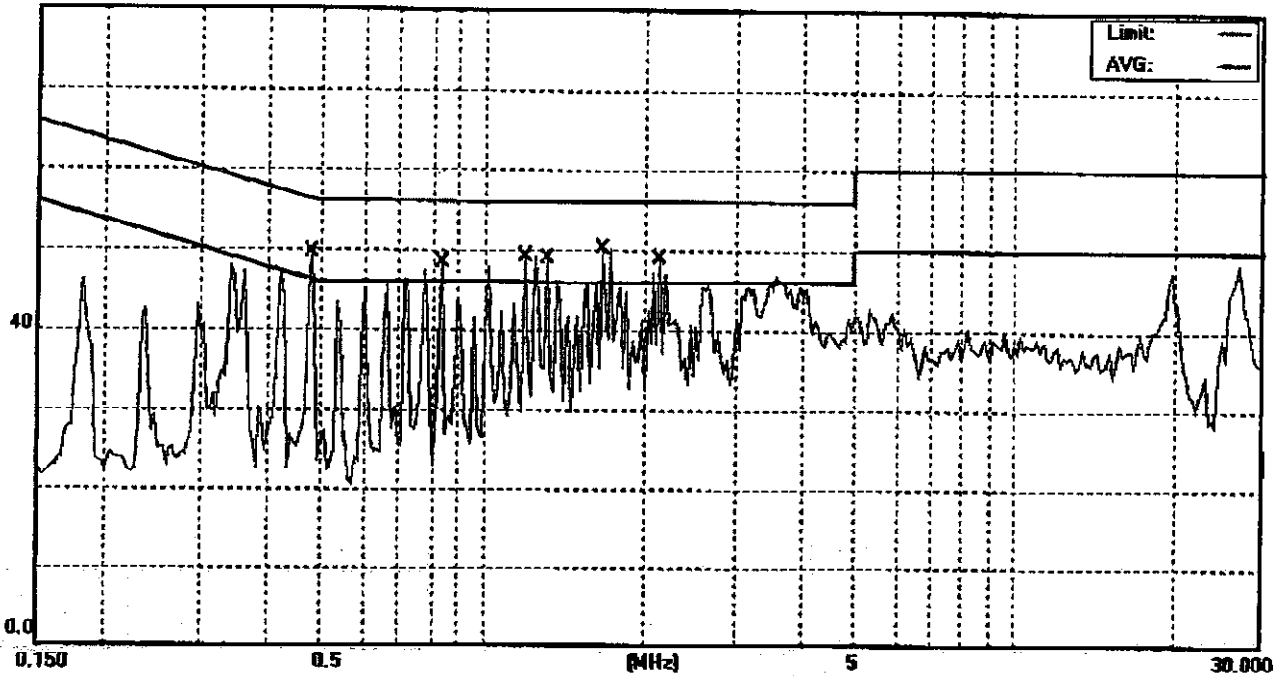
File :0407081

Data #18

Date: 2005/1/4

Time: 下午 03:26:57

88.9 dBuV



Site GESTEK EMI TEST Site (B5)

Phase: N

Temperature: 25 °C

Limit: (CE)EN55022 class B_QP

Power: AC230V/50HZ

Humidity: 63 %

EUT: ADAPTOR

Air Pressure: 998 hpa

M/N: TCFL02

Note: FULL LOAD MODE1

No.	Mk.	Freq. MHz	Reading Level dBuV	Factor dB	Measure- ment dBuV	Limit dBuV	Over dB	Detector	Comment
1		0.4844	38.73	10.15	48.88	56.26	-7.38	QP	
2	*	0.4844	35.96	10.15	46.11	46.26	-0.15	AVG	
3		0.8450	37.74	10.11	47.85	56.00	-8.15	QP	
4		0.8450	35.19	10.11	45.30	46.00	-0.70	AVG	
5		1.2059	38.75	10.10	48.85	56.00	-7.15	QP	
6		1.2059	35.11	10.10	45.21	46.00	-0.79	AVG	
7		1.3269	38.10	10.10	48.20	56.00	-7.80	QP	
8		1.3269	34.78	10.10	44.88	46.00	-1.12	AVG	
9		1.6888	39.44	10.11	49.55	56.00	-6.45	QP	
10		1.6888	35.54	10.11	45.65	46.00	-0.35	AVG	
11		2.1699	37.71	10.13	47.84	56.00	-8.16	QP	
12		2.1699	34.06	10.13	44.19	46.00	-1.81	AVG	

*:Maximum data x:Over limit !:over margin

●Reference Only

Receiver: ESCS30

Spectrum Analyzer:

L.I.S.N: MMB-2/16Z /OLF HEINE

Test Result: Pass

Pulse limiter: R & S/ESH322

Engineer Signature: Paul

File :0407081\Data #18

Page: 1

Conducted Emission Measurement

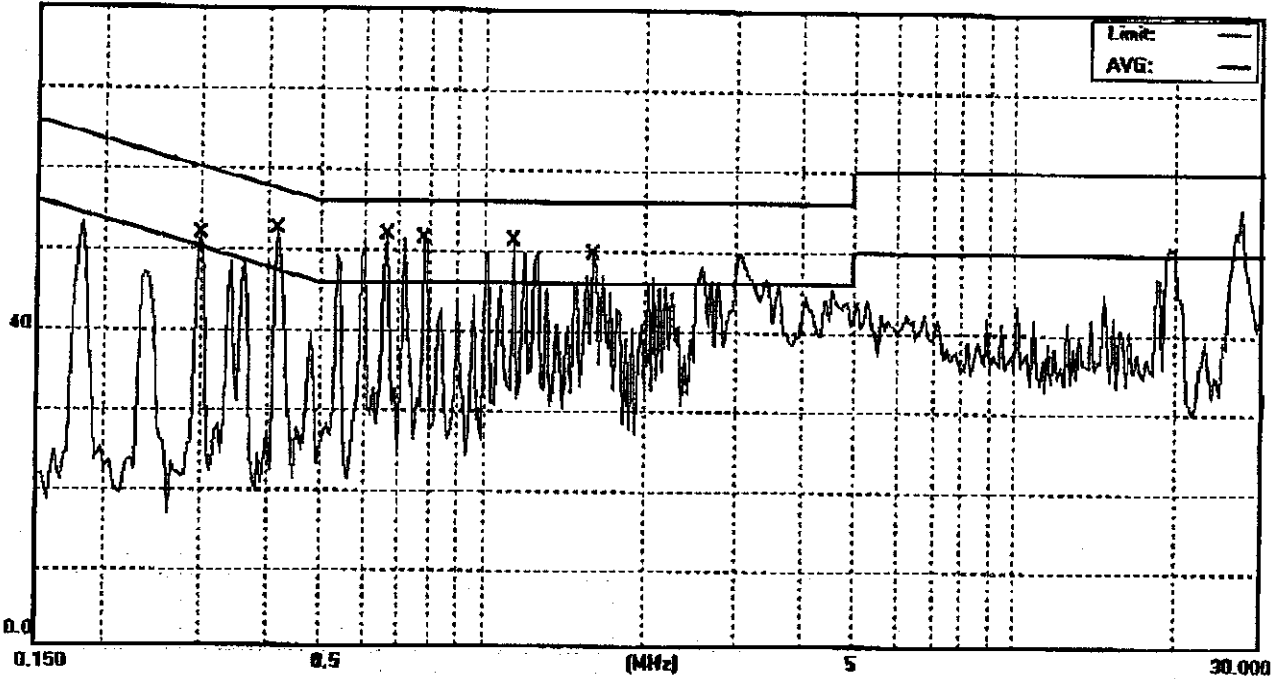
File :0407081

Data :#19

Date: 2005/1/4

Time: 下午 03:31:07

99.0 dBuV



Site GESTEK EMI TEST Site (B5)
Limit: (CE)EN55022 class B_QP
EUT: ADAPTOR
M/N: TCFL02
Note: FULL LOAD MODE1

Phase: L1
Power: AC230V/50HZ

Temperature: 25 °C
Humidity: 63 %
Air Pressure: 998 hpa

No.	Mk.	Freq. MHz	Reading Level dBuV	Factor dB	Measure- ment dBuV	Limit dBuV	Over dB	Detector	Comment
1		0.3003	41.26	10.09	51.35	60.23	-8.88	QP	
2		0.3003	38.64	10.09	48.73	50.23	-1.50	AVG	
3		0.4222	42.47	10.13	52.60	57.40	-4.80	QP	
4	*	0.4222	39.71	10.13	49.84	47.40	2.44	AVG	
5		0.6596	41.43	10.14	51.57	56.00	-4.43	QP	
6	X	0.6596	38.22	10.14	48.36	46.00	2.36	AVG	
7		0.7817	40.99	10.12	51.11	56.00	-4.89	QP	
8	X	0.7817	37.78	10.12	47.90	46.00	1.90	AVG	
9		1.1424	40.60	10.09	50.69	56.00	-5.31	QP	
10	X	1.1424	36.92	10.09	47.01	46.00	1.01	AVG	
11		1.6278	38.39	10.11	48.50	56.00	-7.50	QP	
12		1.6278	33.48	10.11	43.59	46.00	-2.41	AVG	

*:Maximum data x:Over limit l:over margin

•Reference Only

Receiver: ESCS30

Spectrum Analyzer:

L.I.S.N: MMB-2/18Z /FOLF HEINE

Test Result: Fail

Pulse limiter: R & S/ESH322

Engineer Signature: Paul

File :0407081\Data :#19

Page: 1

Conducted Emission Measurement

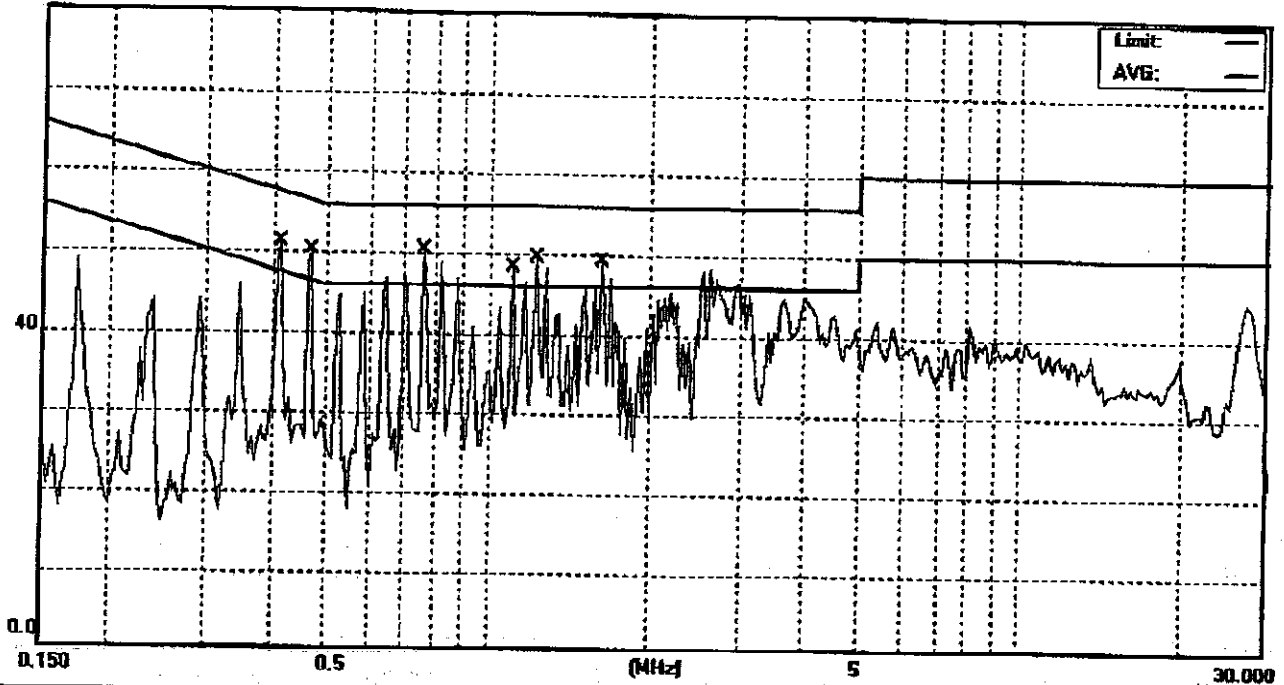
File :0407081

Data :#21

Date: 2005/1/4

Time: 下午 03:47:14

80.0 dBuV



Site GESTEK EMI TEST Site (B5)

Phase: N

Temperature: 25 °C

Limit: (CE)EN55022 class B_QP

Power: AC230V/50HZ

Humidity: 63 %

EUT: ADAPTOR

Air Pressure: 998 hpa

M/N: TCFL02

Note: FULL LOAD MODE2

No.	Mk.	Freq. MHz	Reading Level dBuV	Factor dB	Measure- ment dBuV	Limit dBuV	Over dB	Detector	Comment
1		0.4109	40.62	10.13	50.75	57.63	-6.88	QP	
2		0.4109	36.67	10.13	46.80	47.63	-0.83	AVG	
3		0.4711	39.55	10.15	49.70	56.49	-6.79	QP	
4	*	0.4711	37.03	10.15	47.18	46.49	0.69	AVG	
5		0.7637	40.00	10.12	50.12	56.00	-5.88	QP	
6	X	0.7637	36.55	10.12	46.67	46.00	0.67	AVG	
7		1.1150	38.00	10.09	48.09	56.00	-7.91	QP	
8		1.1150	34.14	10.09	44.23	46.00	-1.77	AVG	
9		1.2364	38.71	10.10	48.81	56.00	-7.19	QP	
10		1.2364	34.51	10.10	44.61	46.00	-1.39	AVG	
11		1.6464	37.96	10.11	48.07	56.00	-7.93	QP	
12		1.6464	34.34	10.11	44.45	46.00	-1.55	AVG	

*:Maximum data x:Over limit l:over margin

●Reference Only

Receiver: ESCS30

Spectrum Analyzer:

L.I.S.N: MMB-2/16Z /OLF HEINE

Test Result: Fail

Pulse limiter: R & S/ESH322

Engineer Signature: Paul

File :0407081\Data :#21

Page: 1

Conducted Emission Measurement

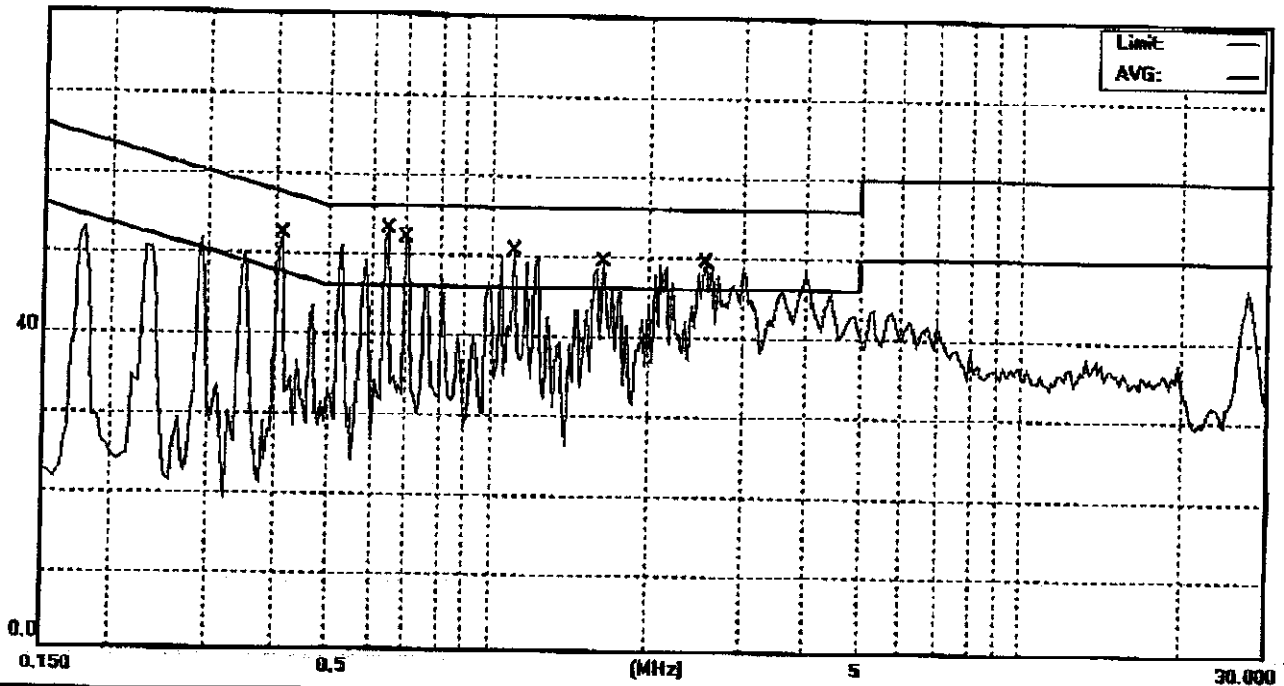
File :0407081

Data :#20

Date: 2005/1/4

Time: 下午 03:37:23

80.0 dBuV



Site GESTEK EMI TEST Site (B5)

Phase: L1

Temperature: 25 °C

Limit: (CE)EN55022 class B_QP

Power: AC230V/50HZ

Humidity: 63 %

EUT: ADAPTOR

Air Pressure: 998 hpa

M/N: TCFL02

Note: FULL LOAD MODE2

No.	Mk.	Freq. MHz	Reading Level dBuV	Factor dB	Measure- ment dBuV	Limit dBuV	Over dB	Detector	Comment
1		0.4102	41.54	10.13	51.67	57.64	-5.97	QP	
2	X	0.4102	38.06	10.13	48.19	47.64	0.55	AVG	
3		0.8458	42.52	10.14	52.66	56.00	-3.34	QP	
4	*	0.6458	39.54	10.14	49.68	46.00	3.68	AVG	
5		0.7038	41.35	10.13	51.48	56.00	-4.52	QP	
6	X	0.7038	37.90	10.13	48.03	46.00	2.03	AVG	
7		1.1152	39.84	10.09	49.93	56.00	-6.07	QP	
8	X	1.1152	35.95	10.09	46.04	46.00	0.04	AVG	
9		1.6462	38.47	10.11	48.58	56.00	-7.42	QP	
10		1.6462	34.99	10.11	45.10	46.00	-0.90	AVG	
11		2.5298	38.22	10.16	48.38	56.00	-7.62	QP	
12		2.5298	32.82	10.16	42.98	46.00	-3.02	AVG	

*:Maximum data x:Over limit !:over margin

•Reference Only

Receiver: ESCS30

Spectrum Analyzer:

L.I.S.N: MMB-2/16Z /OLF HEINE

Test Result: Fail

Pulse limiter: R & S/ESH32Z

Engineer Signature: Paul

File :0407081\Data :#20

Page: 1

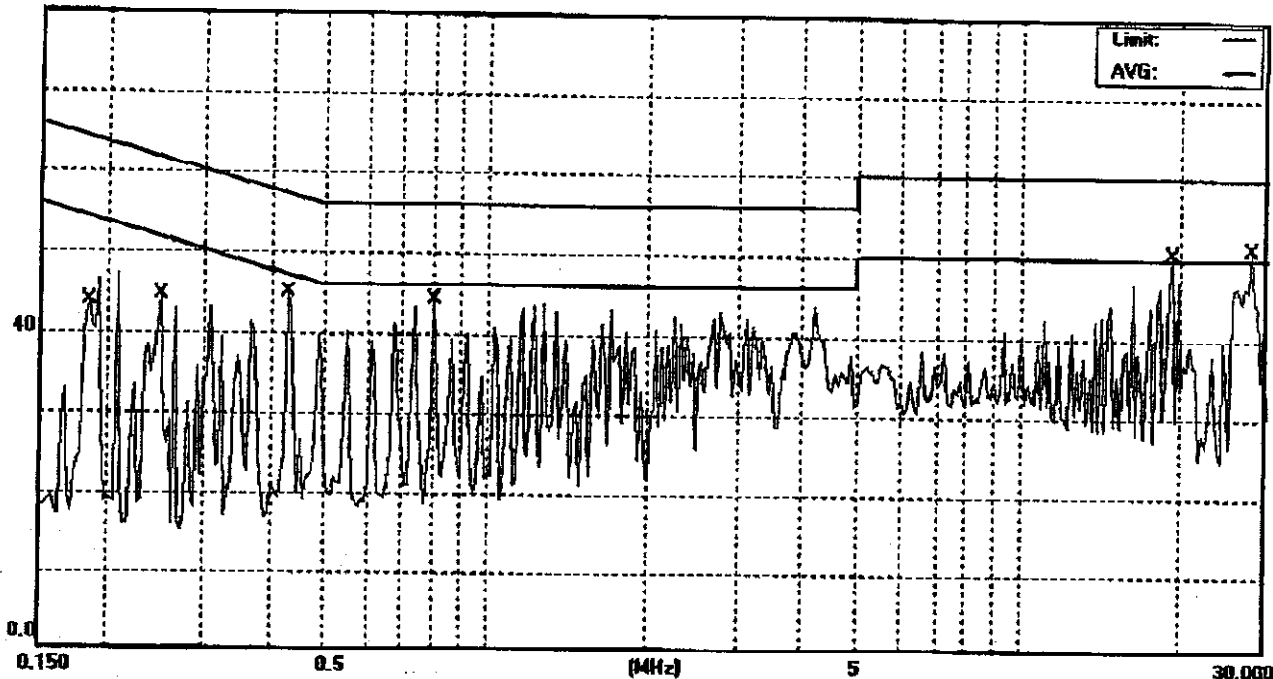
Conducted Emission Measurement

File :0407081
80.0 dBuV

Data :#22

Date: 2005/1/4

Time: 下午 03:56:12



Site GESTEK EMI TEST Site (B5)

Phase: N

Temperature: 25 °C

Limit: (CE)EN55022 class B_QP

Power: AC230V/50HZ

Humidity: 63 %

EUT: ADAPTOR

Air Pressure: 998 hpa

M/N: TCFL02

Note: FULL LOAD MODE3

No.	Mk.	Freq. MHz	Reading Level dBuV	Factor dB	Measure- ment dBuV	Limit dBuV	Over dB	Detector	Comment
1		0.1849	36.71	10.05	46.76	64.26	-17.50	QP	
2		0.1849	31.19	10.05	41.24	54.26	-13.02	AVG	
3		0.2482	34.85	10.07	44.92	61.82	-16.90	QP	
4		0.2482	29.06	10.07	39.13	51.82	-12.69	AVG	
5		0.4315	34.87	10.14	45.01	57.22	-12.21	QP	
6	*	0.4315	32.40	10.14	42.54	47.22	-4.68	AVG	
7		0.8009	34.05	10.12	44.17	56.00	-11.83	QP	
8		0.8009	30.38	10.12	40.50	46.00	-5.50	AVG	
9		19.4231	26.89	10.62	37.51	50.00	-12.49	AVG	
10		19.4504	33.68	10.62	44.30	60.00	-15.70	QP	
11		27.3209	32.31	10.96	43.27	60.00	-16.73	QP	
12		27.3534	29.60	10.96	40.56	50.00	-9.44	AVG	

*:Maximum data x:Over limit !:over margin

●Reference Only

Receiver: ESCS30

Spectrum Analyzer:

L.I.S.N: MMB-2/16Z /FOLF HEINE

Test Result: Pass

Pulse limiter: R & S/ESH3Z2

Engineer Signature: Paul

File :0407081\Data :#22

Page: 1

Conducted Emission Measurement

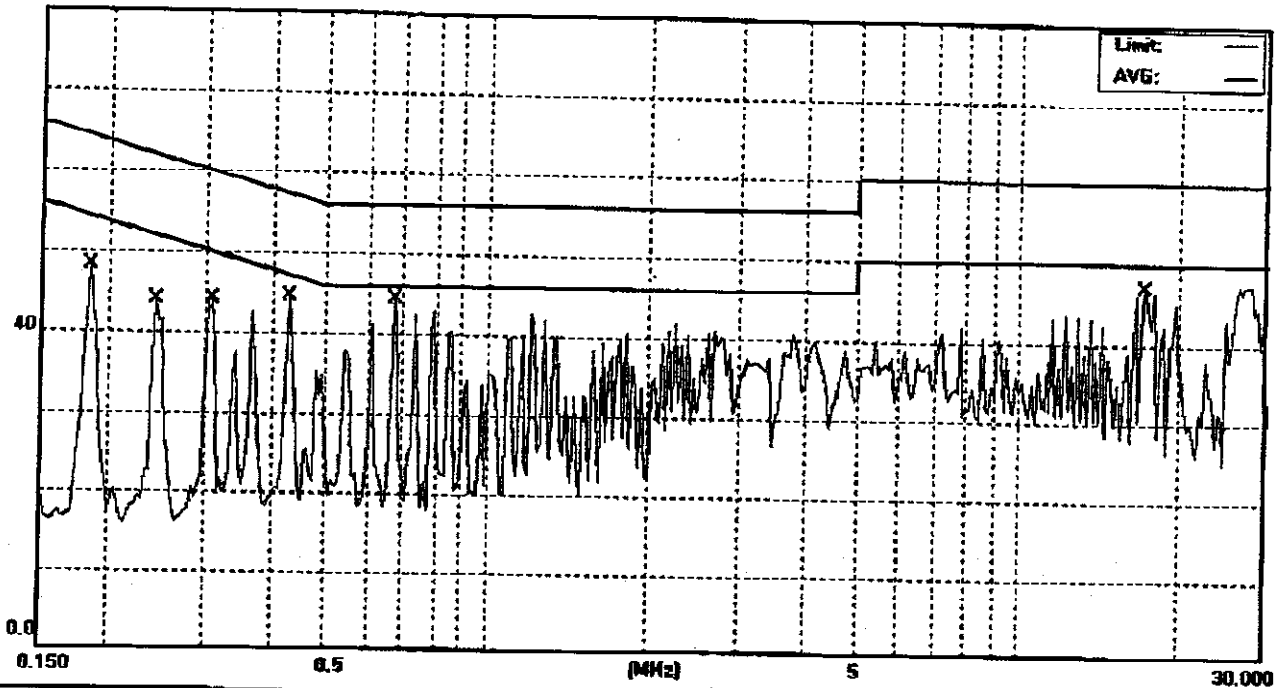
File :0407081

Data :#23

Date: 2005/1/4

Time: 下午 04:01:08

80.0 dBuV



Site GESTEK EMI TEST Site (B5)
Limit: (CE)EN55022 class B_QP
EUT: ADAPTOR
M/N: TCFL02
Note: FULL LOAD MODE3

Phase: L1
Power: AC230V/50HZ

Temperature: 25 °C
Humidity: 63 %
Air Pressure: 998 hpa

No.	Mk.	Freq. MHz	Reading Level dBuV	Factor dB	Measure- ment dBuV	Limit dBuV	Over dB	Detector	Comment
1		0.1867	35.75	10.05	45.80	64.18	-18.38	QP	
2		0.1867	33.22	10.05	43.27	54.18	-10.91	AVG	
3		0.2469	36.43	10.07	46.50	61.86	-15.36	QP	
4		0.2469	33.71	10.07	43.78	51.86	-8.08	AVG	
5		0.3084	34.92	10.10	45.02	60.01	-14.99	QP	
6		0.3084	32.36	10.10	42.46	50.01	-7.55	AVG	
7		0.4318	35.97	10.14	46.11	57.22	-11.11	QP	
8	*	0.4318	32.71	10.14	42.85	47.22	-4.37	AVG	
9		0.6762	33.76	10.14	43.90	56.00	-12.10	QP	
10		0.6762	30.03	10.14	40.17	46.00	-5.83	AVG	
11		17.3047	31.28	10.61	41.89	60.00	-18.11	QP	
12		17.3047	28.39	10.61	39.00	50.00	-11.00	AVG	

*:Maximum data x:Over limit !:over margin

●Reference Only

Receiver: ESCS30

Spectrum Analyzer:

L.I.S.N: MMB-2/16Z /OLF HEINE

Test Result: Pass

Pulse limiter: R & S/ESH322

Engineer Signature: Paul

File :0407081\Data :#23

Page: 1

Conducted Emission Measurement

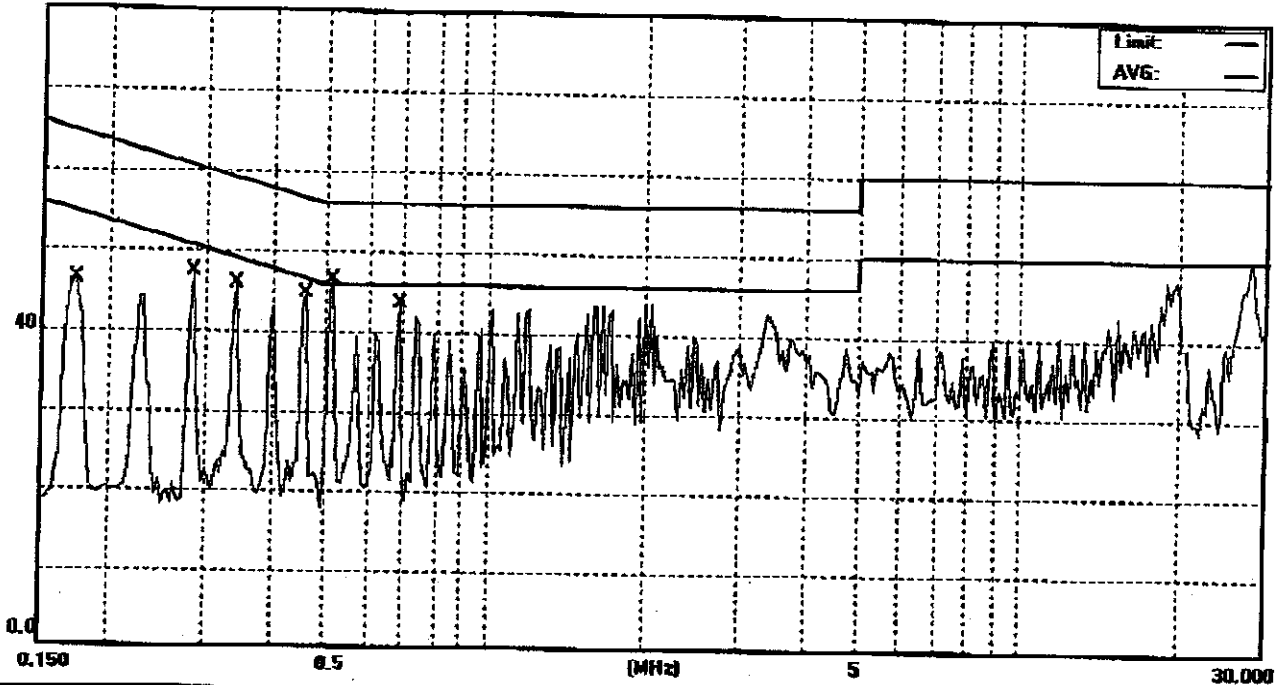
File :0407081

Data :#24

Date: 2005/1/4

Time: 下午 04:09:11

80.0 dBuV



Site GESTEK EMI TEST Site (B5)

Phase: L1

Temperature: 25 °C

Limit: (CE)EN55022 class B_QP

Power: AC230V/50HZ

Humidity: 63 %

EUT: ADAPTOR

Air Pressure: 998 hpa

M/N: TCFL02

Note: FULL LOAD MODE4

No.	Mk.	Freq. MHz	Reading Level dBuV	Factor dB	Measure- ment dBuV	Limit dBuV	Over dB	Detector	Comment
1		0.1700	39.97	10.05	50.02	64.96	-14.94	QP	
2		0.1700	36.61	10.05	46.66	54.96	-8.30	AVG	
3		0.2846	35.38	10.09	45.47	60.68	-15.21	QP	
4		0.2846	28.78	10.09	38.87	50.68	-11.81	AVG	
5		0.3388	36.50	10.10	46.60	59.23	-12.63	QP	
6		0.3388	33.82	10.10	43.92	49.23	-5.31	AVG	
7		0.4572	34.36	10.15	44.51	56.74	-12.23	QP	
8	*	0.4572	32.39	10.15	42.54	46.74	-4.20	AVG	
9		0.5148	34.97	10.16	45.13	56.00	-10.87	QP	
10		0.5148	29.18	10.16	39.34	46.00	-6.66	AVG	
11		0.6864	31.81	10.13	41.94	56.00	-14.06	QP	
12		0.6864	26.76	10.13	36.89	46.00	-9.11	AVG	

*:Maximum data x:Over limit !:over margin

●Reference Only

Receiver: ESCS30

Spectrum Analyzer:

L.I.S.N: MMB-2/16Z /FOLF HEINE

Test Result: Pass

Pulse limiter: R & S/ESH322

Engineer Signature: Paul

File :0407081\Data :#24

Page: 1

Conducted Emission Measurement

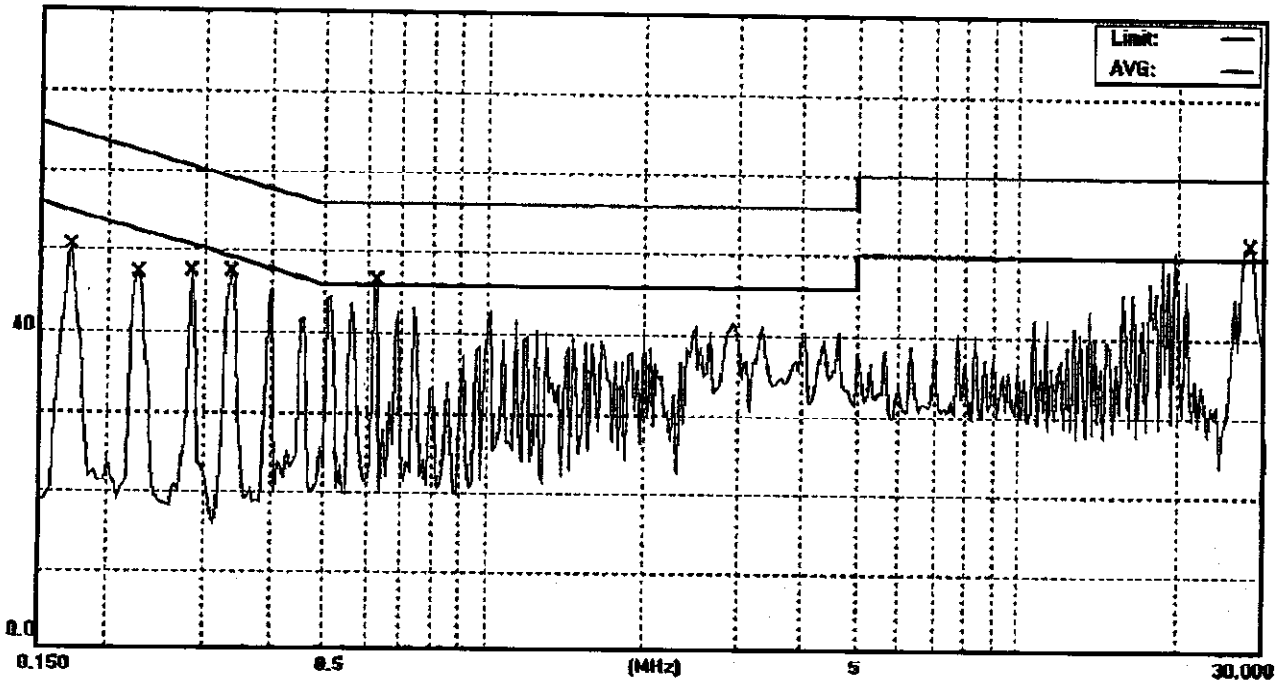
File :0407081

Data :#25

Date: 2005/1/4

Time: 下午 04:16:47

80.0 dBuV



Site GESTEK EMI TEST Site (B5)

Phase: N

Temperature: 25 °C

Limit: (CE)EN55022 class B_QP

Power: AC230V/50HZ

Humidity: 63 %

EUT: ADAPTOR

Air Pressure: 998 hpa

M/N: TCFL02

Note: FULL LOAD MODE4

No.	Mk.	Freq. MHz	Reading Level dBuV	Factor dB	Measurement dBuV	Limit dBuV	Over dB	Detector	Comment
1		0.1724	40.76	10.05	50.81	64.84	-14.03	QP	
2		0.1724	39.25	10.05	49.30	54.84	-5.54	AVG	
3		0.2286	39.61	10.07	49.68	62.50	-12.82	QP	
4	*	0.2286	37.81	10.07	47.88	52.50	-4.62	AVG	
5		0.2836	36.41	10.09	46.50	60.71	-14.21	QP	
6		0.2836	33.48	10.09	43.57	50.71	-7.14	AVG	
7		0.3330	34.87	10.10	44.97	59.38	-14.41	QP	
8		0.3330	34.18	10.10	44.28	49.38	-5.10	AVG	
9		0.6314	33.87	10.14	44.01	56.00	-11.99	QP	
10		0.6314	29.26	10.14	39.40	46.00	-6.60	AVG	
11		26.6523	35.66	10.93	46.59	60.00	-13.41	QP	
12		26.6523	20.77	10.93	31.70	50.00	-18.30	AVG	

*:Maximum data x:Over limit !:over margin

●Reference Only

Receiver: ESCS30

Spectrum Analyzer:

L.I.S.N: MMB-2/16Z /FOLF HEINE

Test Result: Pass

Pulse limiter: R & S/ESH3Z2

Engineer Signature: Paul

File :0407081\Data :#25

Page: 1