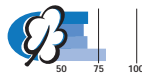
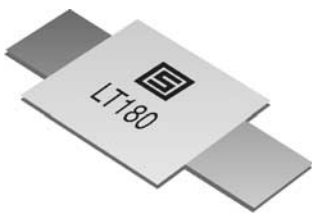


**Axial leaded
PTC-Fuses
Type PFLT**

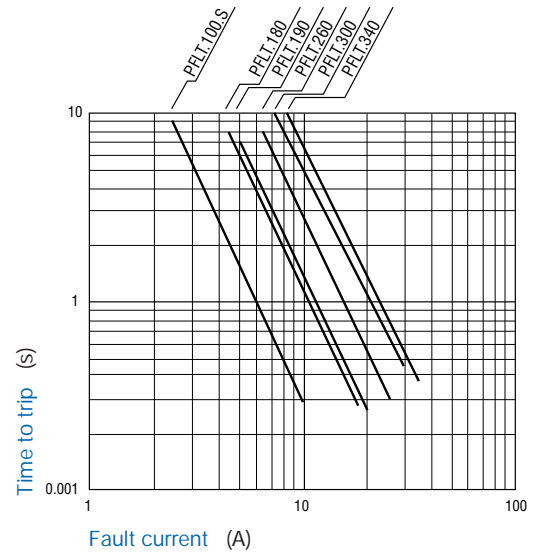
Fully compatible with current industry standards
Weldable nickel terminals

Very low internal resistance

Agency recognition:
UL, CSA, TÜV (pending)



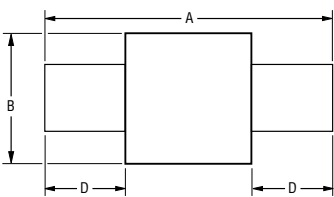
Typical Time to Trip at 23 °C



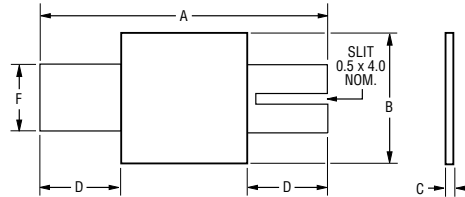
Applications

Any application that requires extra protection at elevated ambient temperatures, which the 100 °C trip temperature provides, including rechargeable battery pack protection, cellular phones, laptop computers

Standard Style

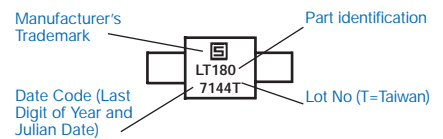


"S" Style



Typical Part Marking

Layout may vary



Environmental Characteristics

Operating/Storage Temperature	-40 °C to +85 °C	
Maximum Device Surface Temperature in Tripped State	125 °C	
Passive Aging	+85 °C, 1000 hours	±5% typ. resist. change
Humidity Aging	+85 °C, 85% R.H. 1000 hours	±5% typ. resist. change
Thermal Shock	+85 °C/-40 °C 10 times	±10% typ. resist. change
Vibration	MIL-STD-883C, Method 2007.1, Condition A	No change

*) MIL-STD-202F, Method 107G

Test Procedures And Requirements For Model PFLT Series

Test	Test Conditions	Accept/Reject Criteria
Visual/Mech.	Verify dimensions and materials	Per PF physical description
Resistance	In still air @ 23 °C	$R_{min} \leq R \leq R_{max}$
Time to Trip	5 times I_{hold} , V_{max} , 23 °C	$T \leq \text{max. time to trip (sec.)}$
Hold Current	30 min. at I_{hold}	No trip
Trip Cycle Life	V_{max} , I_{max} , 100 cycles	No arcing or burning
Trip Endurance	V_{max} , 48 hours	No arcing or burning

FUSES

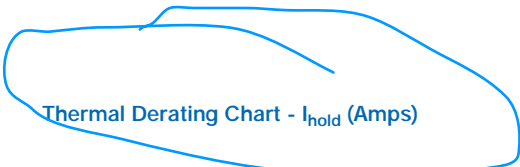
PFLT

Resettable fuses

Type	U _{max} V	I _{max} A	I _{hold}	I _{trip}	Initial Resistance		1 Hour (R1) Post-Trip Resistance	Max. Time to trip at 23 °C		Tripped Power Dissipation
			Amperes at 23 °C		Ohms at 23 °C		Ohms at 23 °C	Amps	Seconds	Watts at 23 °C
			Hold	Trip	min.	max.	R _{1 max.}		max.	nom.
PFLT.100.S	24	100	1.0	2.5	0.070	0.130	0.260	5	7.0	1.5
PFLT.180	24	100	1.8	3.8	0.040	0.068	0.120	9	2.9	2.0
PFLT.180.S	24	100	1.8	3.8	0.040	0.068	0.120	9	2.9	2.0
PFLT.190	24	100	1.9	4.2	0.030	0.057	0.100	10	3.0	1.9
PFLT.260	24	100	2.6	5.2	0.025	0.042	0.076	13	5.0	2.3
PFLT.300	24	100	3.0	6.3	0.015	0.031	0.055	15	4.0	2.0
PFLT.340	24	100	3.4	6.8	0.016	0.027	0.050	17	5.0	2.7

Packaging

All models packaged in bulk, 500 pieces each.
 Packaged loose; optional slotted leads (.S) available for 1 A and 1.8 A ratings



Thermal Derating Chart - I_{hold} (Amps)

Type	Ambient Operating Temperature									
	-40 °C	-20 °C	0 °C	23 °C	40 °C	50 °C	60 °C	70 °C	85 °C	
PFLT.100.S	1.8	1.6	1.4	1.0	0.8	0.7	0.6	0.4	0.2	
PFLT.180	3.1	2.6	2.2	1.8	1.3	1.1	0.9	0.6	0.2	
PFLT.180.S	3.1	2.6	2.2	1.8	1.3	1.1	0.9	0.6	0.2	
PFLT.190	3.3	2.8	2.4	1.9	1.4	1.2	1.1	0.7	0.4	
PFLT.260	4.3	3.7	3.1	2.6	1.9	1.6	1.4	1.1	0.6	
PFLT.300	5.1	4.4	3.7	3.0	2.3	1.9	1.6	1.2	0.6	
PFLT.340	5.5	4.7	4.0	3.4	2.6	2.2	1.9	1.5	0.8	

Dimensions

Type	A		B		C		D		F		Package style
	min.	max.	min.	max.	min.	max.	min.	max.	min.	max.	
PFLT.100S	20.9	23.1	4.9	5.2	0.6	1.0	4.1	5.5	3.9	4.1	S
PFLT.180	24.0	26.0	4.9	5.2	0.6	1.0	4.1	5.5	3.9	4.1	Std.
PFLT.180S	24.0	26.0	4.9	5.2	0.6	1.0	4.1	5.5	3.9	4.1	S
PFLT.190	21.3	23.4	10.2	11.0	0.5	1.1	5.0	7.6	4.8	5.4	Std.
PFLT.260	24.0	26.0	10.8	11.9	0.6	1.0	5.0	7.0	5.9	6.1	Std.
PFLT.300	28.4	31.8	13.0	13.5	0.5	1.1	6.3	8.9	6.0	6.6	Std.
PFLT.340	24.0	26.0	14.8	15.9	0.6	1.0	4.0	5.0	5.9	6.1	Std.

Dimensions = mm

How To Order

