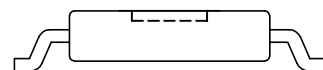
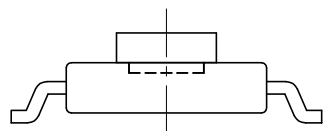
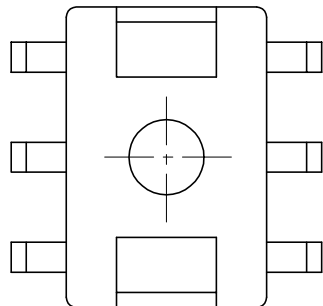


DRAWING NO.	MATERIAL:	ORIGIN:
SB-015-4	PM9630	SZ

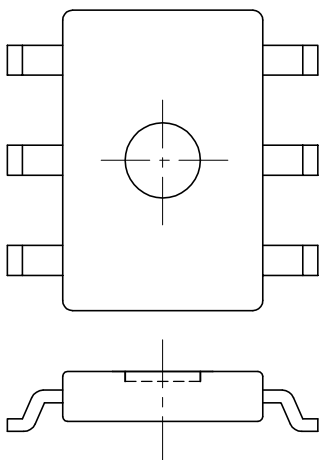


B-002.001P(B-002)

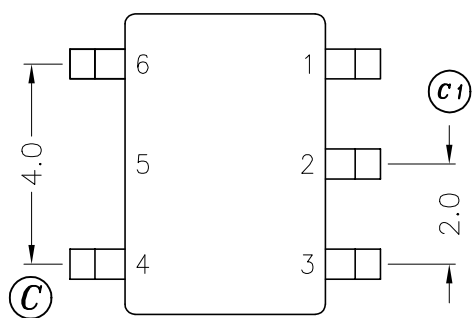
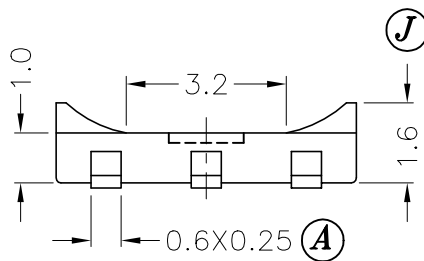
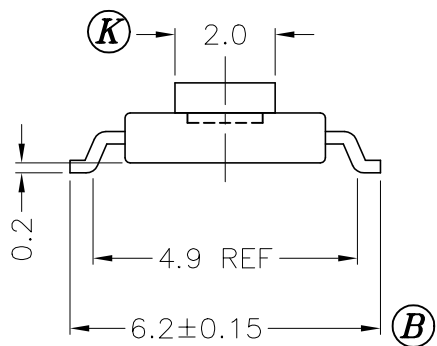
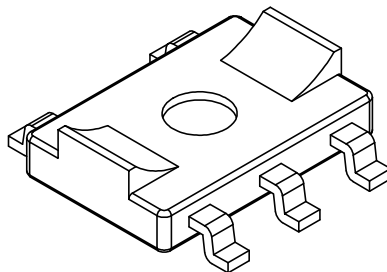
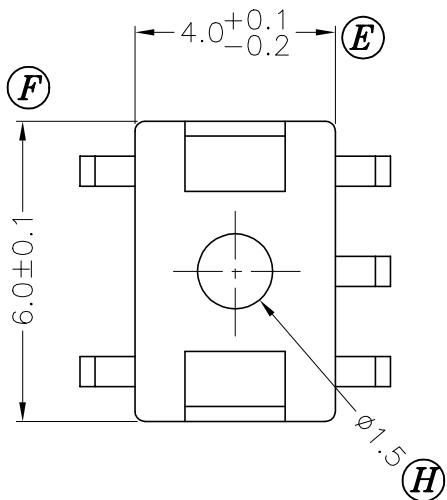
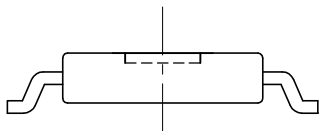
DRAWING NO.	MATERIAL:	ORIGIN:
SB-015-3	PM9630	DG



DRAWING NO.	MATERIAL:	ORIGIN:
SB-015-2	PM 9630	DG



DRAWING NO.	MATERIAL:	ORIGIN:
SB-015-1	PM9630	DG



B-001.001P(B-001)

REV.	REVISIONS	REC.	REV.	REVISIONS	REC.
1	CANCEL (G); UPDATE DRAWING.				

DRAWN & DRAFTED BY WANG CHENG	TOLERANCES		ANGLE:	TITLE:	
	0 < L ≤ 4 ± 0.1	COPLANARITY	± 1°	SMD BASE TO-B5F	
CHECKED & APPROVED BY LONG HONG JUN	4 < L ≤ 16 ± 0.2	0.1 MAX	UNIT:	BOBBIN MATERIAL:	UL REC.
	16 < L ≤ 63 ± 0.3		MM	PHENOLIC PM9630	UL 94V-0
PIN SHINE INDUSTRIAL CO., LTD. TEL: 886-2-22990545 FAX: 886-2-22990546			ORIGIN:	PIN MATERIAL:	PIN TENSION LOAD:
			DG SZ	PHOSPHOR BRONZE	1.0KG MIN
			DATE:	DRAWING NO.	REV.
			MAY.20 '2003	SB-015	1