

圖 Figure 4. 插刀的尺寸及配置處理 *Dimensions and disposition of pins (參見 clause 12)*

所有尺寸均為 mm All dimensions are in millimeters

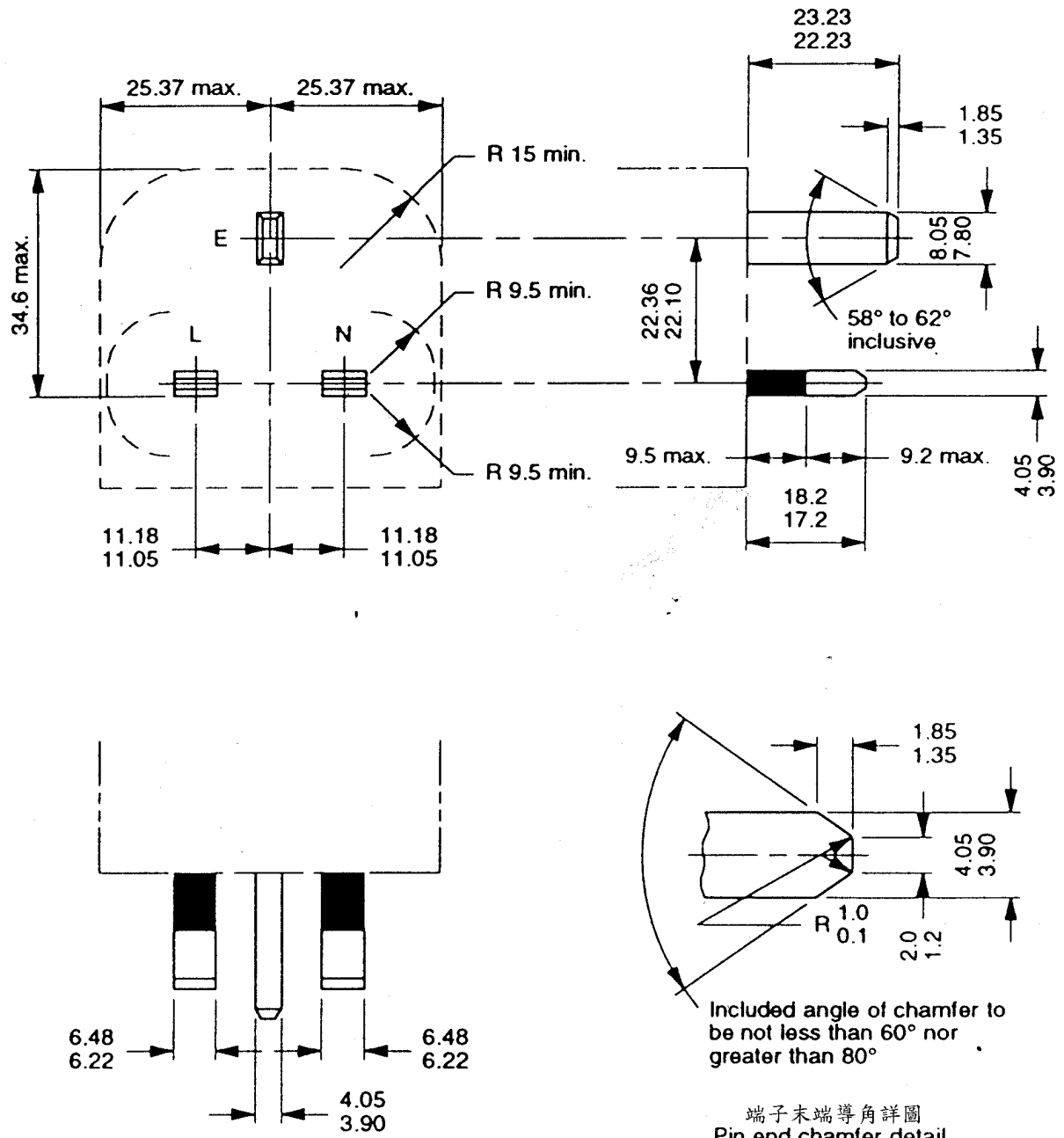
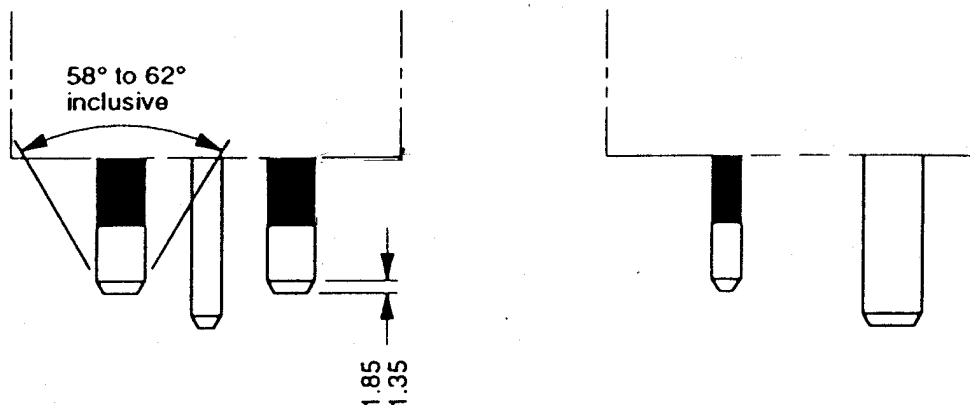
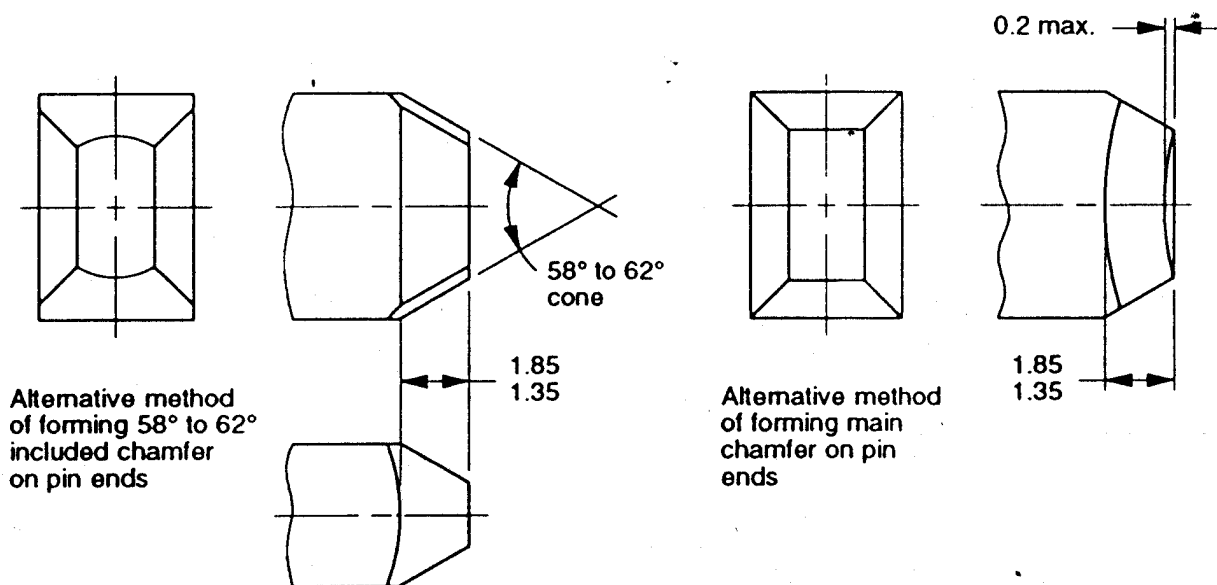


圖 Figure 4. 完結

所有尺寸均為 mm All dimensions are in millimeters



Permitted additional chamfers on L and N pins
(if additional chamfer is used it has to be on both pins)



註1. 端子外緣不得有殘屑或尖銳邊緣, 可以有不超過 1 mm 的半徑的導角.

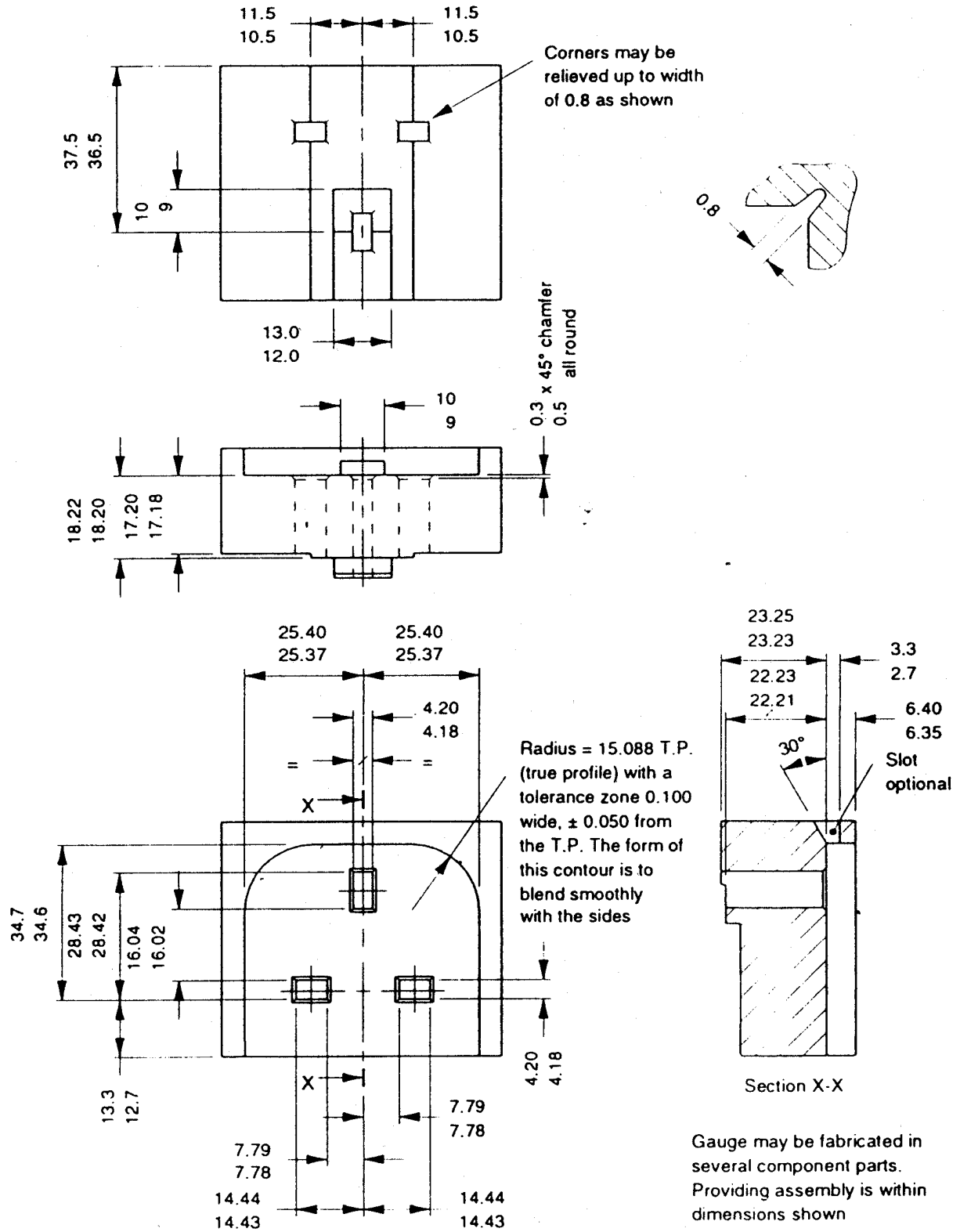
Note 1. External edges of pins are to be free from burrs or sharp edges and may have a radius not exceeding 1 mm.

註2. 端子表面應在規定公差內維持平整.

Note 2. The surfaces of pins are to be flat within the specified tolerances.

圖 Figure 5. 插頭插刀量規 Gauge for plug pins (參見 clause 20, 22)

所有尺寸均為 mm All dimensions are in millimeters



Gauge may be fabricated in several component parts. Providing assembly is within dimensions shown