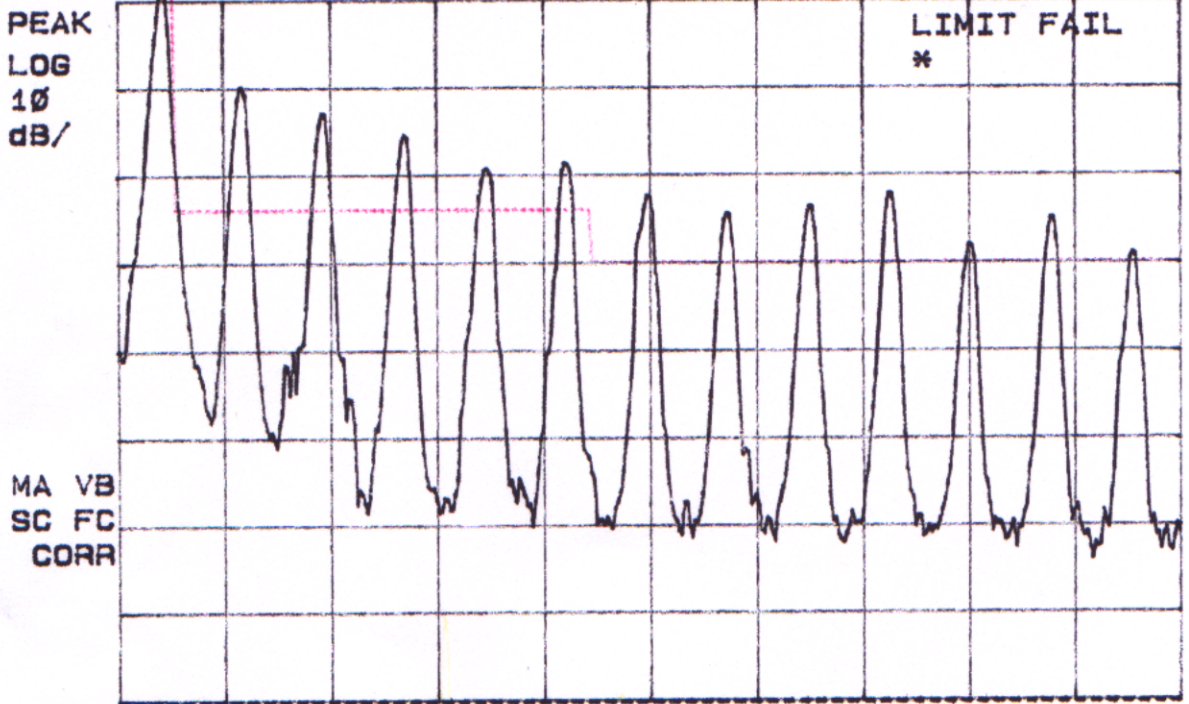


15:34:28 OCT 28, 2005

17:33:15 MAY 28, 1992

REF 90.0 dB μ V #AT 10 dB PG -10.0 dB



START 100.0 KHz

#RES BW 9.0 KHz

VBW 30 KHz

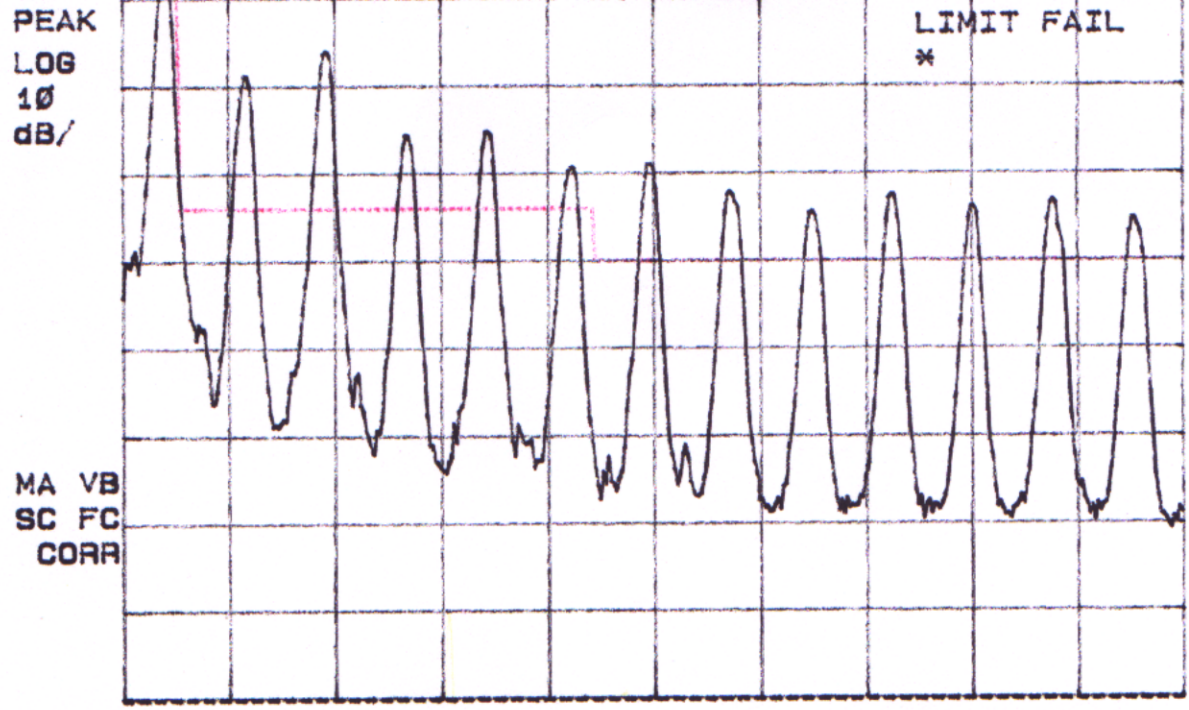
STOP 1.0000 MHz

SWP 33.3 msec

15:30:57 OCT 28, 2005

17:33:15 MAY 28, 1992

REF 90.0 dB μ V #AT 10 dB PG -10.0 dB



START 100.0 KHz

#RES BW 9.0 KHz

VBW 30 KHz

STOP 1.0000 MHz

SWP 33.3 msec