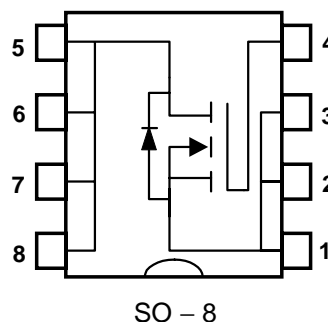


N-Channel Enhancement Mode MOSFET

Features

- 30V/23A , $R_{DS(ON)}=4.5m\Omega(\text{typ.}) @ V_{GS}=10V$
 $R_{DS(ON)}=7m\Omega(\text{typ.}) @ V_{GS}=5V$
- Super High Dense Cell Design for Extremely Low $R_{DS(ON)}$
- Reliable and Rugged
- SO-8 Package

Pin Description



Applications

- Power Management in Notebook Computer ,
 Portable Equipment and Battery Powered
 Systems .

Ordering and Marking Information

APM4430 □□-□□ □□ - Handling Code □□ - Temp. Range □□ - Package Code	Package Code K : SO-8 Operating Junction Temp. Range C : -55 to 150°C Handling Code TU : Tube TR : Tape & Reel
APM4430 K : APM4430 XXXXX	XXXXX - Date Code

Absolute Maximum Ratings ($T_A = 25^\circ\text{C}$ unless otherwise noted)

Symbol	Parameter	Rating	Unit
V_{DSS}	Drain-Source Voltage	30	V
V_{GSS}	Gate-Source Voltage	± 20	
I_D	Maximum Drain Current – Continuous	23	A
I_{DM}	Maximum Drain Current – Pulsed	± 60	

ANPEC reserves the right to make changes to improve reliability or manufacturability without notice, and advise customers to obtain the latest version of relevant information to verify before placing orders.

Absolute Maximum Ratings ($T_A = 25^\circ\text{C}$ unless otherwise noted)

Symbol	Parameter	Rating	Unit	
P_D	Maximum Power Dissipation*	$T_A = 25^\circ\text{C}$	1.6	W
		$T_A = 70^\circ\text{C}$	0.625	
T_J	Maximum Junction Temperature	150	$^\circ\text{C}$	
T_{STG}	Storage Temperature Range	-55 to 150		
R_{thJA}	Thermal Resistance – Junction to Ambient	80	$^\circ\text{C}/\text{W}$	

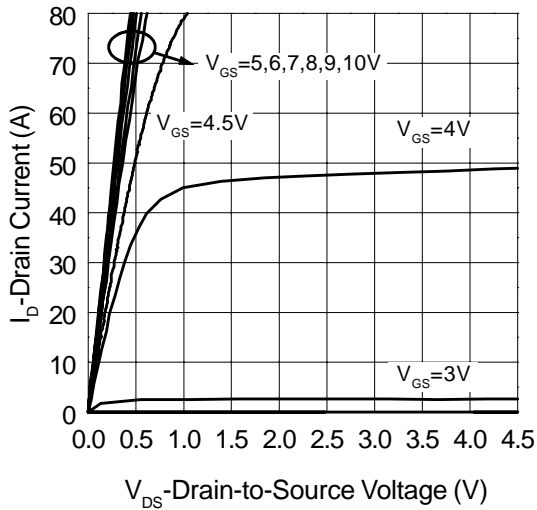
* Surface Mounted on FR4 Board, $t \leq 10$ sec.

Electrical Characteristics ($T_A=25^\circ\text{C}$ unless otherwise noted)

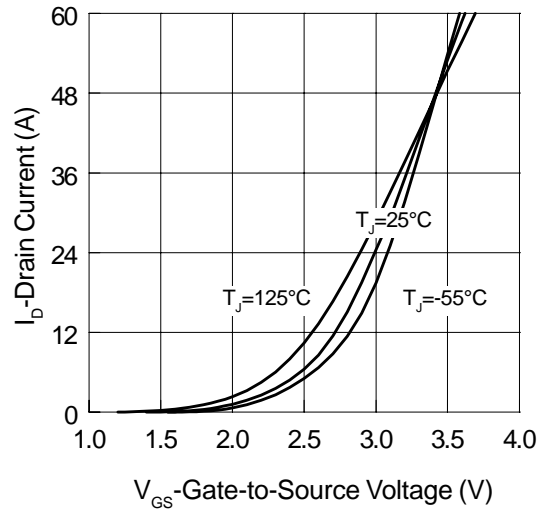
Symbol	Parameter	Test Condition	APM4430			Unit
			Min.	Typ.	Max.	
Static						
BV_{DSS}	Drain-Source Breakdown	$V_{\text{GS}}=0\text{V}, I_{\text{D}}=250\mu\text{A}$	30			V
I_{DSS}	Zero Gate Voltage Drain Current	$V_{\text{DS}}=24\text{V}, V_{\text{GS}}=0\text{V}$			1	μA
		$V_{\text{DS}}=24\text{V}, V_{\text{GS}}=0\text{V}, T_j = 55^\circ\text{C}$			5	μA
$V_{\text{GS(th)}}$	Gate Threshold Voltage	$V_{\text{DS}}=V_{\text{GS}}, I_{\text{D}}=250\mu\text{A}$	1		3	V
I_{GSS}	Gate Leakage Current	$V_{\text{GS}}=\pm 20\text{V}, V_{\text{DS}}=0\text{V}$			± 100	nA
$R_{\text{DS(ON)}}$	Drain-Source On-state Resistance	$V_{\text{GS}}=10\text{V}, I_{\text{D}}=23\text{A}$		4.5	5	m Ω
		$V_{\text{GS}}=5\text{V}, I_{\text{D}}=17\text{A}$		7	8	
V_{SD}	Diode Forward Voltage	$I_{\text{S}}=6\text{A}, V_{\text{GS}}=0\text{V}$	0.6		1.1	V
Dynamic						
Q_{g}	Total Gate Charge	$V_{\text{DS}}=15\text{V}, V_{\text{GS}}=4.5\text{V},$ $I_{\text{D}}=23\text{A}$		40	55	nC
Q_{gs}	Gate-Source Charge			17		nC
Q_{gd}	Gate-Drain Charge			14		nC
$t_{\text{d(ON)}}$	Turn-on Delay Time	$V_{\text{DD}}=15\text{V}, I_{\text{D}}=1\text{A},$ $V_{\text{GEN}}=10\text{V}, R_{\text{G}}=0.2\Omega$		30	45	ns
t_{r}	Turn-on Rise Time			16	24	ns
$t_{\text{d(OFF)}}$	Turn-off Delay Time			100	150	ns
t_{f}	Turn-off Fall Time			55	70	ns
C_{ISS}	Input Capacitance	$V_{\text{GS}}=0\text{V}$		4800		pF
C_{OSS}	Output Capacitance	$V_{\text{DS}}=15\text{V}$		900		pF
C_{RSS}	Reverse Transfer Capacitance	Frequency=1.0MHz		320		pF

Typical Characteristics

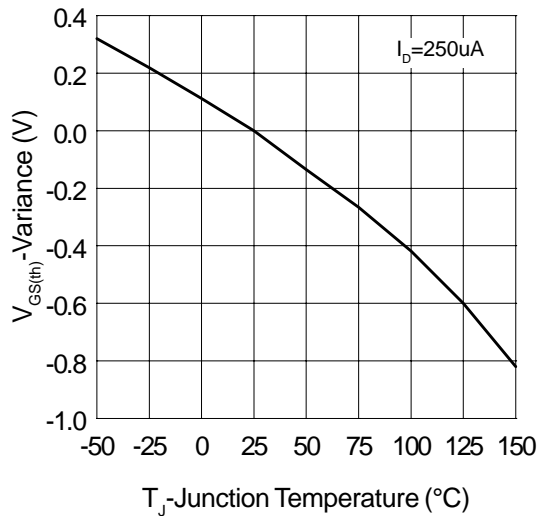
Output Characteristics



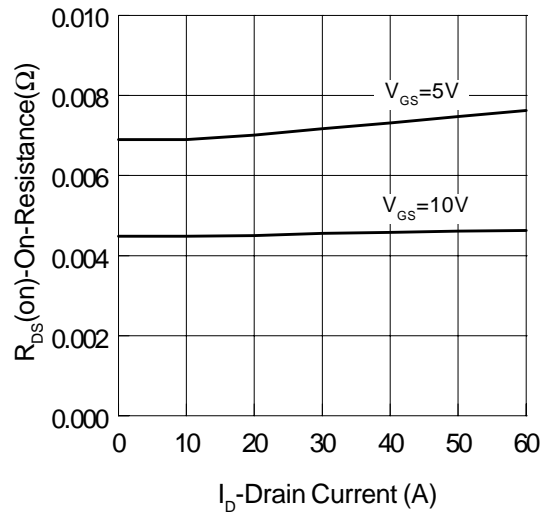
Transfer Characteristics



Threshold Voltage

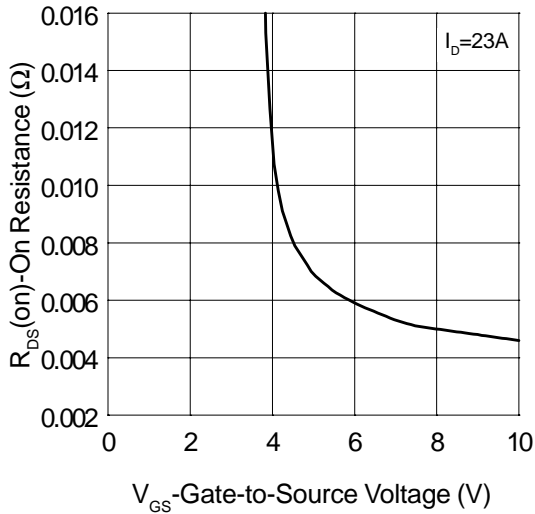


On-Resistance vs. Drain Current

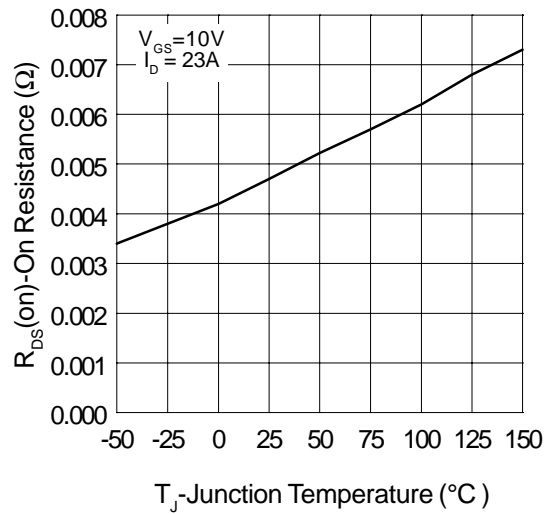


Typical Characteristics

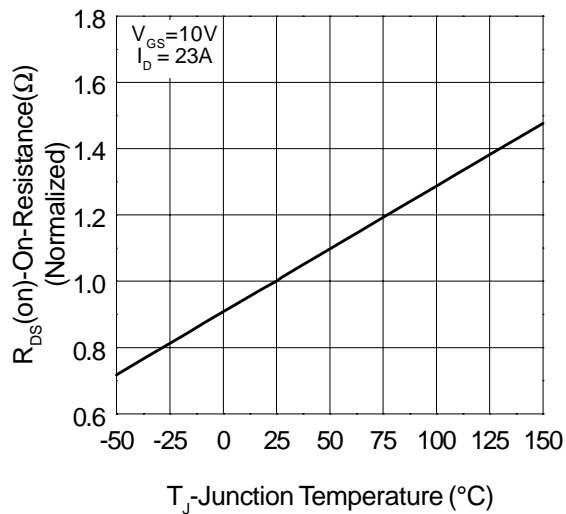
On-Resistance vs. Gate-to-Source Voltage



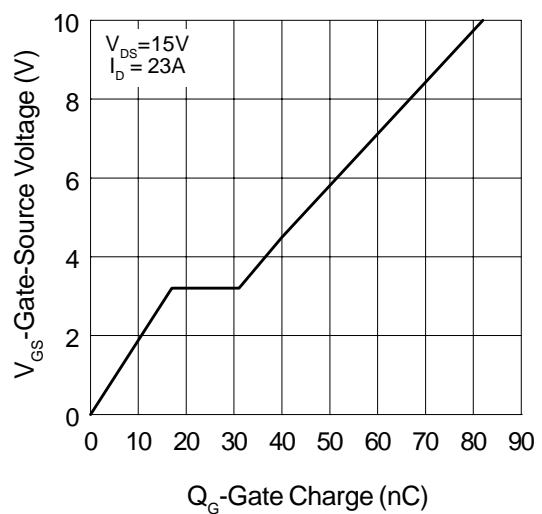
On-Resistance vs. Junction Temperature



On-Resistance vs. Junction Temperature

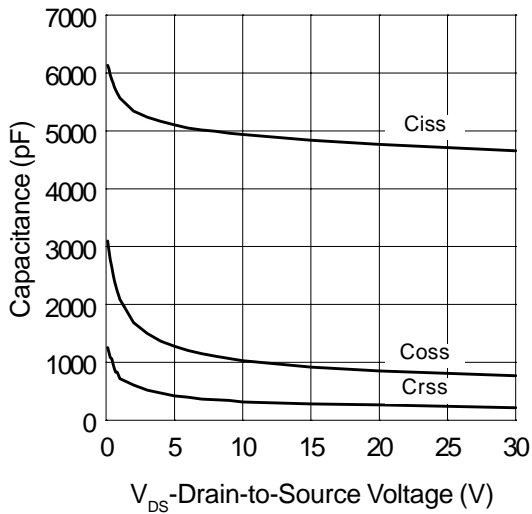


Gate Charge

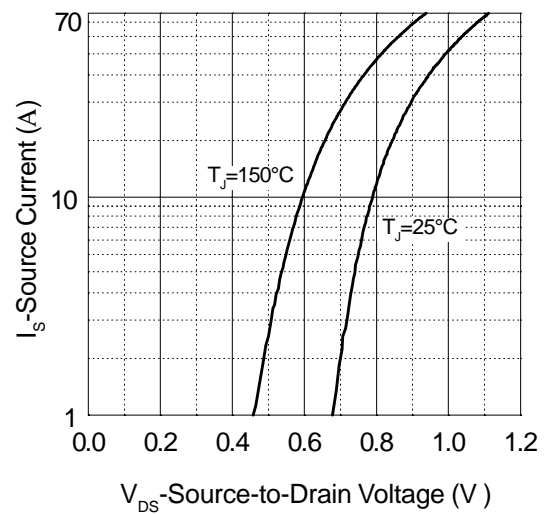


Typical Characteristics

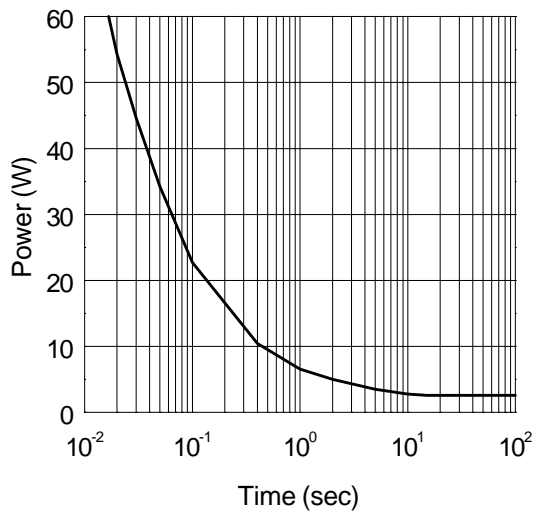
Capacitance



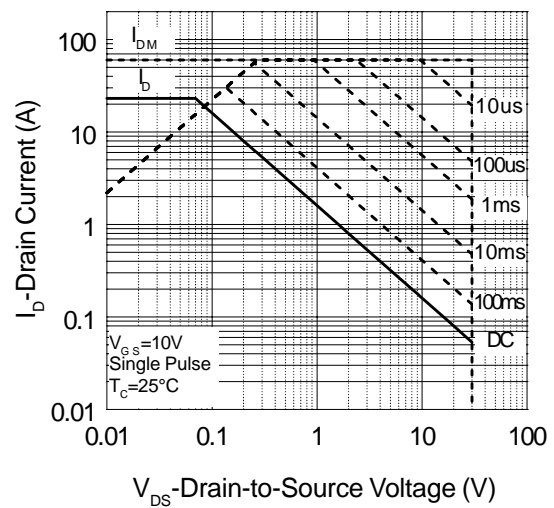
Source-Drain Diode Forward Voltage



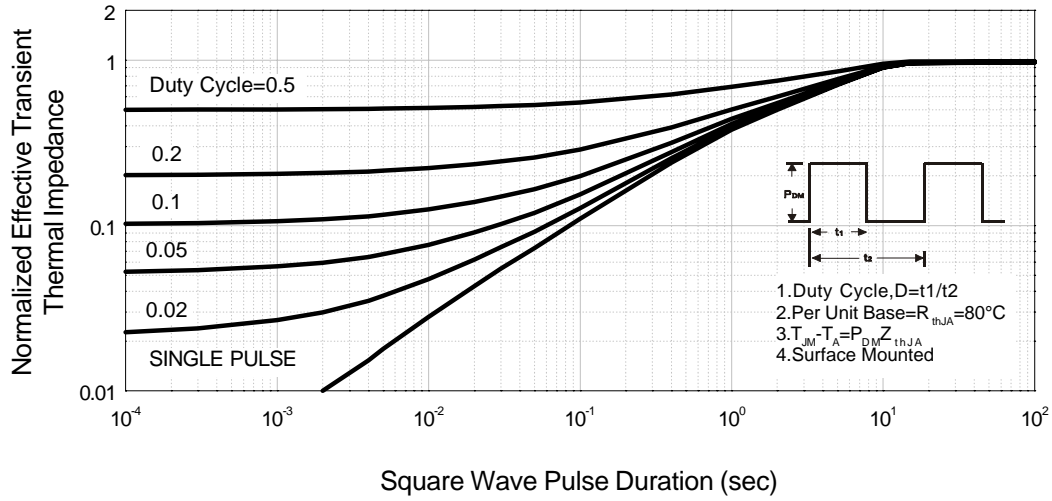
Single Pulse Power



Safe Operation Area

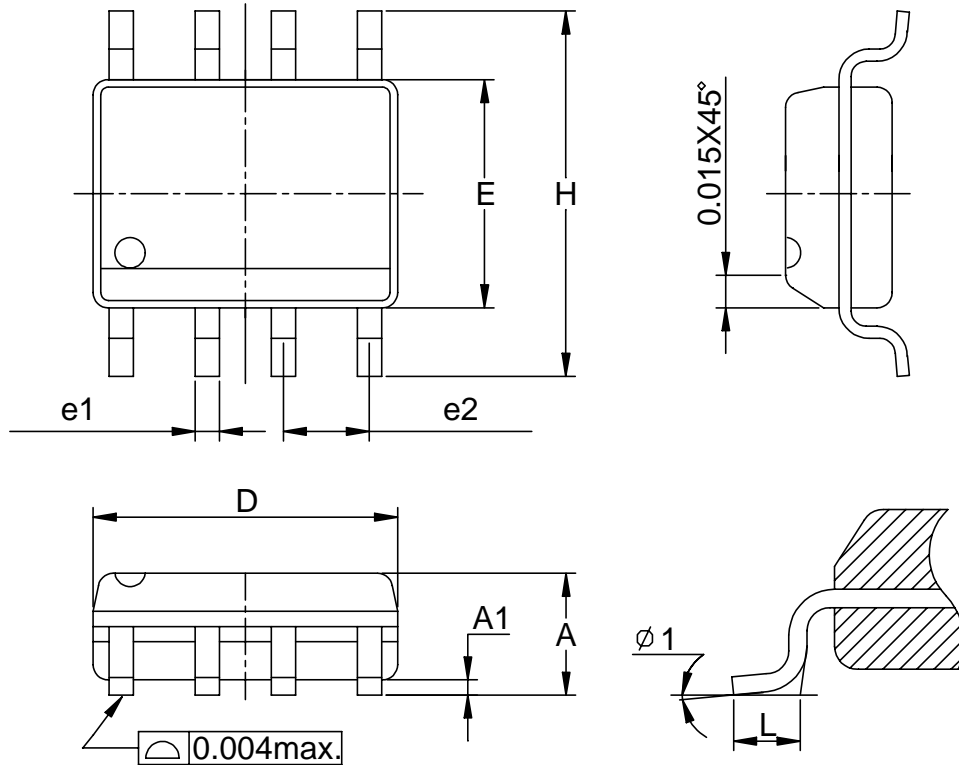


Typical Characteristics



Packaging Information

SOP-8 pin (Reference JEDEC Registration MS-012)

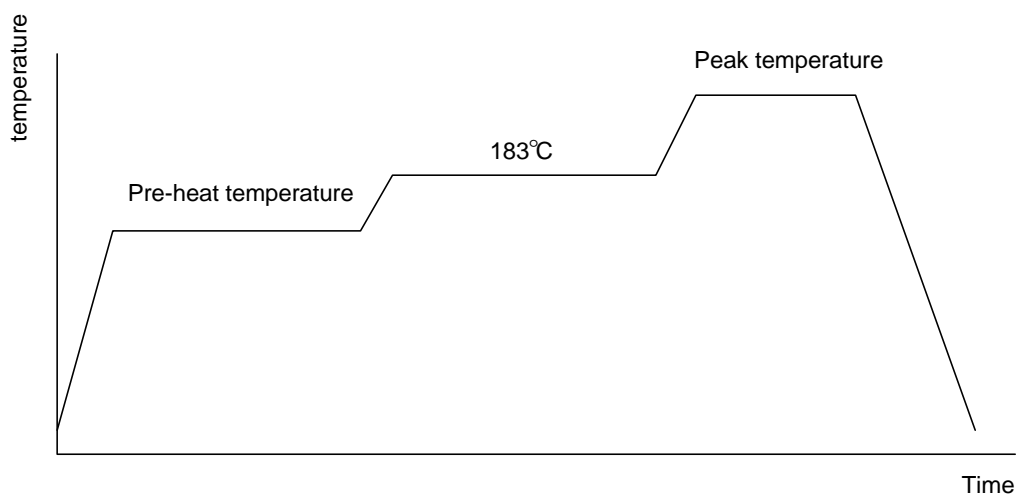


Dim	Millimeters		Inches	
	Min.	Max.	Min.	Max.
A	1.35	1.75	0.053	0.069
A1	0.10	0.25	0.004	0.010
D	4.80	5.00	0.189	0.197
E	3.80	4.00	0.150	0.157
H	5.80	6.20	0.228	0.244
L	0.40	1.27	0.016	0.050
e1	0.33	0.51	0.013	0.020
e2	1.27BSC		0.50BSC	
φ 1	8°		8°	

Physical Specifications

Terminal Material	Solder-Plated Copper (Solder Material : 90/10 or 63/37 SnPb).
Lead Solderability	Meets EIA Specification RSI86-91, ANSI/J-STD-002 Category 3.

Reflow Condition (IR/Convection or VPR Reflow)



Classification Reflow Profiles

	Convection or IR/ Convection	VPR
Average ramp-up rate(183°C to Peak)	3°C/second max.	10 °C /second max.
Preheat temperature 125 ± 25°C)	120 seconds max	
Temperature maintained above 183°C	60 – 150 seconds	
Time within 5°C of actual peak temperature	10 –20 seconds	60 seconds
Peak temperature range	220 +5/-0°C or 235 +5/-0°C	215-219°C or 235 +5/-0°C
Ramp-down rate	6 °C /second max.	10 °C /second max.
Time 25°C to peak temperature	6 minutes max.	

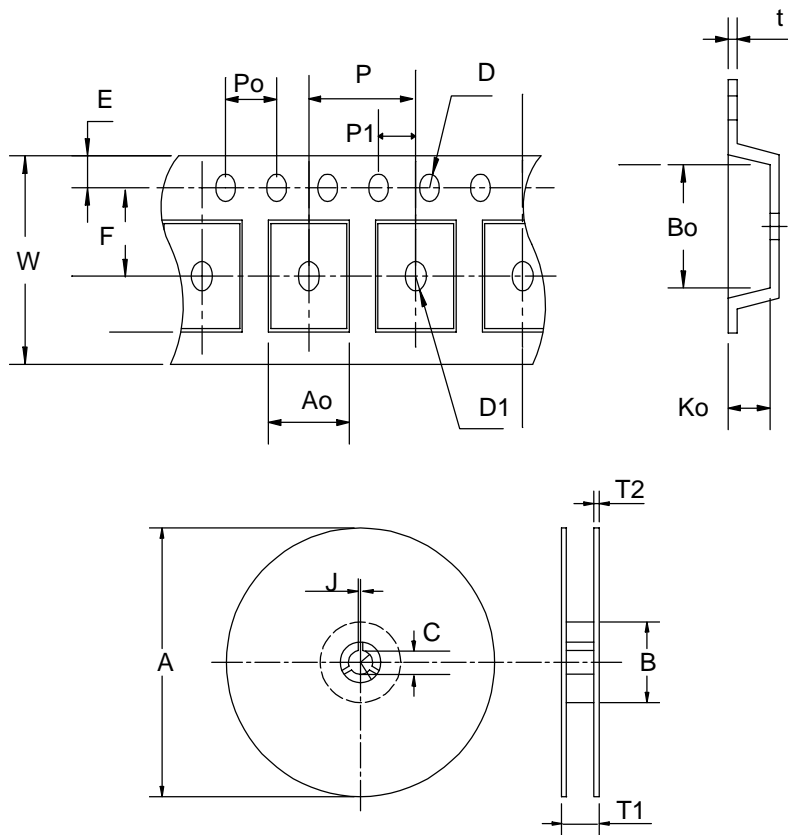
Package Reflow Conditions

pkg. thickness ≥ 2.5mm and all bgas	pkg. thickness < 2.5mm and pkg. volume ≥ 350 mm ³	pkg. thickness < 2.5mm and pkg. volume < 350mm ³
Convection 220 +5/-0 °C		Convection 235 +5/-0 °C
VPR 215-219 °C		VPR 235 +5/-0 °C
IR/Convection 220 +5/-0 °C		IR/Convection 235 +5/-0 °C

Reliability test program

Test item	Method	Description
SOLDERABILITY	MIL-STD-883D-2003	245°C, 5 SEC
HOLT	MIL-STD 883D-1005.7	1000 Hrs Bias @ 125°C
PCT	JESD-22-B, A102	168 Hrs, 100% RH, 121°C
TST	MIL-STD 883D-1011.9	-65°C ~ 150°C, 200 Cycles

Carrier Tape & Reel Dimensions



Application	A	B	C	J	T1	T2	W	P	E
SOP-8	330±1	62 ± 1.5	12.75 + 0.15	2 + 0.5	12.4 +0.2	2± 0.2	12 + 0.3 - 0.1	8± 0.1	1.75± 0.1
Application	F	D	D1	Po	P1	Ao	Bo	Ko	t
SOP-8	5.5 ± 0.1	1.55±0.1	1.55+ 0.25	4.0 ± 0.1	2.0 ± 0.1	6.4 ± 0.1	5.2± 0.1	2.1± 0.1	0.3±0.013

(mm)

Cover Tape Dimensions

Application	Carrier Width	Cover Tape Width	Devices Per Reel
SOP- 8	12	9.3	2500

Customer Service

Anpec Electronics Corp.

Head Office :

5F, No. 2 Li-Hsin Road, SBIP,

Hsin-Chu, Taiwan, R.O.C.

Tel : 886-3-5642000

Fax : 886-3-5642050

Taipei Branch :

7F, No. 137, Lane 235, Pac Chiao Rd.,

Hsin Tien City, Taipei Hsien, Taiwan, R. O. C.

Tel : 886-2-89191368

Fax : 886-2-89191369