

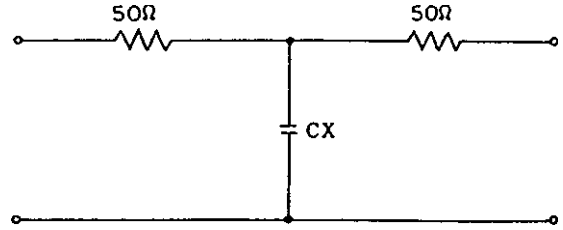
• INSERTION LOSS

The insertion loss of a capacitor is measured in a 50Ω system.

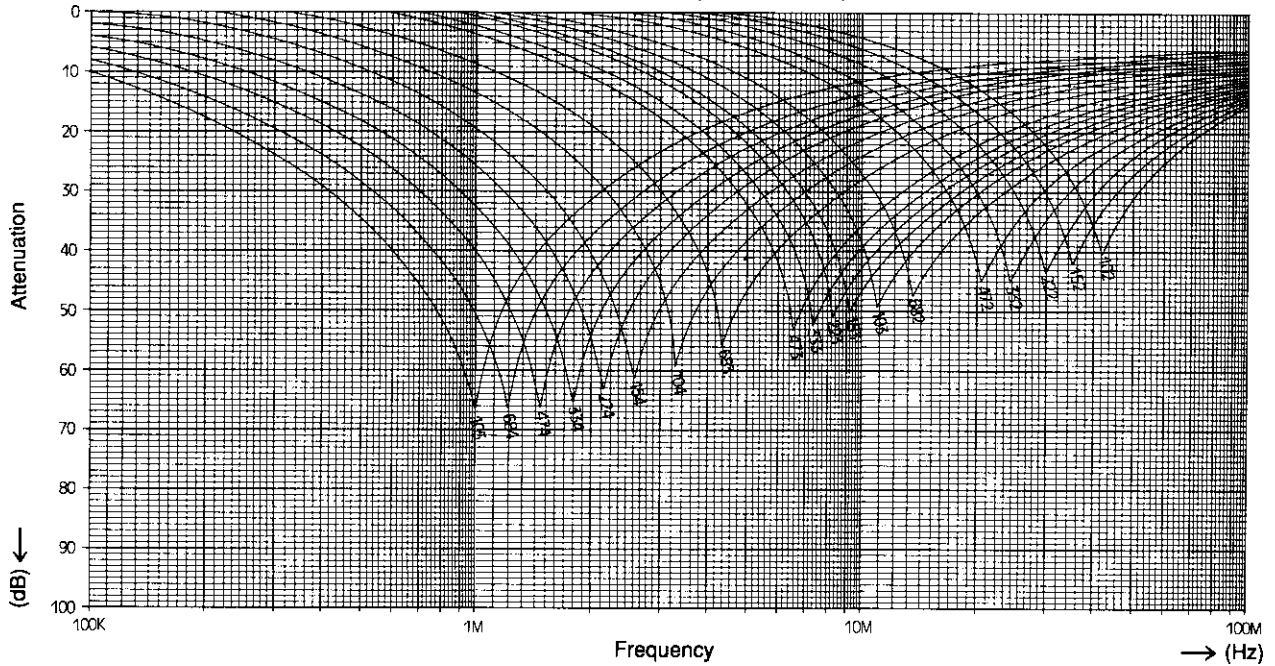
$$\text{Insertion Loss} = 20 \log_{10} (V2/V1) \text{ (dB)}$$

V1 Level without test sample

V2 Level with test sample



INSERTION LOSS (PA Series)



INSERTION LOSS (XE Series)

