

Test Report

No. SH595806-1/CHEM

Date: 12.21.2005

Page 1 of 3

EXCEL (SUZHOU) SEMICONDUCTOR CO., LTD
NO.8 YANGMING ROAD, SUZHOU, CHINA

THIS REPORT IS TO SUPERSEDE TEST REPORT NO. SH595806/CHEM, DATE: 12/13/2005.

The following sample(s) was/were submitted and identified on behalf of the applicant as:

Sample Name : DIODES
SGS Ref No. : SHEC0051235589-1
Model : DO41

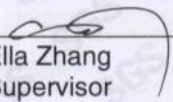
Sample Receiving Date : December 08, 2005
Testing Period : December 08 to December 13, 2005

Test Requested : 1) To determine the Cadmium Content of the submitted samples No.1~No.2.
2) To determine the Lead content of the submitted samples No.1~No.2.
3) To determine Mercury Content of the submitted samples No.1~No.2.
4) To determine Hexavalent Chromium content of the submitted sample No.1.
5) To determine Hexavalent Chromium content of the submitted sample No.2.
5) To determine the PBBs(Polybrominated biphenyls) PBBEs(PBDEs)
(Polybrominated biphenyl ethers) Content of the submitted samples No.1~No.2.

Test method : 1) With reference to BS EN 1122:2001, Method B or other acid digestion
Analysis was performed by Inductively Coupled Argon Plasma – Atomic Emission Spectrometry (ICP-AES) or Atomic Absorption Spectrometry.
2) With reference to US EPA Method 3050B or other acid digestion
Analysis was performed by Inductively Coupled Argon Plasma – Atomic Emission Spectrometry (ICP-AES) or Atomic Absorption Spectrometry.
3) With reference to US EPA 3052 or other acid digestion, Analysis was performed by Inductively Coupled Argon Plasma – Atomic Emission Spectrometry (ICP-AES) or US EPA7473 Analysis was performed by Hg Analyzer.
4) With reference to ISO 3613 : 2000(e).
Analysis was performed by UV-VIS Spectrometric method.
5) With reference to US EPA3060A and US EPA7196A
Analysis was performed by UV-VIS Spectrometric method.
6) With reference to USEPA 8081A/8270D/3540C/3550B, Analysis was performed by GC-MS.

Test Results : Please refer to next page

Signed for and on behalf of
SGS-CSTC Chemical Laboratory


Ella Zhang
Supervisor

This Test Report is issued by the Company subject to its General Conditions of Service printed overleaf or attached. Said Conditions are also available upon request or are accessible at www.sgs.com. Attention is drawn to the limitations of liability, indemnification and jurisdictional policies defined therein. The results shown in this Test Report refer only to the sample(s) tested unless otherwise stated and such sample(s) are retained for 90 days only. This Test Report shall not be reproduced except in full, without written approval of the Company.

Test Report

No. SH595806-1/CHEM

Date: 12.21.2005

Page 2 of 3

Test Results :

No.	Item	Unit	MDL	No.1
1	Cadmium (Cd)	ppm	2	N.D.
2	Lead (Pb)	ppm	2	72
3	Mercury (Hg)	ppm	2	N.D.
4	Hexavalent Chromium (Cr VI)	µg/cm ²	0.02	N.D.
		ppm*	2	N.D.
6	PBBs(Polybrominated biphenyls)	---	---	---
	PBBs(Bromobiphenyl)	ppm	5	N.D.
	PBBs(Dibromobiphenyl)	ppm	5	N.D.
	PBBs(Tribromobiphenyl)	ppm	5	N.D.
	PBBs(Tetrabromobiphenyl)	ppm	5	N.D.
	PBBs(Pentabromobiphenyl)	ppm	5	N.D.
	PBBs(Hexabromobiphenyl)	ppm	5	N.D.
	PBBs(Heptabromobiphenyl)	ppm	5	N.D.
	PBBs(Octabromobiphenyl)	ppm	5	N.D.
	PBBs(Nonabromobiphenyl)	ppm	5	N.D.
	PBBs(Decabromobiphenyl)	ppm	5	N.D.
	PBBEs(PBDEs)(Polybrominated biphenyl ethers)	---	---	---
	PBBEs(PBDEs)(Monobromobiphenyl ether)	ppm	5	N.D.
	PBBEs(PBDEs)(Dibromobiphenyl ether)	ppm	5	N.D.
	PBBEs(PBDEs)(Tribromobiphenyl ether)	ppm	5	N.D.
	PBBEs(PBDEs)(Tetrabromobiphenyl ether)	ppm	5	N.D.
	PBBEs(PBDEs)(Pentabromobiphenyl ether)	ppm	5	N.D.
	PBBEs(PBDEs)(Hexabromobiphenyl ether)	ppm	5	N.D.
	PBBEs(PBDEs)(Heptabromobiphenyl ether)	ppm	5	N.D.
	PBBEs(PBDEs)(Octabromobiphenyl ether)	ppm	5	N.D.
PBBEs(PBDEs)(Nonabromobiphenyl ether)	ppm	5	N.D.	
PBBEs(PBDEs)(Decabromobiphenyl ether)	ppm	5	N.D.	

This Test Report is issued by the Company subject to its General Conditions of Service printed overleaf or attached. Said Conditions are also available upon request or are accessible at www.sgs.com. Attention is drawn to the limitations of liability, indemnification and jurisdictional policies defined therein. The results shown in this Test Report refer only to the sample(s) tested unless otherwise stated and such sample(s) are retained for 90 days only. This Test Report shall not be reproduced except in full, without written approval of the Company.

No.	Item	Unit	MDL	No.2
1	Cadmium (Cd)	ppm	2	N.D.
2	Lead (Pb)	ppm	2	456417**
3	Mercury (Hg)	ppm	2	N.D.
5	Hexavalent Chromium (Cr VI)	ppm	2	N.D.
6	PBBs(Polybrominated biphenyls)	---	---	---
	PBBs(Bromobiphenyl)	ppm	5	N.D.
	PBBs(Dibromobiphenyl)	ppm	5	N.D.
	PBBs(Tribromobiphenyl)	ppm	5	N.D.
	PBBs(Tetrabromobiphenyl)	ppm	5	N.D.
	PBBs(Pentabromobiphenyl)	ppm	5	N.D.
	PBBs(Hexabromobiphenyl)	ppm	5	N.D.
	PBBs(Heptabromobiphenyl)	ppm	5	N.D.
	PBBs(Octabromobiphenyl)	ppm	5	N.D.
	PBBs(Nonabromobiphenyl)	ppm	5	N.D.
	PBBs(Decabromobiphenyl)	ppm	5	N.D.
	PBBEs(PBDEs)(Polybrominated biphenyl ethers)	---	---	---
	PBBEs(PBDEs)(Monobromobiphenyl ether)	ppm	5	N.D.
	PBBEs(PBDEs)(Dibromobiphenyl ether)	ppm	5	N.D.
	PBBEs(PBDEs)(Tribromobiphenyl ether)	ppm	5	N.D.
	PBBEs(PBDEs)(Tetrabromobiphenyl ether)	ppm	5	N.D.
	PBBEs(PBDEs)(Pentabromobiphenyl ether)	ppm	5	N.D.
	PBBEs(PBDEs)(Hexabromobiphenyl ether)	ppm	5	N.D.
	PBBEs(PBDEs)(Heptabromobiphenyl ether)	ppm	5	N.D.
	PBBEs(PBDEs)(Octabromobiphenyl ether)	ppm	5	N.D.
PBBEs(PBDEs)(Nonabromobiphenyl ether)	ppm	5	N.D.	
PBBEs(PBDEs)(Decabromobiphenyl ether)	ppm	5	N.D.	

Sample Appearance Description(Photo see appendix):

No.1: Silvery metal wire

No.2: Transparent glass tube

Note : ppm=mg/kg

MDL= Method Detection Limit

N.D. = Not detected.(<MDL)

*Result shown is of the total weight of sample, and only for reference.

**Only for reference

*** End of Report ***

This Test Report is issued by the Company subject to its General Conditions of Service printed overleaf or attached. Said Conditions are also available upon request or are accessible at www.sgs.com. Attention is drawn to the limitations of liability, indemnification and jurisdictional policies defined therein. The results shown in this Test Report refer only to the sample(s) tested unless otherwise stated and such sample(s) are retained for 90 days only. This Test Report shall not be reproduced except in full, without written approval of the Company.

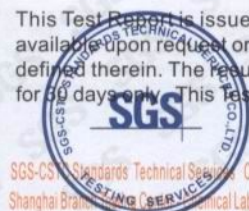
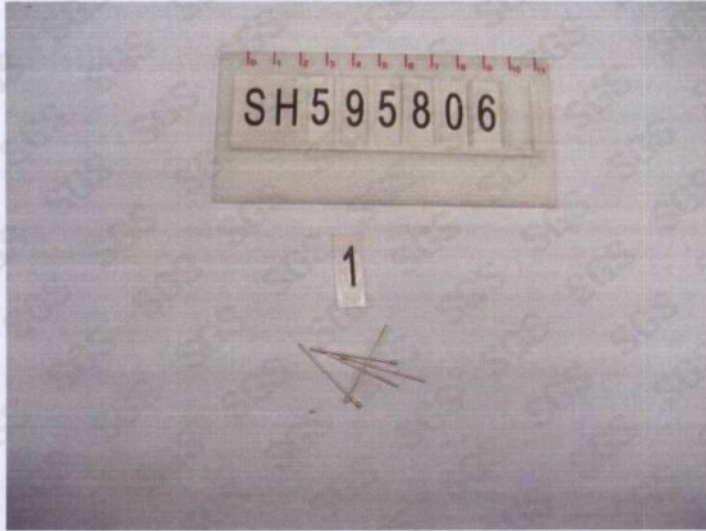
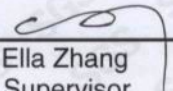


PHOTO APPENDIX



SGS authenticate the photo on original report only

Signed for and on behalf of
SGS-CSTC Chemical Laboratory


Ella Zhang
Supervisor

This Test Report is issued by the Company subject to its General Conditions of Service printed overleaf or attached. Said Conditions are also available upon request or are accessible at www.sgs.com. Attention is drawn to the limitations of liability, indemnification and jurisdictional policies defined therein. The results shown in this Test Report refer only to the sample(s) tested unless otherwise stated and such sample(s) are retained for 90 days only. This Test Report shall not be reproduced except in full, without written approval of the Company.