

摩托罗拉手机电池验证 IC 应用说明

1. 适用机型:V60、V66、V300、V303、V500、V600、E360、T720

完全适用于新机型: A760、A768、A780、A860、E398、E680、V80、V3、I90

2. 存储器代码:

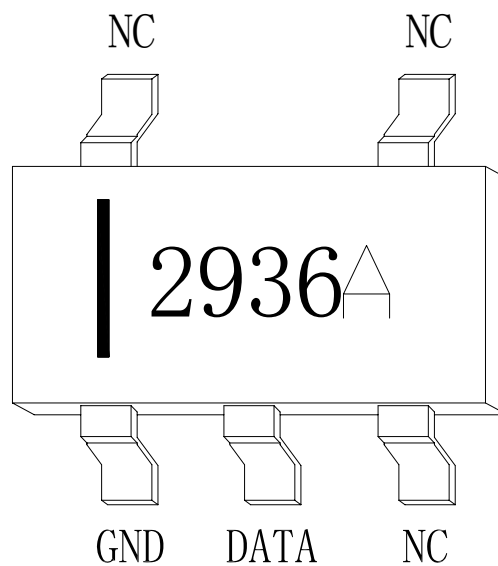
. 64 BIT LASERED ROM CODE:

	CRC		Serial number					FC
Byte	7	6	5	4	3	2	1	0
	40	50	00	09	27	CB	80	89

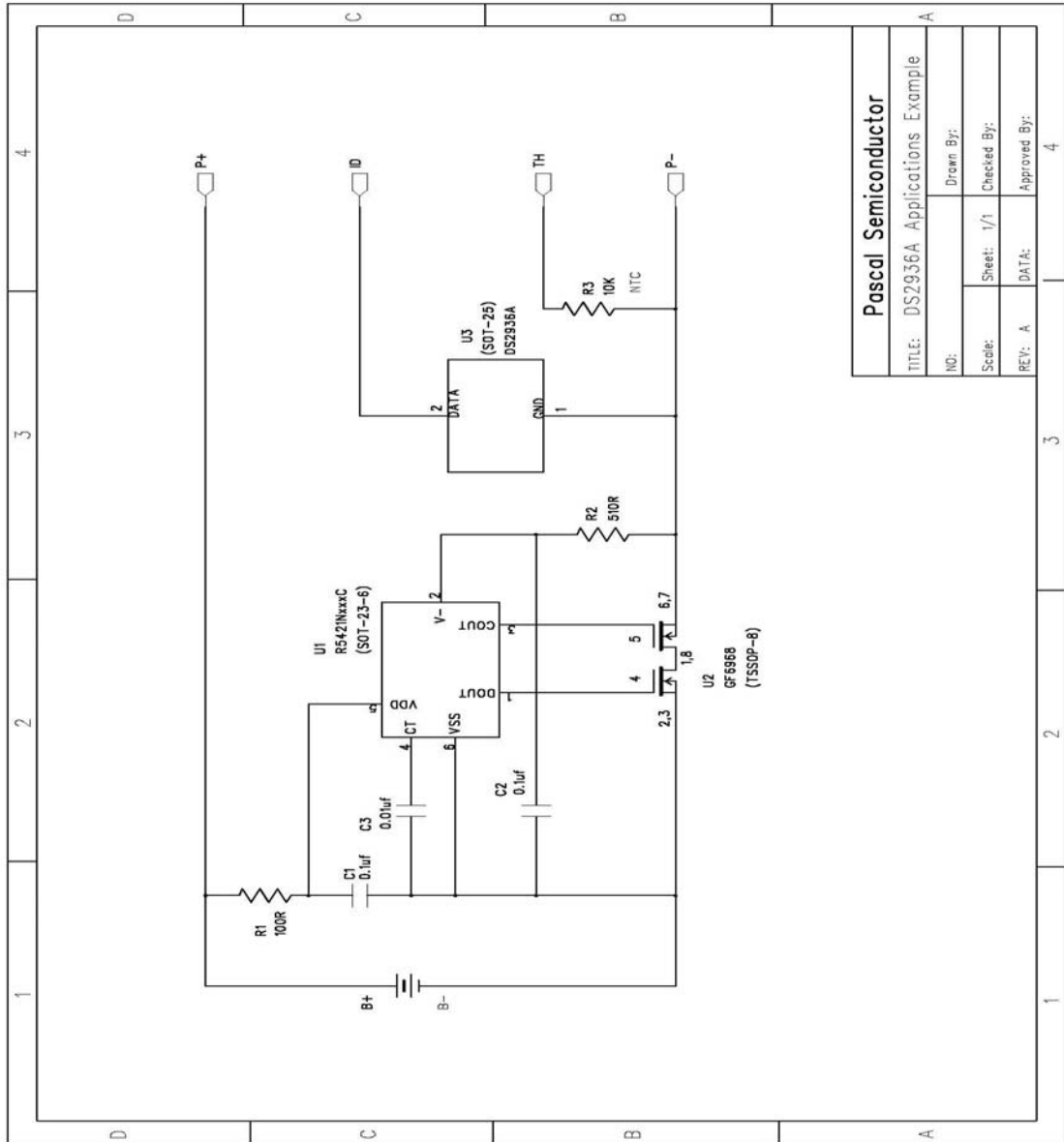
. 1024 BIT ROM CODE:

Byte	0	1	2	3	4	5	6	7	8	9	A	B	C	D	E	F
00x	58	01	98	00	00	19	14	01	E0	16	5A	0E	19	64	FF	01
01x	98	5A	90	95	0A	18	10	FF	83	85	87	8B	92	8A	89	FF
02x	E5	FF	32	56	D8	00	00	7A	4B	40	B4	05	01	0D	0F	00
03x	01	01	B0	48	91	B0	0D	3C	53	5F	66	3C	45	4F	59	1C
04x	13	B0	4A	92	B0	0D	3F	62	6D	73	3F	4A	4F	57	1B	FF
05x	B0	45	9D	A5	23	9C	A4	22	6E	84	88	8F	97	0C	70	02
06x	43	4F	50	52	32	30	30	31	4D	4F	54	4F	52	4F	4C	41
07x	20	45	2E	50	20	43	48	41	52	47	45	20	4F	4E	4C	59

3. 引脚丝印说明: (NC 脚为空脚)



3. 应用电路:



Pascal Semiconductor	
TITLE: DS2936A Applications Example	
NO:	Drawn By:
Scale:	Sheet: 1/1
REV: A	Checked By:
	Approved By: