

High Brightness Boost LED Driver with Excellent Current Regulation

General Description

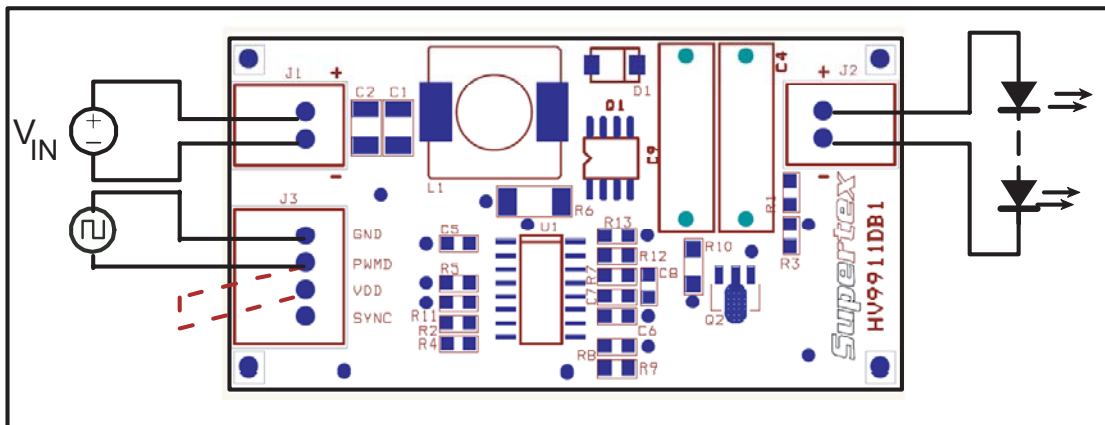
The HV9911DB1 is an LED driver capable of driving up to 20 one-watt LEDs in series from an input of 21 – 27V DC. The demoboard uses Supertex’s HV9911 in a boost topology. The converter has a very good initial regulation (+/-5%) and excellent line and load regulation over the entire input and output voltage range (<+/- 1%). The full load efficiency of the converter is typically greater than 90%.

The HV9911DB1 is also protected against open LED and output short circuit conditions. It also has an excellent PWM dimming response, with typical rise and fall times less than 10µs, which will allow high PWM dimming ratios.

The switching frequency of the HV9911DB1 can be synchronized to other HV9911 boards or to an external 200kHz clock by connecting the clock to the SYNC pin of the HV9911DB1.

Specifications	
Input Voltage (steady state):	21V – 27V DC
Output LED string voltage:	40V min - 80V max
Output current:	350mA +/-5%
Output Current Ripple:	10% typical
Switching Frequency:	200kHz
Efficiency:	90% (at 24V input)
Open LED protection:	Shuts down at 92V
Output short circuit protection:	Included
PWM Dimming frequency:	Up to 1kHz
Dimensions:	63.5mm X 34.5mm

Board Layout and Connections



Connections:

Input: The input is connected between the terminals of connector J1 as shown in the Connection Diagram.

Output: The output is connected between the terminals of connector J2 as shown.

Enable/PWM Dimming: To just enable the board, short pins PWMD and V_{DD} of connector J3 as shown. To PWM dim the board, connect the external push-pull square wave source between terminals PWMD and GND of connector J3 as shown by the dotted lines.

Note: During PWM dimming, pin 2 of connector J3 should be left open. Also, the PWM signal must have the proper polarity with the positive connected to pin 1 of J3. Note that pin 3 of J3 is internally connected to the return path of the input voltage.

SYNC: To synchronize two or more boards, connect the SYNC pins of all the boards together. To synchronize the HV9911DB1 to an external 200kHz clock, connect the clock between the SYNC and GND pins of terminal J3.

Testing The Demoboard:

Normal Operation: Connect the input source and the output LEDs as shown in the connection diagram and enable the board. The LEDs will glow with a steady intensity. Connecting an ammeter in series with the LEDs will allow measurement of the LED current. The current will be 350mA +/- 5%.

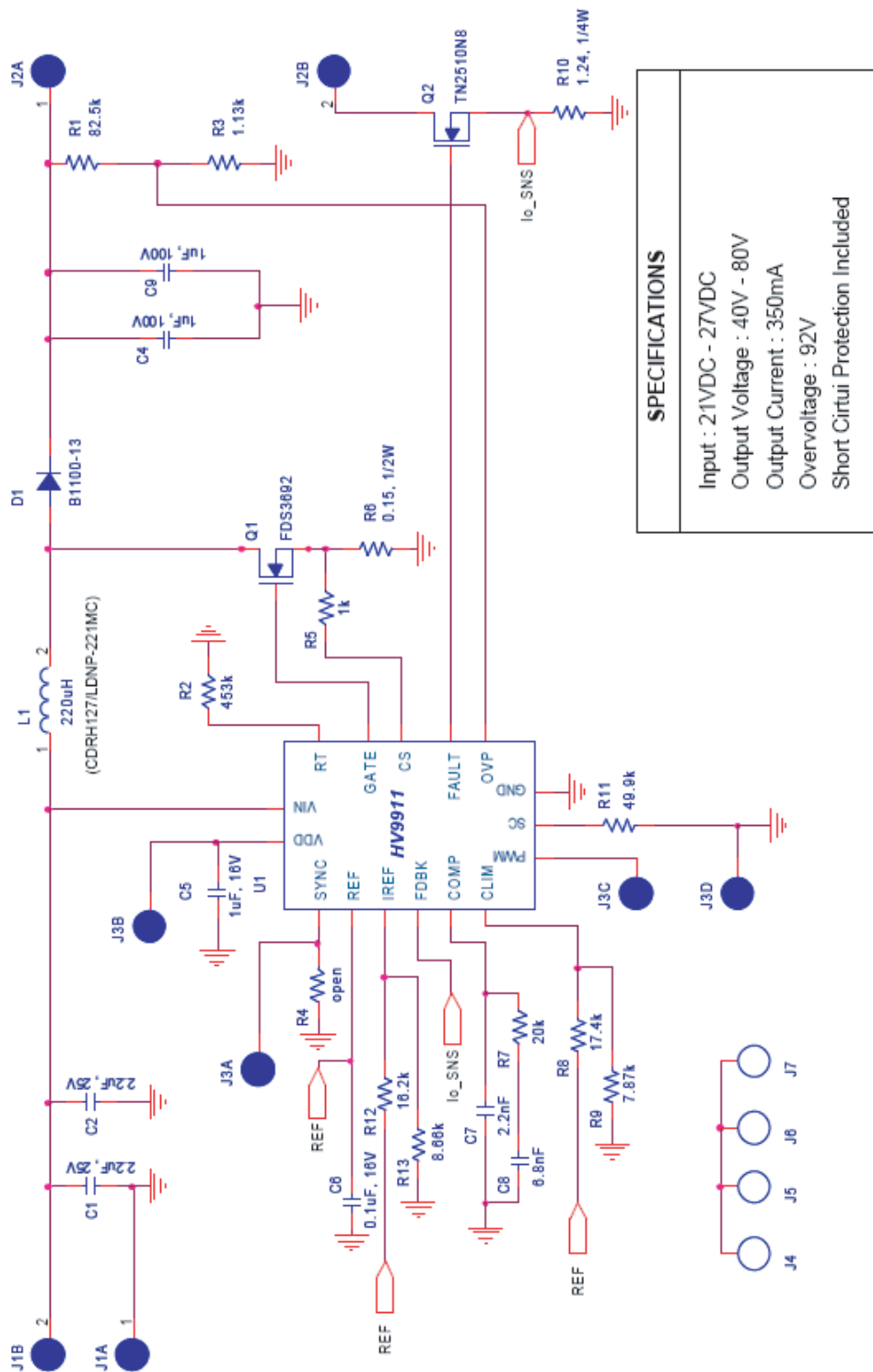
Current Regulation: With the input power to the converter disconnected, change the input voltage or the LED string voltage within the specifications mentioned. The current output of the HV9911DB1 will remain very steady during over the entire line and load range.

Open LED test: Connect a voltmeter across the output terminals of the HV9911DB1. Start the demoboard normally and once the LED current reaches steady state, unplug one end of the LED string from the demoboard. The output voltage will rise to about 92V and then the HV9911DB1 will shut down. To restart the converter, disconnect and reconnect the input voltage (recycle the power to the board).

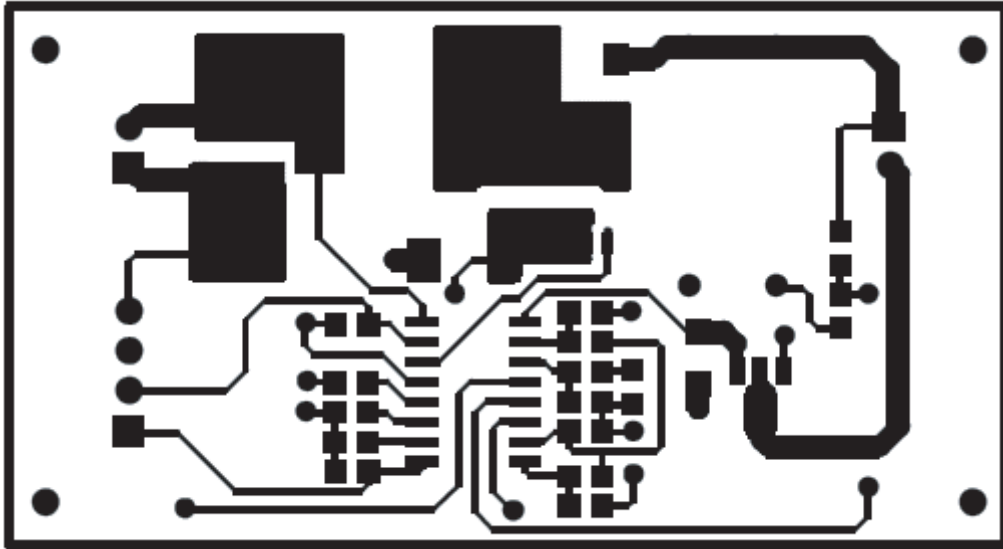
Short Circuit Test: When the HV9911DB1 is operating in steady state, connect a jumper across the terminals of the LED string. Notice that the output current will immediately go to zero and the converter will shut down. To restart the HV9911DB1, recycle the input power to the demoboard.

PWM Dimming: With the input voltage to the board disconnected, apply a TTL compatible, push-pull square wave signal between PWMD and GND terminals of connector J3 as shown in the Connection Diagram. Turn the input voltage back on and adjust the duty cycle and / or frequency of the PWM dimming signal. The output current will track the PWM dimming signal. Note that although the converter operates perfectly well at 1kHz PWM dimming frequency, the best PWM dimming ratio can be obtained at lower frequencies like 100 or 200Hz.

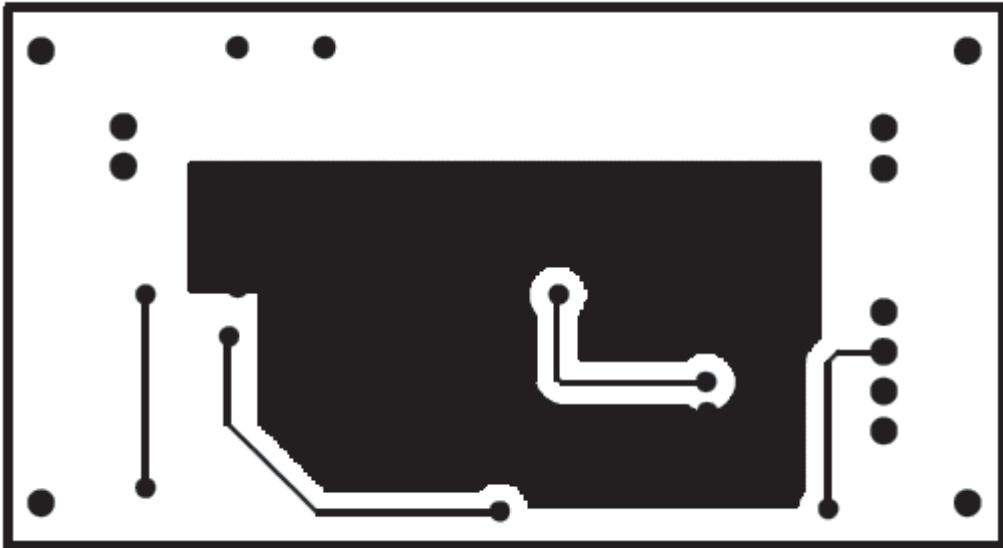
Circuit Schematic:



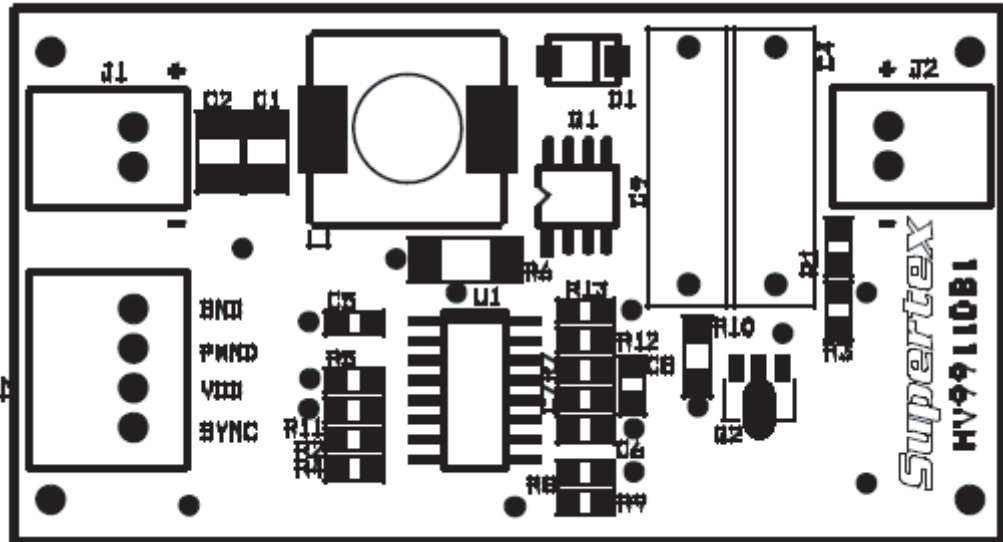
Top Layer:



Bottom Layer:



Silk Screen:



Bill of Materials

Item #	Quantity	RefDes	Description	Package	Manufacturer	Manufacturer's Part Number
1	2	C1,C2	2.2uF, 25V, X7R ceramic chip capacitor	SMD1210	TDK Corp	C3225X7R1H225K
2	2	C4,C9	1uF, 100V metal polyester capacitor	Radial	EPCOS Inc	B32522C1105J
3	1	C5	1uF, 16V X7R ceramic chip capacitor	SMD0805	TDK Corp	C2012X7R1C105K
4	1	C6	0.1uF, 16V X7R ceramic chip capacitor	SMD0805	Murata	GRM219R71C104KA01D
5	1	C7	2.2nF, 5%, 50V C0G ceramic chip capacitor	SMD0805	TDK Corp	C2012C0G1H222J
6	1	C8	6.8nF, 5%, 50V C0G ceramic chip capacitor	SMD0805	TDK Corp	C2012C0G1H682J
7	1	D1	100V, 1A schottky diode	SMA	Diodes Inc.	B1100-13
8	2	J1,J2	Side Entry 2-pin male header	Thru-Hole	JST Sales Amer.	S2B-EH
9	1	J3	Side Entry 4-pin male header	Thru-Hole	JST Sales Amer.	S4B-EH
10	1	L1	220uH, 2A sat, 1.5A rms inductor	SMT	Sumida	CDRH127/LDNP-221MC
11	1	Q1	100V, 4.55A N-Channel MOSFET	SO-8	Fairchild	FDS3692
12	1	Q2	100V, 1.5ohm N-Channel MOSFET	SOT-89	Supertex	TN2510N8
13	1	R1	82.5k, 1%, 1/8W chip resistor	SMD0805	Yageo	RC0805FR-0782K5L
14	1	R2	453k, 1%, 1/8W chip resistor	SMD0805	Yageo	RC0805FR-07453KL
15	1	R3	1.13k, 1%, 1/8W chip resistor	SMD0805	Yageo	RC0805FR-071K13L
16	1	R4	open			
17	1	R5	1k, 1%, 1/8W chip resistor	SMD0805	Yageo	RC0805FR-071KL
18	1	R6	0.15, 1%, 1/2W chip resistor	SMD2010	Vishay/ Dale	WSL2010R1500FEA
19	1	R7	20k, 1%, 1/8W chip resistor	SMD0805	Yageo	RC0805FR-0720KL
20	1	R8	17.4k, 1%, 1/8W chip resistor	SMD0805	Yageo	RC0805FR-0717K4L
21	1	R9	7.87k, 1%, 1/8W chip resistor	SMD0805	Yageo	RC0805FR-077K87L
22	1	R10	1.24, 1%, 1/4W chip resistor	SMD1206	Yageo	RC1206FR-071R24L
23	1	R11	49.9k, 1%, 1/8W chip resistor	SMD0805	Yageo	RC0805FR-0749K9L
24	1	R12	16.2k, 1%, 1/8W chip resistor	SMD0805	Yageo	RC0805FR-0716K2L
25	1	R13	8.66k, 1%, 1/8W chip resistor	SMD0805	Yageo	RC0805FR-078K66L
26	1	U1	Switchmode LED Driver with High Current Accuracy	SO-16	Supertex	HV9911NG

Supertex inc. does not recommend the use of its products in life support applications, and will not knowingly sell its products for use in such applications, unless it receives an adequate "product liability indemnification insurance agreement". **Supertex** does not assume responsibility for use of devices described and limits its liability to the replacement of the devices determined defective due to workmanship. No responsibility is assumed for possible omissions or inaccuracies. Circuitry and specifications are subject to change without notice. For the latest product specifications, refer to the **Supertex** website: <http://www.supertex.com>.

©2005 **Supertex inc.** All rights reserved. Unauthorized use or reproduction is prohibited.

Supertex inc.

1235 Bordeaux Drive, Sunnyvale, CA 94089
TEL: (408) 222-8888 / FAX: (408) 222-4895

www.supertex.com