

# GBPC35005 THRU GBPC3510

**SINGLE PHASE GLASS  
PASSIVATED BRIDGE RECTIFIER**  
VOLTAGE:50 TO 1000V      CURRENT:35.0A



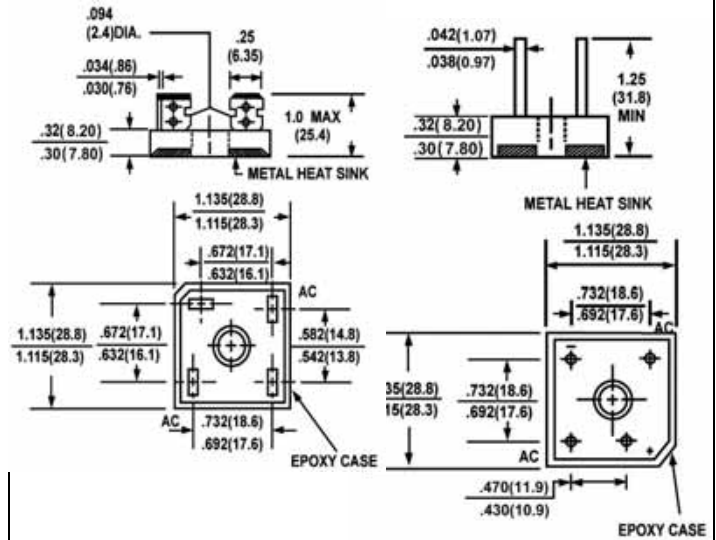
## FEATURE

Surge overload rating: 400 A peak  
low profile design  
1/4" Universal fast on terminal and  
φ40 mil lead-wire available

## MECHANICAL DATA

Polarity: Polarity symbol marked on body  
Mounting: Hole thru for # 10 screw

## GBPC/GBPCW



Dimensions in inches and (millimeters)

## MAXIMUM RATINGS AND ELECTRICAL CHARACTERISTICS

(single-phase, half -wave, 60HZ, resistive or inductive load rating at 25°C, unless otherwise stated, for capacitive load, derate current by 20%)

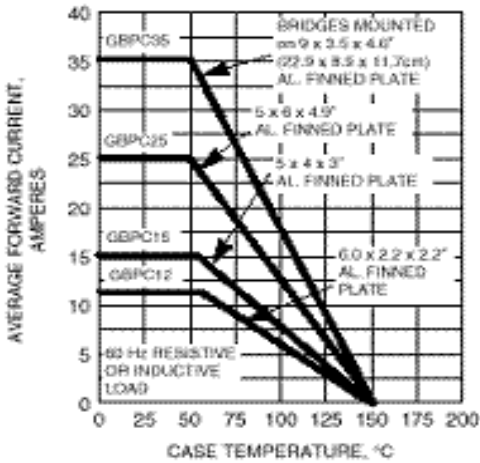
	SYMBOL	GBPC 35005	GBPC 3501	GBPC 3502	GBPC 3504	GBPC 3506	GBPC 3508	GBPC 3510	units
Maximum Recurrent Peak Reverse Voltage	V <sub>rrm</sub>	50	100	200	400	600	800	1000	V
Maximum RMS Voltage	V <sub>rms</sub>	35	70	140	280	420	560	700	V
Maximum DC blocking Voltage	V <sub>dc</sub>	50	100	200	400	600	800	1000	V
Maximum Average Forward Rectified Current at Ta=50°C	I <sub>f(av)</sub>	35.0							A
Peak Forward Surge Current 8.3ms single half sine-wave superimposed on rated load	I <sub>fsm</sub>	400.0							A
Maximum Instantaneous Forward Voltage at forward current 17.5A	V <sub>f</sub>	1.1							V
Maximum DC Reverse Current Ta =25°C at rated DC blocking voltage Ta =100°C	I <sub>r</sub>	10.0 500.0							μA μA
Operating Temperature Range	T <sub>j</sub>	-55 to +125							°C
Storage and Operation Junction Temperature	T <sub>stg</sub>	-55 to +150							°C

Note:

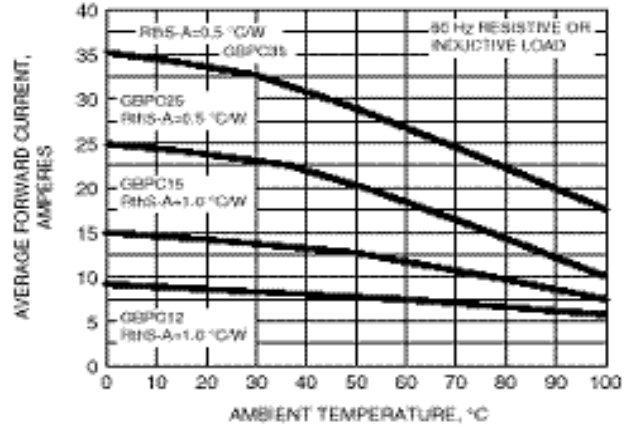
Suffix "W" for wire type

# RATINGS AND CHARACTERISTIC CURVES GBPC35005 THRU GBPC3510

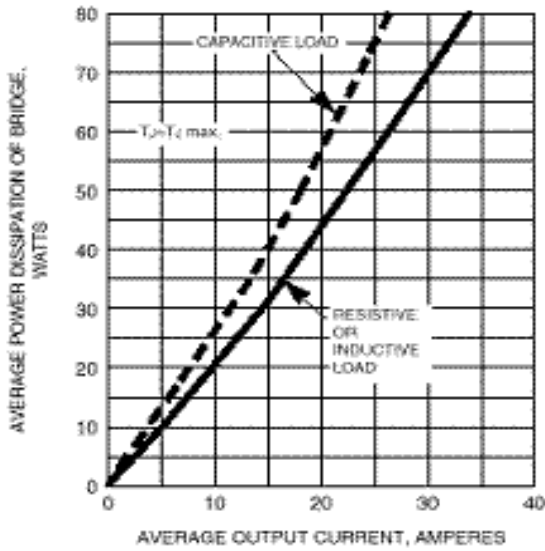
**FIG. 1 - MAXIMUM OUTPUT RECTIFIED CURRENT**



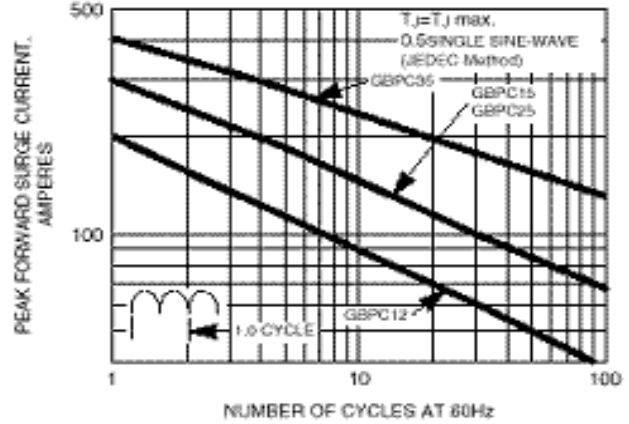
**FIG. 2 - MAXIMUM OUTPUT RECTIFIED CURRENT**



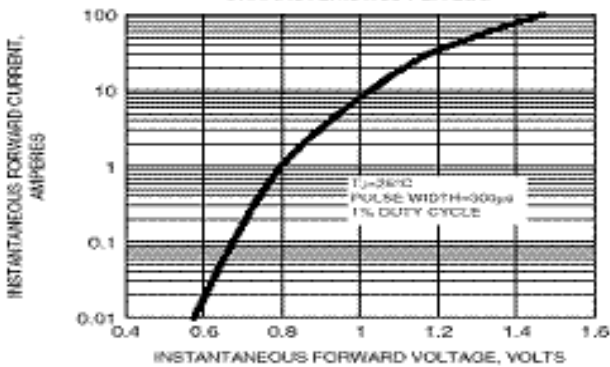
**FIG. 3 - MAXIMUM POWER DESCRIPTION**



**FIG. 4 - MAXIMUM NON-REPETITIVE PEAK FORWARD SURGE CURRENT PER LEG**



**FIG. 5 - TYPICAL INSTANTANEOUS FORWARD CHARACTERISTICS PER LEG**



**FIG. 6 - TYPICAL REVERSE LEAKAGE CHARACTERISTICS PER LEG**

