

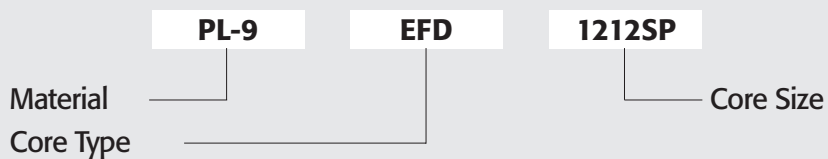
LOW PROFILE CORES

EFD12~EFD50

EPC10~EPC32

SI10~SI15, CI8

Ordering Code System

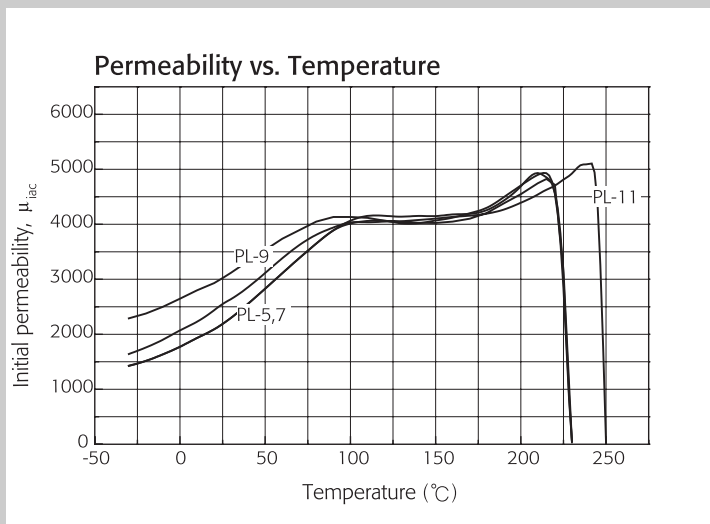
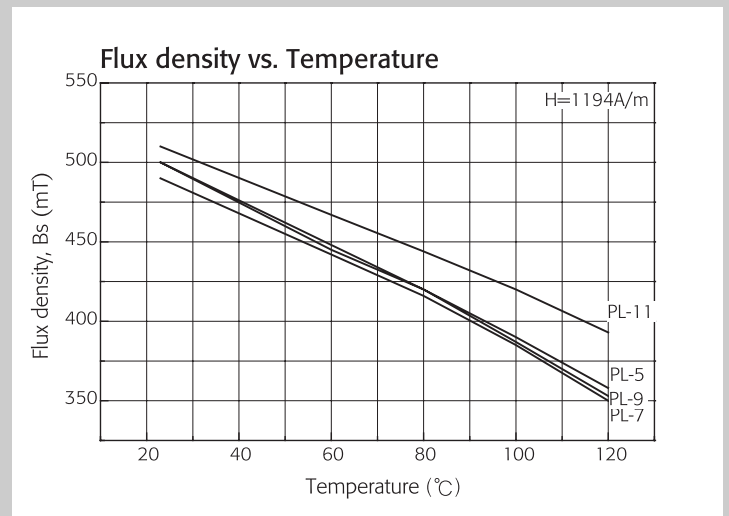
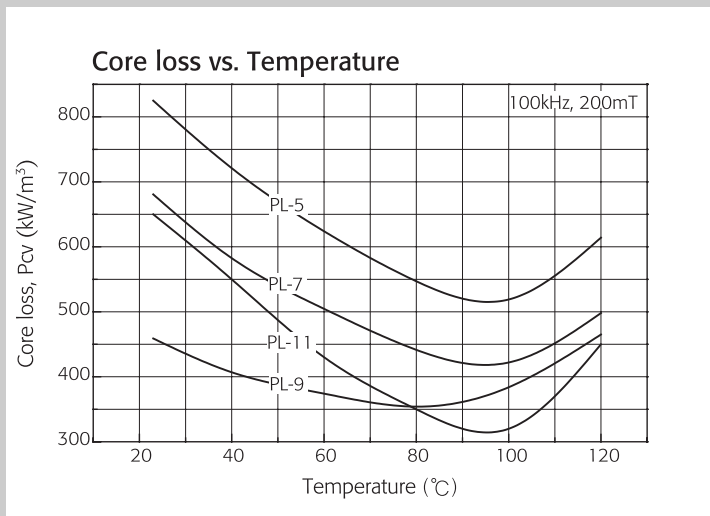


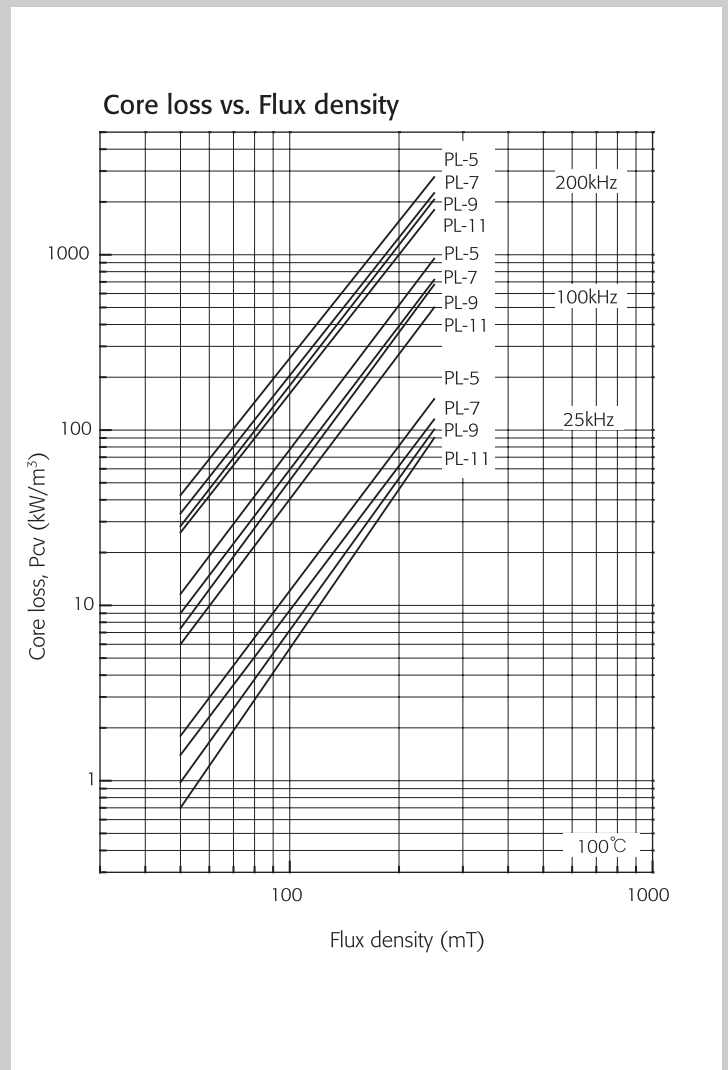
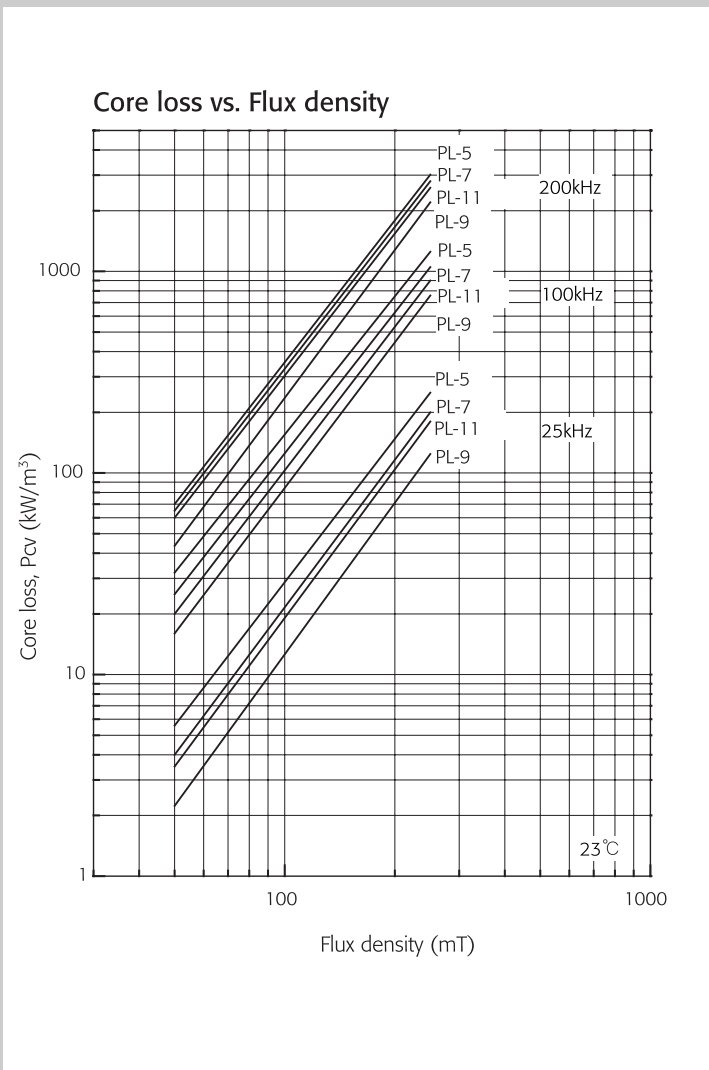
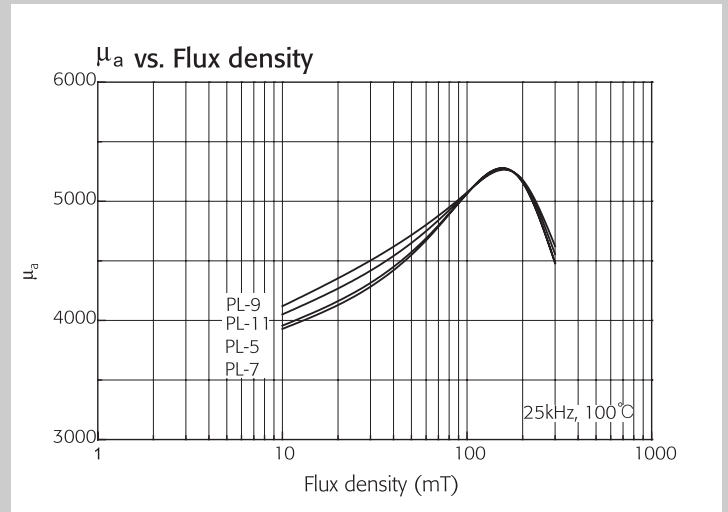
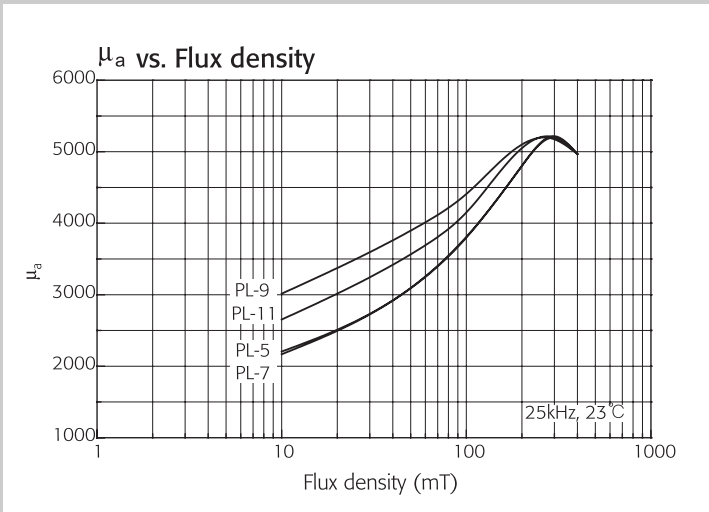
MATERIAL CHARACTERISTICS

Power Materials

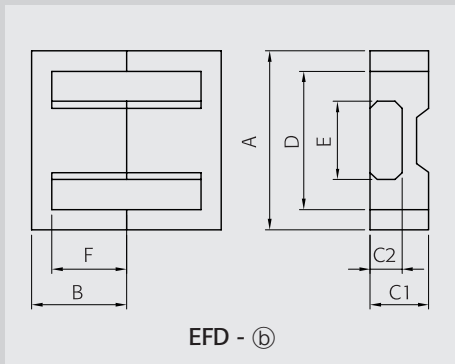
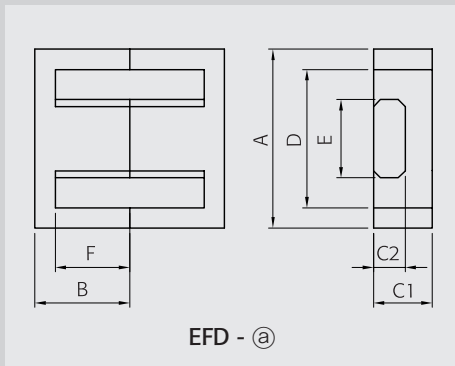
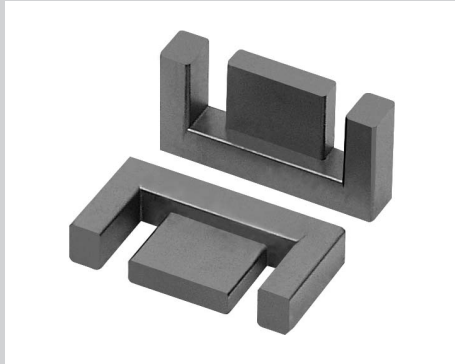
Materials			PL-5	PL-7	PL-9	PL-11	
Initial permeability	μ_{iac}		2400±25%	2400±25%	3000±25%	2500±25%	
Core loss (100kHz, 200mT)	P _{cv}	kW/m ³	23°C	800	650	450	650
			80°C	550	450	350	350
			100°C	500	410	390	320
Saturation flux density (1194A/m)	B _s	mT	23°C	500	490	500	510
			100°C	390	380	380	420
Remanence	B _r	mT	23°C	180	150	150	130
Coercivity	H _c	A/m	23°C	15	12	10	10
Curie temperature	T _c	°C	> 220	> 220	> 220	> 220	
Density	d	kg/m ³	4.85×10^3	4.85×10^3	4.85×10^3	4.85×10^3	
Resistivity	ρ	$\Omega \cdot m$	6	5	7	5	

Note: 1) Typical values
 2) The values were obtained with toroidal cores(30×8-20H) at room temperature unless indicated otherwise.





EFD CORES



Part No.		EFD1212SP	EFD1212S	EFD1311SH	EFD1314S
Type		EFD - (b)	EFD - (b)	EFD - (b)	EFD - (b)
Dimensions in mm	A	12.50 ±0.30	12.20 ±0.20	12.80 ±0.25	12.75 ±0.25
	B	6.20 ±0.15	6.00 ±0.20	5.60 ±0.15	6.85 ±0.15
	C1	3.50 ±0.10	4.00 ±0.15	3.80 ±0.20	3.30 ±0.15
	C2	2.00 ±0.10	2.20 ±0.10	1.70 ±0.15	1.85 ±0.10
	D	9.00 ±0.25	9.40 ±0.25	10.20 ±0.25	9.00 min.
	E	5.40 ±0.15	5.15 ±0.15	5.70 ±0.20	6.00 ±0.10
	F	4.55 ±0.15	4.60 ±0.20	7.80 ±0.30	4.55 ±0.15

Core Set Parameters	C1(mm ³)	2500	2500	2550	2520
	Le(mm)	28.5	28.0	25.8	29.2
	Ae(mm ²)	11.4	11.2	10.1	11.6
	Ve(mm ³)	325	315	260	339
	Ac(mm ²)	10.7	11.3	9.7	11.0
	Aw(mm ²)	16.4	19.6	17.6	15.0
	W(g/set)	1.6	1.5	1.0	1.6

Electrical Characteristics ⁽¹⁾⁽²⁾	AL value	PL-7	840	710	870	820
		PL-9	1060	1050	1090	1025
		PL-11	870	740	900	850
	Core loss	PL-7	0.21	0.19	0.16	0.19
		PL-9	0.18	0.18	0.15	0.17
		PL-11	0.18	0.18	0.15	0.17

Note : 1) Core loss

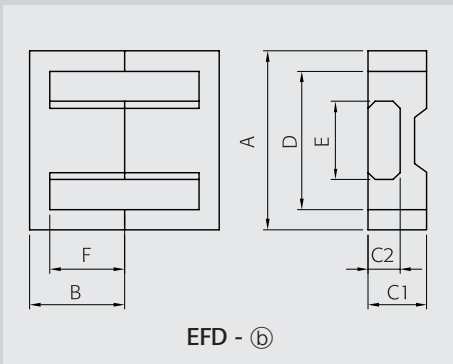
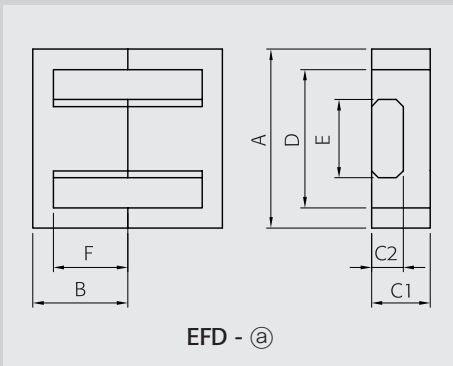
- Unit : Watt max.
- Measuring conditions
 - PL-7, PL-11 : 100 kHz, 200 mT, at 100°C
 - PL-9 : 100 kHz, 200 mT, at 80°C

2) AL value

- Unit : nH/N²
- Measuring conditions : 1 kHz, 0.1 V, 100Ts, at 23°C
- Tolerance: ±25%

		EFD1318S	EFD1515S	EFD1614SH	EFD1618S	EFD1715S	EFD1820S	EFD1822S	EFD2020S	EFD2023S
		EFD - (a)	EFD - (b)	EFD - (a)	EFD - (b)	EFD - (a)	EFD - (a)	EFD - (a)	EFD - (b)	EFD - (b)
A		13.60 ±0.30	15.00 ±0.40	16.00 ±0.30	16.40 ±0.30	16.90 ±0.30	17.70 ±0.30	17.70 ±0.30	20.00 ±0.55	20.00 ±0.55
B		8.80 ±0.15	7.50 ±0.15	7.20 ±0.15	9.00 ±0.20	7.45 ±0.20	10.10 ±0.20	10.90 ±0.20	10.00 ±0.15	11.50 ±0.15
C1		3.70 ±0.20	4.65 ±0.15	4.80 ±0.20	4.50 ±0.15	5.50 ±0.20	5.60 ±0.15	5.60 ±0.15	6.65 ±0.15	6.65 ±0.15
C2		2.00 ±0.15	2.40 ±0.10	2.40 ±0.15	2.35 ±0.10	2.90 ±0.10	3.40 ±0.10	3.40 ±0.10	3.60 ±0.15	3.60 ±0.15
D		10.10 ±0.25	11.00 ±0.35	12.50 ±0.30	12.60 min.	12.80 min.	13.10 min.	13.10 min.	15.40 ±0.50	15.40 ±0.50
E		6.00 ±0.15	5.30 ±0.15	6.00 ±0.20	6.70 ±0.15	7.30 ±0.15	7.50 ±0.15	7.50 ±0.15	8.90 ±0.20	8.90 ±0.20
F		7.00 ±0.15	5.50 ±0.25	5.20 ±0.20	7.30 ±0.20	5.45 ±0.15	7.80 ±0.20	8.60 ±0.20	7.70 ±0.20	9.20 ±0.20
C1(mm⁻¹)		3.070	2.270	2.140	2.400	1.740	2.020	2.140	1.520	1.710
Le(mm)		38.7	34.0	34.9	34.4	34.8	51.6	54.8	47.0	53.0
Ae(mm²)		12.6	15.0	16.3	14.3	20.0	25.6	25.6	31.0	31.0
Ve(mm³)		487	510	562	492	696	1320	1402	1460	1643
Ac(mm²)		12.0	12.7	14.4	30.2	21.2	25.5	25.5	32.0	32.0
AW(mm²)		28.7	31.4	33.8	44.5	32.7	46.0	53.6	50.0	60.5
W(g/set)		1.9	2.5	2.7	3.0	3.3	5.9	6.6	7.0	7.9
Al value	PL-7	630	890	920	840	1150	1050	990	1370	1240
	PL-9	800	1110	1145	1100	1310	1310	1250	1710	1550
	PL-11	660	920	960	900	1200	1100	1030	1400	1300
Core loss	PL-7	0.27	0.26	0.34	0.27	0.39	0.73	0.77	0.87	0.97
	PL-9	0.22	0.23	0.25	0.25	0.31	0.59	0.70	0.74	0.83
	PL-11	0.22	0.23	0.25	0.25	0.31	0.73	0.70	0.74	0.83

EFD CORES



Part No.		EFD2025N	EFD2025S	EFD2027S	EFD2121S
Type		EFD - (a)	EFD - (a)	EFD - (a)	EFD - (b)
Dimensions in mm	A	20.30 ±0.35	20.00 ±0.55	20.30 ±0.35	21.60 ±0.30
	B	12.75 ±0.25	12.50 ±0.20	13.50 ±0.25	10.40 ±0.20
	C1	6.65 $^{+0.20}_{-0.15}$	6.65 ±0.15	5.60 ±0.20	10.20 ±0.20
	C2	3.60 $^{+0.20}_{-0.15}$	3.60 ±0.15	3.40 ±0.20	6.00 ref.
	D	15.70 ±0.30	15.40 ±0.50	14.30 ±0.30	17.70 ±0.20
	E	8.90 ±0.20	8.90 ±0.20	8.90 ±0.20	7.90 ±0.20
	F	10.45 ±0.20	10.20 ±0.20	10.45 ±0.20	8.00 ±0.20

Core Set Parameters		EFD2025N	EFD2025S	EFD2027S	EFD2121S
C1(mm ²)		1.940	1.840	1.864	1.245
Le(mm)		59.7	57.0	61.5	58.6
Ae(mm ²)		30.8	31.0	33.0	47.0
Ve(mm ³)		1840	1767	2030	2752
Ac(mm ²)		14.4	32.0	30.3	47.0
Aw(mm ²)		33.8	66.3	56.4	78.4
W(g/set)		9.0	8.5	10	13

Electrical Characteristics ⁽¹⁾⁽²⁾	AL value	PL-7	1100	1150	1130	1500
		PL-9	1360	1450	1400	2110
		PL-11	1100	1200	1200	1600
	Core loss	PL-7	0.92	0.98	1.12	1.40
		PL-9	0.83	0.89	1.02	1.24
		PL-11	0.83	0.89	1.02	1.24

Note : 1) Core loss

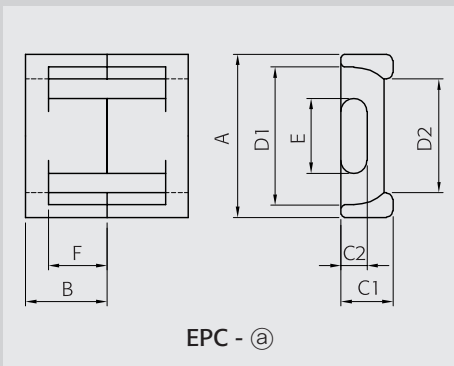
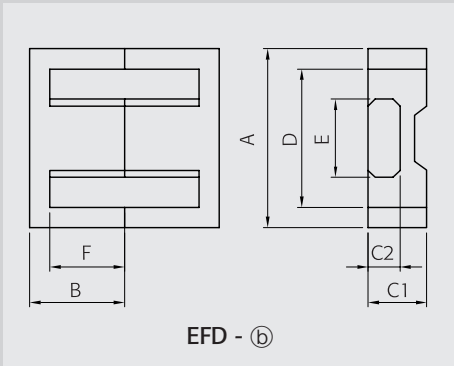
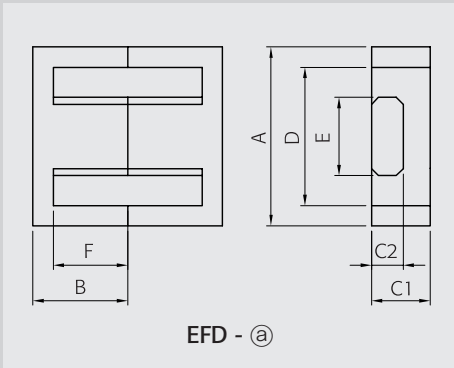
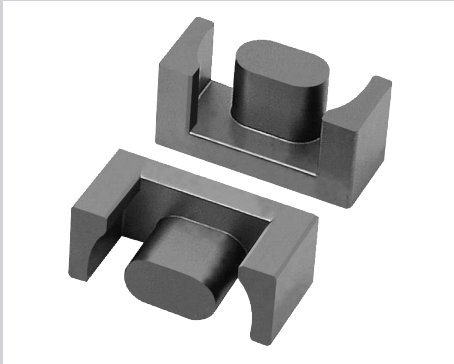
- Unit : Watt max.
- Measuring conditions
- PL-7, PL-11 : 100 kHz, 200 mT, at 100°C
- PL-9 : 100 kHz, 200 mT, at 80°C

2) AL value

- Unit : nH/N²
- Measuring conditions : 1 kHz, 0.1 V, 100Ts, at 23°C
- Tolerance: ±25%

		EFD2124L	EFD2124S	EFD2125L	EFD2322SH	EFD2525S	EFD2525V	EFD2625S	EFD2632SH	EFD2726SH
		EFD - (b)	EFD - (a)	EFD - (b)	EFD - (a)	EFD - (b)	EFD - (a)	EFD - (b)	EFD - (a)	EFD - (b)
A		21.20 ±0.40	20.80 ±0.35	21.20 ±0.40	22.70 ±0.30	25.00 ±0.65	25.05 ±0.75	26.00 ±0.55	25.50 ±0.35	27.40 ±0.40
B		12.10 ±0.20	12.10 ±0.10	12.50 ±0.20	11.00 ±0.15	12.50 ±0.15	12.60 ±0.20	12.60 ±0.15	15.75 ±0.20	13.00 ±0.20
C1		5.90 ±0.15	4.50 ±0.20	5.90 ±0.15	10.00 ±0.20	9.10 ±0.20	12.45 ±0.25	9.10 ±0.20	9.00 ±0.25	9.20 ±0.20
C2		3.30 ±0.10	2.95 ±0.15	3.30 ±0.10	6.85 ±0.15	5.20 ±0.15	8.30 ±0.30	5.20 ±0.15	7.00 ±0.20	5.00 ±0.15
D		15.80 min.	15.00 ±0.30	15.80 min.	16.75 ±0.25	18.70 ±0.60	19.20 ±0.40	19.40 ±0.50	18.70 min.	21.2 ^{+0.40} _{-0.30}
E		9.40 ±0.20	8.40 ±0.20	9.40 ±0.20	7.35 ±0.15	11.40 ±0.20	8.80 ±0.25	11.40 ±0.20	8.00 ±0.20	12.3 ^{+0.20} _{-0.30}
F		9.30 ±0.15	9.20 ±0.15	9.70 ±0.15	7.40 ±0.15	9.30 ±0.25	9.55 ±0.25	9.30 ±0.25	12.30 ±0.20	8.60 ±0.20
C1(mm⁻¹)		1.820	2.180	1.830	0.867	0.980	0.810	0.973	1.237	0.934
Le(mm)		57.0	52.1	57.2	50.4	57.0	60.0	58.4	72.0	58.3
Ae(mm²)		31.3	23.9	31.3	58.0	58.0	73.0	60.0	58.2	62.4
Ve(mm³)		1783	1245	1790	2930	3300	4300	3500	4400	3637
Ac(mm²)		31.0	24.8	31.0	50.0	60.0	73.0	59.0	56.0	61.3
AW(mm²)		60.7	60.7	66.0	70.0	70.0	91.7	74.4	131.6	77.4
W(g/set)		9.0	6.0	9.1	14	14	21	17	21	17
Al value	PL-7	1200	970	1170	2200	2250	2700	2300	1500	1800
	PL-9	1450	1210	1450	3045	2800	3350	2875	2225	2950
	PL-11	1300	1000	1200	2300	2300	2800	2400	1600	1900
Core loss	PL-7	0.98	0.70	1.00	1.60	1.65	2.60	1.93	2.42	2.00
	PL-9	0.90	0.56	0.91	1.47	1.50	2.25	1.75	2.20	1.82
	PL-11	0.90	0.56	0.91	1.47	1.50	2.60	1.75	2.20	1.82

EFD, EPC CORES



Part No.		EFD2828SH	EFD3030S	EFD3033V	EFD3130S
Type		EFD - (a)	EFD - (b)	EFD - (b)	EFD - (b)
Dimensions in mm	A	28.40 ±0.50	30.00 ±0.80	29.70 ±0.80	30.90 ±0.80
	B	14.10 ±0.20	15.00 ±0.15	16.40 ±0.30	15.00 ±0.15
	C1	11.10 ±0.25	9.10 ±0.25	12.50 ±0.40	9.10 ±0.25
	C2	6.50 ±0.25	4.90 ±0.15	8.20 ±0.30	4.90 ±0.15
	D	21.80 min.	22.40 ±0.75	22.10 ±0.50	23.30 ±0.50
	D2				
	E	12.7 ^{+0.20} / _{-0.25}	14.60 ±0.25	11.60 ±0.30	14.60 ±0.25
F	9.50 ±0.20	11.20 ±0.30	11.90 ±0.30	11.20 ±0.30	

Core Set Parameters	C1(mm ³)	0.760	0.990	0.750	0.990
	Le(mm)	59.2	68.0	73.0	68.2
	Ae(mm ²)	77.9	69.0	97.0	69.1
	Ve(mm ³)	4610	4700	7100	4712
	Ac(mm ²)	82.5	71.0	95.0	71.5
	AW(mm ²)	90.2	87.4	125.0	97.4
	W(g/set)	22	24	35	27

Electrical Characteristics ⁽¹⁾⁽²⁾	AL value	PL-7	2700	1950	3020	1800
		PL-9	3475	2500	3775	2400
		PL-11	2800	2000	3100	1900
	Core loss	PL-7	2.54	2.60	3.75	2.60
		PL-9	2.30	2.35	3.50	2.36
		PL-11	2.30	2.35	3.50	2.36

Note : 1) Core loss

- Unit : Watt max.
- Measuring conditions
- PL-7, PL-11 : 100 kHz, 200 mT, at 100°C
- PL-9 : 100 kHz, 200 mT, at 80°C

2) AL value

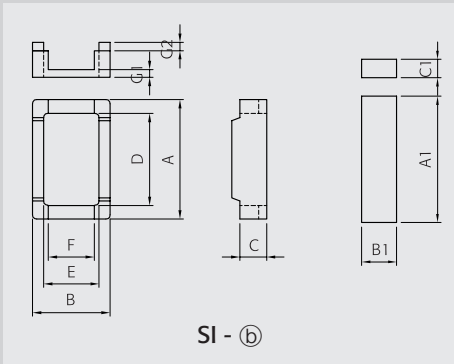
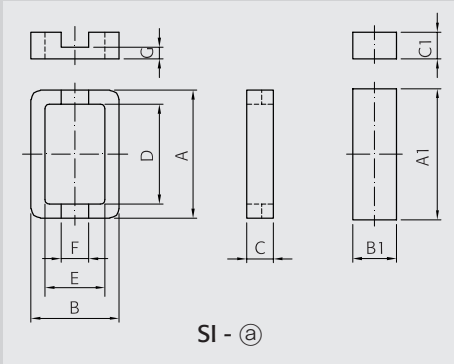
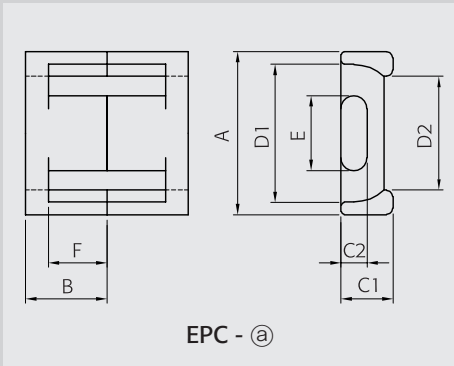
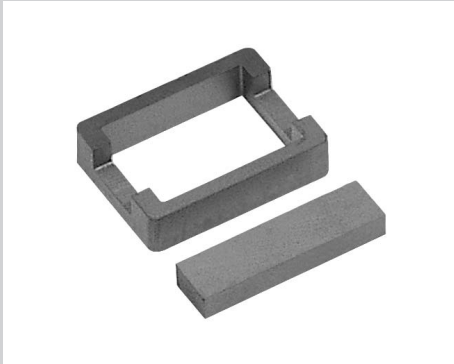
- Unit : nH/N²
- Measuring conditions : 1 kHz, 0.1 V, 100Ts, at 23°C
- Tolerance: ±25%

	EFD5050S	EPC1008S	EPC1211S	EPC1313S	EPC1715N	EPC1717S	EPC1720SH	EPC1826W	EPC1920N
	EFD - (a)	EPC - (a)	EPC - (a)	EPC - (a)	EPC - (a)	EPC - (a)	EPC - (a)	EPC - (a)	EPC - (a)
A	50.00 ±0.50	10.20 ±0.20	12.60 ±0.30	13.30 ±0.30	17.60 ±0.40	17.60 ±0.40	16.85 ±0.35	18.50 ±0.30	19.60 ±0.50
B	25.00 ±0.30	4.05 ±0.10	5.82 ±0.06	6.60 ±0.20	7.60 ±0.20	8.55 ±0.20	9.85 ±0.15	13.20 ±0.15	9.75 ±0.20
C1	10.00 ±0.30	3.40 ±0.10	3.4 ^{+0.10} _{-0.15}	4.60 ±0.15	6.00 ±0.15	6.00 ±0.15	4.00 ±0.20	4.25 ±0.15	6.00 ±0.20
C2	6.00 ±0.20	1.90 ±0.10	2.39 ±0.09	2.05 ±0.10	2.80 ±0.10	2.80 ±0.10	2.60 ±0.15	2.75 ±0.15	2.40 ±0.15
D (D1)	35.00 min.	7.60 min.	8.95 ±0.15	10.50 min.	14.30 min.	14.30 min.	13.80 ±0.30	13.10 min.	16.40 ±0.50
D2		5.30 min.	7.47 ±0.15	8.30 min.	12.00 ±0.50	12.00 ±0.50	12.40 ±0.30	10.70 min.	13.40 ±0.50
E	23.00 ±0.30	5.00 ±0.10	6.05 ±0.15	5.60 ±0.15	7.70 ±0.15	7.70 ±0.15	8.20 ±0.20	9.10 ±0.15	8.30 ±0.20
F	17.00 ±0.30	2.65 ±0.10	3.35 ±0.10	4.50 ±0.20	5.40 ±0.20	6.05 ±0.20	7.35 ±0.15	10.30 ±0.15	7.25 ±0.20

C1(mm³)	0.680	1.890	1.480	2.460	1.650	1.760	2.563	2.630	1.890
Le(mm)	103.3	17.8	21.5	30.6	37.6	40.2	41.7	62.0	43.3
Ae(mm²)	151.5	9.4	14.5	12.5	22.8	22.8	16.3	23.6	23.0
Ve(mm³)	15463	167	310	382	857	917	679	1460	996
Ac(mm²)	138.0	8.7	11.0	8.7	19.9	19.9	13.8	15.8	19.3
AW(mm²)	221.0	7.7	9.8	23.0	38.0	41.1	41.2	44.3	59.5
W(g/set)	90	1.0	1.5	1.9	4.3	4.5	3.5	7.6	5.1

Al value	PL-7	3100	1000	1150	870	1300	1200	830	1050	1200
	PL-9	3900	1250	1440	1090	1625	1500	1040	1150	1500
	PL-11	3200	1000	1200	900	1400	1300	900	1100	1300
Core loss	PL-7	10.00	0.10	0.19	0.23	0.51	0.55	0.41	0.80	0.60
	PL-9	8.00	0.90	0.16	0.19	0.43	0.46	0.34	0.75	0.50
	PL-11	8.00	0.90	0.16	0.19	0.43	0.46	0.34	0.75	0.50

EPC, SI CORES



Part No.		EPC1920S	EPC2228S	EPC2525S	EPC2728SH
Type		EPC - (a)	EPC - (a)	EPC - (a)	EPC - (a)
Dimensions in mm	A	19.10 ±0.50	21.90 ±0.30	25.10 ±0.50	26.80 ±0.40
	A1				
	B	9.75 ±0.20	14.20 ±0.20	12.50 ±0.20	14.00 ±0.20
	B1				
	C				
	C1	6.00 ±0.15	7.30 ±0.20	8.00 ±0.20	10.8 ^{+0.20} _{-0.30}
	C2	2.50 ±0.10	4.15 ±0.15	4.00 ±0.10	6.20 ±0.20
	D (D1)	15.80 min.	16.90 ±0.20	20.65 min.	22.80 ±0.40
	D2	13.60 ±0.50	14.80 min.	17.50 ±0.50	18.00 ±0.50
	E	8.50 ±0.15	9.50 ±0.15	11.50 ±0.20	13.30 ^{+0.20} _{-0.25}
	F	7.25 ±0.20	11.55 ±0.15	9.00 ±0.30	9.80 ±0.20
	G (G1)				
	G2				

Core Set Parameters	C1(mm³)	2.030	1.380	1.270	0.762
	Le(mm)	46.1	50.8	59.2	64.0
	Ae(mm²)	22.7	36.7	46.4	84.0
	Ve(mm³)	1047	1864	2747	5376
	Ac(mm²)	20.0	39.0	42.6	76.5
	Aw(mm²)	54.4	83.0	90.3	93.1
	W(g/set)	5.4	9.0	13	26

Electrical Characteristics⁽¹⁾⁽²⁾	AL value	PL-7	1090	1500	1600	2600
		PL-9	1360	1900	2000	3250
		PL-11	1130	1600	1700	2700
	Core loss	PL-7	0.63	1.10	1.65	3.23
		PL-9	0.52	1.00	1.37	2.69
		PL-11	0.52	1.00	1.37	2.69

Note : 1) Core loss

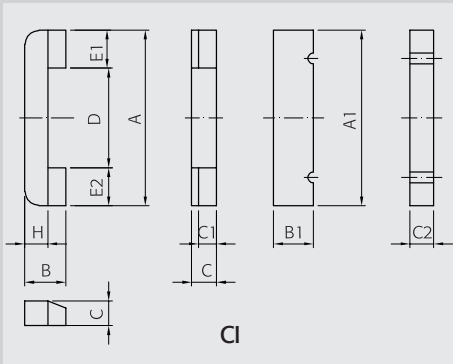
- Unit : Watt max.
- Measuring conditions
- PL-7, PL-11 : 100 kHz, 200 mT, at 100°C
- PL-9 : 100 kHz, 200 mT, at 80°C

2) AL value

- Unit : nH/N²
- Measuring conditions : 1 kHz, 0.1 V, 100Ts, at 23°C
- Tolerance: ±25%

	EPC2732S	EPC2833SH	EPC3028SH	EPC3035S	EPC3230SH	SI1024S	SI1221N	SI1221S	SI1520A	
	EPC - (a)	EPC - (a)	EPC - (a)	EPC - (a)	EPC - (a)	SI - (b)	SI - (a)	SI - (b)	SI - (a)	
A	27.10 ±0.50	28.00 ±0.40	30.50 ±0.40	30.10 ±0.50	31.50 ±0.50	23.80 ±0.30	20.85 ±0.20	20.85 ±0.20	19.70 ±0.30	
A1						24.30 ±0.20	21.80 ±0.30	21.80 ±0.30	19.90 ±0.30	
B	16.00 ±0.20	16.50 ±0.25	14.00 ±0.25	17.50 ±0.20	15.00 ±0.25	9.80 ±0.20	11.80 ±0.25	11.80 ±0.25	14.80 ±0.30	
B1						4.40 ±0.10	5.50 ±0.20	5.50 ±0.20	5.45 ±0.15	
C						3.15 ±0.10	3.50 ±0.10	3.50 ±0.10	4.60 ±0.10	
C1	8.00 ±0.20	8.00 ±0.20	13.20 ±0.20	8.00 ±0.20	13.00 ±0.30	2.00 ±0.07	1.80 ±0.10	1.80 ±0.10	2.80 ±0.05	
C2	4.00 ±0.10	4.00 ±0.15	8.50 ±0.15	4.00 ±0.10	7.40 ±0.20					
D (D1)	21.60 min.	22.00 ±0.40	23.50 min.	23.60 min.	25.00 min.	19.20 ±0.30	16.20 ±0.15	16.20 ±0.15	15.60 ±0.30	
D2	19.00 ±0.50	15.00 ref.	18.00 min.	20.00 ±0.50	19.50 min.					
E	13.00 ±0.30	13.0 ±0.25	14.50 ±0.15	15.00 ±0.30	13.00 ±0.30	7.30 $^{+0.10}_{-0.15}$	8.90 ±0.20	8.90 ±0.20	11.40 ±0.25	
F	12.00 ±0.30	12.00 ±0.20	9.10 ±0.20	13.00 ±0.30	11.00 ±0.20	5.70 max.	7.10 $^{+0}_{-0.20}$	7.10 $^{+0}_{-0.20}$	7.00 ±0.10	
G (G1)						1.30 ±0.10	1.20 ±0.10	1.20 ±0.10	1.85 ±0.05	
G2						0.40 ref.		0.50 max.		
C1(mm ³)	1.426	1.366	5.539	1.320	0.813	5.340	3.880	3.880	3.290	
Le(mm)	70.1	70.6	60.6	81.6	73.0	46.6	41.9	41.9	46.0	
Ae(mm ²)	49.1	51.7	109.4	61.0	89.8	8.7	10.8	10.8	14.0	
Ve(mm ³)	3808	3650	6627	5035	6556	406	453	453	644	
Ac(mm ²)	48.6	48.6	101.3	56.6	83.6	8.8	10.1	10.1	15.3	
AW(mm ²)	108.0	108.0	86.5	117.0	137.6	51.8	27.5	27.5	46.4	
W(g/set)	18	18	32	24	32	2.0	2.2	2.2	3.2	
AL value	PL-7	1540	1500	3700	1640	2600	340	530	530	500
	PL-9	1925	1875	4625	2050	3250	420	680	680	630
	PL-11	1600	1600	3900	1700	2700	360	550	550	520
Core loss	PL-7	2.28	2.19	3.98	3.02	3.93	0.25	0.30	0.30	0.45
	PL-9	1.90	1.83	3.31	2.52	3.28	0.22	0.27	0.27	0.41
	PL-11	1.90	1.83	3.31	2.52	3.28	0.22	0.27	0.27	0.41

CI CORES



Part No.		CI8.0	CI8.5
Type		CI	CI
Dimensions in mm	A	28.80 ±0.50	28.80 ±0.50
	A1	29.50 ±0.50	29.50 ±0.50
	B	3.50 ±0.075	3.50 ±0.075
	B1	3.15 ±0.10	3.50 ±0.10
	C	2.70 ±0.20	3.20 ±0.20
	C1	2.00 ±0.15	2.40 ±0.15
	C2	1.75 ±0.05	2.20 ±0.05
	D	21.60 min.	21.60 min.
	E1	3.40 ±0.10	3.40 ±0.10
	E2	3.40 ±0.10	3.40 ±0.10
	E1-E2	±0.1	±0.1
	H	2.05 ±0.10	2.35 ±0.10

Core Set Parameters	C1(mm ⁻¹)	9.710	7.180
	Le(mm)	55.9	56.2
	Ae(mm ²)	5.8	7.8
	Ve(mm ³)	322	440
	Ac(mm ²)	5.5	7.7
	Aw(mm ²)	31.9	25.3
	W(g/set)	2.2	2.6

Electrical Characteristics ⁽¹⁾⁽²⁾	AL value	PL-7	220	300
		PL-9	270	370
		PL-11	200	300
	Core loss	PL-7	0.06	0.07
		PL-9	0.05	0.06
		PL-11	0.05	0.06

Note : 1) Core loss

- Unit : Watt max.
- Measuring conditions
 - PL-7, PL-11 : 25 kHz, 200 mT, at 100°C
 - PL-9 : 25 kHz, 200 mT, at 80°C

2) AL value

- Unit : nH/N²
- Measuring conditions : 1 kHz, 0.1 V, 100Ts, at 23°C
- Tolerance: ±25%