



Green Solutions

AC/DC Controller



Hi-Voltage Start-Up Green Mode PWM Controller

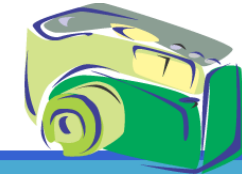
Part Number	Hi-V Start-Up Current	UVLO ON (V)	UVLO OFF (V)	VCC Max. (V)	Driving Capacity (mA)	Switching Frequency	Internal Slop Comp.	Protection						FM Jittering	Precision Brownout Control	Package
								OCP	OVP	OLP	OTP	Latch	Soft-Start			
LD7575 PS/PN	1mA	16.0	10.0	30	500	Adj.	Yes	Yes	Yes	Yes	-	-	-	-	-	SOP-8/ DIP-8

Green Mode PWM Controller

Part Number	Start-Up Current Max.	UVLO ON (V)	UVLO OFF (V)	VCC Max. (V)	Driving Capacity (mA)	Switching Frequency	Internal Slop Comp.	Protection						FM Jittering	Precision Brownout Control	Package
								OCP	OVP	OLP	OTP	Latch	Soft-Start			
LD7530/A PL/PN	20 μ A	16.0	10.0	30	300	65KHz fixed	Yes	Yes	Yes	Yes	-	-	-	Yes	-	SOT-26, DIP-8
LD7535/A PL/PN	20 μ A	16.0	10.0	30	300	Adj.	Yes	Yes	Yes	Yes	-	-	-	-	-	SOT-26/ DIP-8
LD7550B BL/BN	20 μ A	16.0	10.0	36	300	Adj.	Yes	Yes	Yes	-	-	-	-	-	-	SOT-26/ DIP-8
LD7522 PS/PN	35 μ A	16.0	10.0	30	500	65KHz fixed	Yes	Yes	Yes	Yes	Yes	Yes	Yes	-	Yes	SOP-8/ DIP-8
LD7520 PS/PN	35 μ A	16.0	10.0	30	500	65KHz fixed	Yes	Yes	Yes	Yes	Yes	Yes	Yes	-	-	SOP-8/ DIP-8
LD7552B PS/PN	20 μ A	16.0	10.0	30	500	Adj.	Yes	Yes	Yes	Yes	-	-	-	-	-	SOP-8, DIP-8
LD7552 BS/BN	25 μ A	16.0	11.4	36	500	Adj.	Yes	Yes	-	-	-	-	-	-	-	SOP-8/ DIP-8

CC/CV Controller

Part Number	No. of OP AMP	No. of V _{REF}	Max. VCC (V)	V _{REF} (V)	V _{REF} Tolerance (%)	V _{REF} Bias V _{CURRENT} (mA)	Package
LD8103 PS	2	1	27	2.5	±0.7%	1~100	SOP-8



DC/DC Controller

Single Synchronous Buck PWM Controller

Part Number	V _{IN}	V _{CC}	Freq.	Linear Controller	Synchronous Rectifier	Package
LD7120 PS	5V	5V	300KHz	No	Yes	SOP-8
LD7129 PS	3.3V/5V	5V/12V	600KHz	Yes	Yes	SOP-14

Photoflash Capacitor Charger

Part Number	V _{CC} MAX (V)	Shutdown Current	Auto Refresh	V _{FB} Tolerance	IGBT Driver	MAX Ton Time	Package
LD7261 PL	5.5V	100μA	Yes	±1.0%	Yes	5.5μS	MSOP-10
LD7261A PL	5.5V	<1μA	No	±1.0%	Yes	7.5μS	MSOP-10
LD7268 PL	5.5V	100μA	Yes	±1.0%	Yes	5μS	MSOP-10
LD7268A PL	5.5V	<1μA	No	±1.0%	Yes	6μS	MSOP-10

Boost Controller

WLED Driver

Part Number	V _{IN} Max.	Frequency	LED Current	LED Driving Type	Package
LD7291 PL	3.6V	210KHz	18mA	Parallel	SOT26

VFM Step up Converter

Part Number	V _{IN} Max.	Frequency	Output Voltage	Output Voltage Accuracy	Package
LD7280 PL	6.5V	120KHz	1.8V~5.0V	±2%	SOT25
LD7280 PJ	6.5V	120KHz	1.8V~5.0V	±2%	SOT89
LD7282 PL	6.5V	160KHz	1.8V~5.0V	±2%	SOT25
LD7282 PJ	6.5V	160KHz	1.8V~5.0V	±2%	SOT89



Green Solutions

Others



ACPI Controller

Part Number	Supply Current	UVP	Soft Start	Power OK	V _{DUAL} tolerance	Package
LD7301 PL	6mA	Yes	Yes	Yes	±1.5%	SSOP-20








LDO

Part Number	Input Voltage	Nominal Supply Current	Output Current Limit	Dropout Voltage	Reference Voltage Tolerance	Package
LD6902 PL	4~21V	30µA	90mA	0.25V	±2%	SOT-26

OP-AMP

Part Number	No. of OP AMP	No. of V _{REF}	Max. VCC (V)	V _{REF} (V)	V _{REF} Tolerance (%)	V _{REF} Bias V _{CURRENT} (mA)	Package
LD8104 PS	4	1	21V	2.5V	±1.0%	1~100mA	SOP-16

Package Information

SSOP-20	SOP-8 (also SOP-14, 16)	MSOP-10	SOT-26	SOT-25	SOT-89	DIP-8
						
2K/ Reel	2.5K/Reel	2.5K/Reel	3K/ Reel	3K/ Reel	3K/ Reel	3.6K/ Box

Important Notice

All above products are available for PB-free and non PB-free package.

LD reserves the right to make changes or corrections to its products at any time without notice. Customers should verify the datasheets are current and complete before placing order.