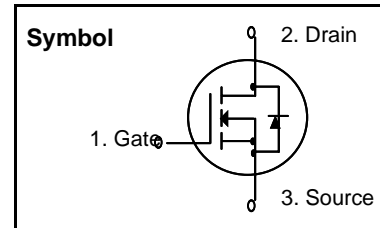


## N-Channel MOSFET

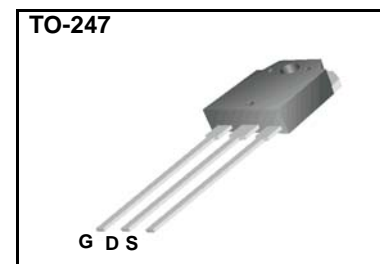
### Features

- $R_{DS(on)}$  (Max 1.1  $\Omega$ )@ $V_{GS}=10V$
- Gate Charge (Typical 70nC)
- Improved dv/dt Capability, High Ruggedness
- 100% Avalanche Tested
- Maximum Junction Temperature Range (150°C)



### General Description

This Power MOSFET is produced using Wisdom's advanced planar stripe, DMOS technology. This latest technology has been especially designed to minimize on-state resistance, have a high rugged avalanche characteristics. These devices are well suited for high efficiency switch mode power supplies.



### Absolute Maximum Ratings

Symbol	Parameter	Value	Units
$V_{DSS}$	Drain to Source Voltage	900	V
$I_D$	Continuous Drain Current(@ $T_C = 25^\circ C$ )	11	A
	Continuous Drain Current(@ $T_C = 100^\circ C$ )	6.6	A
$I_{DM}$	Drain Current Pulsed (Note 1)	44	A
$V_{GS}$	Gate to Source Voltage	$\pm 30$	V
$E_{AS}$	Single Pulsed Avalanche Energy (Note 2)	1280	mJ
$E_{AR}$	Repetitive Avalanche Energy (Note 1)	30	mJ
dv/dt	Peak Diode Recovery dv/dt (Note 3)	4.0	V/ns
$P_D$	Total Power Dissipation(@ $T_C = 25^\circ C$ )	300	W
	Derating Factor above 25 °C	2.38	W/°C
$T_{STG}, T_J$	Operating Junction Temperature & Storage Temperature	- 55 ~ 150	°C
$T_L$	Maximum Lead Temperature for soldering purpose, 1/8 from Case for 5 seconds.	300	°C

### Thermal Characteristics

Symbol	Parameter	Value			Units
		Min.	Typ.	Max.	
$R_{\theta JC}$	Thermal Resistance, Junction-to-Case	-	-	0.42	°C/W
$R_{\theta CS}$	Thermal Resistance, Case to Sink	-	0.24	-	°C/W
$R_{\theta JA}$	Thermal Resistance, Junction-to-Ambient	-	-	40	°C/W

# WFW11N90

## Electrical Characteristics (T<sub>C</sub> = 25 °C unless otherwise noted)

Symbol	Parameter	Test Conditions	Min	Typ	Max	Units
<b>Off Characteristics</b>						
BV <sub>DSS</sub>	Drain-Source Breakdown Voltage	V <sub>GS</sub> = 0V, I <sub>D</sub> = 250uA	900	-	-	V
$\frac{\Delta BV_{DSS}}{\Delta T_J}$	Breakdown Voltage Temperature coefficient	I <sub>D</sub> = 250uA, referenced to 25 °C	-	1.0	-	V/°C
I <sub>DSS</sub>	Drain-Source Leakage Current	V <sub>DS</sub> = 900V, V <sub>GS</sub> = 0V	-	-	10	uA
		V <sub>DS</sub> = 720V, T <sub>C</sub> = 125 °C	-	-	100	uA
I <sub>GSS</sub>	Gate-Source Leakage, Forward	V <sub>GS</sub> = 30V, V <sub>DS</sub> = 0V	-	-	100	nA
	Gate-source Leakage, Reverse	V <sub>GS</sub> = -30V, V <sub>DS</sub> = 0V	-	-	-100	nA
<b>On Characteristics</b>						
V <sub>GS(th)</sub>	Gate Threshold Voltage	V <sub>DS</sub> = V <sub>GS</sub> , I <sub>D</sub> = 250uA	3.0	-	5.0	V
R <sub>DS(ON)</sub>	Static Drain-Source On-state Resistance	V <sub>GS</sub> = 10 V, I <sub>D</sub> = 5.5A	-	0.90	1.1	Ω
<b>Dynamic Characteristics</b>						
C <sub>iss</sub>	Input Capacitance	V <sub>GS</sub> = 0 V, V <sub>DS</sub> = 25V, f = 1MHz	-	3000	-	pF
C <sub>oss</sub>	Output Capacitance		-	250	-	
C <sub>rss</sub>	Reverse Transfer Capacitance		-	25	-	
<b>Dynamic Characteristics</b>						
t <sub>d(on)</sub>	Turn-on Delay Time	V <sub>DD</sub> = 450V, I <sub>D</sub> = 11A, R <sub>G</sub> = 25Ω (Note 4, 5)	-	70	-	ns
t <sub>r</sub>	Rise Time		-	150	-	
t <sub>d(off)</sub>	Turn-off Delay Time		-	150	-	
t <sub>f</sub>	Fall Time		-	90	-	
Q <sub>g</sub>	Total Gate Charge	V <sub>DS</sub> = 720V, V <sub>GS</sub> = 10V, I <sub>D</sub> = 11A (Note 4, 5)	-	70	-	nC
Q <sub>gs</sub>	Gate-Source Charge		-	15	-	
Q <sub>gd</sub>	Gate-Drain Charge(Miller Charge)		-	30	-	

## Source-Drain Diode Ratings and Characteristics

Symbol	Parameter	Test Conditions	Min.	Typ.	Max.	Unit.
I <sub>S</sub>	Continuous Source Current	Integral Reverse p-n Junction Diode in the MOSFET	-	-	11	A
I <sub>SM</sub>	Pulsed Source Current		-	-	44	
V <sub>SD</sub>	Diode Forward Voltage	I <sub>S</sub> = 11A, V <sub>GS</sub> = 0V	-	-	1.4	V
t <sub>rr</sub>	Reverse Recovery Time	I <sub>S</sub> = 11A, V <sub>GS</sub> = 0V, di <sub>F</sub> /dt = 100A/us	-	1200	-	ns
Q <sub>rr</sub>	Reverse Recovery Charge		-	20	-	uC

### ※ NOTES

1. Repeatability rating : pulse width limited by junction temperature
2. L = 20mH, I<sub>AS</sub> = 11A, V<sub>DD</sub> = 50V, R<sub>G</sub> = 25Ω, Starting T<sub>J</sub> = 25°C
3. I<sub>SD</sub> ≤ 11A, di/dt ≤ 200A/us, V<sub>DD</sub> ≤ BV<sub>DSS</sub>, Starting T<sub>J</sub> = 25°C
4. Pulse Test : Pulse Width ≤ 300us, Duty Cycle ≤ 2%
5. Essentially independent of operating temperature.

## Typical Characteristics

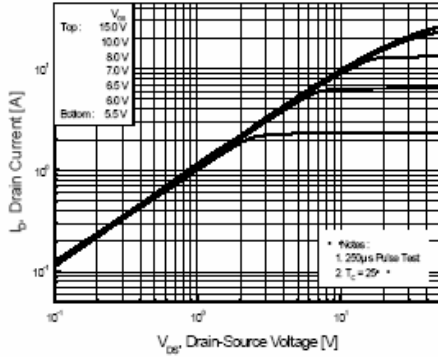


Figure 1. On-Region Characteristics

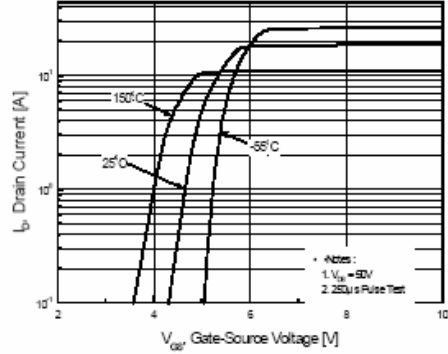


Figure 2. Transfer Characteristics

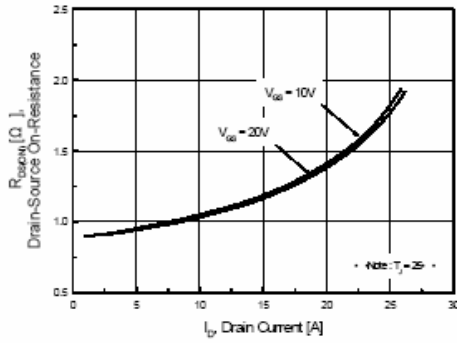


Figure 3. On-Resistance Variation vs Drain Current and Gate Voltage

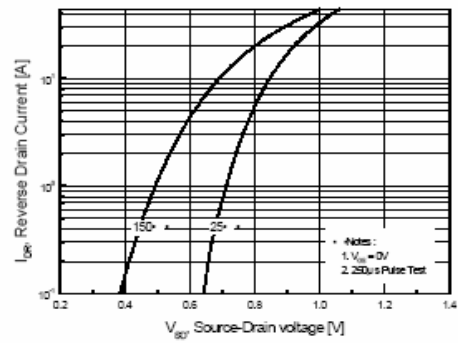


Figure 4. Body Diode Forward Voltage Variation with Source Current

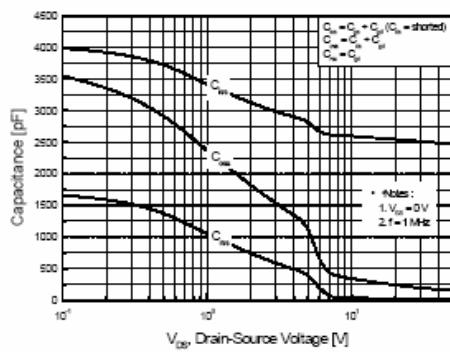


Figure 5. Capacitance Characteristics

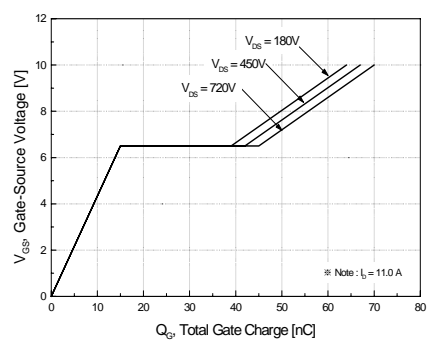


Figure 6. Gate Charge Characteristics

## Typical Characteristics (Continued)

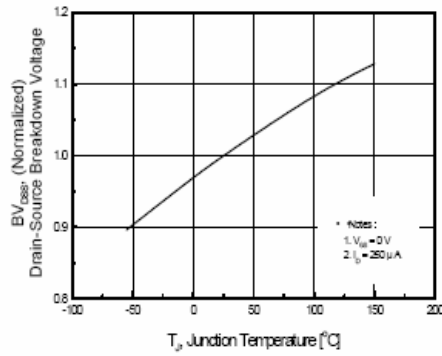


Figure 7. Breakdown Voltage Variation vs Temperature

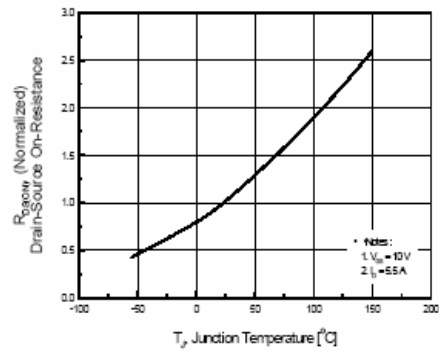


Figure 8. On-Resistance Variation vs Temperature

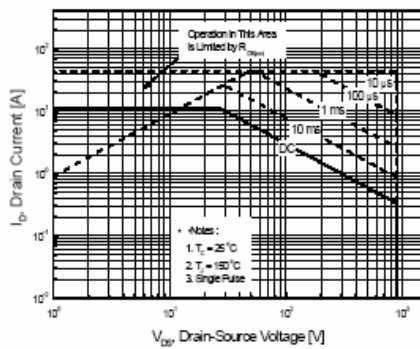


Figure 9. Maximum Safe Operating Area

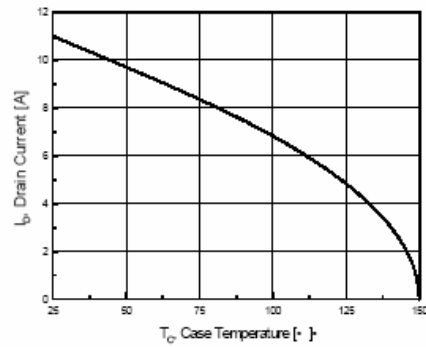


Figure 10. Maximum Drain Current vs Case Temperature

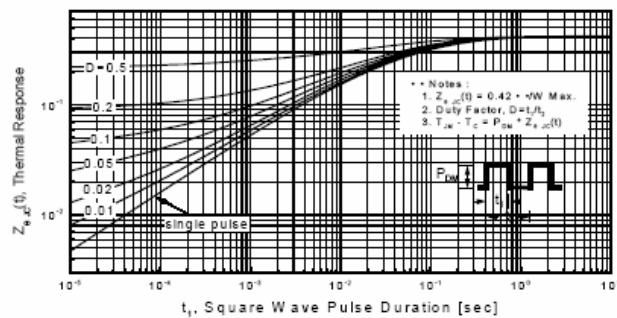
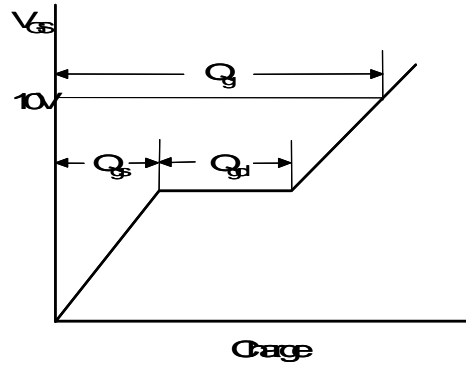
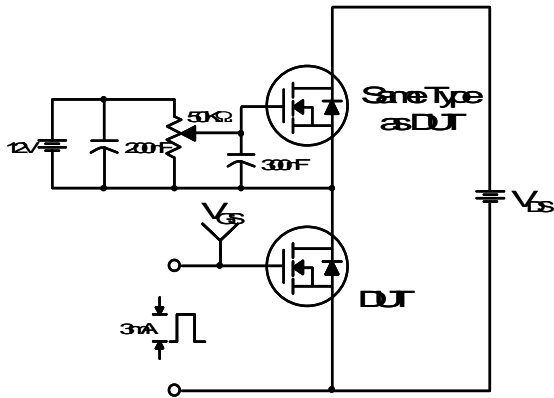
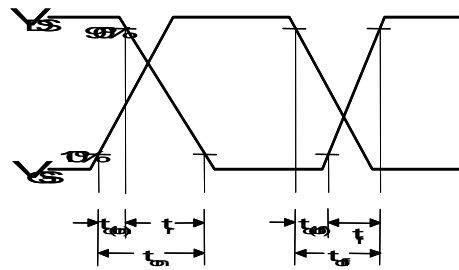
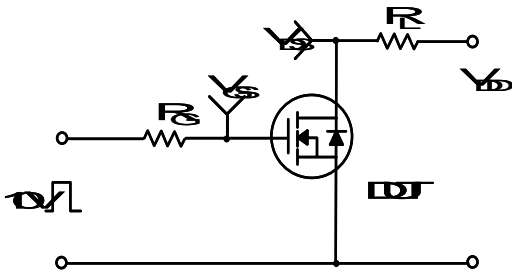


Figure 11. Transient Thermal Response Curve

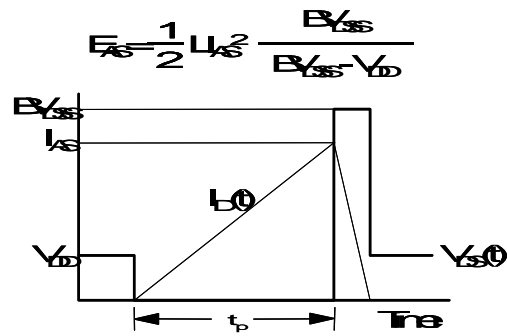
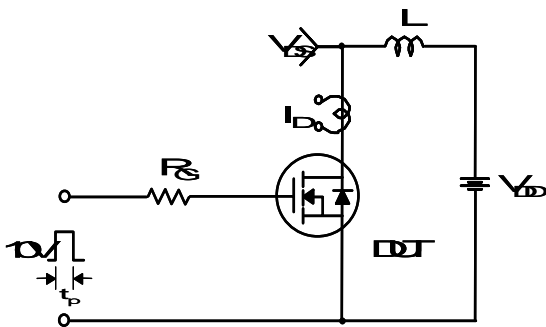
### Gate Charge Test Circuit & Waveform



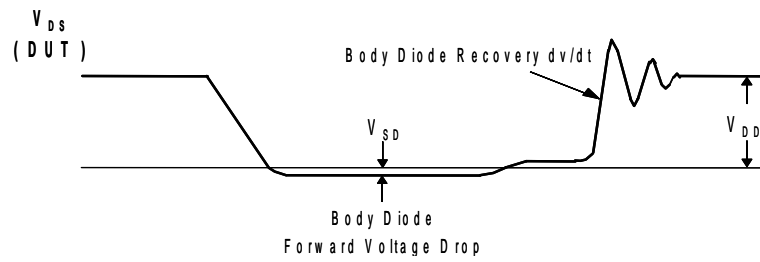
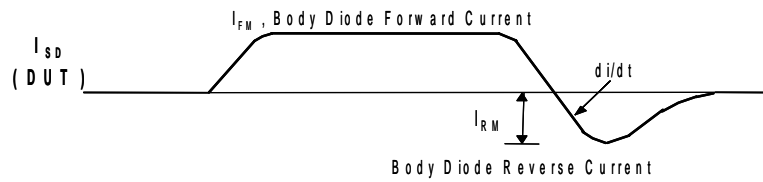
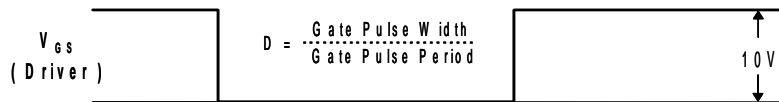
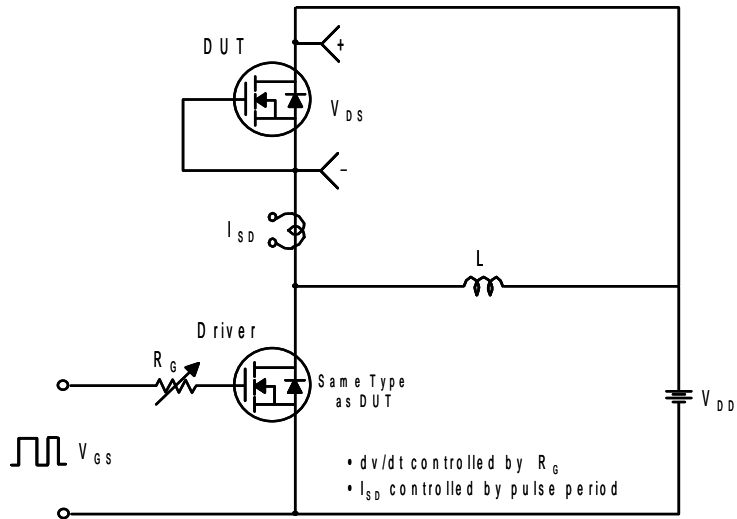
### Resistive Switching Test Circuit & Waveforms



### Unclamped Inductive Switching Test Circuit & Waveforms

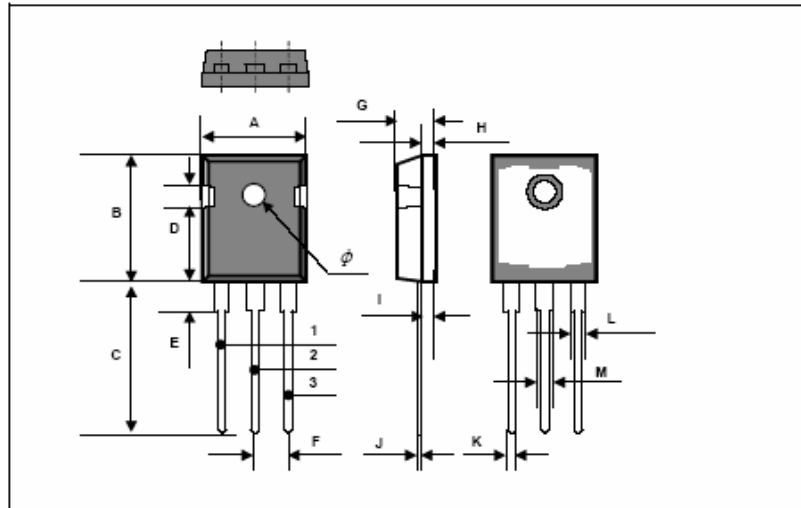


### Peak Diode Recovery dv/dt Test Circuit & Waveforms



Package Dimensions

TO-247 ( China Mingxin )

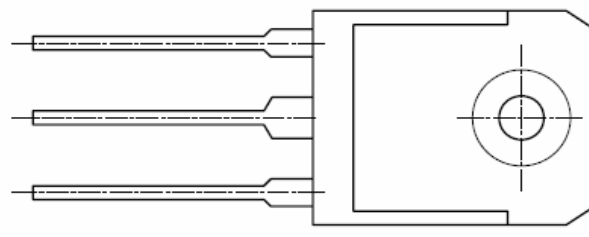
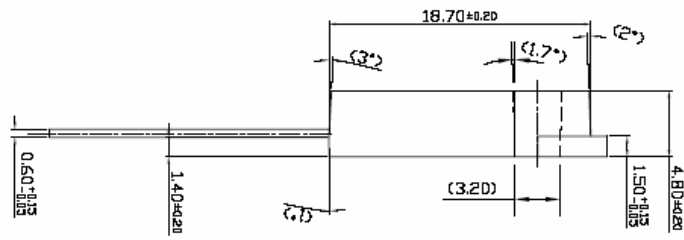
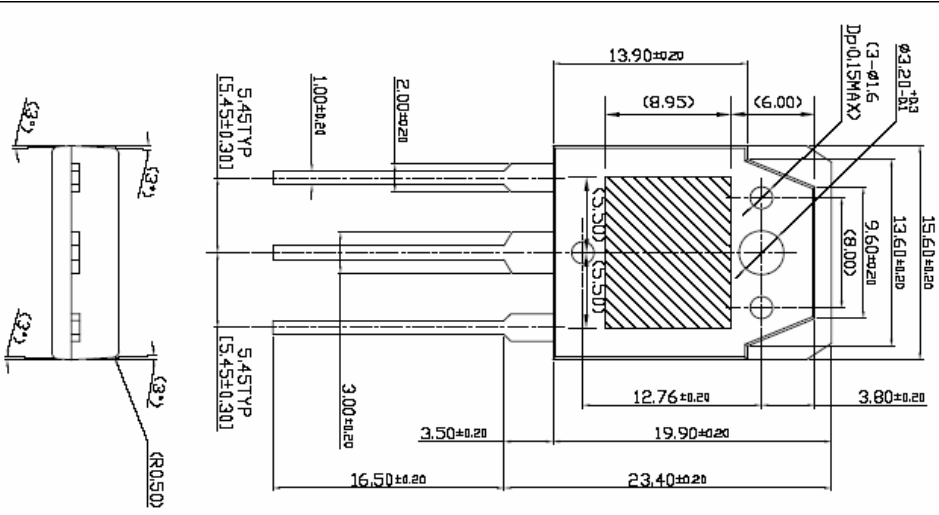


Dim.	mm			Inch		
	Min.	Typ.	Max.	Min.	Typ.	Max.
A	15.77		16.03	0.621		0.631
B	20.77		21.07	0.818		0.830
C	20.05		20.31	0.789		0.800
D	4.40		4.50	0.173		0.177
E	4.22		4.32	0.166		0.170
F	5.32		5.58	0.209		0.220
G	4.90		5.10	0.193		0.200
H	1.92		2.08	0.076		0.082
I	2.33		2.43	0.092		0.096
J		0.6			0.024	
K	1.15		1.25	0.045		0.049
L	1.95		2.05	0.077		0.081
M	2.85		3.11	0.112		0.122
$\phi$	3.65		3.75	0.144		0.148

Package Dimensions

TO-3P ( Korea SP Semi )

THIS DRAWING CONTAINS CONFIDENTIAL INFORMATION PROPERTY TO SPSEC. IT MUST NOT BE REPRODUCED OR DISCLOSED TO OTHERS OR USED IN ANY OTHER WAY IN WHOLE OR PART EXCEPT AS AUTHORIZED IN WRITING BY SPSEC.



NOTE

1. THESE DIMENSION DID NOT INCLUDE MOLD PROTRUSION
2. < > IS REFERENCE
3. 라오공치 ±1

DESIGNED BY	CHECKED BY	APPROVED BY	UNIT	mm
Y.G. SHIN	Y.H. KIM	S.Y. CHOI	TOLERANCE	±0.20
			SHEET	1 / 1
<b>SP Semi &amp; Com.</b>				