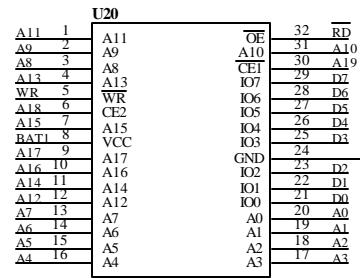
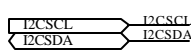
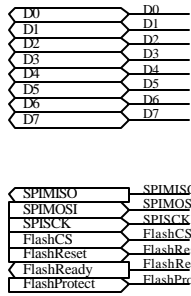
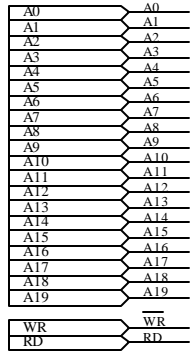


C 8051F020 CrossBar 说明

P00	TXD0	P01	RXD0	P04	MOSI	P05	
P02	SCK	P03	MISO	P06	SDA	P07	SCL
P10	TXD1	P11	RXD1	P12	CEX0	P13	CEX1
P14	CEX2/CEX3/CEX4/ECI/CP0/CP1/T0			P16	INT0		
P17	T1/INT1/T2/T2EX/T4/T4EX						

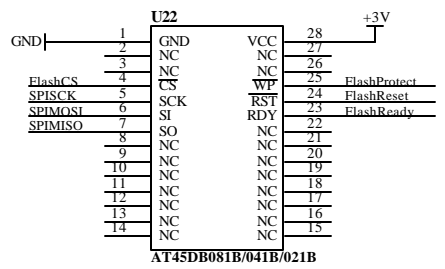
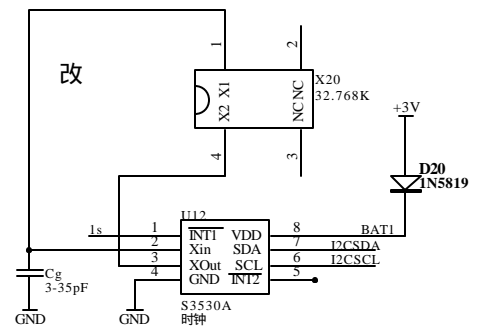
for 100pin
 VREF 输出参考电压1.2V(2.4V)
 VREFD DAC0和DAC1的参考电压
 VREF0 ADC0的参考电压(DAC0输出)
 VREFH ADC1的参考电压(AV+)
 for 64pin
 VREF 输出参考电压1.2V(2.4V)
 DAC 的参考电压
 VREFFA ADC0和ADC1的参考电压

Title		
Size	Number	Revision
A4		
Date:	19-Jan-2007	Sheet of
File:	C:\Documents and Settings\john_sun\桌面\www.Files\图纸\cp2200核心模块1	01



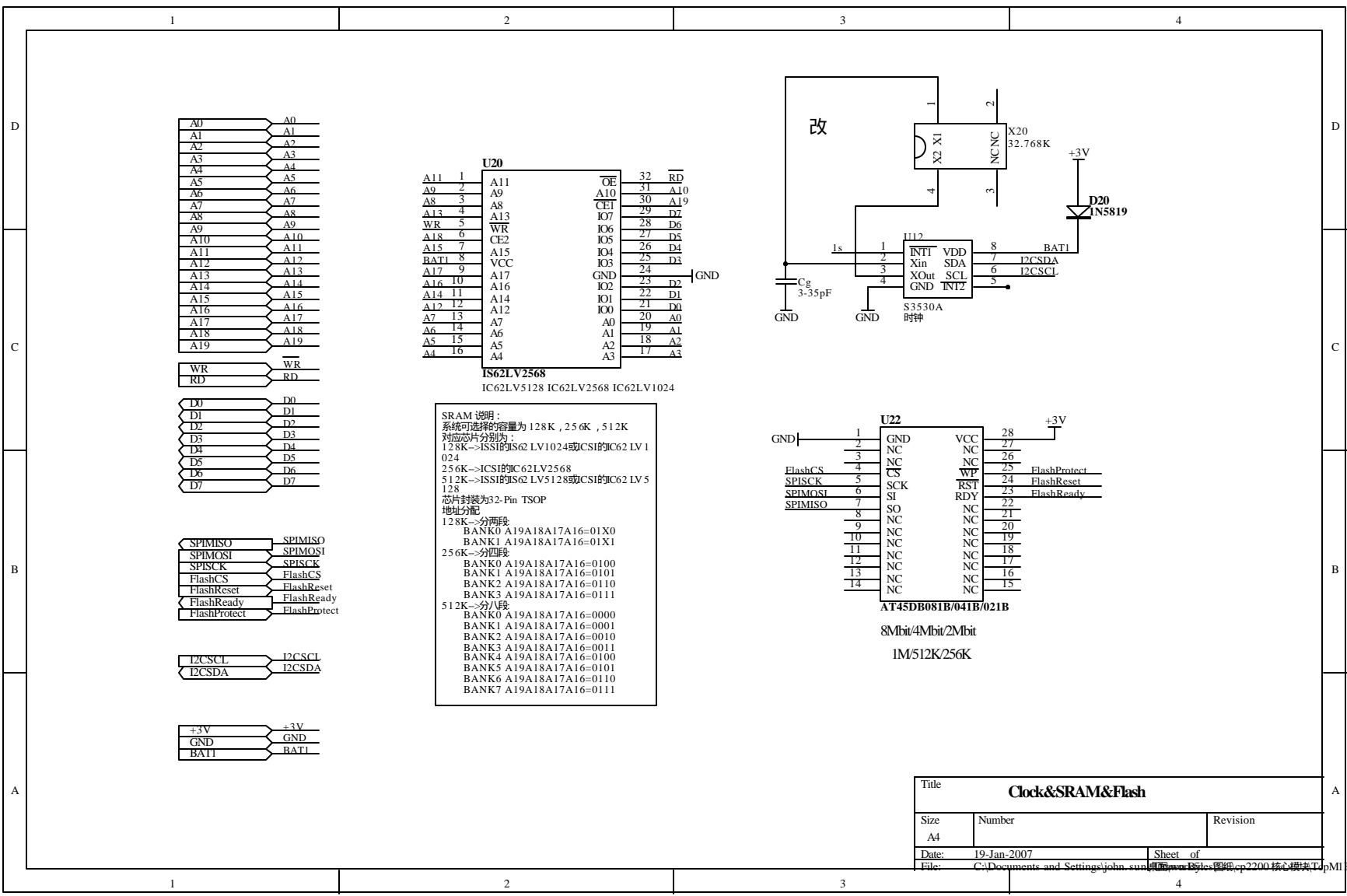
IS62LV2568
IC62LV5128 IC62LV2568 IC62LV1024

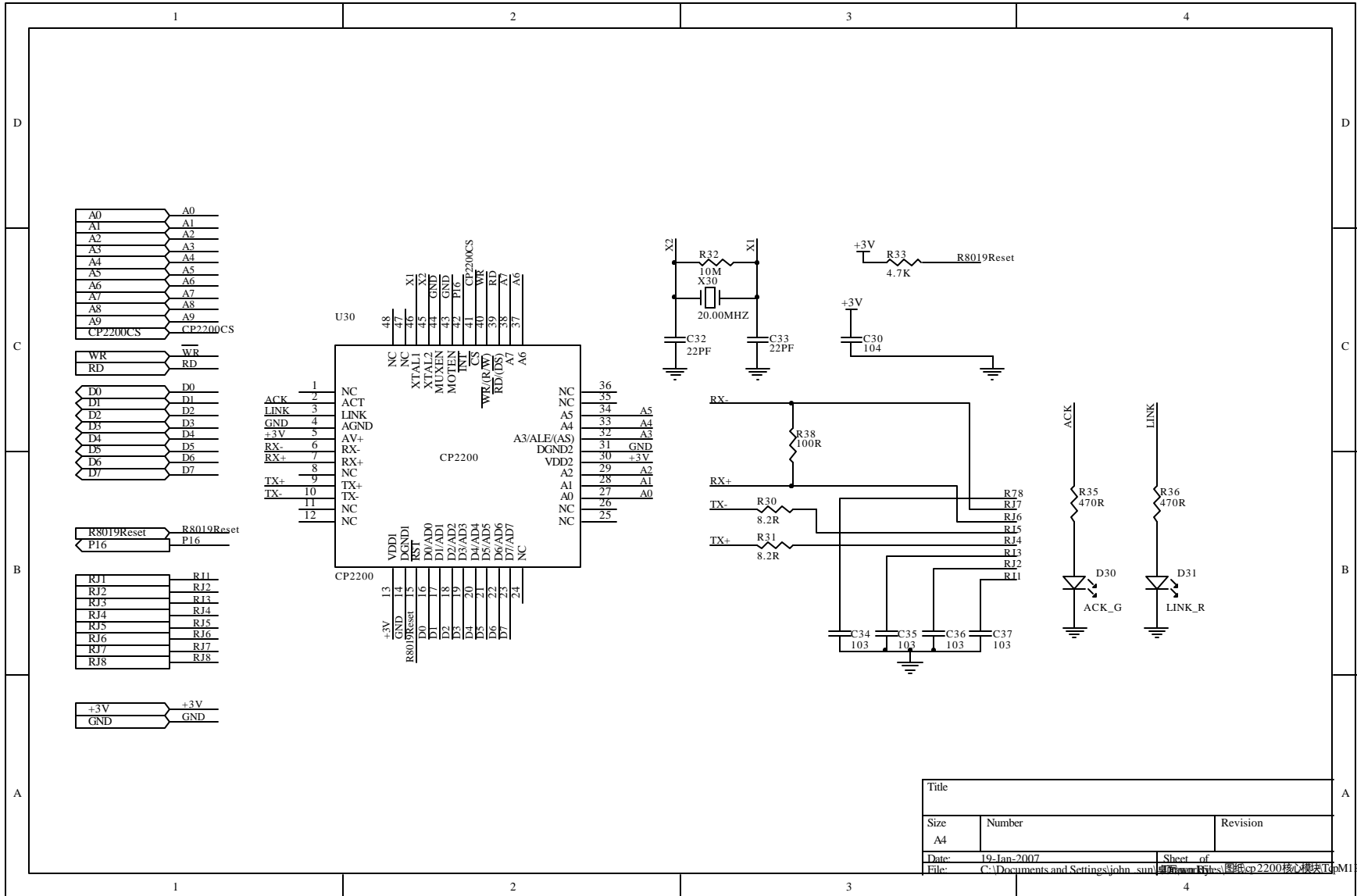
SRAM 说明:
系统可选择的容量为 128K, 256K, 512K
对应芯片分别为:
128K-->ISSI的IS62LV1024或CSI的IC62LV1024
256K-->ICSI的IC62LV2568
512K-->ISSI的IS62LV5128或CSI的IC62LV5128
芯片封装为32-Pin TSOP
地址分配
128K-->分两段
BANK0 A19A18A17A16=01X0
BANK1 A19A18A17A16=01X1
256K-->分四段
BANK0 A19A18A17A16=0100
BANK1 A19A18A17A16=0101
BANK2 A19A18A17A16=0110
BANK3 A19A18A17A16=0111
512K-->分八段
BANK0 A19A18A17A16=0000
BANK1 A19A18A17A16=0001
BANK2 A19A18A17A16=0010
BANK3 A19A18A17A16=0011
BANK4 A19A18A17A16=0100
BANK5 A19A18A17A16=0101
BANK6 A19A18A17A16=0110
BANK7 A19A18A17A16=0111



AT45DB081B/041B/021B
8Mbit/4Mbit/2Mbit
1M/512K/256K

Title		
Clock&SRAM&Flash		
Size	Number	Revision
A4		
Date:	19-Jan-2007	Sheet of
File:	C:\Documents and Settings\john.sund... 4	File: C:\Documents and Settings\john.sund... 4





Title		
Size	Number	Revision
A4		
Date:	19-Jan-2007	
File:	C:\Documents and Settings\john_sun\My Documents\Files\模块cp2200核心模块Tpm1.P.DDB	