



DACO SEMICONDUCTOR CO., LTD.

**MUR20005CT(R)
THRU
MUR20060CT(R)**

SUPER FAST DIODES MODULE TYPE 200A

Features

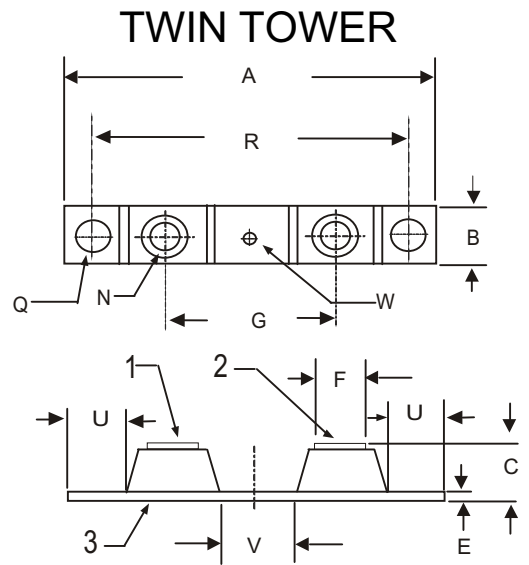
High Surge Capability
Types Up to 600V V_{RRM}

**200Amp Rectifier
50-600 Volts**

Maximum Ratings

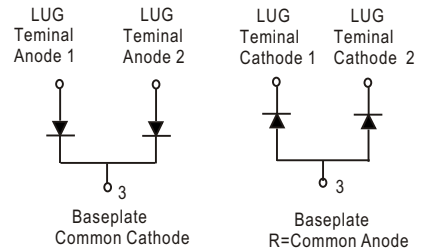
Operating Temperature: -40°C to $+175^{\circ}\text{C}$
Storage Temperature: -40°C to $+175^{\circ}\text{C}$

Part Number	Maximum Recurrent Peak Reverse Voltage	Maximum RMS Voltage	Maximum DC Blocking Voltage
MUR20005CT(R)	50V	35V	50V
MUR20010CT(R)	100V	70V	100V
MUR20020CT(R)	200V	140V	200V
MUR20040CT(R)	400V	280V	400V
MUR20060CT(R)	600V	420V	600V



Electrical Characteristics @ 25 °C Unless Otherwise Specified

Average Forward Current Per Pkg	$I_{F(AV)}$	200 A	$T_C = 140^{\circ}\text{C}$
Peak Forward Surge Current Per leg	I_{FSM}	800A	8.3ms, half sine
Maximum Instantaneous Forward Voltage * Per leg 20005~20040 20060	V_F	1.30V 1.70V	$I_{FM} = 100A;$ $T_J = 25^{\circ}\text{C}$
Maximum Instantaneous Reverse Current At Rated DC Blocking Per leg	I_R	25uA 1mA	$T_J = 25^{\circ}\text{C}$ $T_J = 125^{\circ}\text{C}$
Maximum Reverse Recovery Time Per leg 20005~20020 20040 20060	t_{rr}	75 ns 90 ns 110 ns	$I_F=0.5A, I_R=1.0A,$ $I_{RR}=0.25A$
Thermal Resistance, Junction to Case Per leg	$R_{\theta JC}$	0.45	$^{\circ}\text{C/W}$



DIM	DIMENSIONS				NOTE
	INCHES		MM		
	MIN	MAX	MIN	MAX	
A	----	3.630	----	92.20	
B	0.700	0.800	17.78	20.32	
C	----	0.650	----	16.51	
E	0.120	0.130	3.05	3.30	
F	0.490	0.510	12.45	12.95	
G	1.379	BSC	35.02	BSC	
H	----	----	----	----	
N	1/4 -20 UNC FULL				
Q	0.275	0.290	6.99	7.37	2 PL
R	3.150	BSC	80.01	BSC	
U	0.600	----	15.24	----	
V	0.312	0.370	7.92	9.40	
W	0.180	0.195	4.57	4.95	

*Pulse Test: Pulse Width 300 usec, Duty Cycle 2%



Figure 1-Typical Forward Characteristics

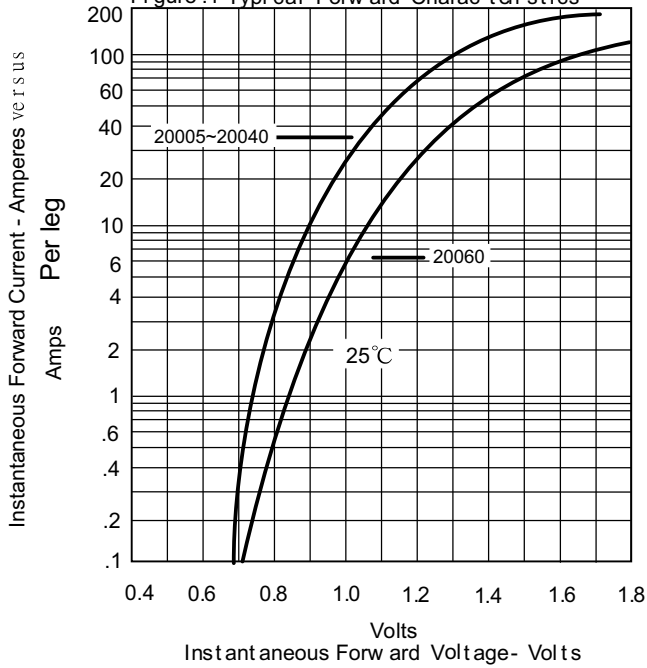


Figure 2-Forward Derating Curve

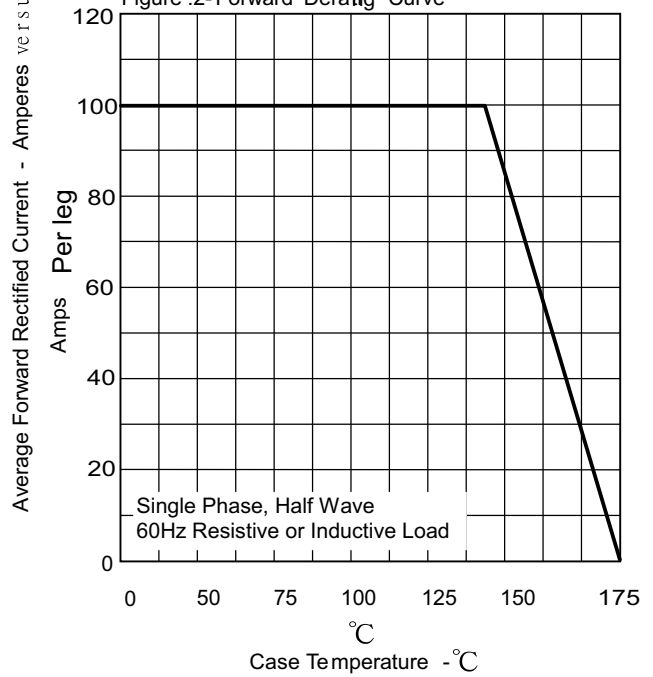


Figure 3-Peak Forward Surge Current

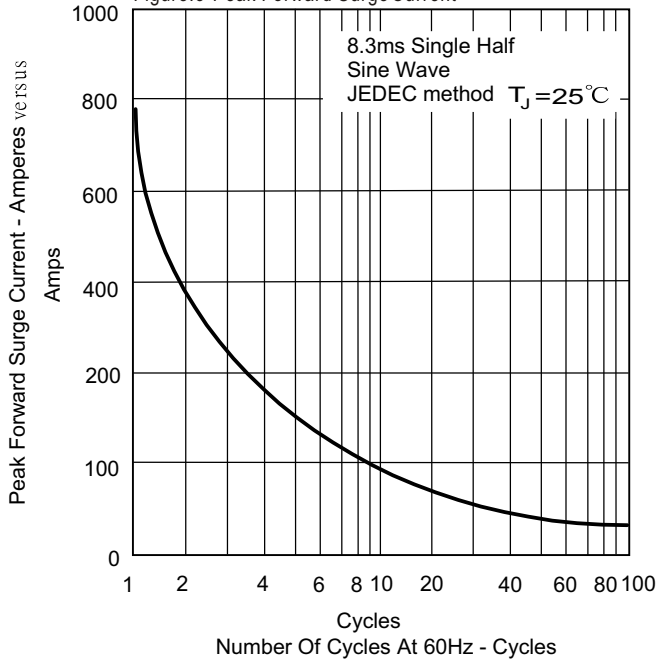


Figure 4-Typical Reverse Characteristics

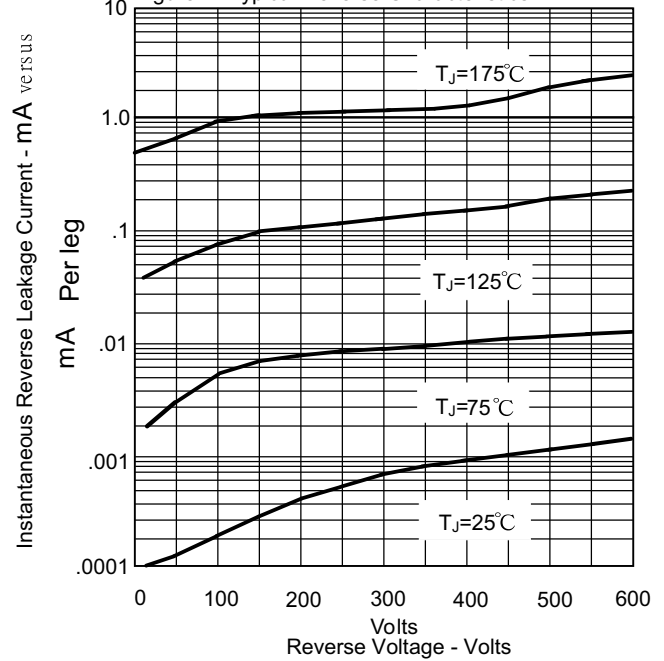




Figure .5-GR1 Test Circuit

