



AC/DC Controller

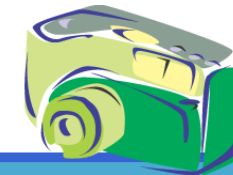


Hi-Voltage Start-Up Green Mode PWM Controller

Part Number	Hi-V Start-Up Current	UVLO ON (V)	UVLO OFF (V)	VCC Max. (V)	Driving Capacity (mA)	Switching Frequency	Internal Slop Comp.	Protection				LEB (nS)	Freq. Trembling	Package
								OCP	OVP	OLP	OTP			
LD7575 PS/PN	1mA	16.0	10.0	30	500	Adj.	Yes	Yes	Yes	Yes	-	350	-	SOP-8/ DIP-8
LD7575A PS/PN	1mA	16.0	10.0	30	500	Adj.	Yes	Yes	Yes	Yes	-	200	-	SOP-8/ DIP-8
LD7576 PS/PN	1mA	16.0	10.0	30	500	Fixed.	Yes	Yes	Yes	Yes	Inter.	230	-	SOP-8/ DIP-8

Green Mode PWM Controller

Part Number	Start-Up Current Max.	UVLO ON (V)	UVLO OFF (V)	VCC Max. (V)	Driving Capacity (mA)	Switching Frequency	Internal Slop Comp.	Protection				LEB (nS)	Precision Brownout Control	Package
								OCP	OVP	OLP	OTP			
LD7530/A PL/PN	20 μ A	16.0	10.0	30	300	65KHz fixed	Yes	Yes	Yes	Yes	-	200	-	SOT-26, DIP-8
LD7535/A PL/PN	20 μ A	16.0	10.0	30	300	Adj.	Yes	Yes	Yes	Yes	-	350	-	SOT-26/ DIP-8
LD7535B PL	20 μ A	16.0	10.0	30	300	Adj.	Yes	Yes	Yes	Yes	-	200	-	SOT-26
LD7550B BL/BN	20 μ A	16.0	10.0	36	300	Adj.	Yes	Yes	Yes	-	-	200	-	SOT-26/ DIP-8
LD7520 PS/PN	35 μ A	16.0	10.0	30	500	65KHz fixed	Yes	Yes	Yes	Yes	Latch	350	-	SOP-8/ DIP-8
LD7522 PS/PN	35 μ A	16.0	10.0	30	500	65KHz fixed	Yes	Yes	Yes	Yes	Latch	350	Yes	SOP-8/ DIP-8
LD7522H PS/PN	35 μ A	16.0	10.0	30	500	65KHz fixed	Yes	Yes	Latch	Latch	Latch	350	-	SOP-8/ DIP-8
LD7552 BS/BN	25 μ A	16.0	11.4	36	500	Adj.	Yes	Yes	-	-	-	350	-	SOP-8/ DIP-8
LD7552B PS/PN	20 μ A	16.0	10.0	30	500	Adj.	Yes	Yes	Yes	Yes	-	350	-	SOP-8, DIP-8



DC/DC Controller

Single Synchronous Buck PWM Controller

Part Number	V _{IN}	V _{CC}	Freq.	Linear Controller	Operating Temperature	Synchronous Rectifier	Package
LD7120 PS	5V	5V	300KHz	No	0~70°C	Yes	SOP-8
LD7120A PS	5V	5V	300KHz	No	-30~85°C	Yes	SOP-8
LD7129 PS	3.3V/5V	5V/12V	600KHz	Yes	0~70°C	Yes	SOP-14

Photoflash Capacitor Charger

Part Number	V _{CC} MAX (V)	Shutdown Current	Auto Refresh	Internal MOS	Charging Mode	V _{FB} Tolerance	IGBT Driver	MAX Ton Time	Package
LD7261 PL	5.5V	100μA	Yes	No	Linearly Decrease	±1.0%	Yes	5.5μS	MSOP-10
LD7261A PL	5.5V	<1μA	No	No	Linearly Decrease	±1.0%	Yes	7.5μS	MSOP-10
LD7266A	5.5V	<1.5μA	No	Yes	Constant Current	±1.5%	Yes	7.0μS	MSOP-10/ DFN
LD7268 PL	5.5V	100μA	Yes	No	Constant Current	±1.0%	Yes	5.0μS	MSOP-10
LD7268A PL	5.5V	<1μA	No	No	Constant Current	±1.0%	Yes	6.0μS	MSOP-10

Boost Controller/ WLED Driver

Part Number	V _{IN} Max.	Frequency	LED Current	LED Driving Type	Package
LD7291 PL	3.6V	210KHz	18mA	Parallel	SOT26
LD7293 PL	3.6V	120KHz	350mA	-	SOT25

Boost Controller/ VFM Step up Converter

Part Number	V _{IN} Max.	Frequency	Output Voltage	Output Voltage Accuracy	Package
LD7280 PL	6.5V	120KHz	1.8V~5.0V	±2%	SOT25
LD7280 PJ	6.5V	120KHz	1.8V~5.0V	±2%	SOT89
LD7282 PL	6.5V	160KHz	1.8V~5.0V	±2%	SOT25
LD7282 PJ	6.5V	160KHz	1.8V~5.0V	±2%	SOT89



Green Solutions

Others



ACPI Controller

Part Number	Supply Current	UVP	Soft Start	Power OK	V _{DUAL} tolerance	Package
LD7301 PG	6mA	Yes	Yes	Yes	±1.5%	SSOP-20

LDO

Part Number	Input Voltage	Quiescent Current (typ.)	Output Current Limit (typ.)	Output Voltage	Dropout Voltage (typ.)	Reference Voltage Tolerance	Package
LD6902 PL	4~21V	30μA	90mA	Adj.	0.25V @90mA	±2%	SOT-26
LD6903 GU	5~19V	70μA	150mA	Adj.	0.15V @60mA	±1.5%	SC70-6
LD6904 GU	-11~ -5V	70μA	150mA	Adj.	0.15V @60mA	±1.5%	SC70-6
LD6909 GU	2.8~5.5V	100μA	420mA	1.8V~3.3V (0.1V a step)	0.22V @300mA	±2%	SC70-6
LD6912 GU	2.8~5.5V	140μA	420mA	1.5V~3.3V (0.1V a step)	0.22V @300mA	±2%	SC70-5
LD6969 G#	2.0~6.0V	5μA	200mA	1.5V~3.4V (0.1V step)	0.35V @50mA	±2%	SOT-25, 26 SC70-3, 70-6








OP-AMP

Part Number	No. of OP AMP	No. of V _{REF}	Max. VCC (V)	V _{REF}	V _{REF} Tolerance	V _{REF} Bias V _{CURRENT}	Package
LD8104 PS	4	1	21V	2.5V	±1.0%	1~100mA	SOP-16



Green Solutions

Package Information

SSOP-20	SOP-8 (also -16)	MSOP-10	SOT-26	SOT-25	SOT-89	DIP-8
						
2K/ Reel	2.5K/Reel	2.5K/Reel	3K/ Reel	3K/ Reel	3K/ Reel	3.6K/ Box

All above products are ROHS compliance.

LD reserves the right to make changes or corrections to its products at any time without notice. Customers should verify the datasheets are current and complete before placing order.