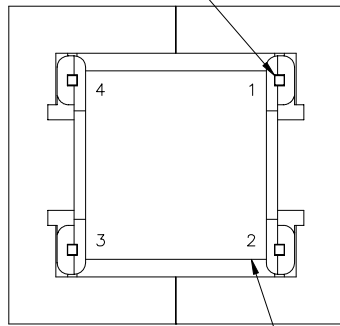
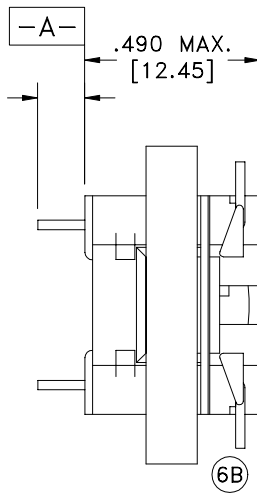


PART MUST INSERT FULLY TO SURFACE A IN RECOMMENDED GRID
 .025 SQ. (4) [1.64]
 .110/.140 [2.79/3.56]

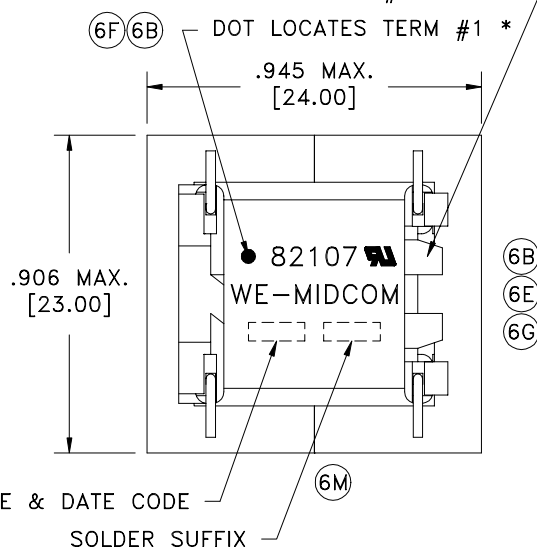


TERM. NO.'s FOR REF. ONLY



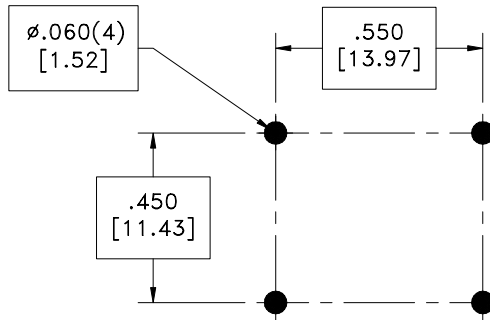
LOT CODE & DATE CODE

TAB LOCATES TERM. #3-4 SIDE

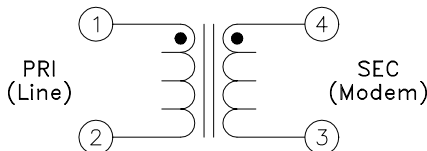


SOLDER SUFFIX

SOLDER SUFFIX	CUSTOMER TERMINAL	RoHS	LEAD(Pb)-FREE
	Sn100%	No	No
LF3	Sn100%	Yes	Yes



RECOMMENDED P.C. PATTERN, COMPONENT SIDE



ELECTRICAL SPECIFICATIONS @ 25°C unless otherwise noted:

- IMPEDANCE: Designed to reflect 600 ohm on PRI with 301 ohm load on SEC.
- LONGITUDINAL BALANCE: 66dB min., 60 - 1000Hz; 46dB min., 1-2, 1000 - 4000Hz; per FCC Part 68.310, with terminal 3 or 4 grounded.
- D.C. RESISTANCE, 20°C: PRI, 152 ohms ±10%. SEC, 152 ohms ±10%.
- FREQUENCY RESPONSE: ±1.0dB, 600Hz - 3500Hz; ±4.0dB, 300Hz - 600Hz.
- INSERTION LOSS: 3.75dB max., 1000Hz, per IEEE method, 20°C, 0 - 65mADC.
- DIELECTRIC RATING: 1500VAC, 1 minute tested by applying 1875VAC for 1 second between PRI - SEC.
- 6C) TURNS RATIO: (4-3):(1-2) = 1:1, ±2%.
- OPERATING CONDITIONS: All specs. except as noted to be from -20 to +4dBm, 0 to 65mADC in PRI, 600 ohm source resistance on PRI, 301 ohm load on SEC.

- 6E) Designed to comply with the following requirements as defined by IEC60950-1, EN60950-1, UL60950-1/CSA60950-1 and AS/NZS60950.1:
- 6M) - Supplementary insulation for a primary circuit at a working voltage of 250Vrms.

Midcom p/n 82107-LF3 is eiSos p/n: 750082107

- 6B)* Marking detail may be rotated 90° clockwise. Locating dot will not move. DETAILS SUBJECT TO CHANGE

AGENCY NUMBER	
6E) BABB	NC/012412
IEC60950-1 (Via CB cert.)	US/9300/UL
JAPAN (Via CB cert.)	US/9300/UL
ACA/AUSTEL (Via CB cert.)	US/9300/UL
6E)6C) UL60950-1	E205930
6E)6C) CSA60950-1 (Via CUL)	E205930

Unless otherwise specified:
 Tolerances:
 Angles: ±1°
 Fractions: ±1/64
 Decimals: ±.005 [13]

DRAWING TITLE

TRANSFORMER

eiSos p/n: 750082107



DRAWING NO.

82107/-LF3

REV.

6N
7/07

REVISIONS: SEE SHEET 1

SCALE ---

SHEET 2 OF 6

DWG # 82107/-LF3