

NOTES: (UNLESS OTHERWISE SPECIFIED)

1. ELECTRICAL PERFORMANCE

- A: WINDING N1: 4 TURNS, Ø 0.1x40P+2P, 3.15 uH, ±20%, 8mOhm
- B: WINDING N2: 40 TURNS, Ø 0.2xP, 315 uH, ±10%, 240mOhm
- C: WINDING N3: 4 TURNS, Ø 0.1x20P+4P, 3.15 uH, ±20%, 8mOhm

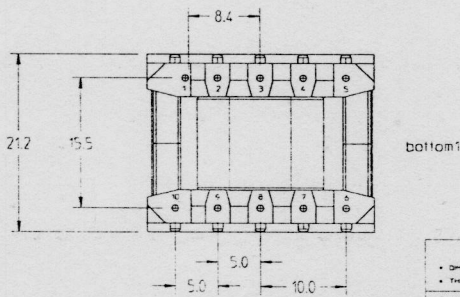
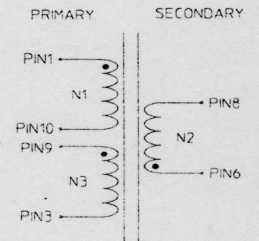
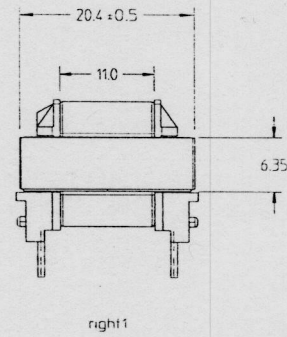
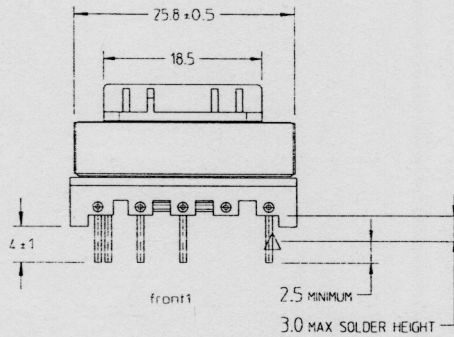
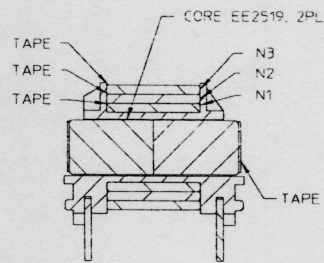
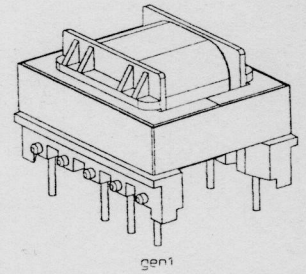
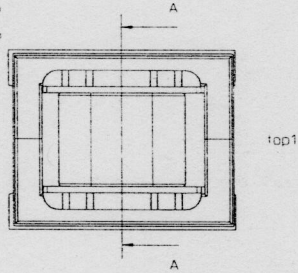
2. INSULATE WINDINGS WITH 60w X 0.025I X 3TS CORE TAPE

3. REMOVE PINS 2, 4, 5 AND 7.

4. CORE: 1900 MH/0-2, EE2519, 2 PIECES

5. BOBBIN MATERIAL: PHENOLIC T375.

| REV | NO | REV | REVISIONS | APPROVED | DATE |
|-----|----|-----|------------------------------------|----------|------------|
| 3 | 2 | | MODIFIED TO MEET SAMPLE | | 10/16/2008 |
| 4 | 2 | | REVISED N1 INCREASE SIZE TOLERANCE | | 10/18/2008 |



DO NOT SCALE THIS
METRIC
DRAWING

| UNLESS OTHERWISE SPECIFIED | | 1 | A/R | PART/MATERIAL DESCRIPTION | | MATL. PART. NO. | MATL. DWG. NO. | MATL. SPEC. |
|---------------------------------|--------------------------|--------------------|------|---------------------------|--|-----------------|----------------|-------------|
| • DIMENSIONS ARE IN MILLIMETRES | • THIRD ANGLE PROJECTION | CW | DATE | 5/19/2008 | | | | |
| • TOLERANCES | | ENGINEER/CHECKER | DATE | | | | | |
| NN | +0.5 | RELEASE TO PROD. | DATE | | | | | |
| NNN | +0.2 | DESIGN REVISION BY | DATE | | | | | |
| NNNN | +0.1 | | DATE | | | | | |
| ANGLES | ±1° | | DATE | | | | | |
| | | | | SCALE | | 3: | 1 | 1 |
| | | | | SHEET | | | 1 | 1 |
| | | | | OF | | | | |

MAIN
TRANSFORMER

PART NUMBER 3210-11