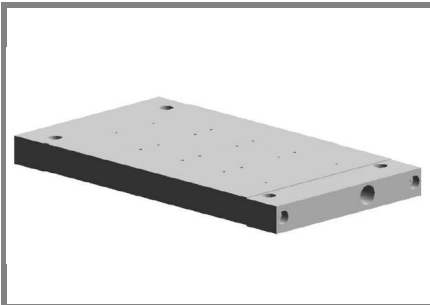


NWK 40



SEMIKRON Heatsinks

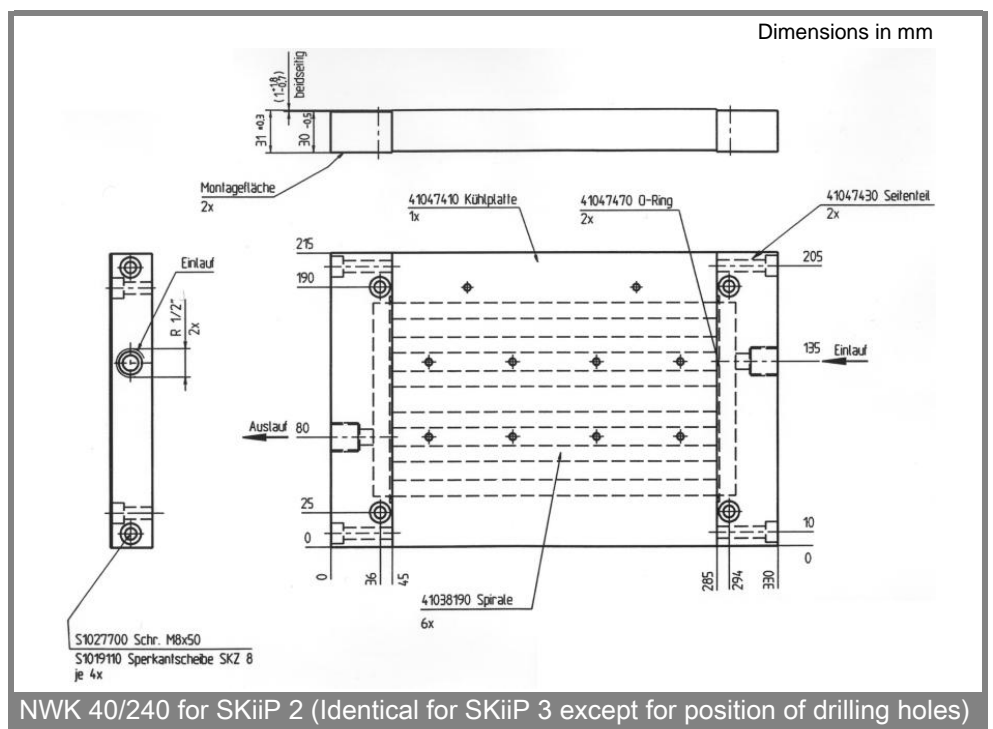
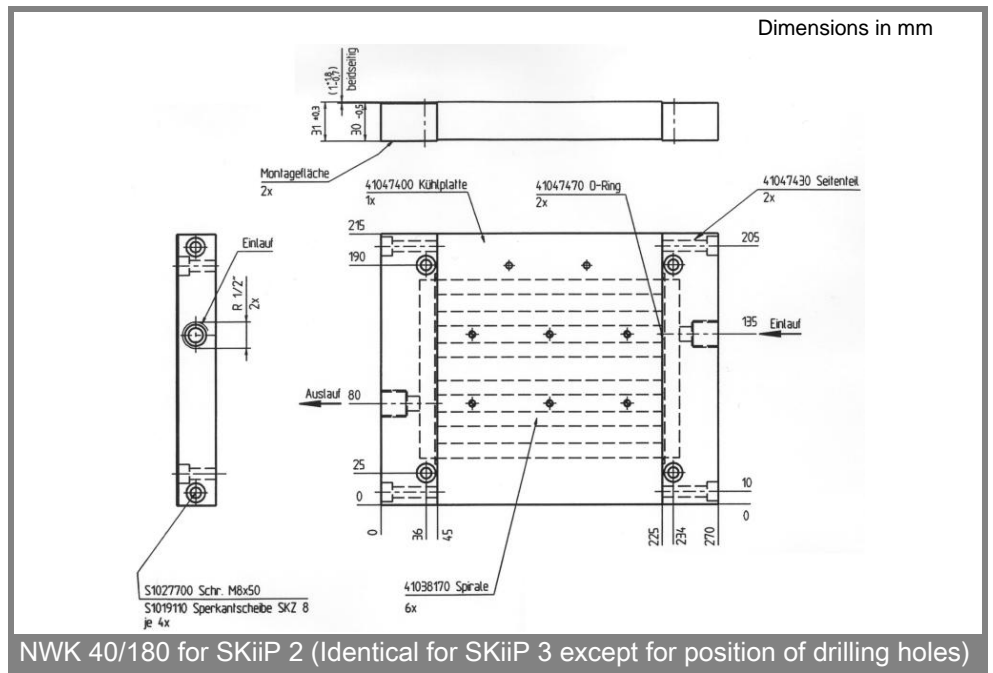
| Standard lengths | n | b / d Ø mm | $R_{th(s-w)}$ (SKiiP 2) $R_{th(sensor-water)}$ K/W | $R_{th(r-w)}$ (SKiiP 3) $R_{th(sensor-water)}$ K/W | w kg |
|------------------|---|---------------|--|--|---------|
| NWK 40/180 | | SKiiP 2 | 50% glycol ; 8 l/min | | |
| NWK 40/240 | | 2-fold | 0,0148 | | 4,26 |
| NWK 40/300 | | 3-fold | 0,0125 | | 5,18 |
| | | 4-fold | 0,010 | | 6,14 |
| | | SKiiP 3 | | 50% glycol ; 8 l/min | |
| NWK 40/180 | | 2-fold | | 0,012 | 4,26 |
| NWK 40/240 | | 3-fold | | 0,011 | 5,18 |
| NWK 40/300 | | 4-fold | | 0,009 | 6,14 |

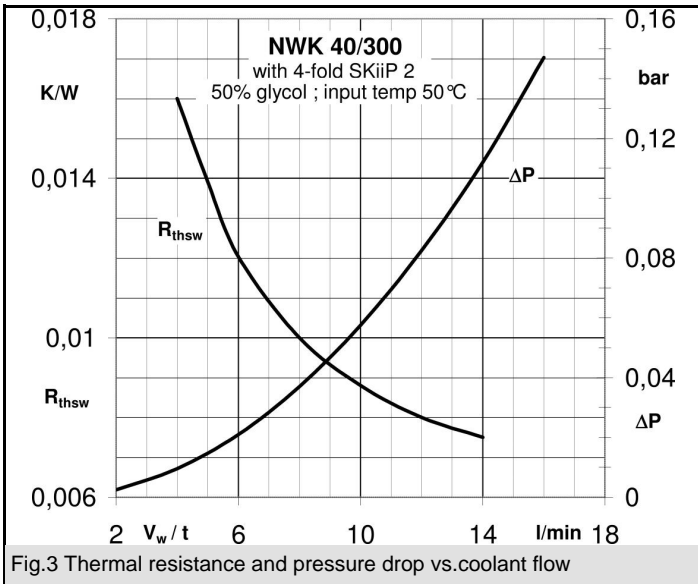
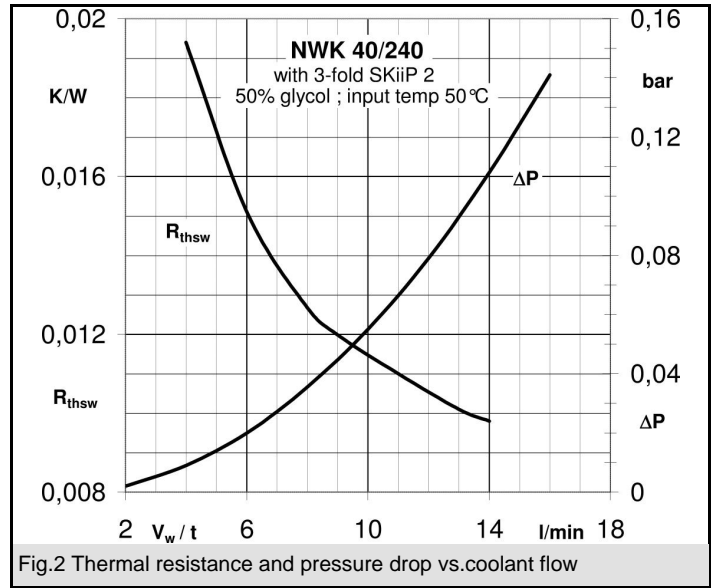
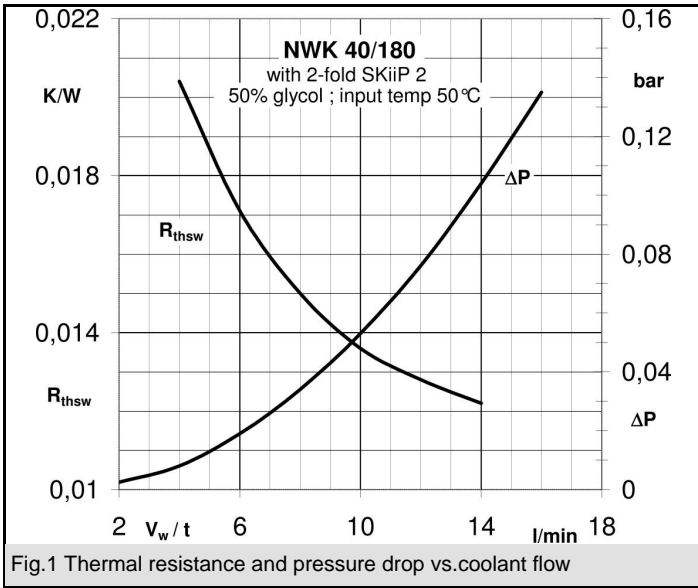
For SKiiP 2 + 3

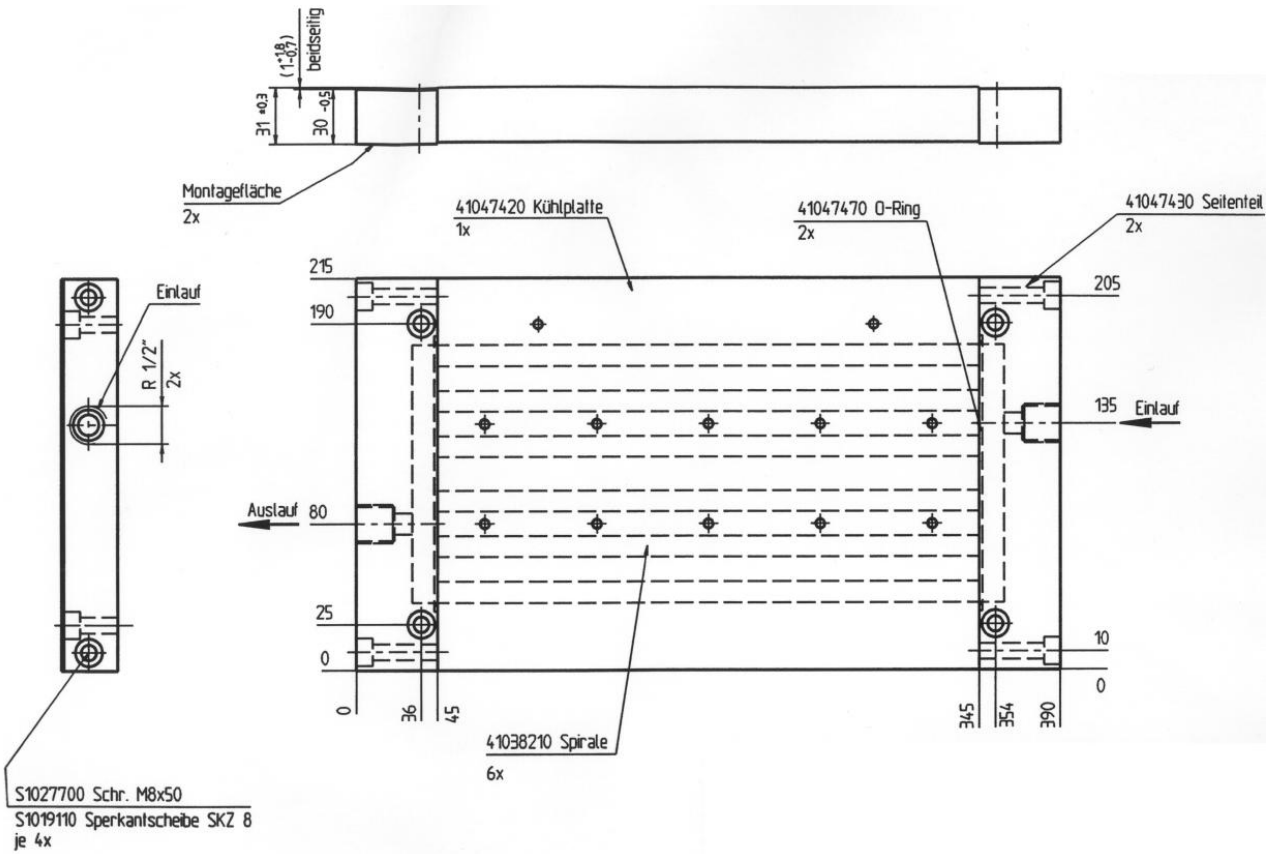
NWK 40

Features

- Intended for water/liquid cooling of 2-fold, 3-fold + 4-fold versions of SKiiP 2 + 3
- Different side parts available for different directions/positions of In/Out coolant nozzles (contact SEMIKRON for more info)







NWK 40/300 for SKiiP 2 (Identical for SKiiP 3 except for position of drilling holes)