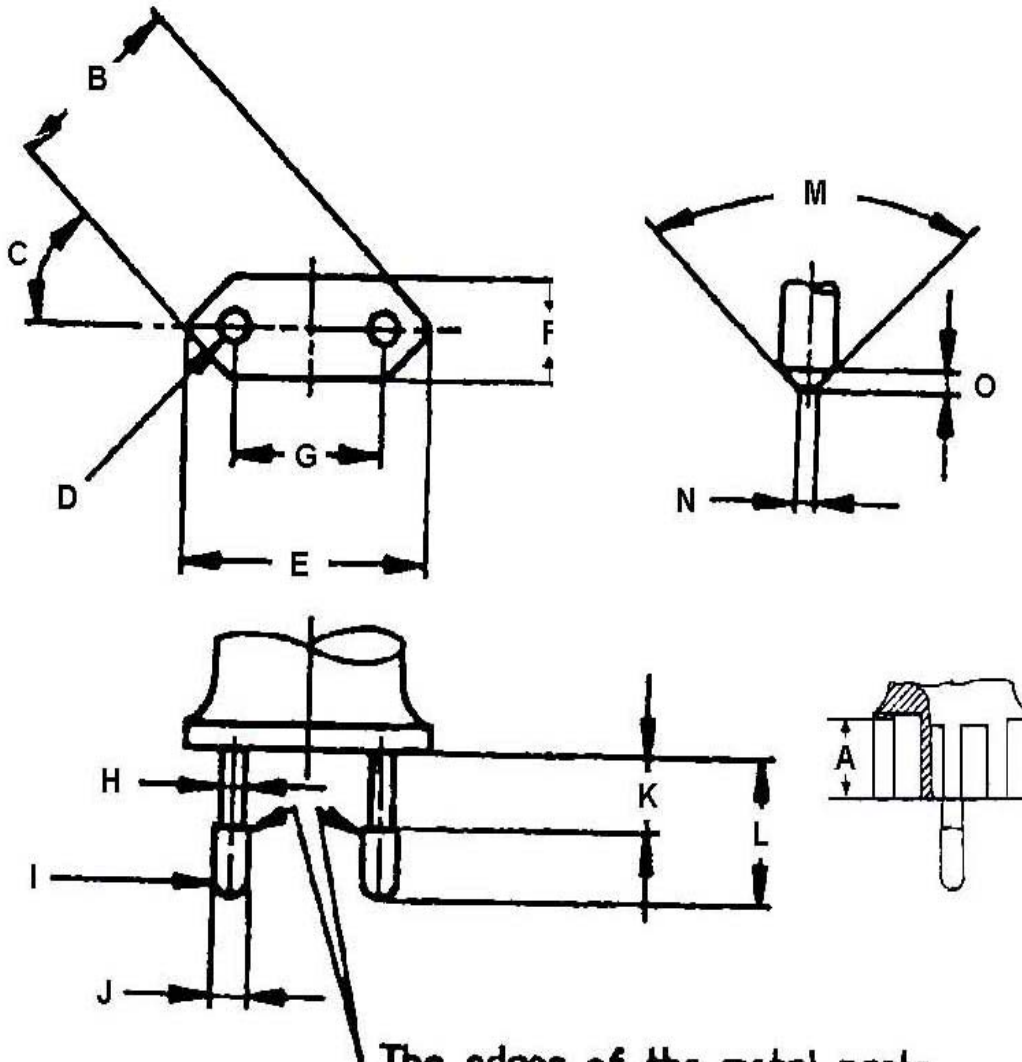


VDE PLUG DIMENSION (mm)

Two-pin plugs for class II appliances (Up to 2.5 A rating)

According to EN50075 - Standard Sheet and IEC60083 - Standard C5



The edges of the metal parts shall be either chamfered or rounded off

金属下部结合部分边缘应光滑钝化，不得尖锐刺手。

VDE PLUG DIMENSION CHECK LIST.

符号	标准值 (mm)	测量值(mm)
A	≥ 16.5	---
B	25.6-26.6	Min.: Max.:
C	45°	---
D	R5.0-6.0	---
E	34.6-36.0	Min.: Max.:
F	13.0-14.4	Min.: Max.:
G	PINS 与台面结合处中心点间距 18.0-19.2	
G	PINS 末端中心点间距 17.0-18.0	

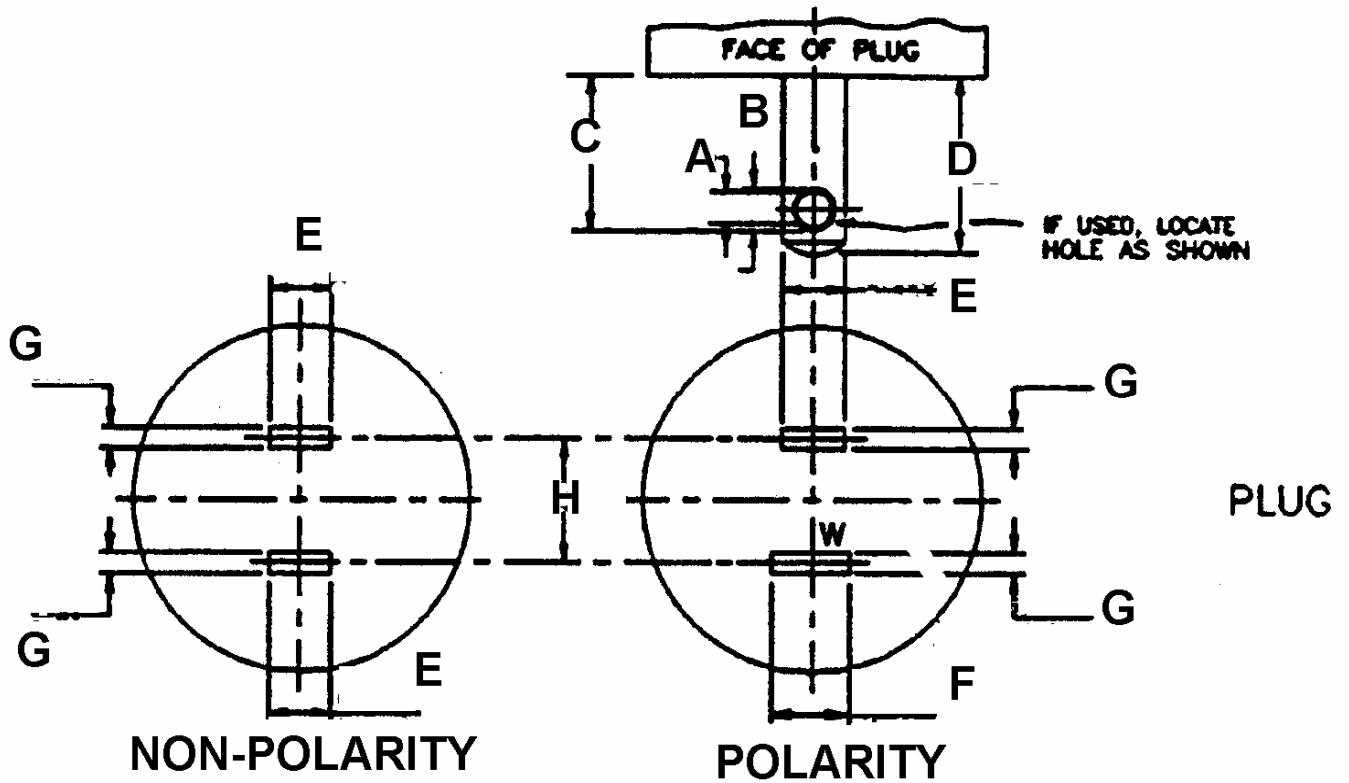
符号	标准值(mm)	测量值 (mm)
H	从 PIN 脚与托台面结合处上方 4mm 处之内的直径值 ≤ 4.0	
H	从 PIN 脚与托台面结合处上方 4mm 处的直径值 ≤ 3.8	
I	---	---
J	3.94-4.06	
K	10.0-11.0	
L	18.5-19.5	
M	$\leq 90^\circ$	---
N	0.7-1.7	---
O	≤ 2.0	---

从外壳圆周面延伸到 PIN 脚与托台结合处任意点之间的距离最小为 18mm

UL PLUG DIMENSION (mm)

Dimension Checking for Two-pin plugs of NA (15 A, 125 V)

According to ANSI/UL 1310 and ANSI/UL 1861 (NEMA Figure 1-15)



UL PLUG DIMENSION CHECK LIST 公差为 $\pm 0.127\text{mm}$

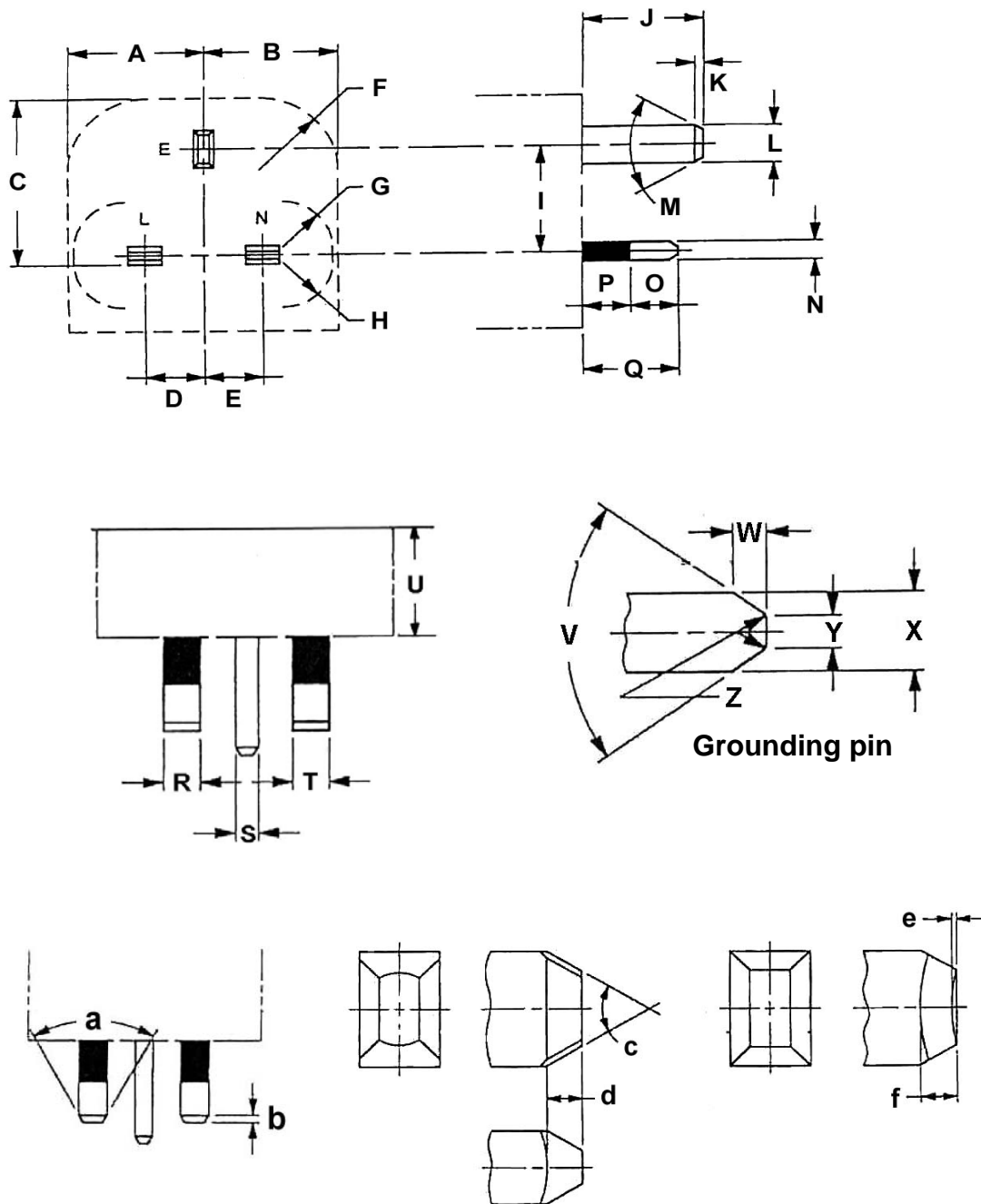
符号	标准值 (mm)	测量值(mm)
A	3.175	
B	3.96	
C	13.77	
D	$18.23 \geq D \geq 15.86$	

符号	标准值(mm)	测量值 (mm)
E	$6.60 \geq E \geq 6.09$	
F	$8.17 \geq F \geq 7.80$	
G	$1.65 \geq G \geq 1.40$	
H	12.7	

起始于金属插脚的任意一点，与金属插脚的托台圆周边之间的距离不得小于 7.9 mm

BS PLUG DIMENSION (mm)

According to Figure 4 of BS1363



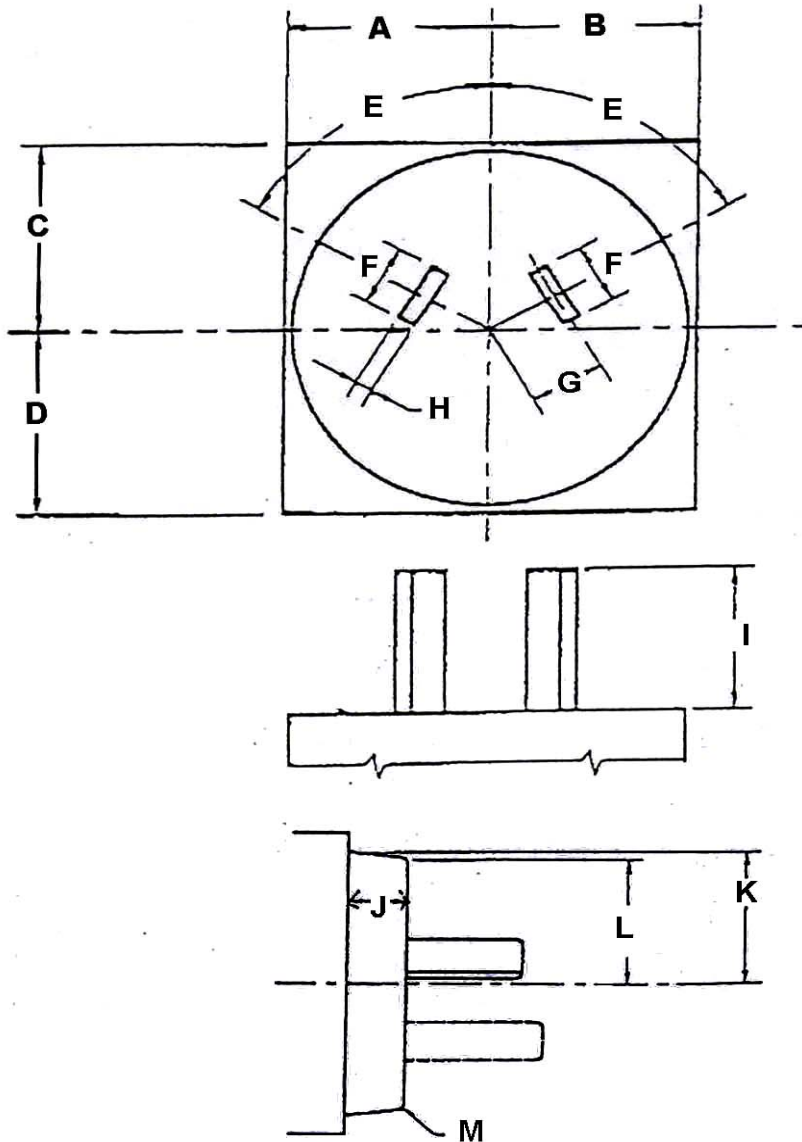
BS PLUG DIMENSION CHECK LIST.

符号	要求值(mm)	测量值 (mm)
A	25.37 max.	
B	25.37 max.	
C	34.6 max.	
D	11.05-11.18	
E	11.05-11.18	
F	R 15 min.	
G	R 9.5 min.	
H	R 9.5 min.	
I	22.10-22.36	
J	22.23-23.23	
K	1.35-1.85	
L	7.80-8.05	
M	58°-62°	
N	3.90-4.05	
O	9.2 max.	
P	9.5 max.	

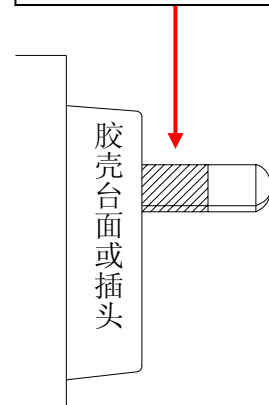
符号	要求值(mm)	测量值 (mm)
Q	17.2-18.2	
R	6.22-6.48	
S	3.90-4.05	
T	6.22-6.48	
U	6.35 min.	
V	60°-80°	
W	1.35-1.85	
X	3.90-4.05	
Y	1.2-2.0	
Z	R 0.1-1.0	
a	58°-62°	
b	1.35-1.85	
c	58°-62°	
d	1.35-1.85	
e	0.2 max.	
f	1.35-1.85	

SAA PLUG DIMENSION (mm)

According to AS/NZS 3112:1993 Two-pin plugs (Up to 10 A rating)



以台面为起点包胶高度为 $8.7 \pm 0.5\text{mm}$



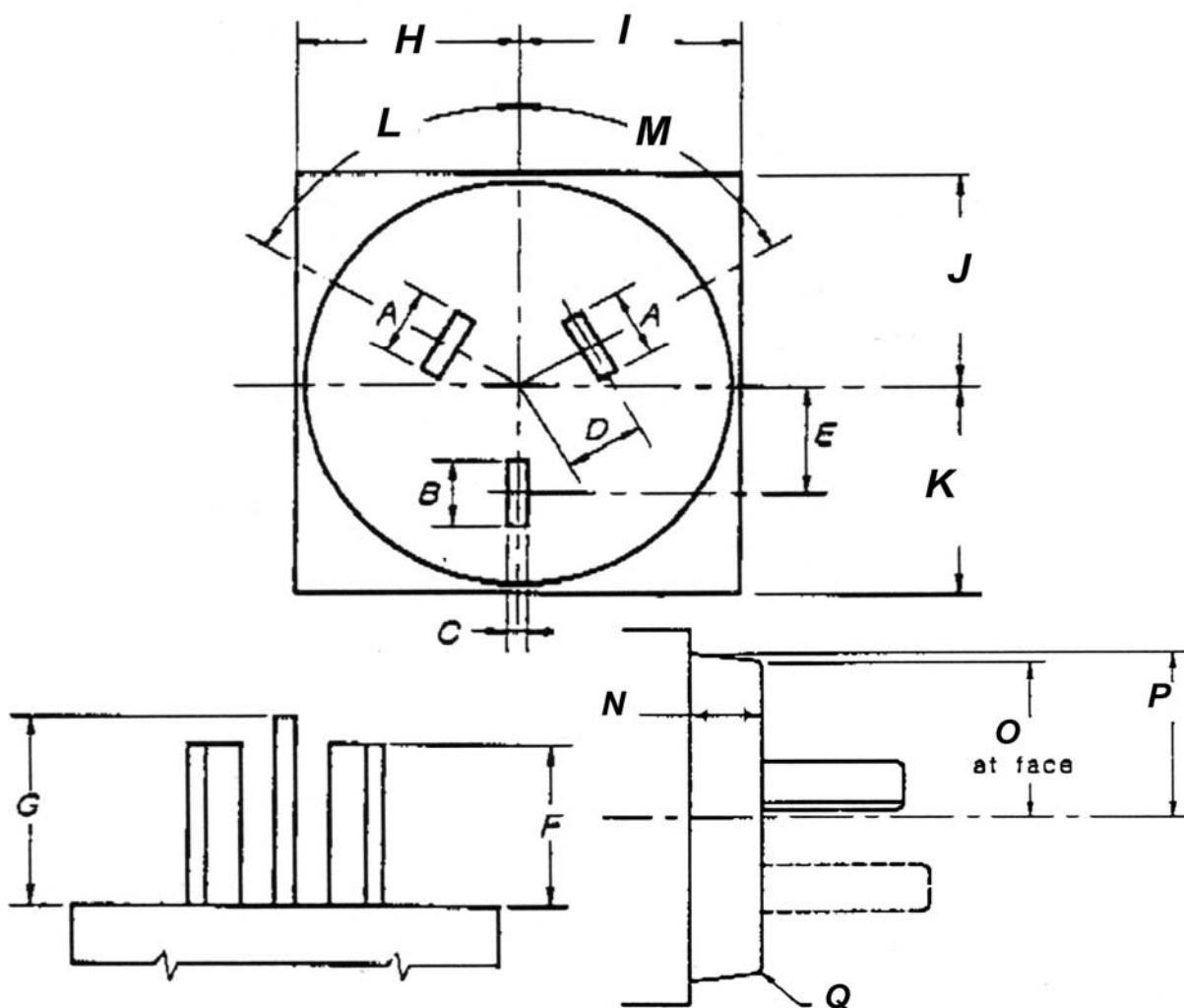
符号	标准值 (mm)	测量值(mm)
A	< 21.9 or > 27.0	
B	< 21.9 or > 27.0	
C	< 21.9 or > 27.0	
D	< 21.9 or > 27.0	
E	60°	
F	6.2 – 6.5	
G	7.92	

符号	标准值 (mm)	测量值(mm)
H	1.58 – 1.78	
I	16.66 – 17.46	
J	8.6min	
K	R 21.0 max	
L	R 19.0 – 21.0	
M	R 1.0 max	

以台面为起点, L&N PIN 包胶高度为 $8.7 \pm 0.5\text{mm}$

According to AS/NZS 3112:1993 Three-pin plugs (10 A or 15A rating)

AS/NZS 3112:1993



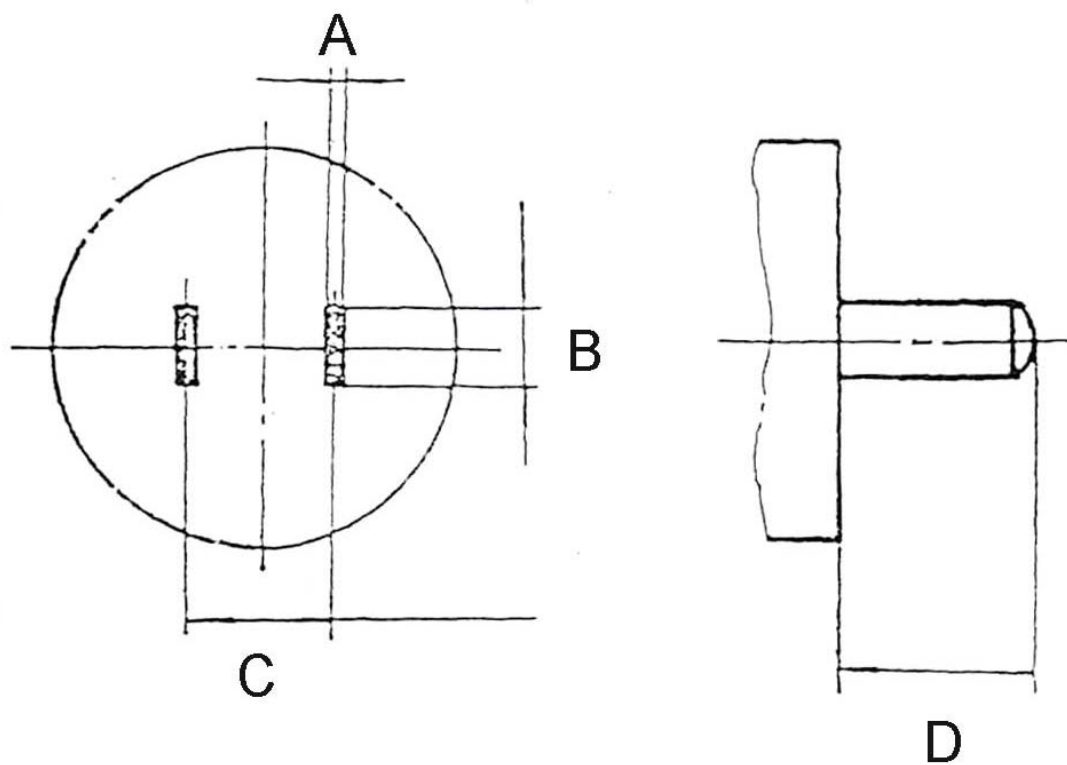
符号	标准值(mm)	测量值(mm)
A	6.2 ~ 6.5	
B	6.2 ~ 6.5	
C	1.58 ~ 1.78	
D	7.92	
E	10.31	
F	16.66 ~ 17.46	
G	19.14 ~ 20.74	
H	< 21.9 or > 27.0	
I	< 21.9 or > 27.0	

符号	标准值 (mm)	测量值(mm)
J	< 21.9 or > 27.0	
K	< 21.9 or > 27.0	
L	60 °	
M	60 °	
N	8.6min	
O	R 19.0 – 21.0	
P	R 21.0 max	
Q	R 1.0 max	

以台面为起点, L&N PIN 包胶高度为 8.7±0.5mm

CHINA PLUG DIMENSION (mm)

According to Fig 1 of GB 1002-1996 Tow-pin plugs (6 A, 10 A rating)

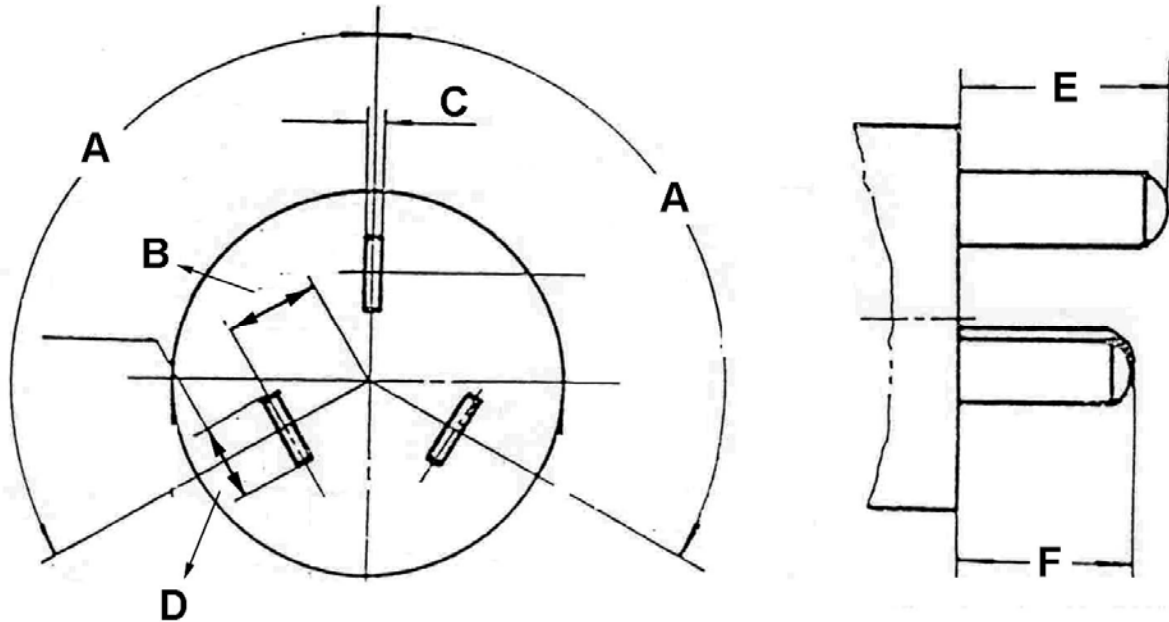


CHINA PLUG DIMENSION CHECK LIST.

符号	标准值(mm)	测量值(mm)
A	1.4 ~ 1.5	
B	6.18 ~ 6.4	
C	12.565 ~ 12.835	
D	15.65 ~ 16.35	

CHINA PLUG DIMENSION (mm)

According to Fig 1 of GB 1002-1996 Three-pin plugs (Up to 6 A rating)

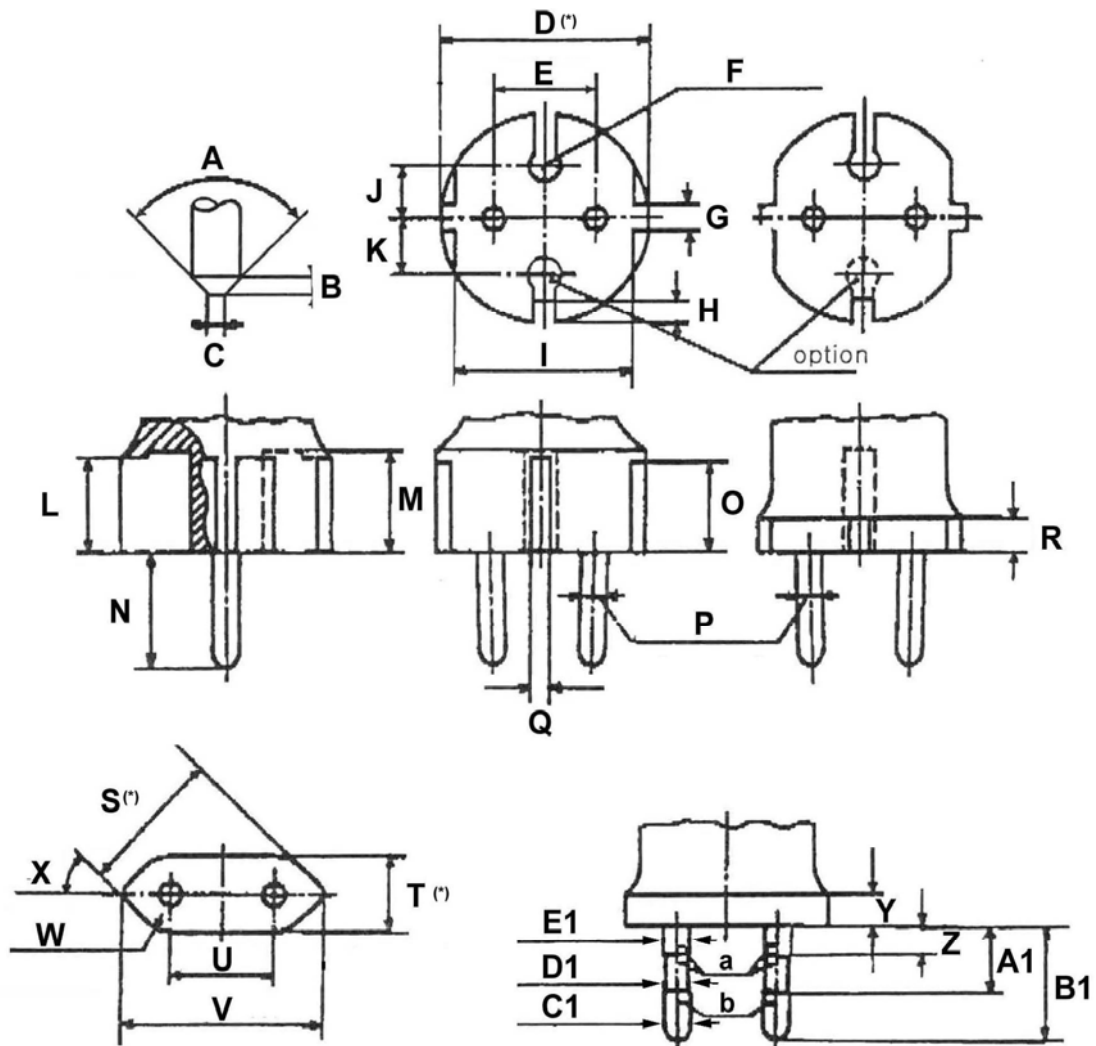


CHINA PLUG DIMENSION CHECK LIST.

符号	标准值(mm)	测量值(mm)
A	120°	
B	7.79 – 8.01	
C	1.4 – 1.5	
D	6.18 – 6.4	
E	20.58 – 21.42	
F	17.65 – 18.35	

KOREA PLUG DIMENSION (mm)

According to KSC 8305 Two-pole plug for 3A 250V



a: insulating collar

b: metal pin

(*) These dimensions shall not be exceeded within a distance of 18mm from the engagement face of the plug.

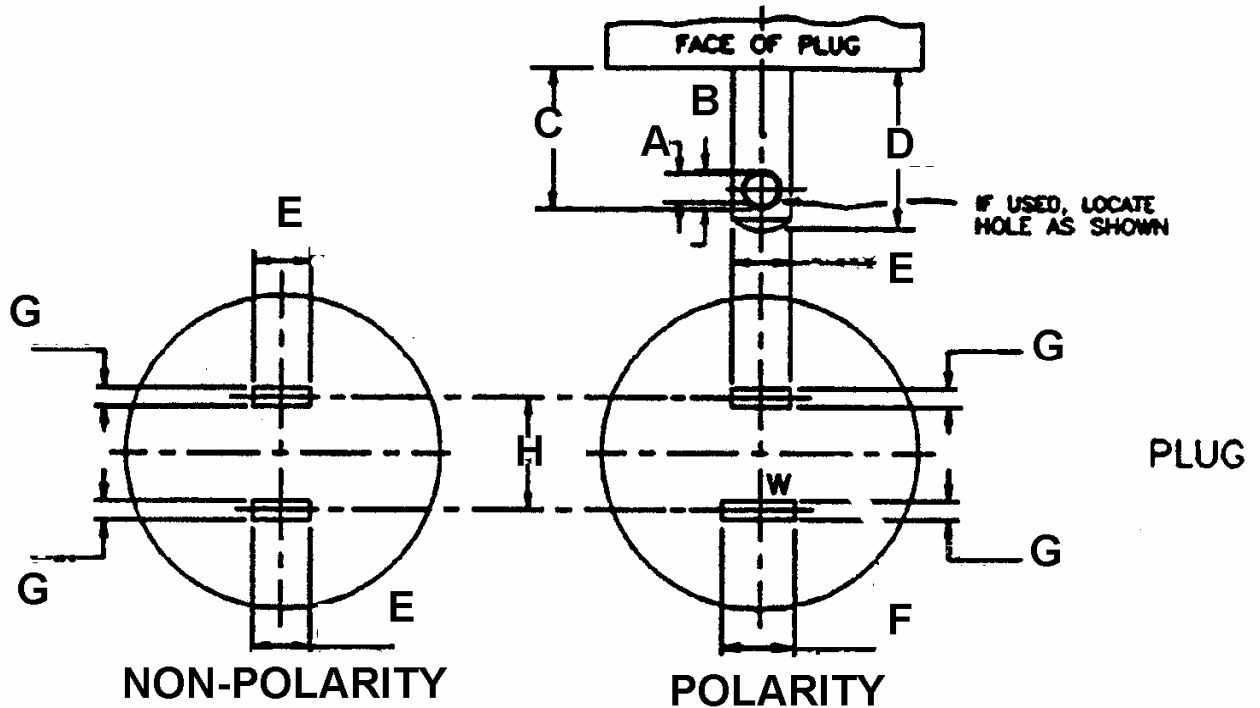
1. The sketches are not intended to govern design except as regards the dimensions shown.
2. Pin ends shall be rounded, or conical as shown in detail sketch.

KOREA PLUG DIMENSION CHECK LIST.

符号	标准值(mm)	测量值 (mm)	符号	标准值 (mm)	测量值 (mm)
A	Max. 90°		Q	3.3 ~ 4.3	
B	Max. 3		R	Min. 6	
C	Max. ϕ 2.5		S	25.6 ~ 26.6	
D	ϕ 36.0 ~ ϕ 37.0		T	13.0 ~ 14.4	
E	18.8 ~ 19.2		U	18.8 ~ 19.2	
F	R3.0 ~ R3.3		V	34.6 ~ 36.0	
G	3.5 ~ 4.5		W	R5 ~ R6	
H	Min. 5		X	45°	
I	31.5 ~ 32.5		Y	Min. 4	
J	9.9 ~ 10.1		Z	4	
K	9.9 ~ 10.1		A1	10.0 ~ 10.1	
L	Min. 16.5		B1	18.5 ~ 19.5	
M	Min. 17.5		C1	ϕ 4.794 ~ ϕ 4.806	
N	18.5 ~ 19.5		D1	Max. 4.3	
O	Min. 15.5		E1	4.4 ~ 4.8	
P	ϕ 4.794 ~ ϕ 4.806				

JAPAN PLUG DIMENSION (mm)

According to EMA Figure 1-15 Two-pin plugs of JP (15 A, 125 V)



JAPAN PLUG DIMENSION CHECK LIST.

符号	标准值(mm)	测量值(mm)	符号	标准值 (mm)	测量值(mm)
A	$3.3 \geq A \geq 2.8$		E	$6.6 \geq E \geq 6.0$	
B	3.5 以上		F	$8.2 \geq F \geq 7.8$	
C	$13.75 \geq C \geq 12.7$		G	$1.6 \geq G \geq 1.4$	
D	$18.3 \geq D \geq 15.7$		H	12.7	
起始于金属插脚的任意一点，与金属插脚的托台圆周边之间的距离不得小于 7.9 mm					

金属插脚孔内圆中心到插脚托台面的距离为 11.7 ± 0.4

金属 PIN 脚末端厚度为 0.9mm 以下