

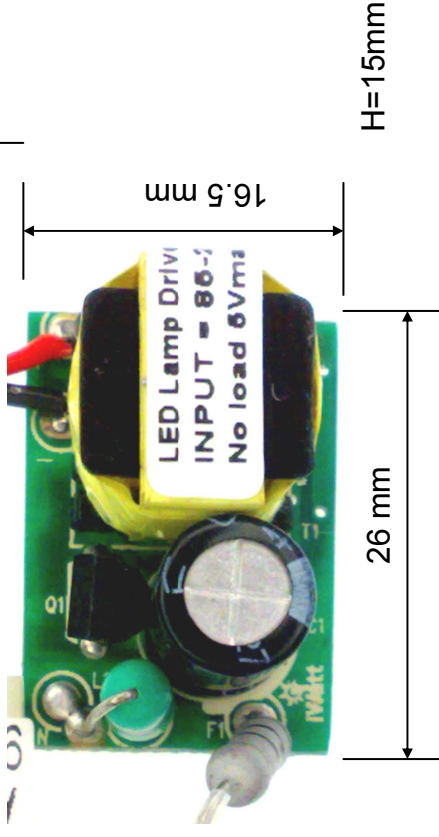
# LED驱动电源产品目录

## PGET0801: LED Driver 1X1W

Input: 90V-264V; Output: 3.5V, CC@ 350mA

EE13 transformer, CC tolerance +/-5%

Efficiency 65%; Isolated ; meet EMI



## PGET0802: LED Driver 1X3W

Input: 90V-264V; Output: 3.5V, CC@ 700mA

EE13 transformer, CC tolerance +/-5%

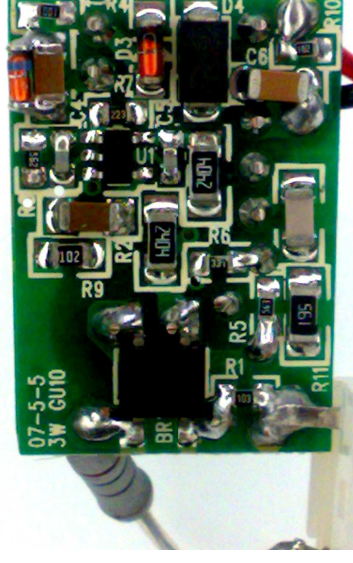
Efficiency 68%; Isolated ; meet EMI

## PGET0803: LED Driver 3X1W

Input: 90V-264V; Output: 10V, CC@ 350mA

EE13 transformer, CC tolerance +/-5%

Efficiency 72%; Isolated ; meet EMI

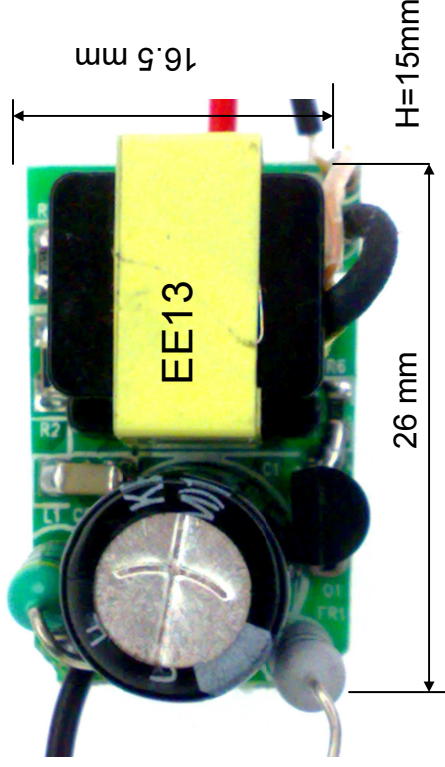


深圳市盘庚电子有限公司

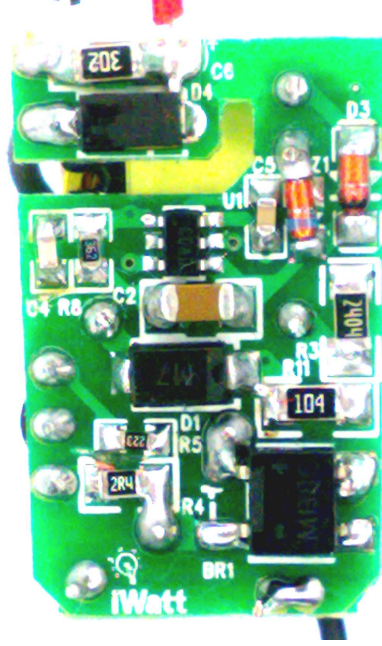
地址: 福田区沙尾西村398号605; 电话/传真: 83586062; 联系人: 陶宣武13500052352



**PGET0804: LED Driver 1X1W**  
**Input: 90V-264V; Output: 3.5V, CC@ 350mA**  
**EE13 transformer, CC tolerance +/-5%**  
**Efficiency 65%; Isolated ; meet EMI**



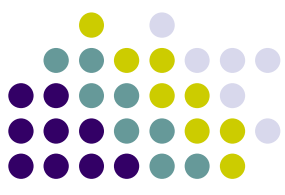
**PGET0805: LED Driver 1X3W**  
**Input: 90V-264V; Output: 3.5V, CC@ 700mA**  
**EE13 transformer, CC tolerance +/-5%**  
**Efficiency 65%; Isolated ; meet EMI**



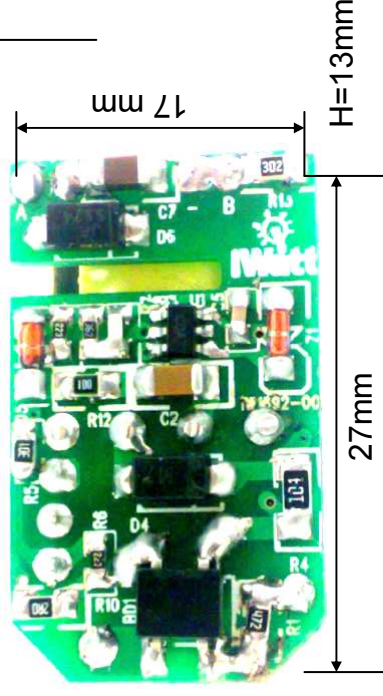
**PGET0806: LED Driver 3X1W**  
**Input: 90V-264V; Output: 10V, CC@ 350mA**  
**EE13 transformer, CC tolerance +/-5%**  
**Efficiency 72%; Isolated ; meet EMI**

**深圳市盘庚电子有限公司**

**地址：福田区沙尾西村398号605； 电话/传真： 83586062； 联系人： 陶宣武13500052352**



**PGET0807: LED Driver 1X1W**  
**Input: 90V-264V; Output: 3.5V, CC@ 350mA**  
**EFD15 transformer, CC tolerance +/-5%**  
**Efficiency 65%; Isolated ; meet EMI**



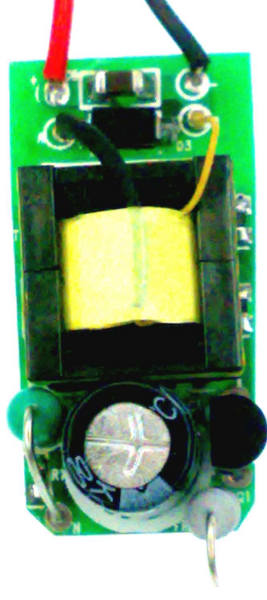
**PGET0808: LED Driver 1X3W**  
**Input: 90V-264V; Output: 3.5V, CC@ 700mA**  
**EFD15 transformer, CC tolerance +/-5%**  
**Efficiency 68%; Isolated ; meet EMI**



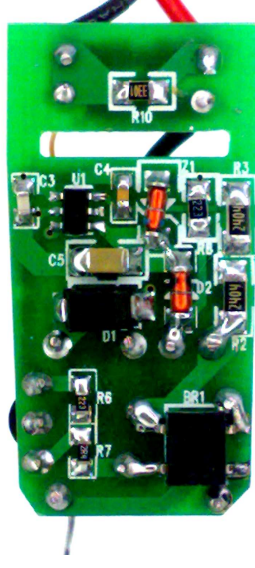
**PGET0809: LED Driver 3X1W**  
**Input: 90V-264V; Output: 10V, CC@ 350mA**  
**EFD15 transformer, CC tolerance +/-5%**  
**Efficiency 72%; Isolated ; meet EMI**

**深圳市盘庚电子有限公司**

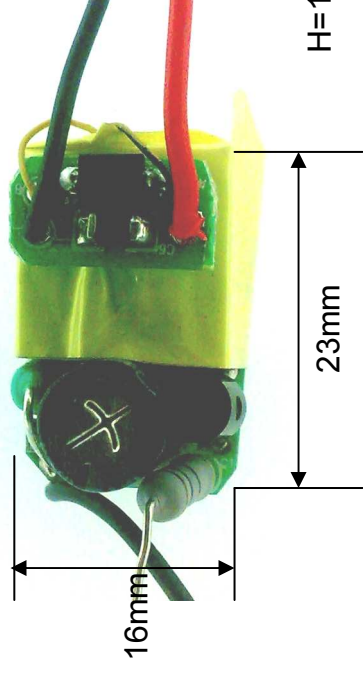
**地址: 福田区沙尾西村398号605; 电话/传真: 83586062; 联系人: 陶宣武13500052352**



**PGET0810: LED Driver 1X1W**  
**Input: 90V-264V; Output: 3.5V, CC@ 350mA**  
**EPC13 transformer, CC tolerance +/-5%**  
**Efficiency 65%; Isolated ; meet EMI**



**PGET0811: LED Driver 1X3W**  
**Input: 90V-264V; Output: 3.5V, CC@ 700mA**  
**EPC13 transformer, CC tolerance +/-5%**  
**Efficiency 63%; Isolated ; meet EMI**

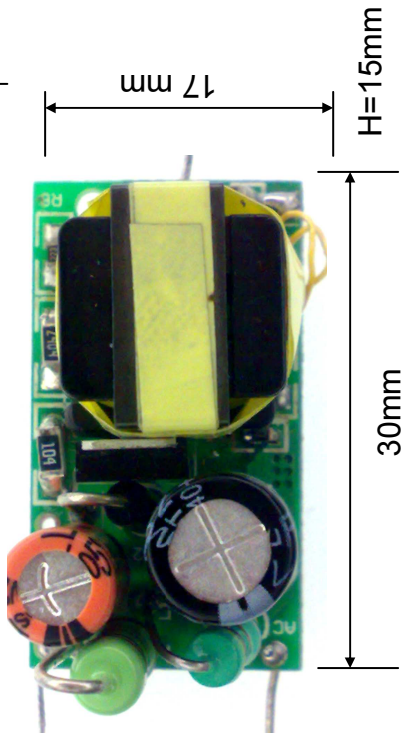


**PGET0812: LED Driver 3X1W**  
**Input: 90V-264V; Output: 10V, CC@ 350mA**  
**EPC13 transformer, CC tolerance +/-5%**  
**Efficiency 70%; Isolated ; meet EMI**

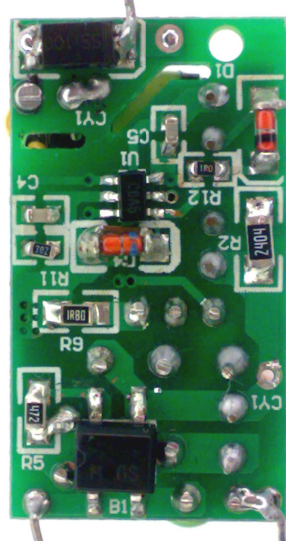
**深圳市盘庚电子有限公司**

**地址: 福田区沙尾西村398号605; 电话/传真: 83586062; 联系人: 陶宣武13500052352**





**PGET0813: LED Driver 5X1W**  
**Input: 90V-264V; Output: 16V, CC@ 350mA**  
**EE13 transformer, CC tolerance +/-5%**  
**Efficiency 78%; Isolated ; meet EMI**



**PGET0814: LED Driver 3X2W**  
**Input: 90V-264V; Output: 12V, CC@ 450mA**  
**EE13 transformer, CC tolerance +/-5%**  
**Efficiency 75%; Isolated ; meet EMI**

**深圳市盘庚电子有限公司**

**地址：福田区沙尾西村398号605； 电话/传真： 83586062； 联系人： 陶宣武13500052352**



**PGET0815: LED Driver 7X1W**

**Input: 90V-264V; Output: 24.5V, CC@ 350mA**

**EE19 transformer, CC tolerance +/-5%**

**PAR30 Efficiency 82%; Isolated ; meet EMI**

**PGET0816: LED Driver 3X2W**

**Input: 90V-264V; Output: 11V, CC@ 600mA**

**EE19V transformer, CC tolerance +/-5%**

**PAR30 Efficiency 78%; Isolated ; meet EMI**

**PGET0817: LED Driver 7X1W**

**Input: 90V-264V; Output: 24.5V, CC@ 350mA**

**EE19 transformer, CC tolerance +/-5%**

**PAR30 Efficiency 82%; Isolated ; meet EMI**

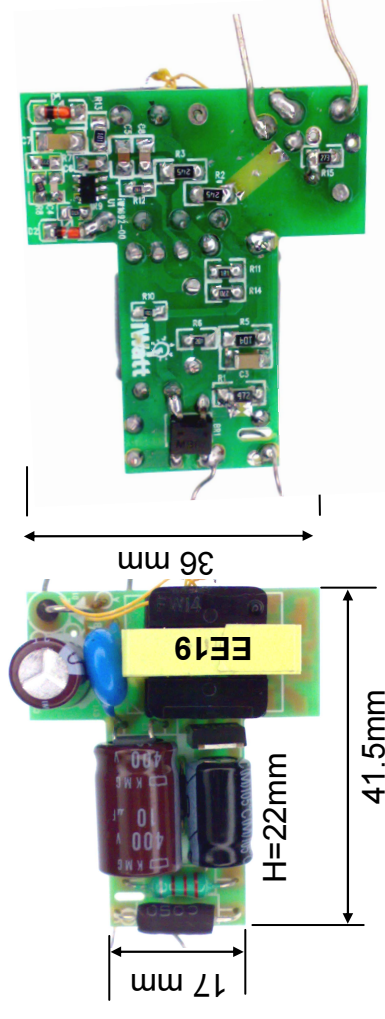
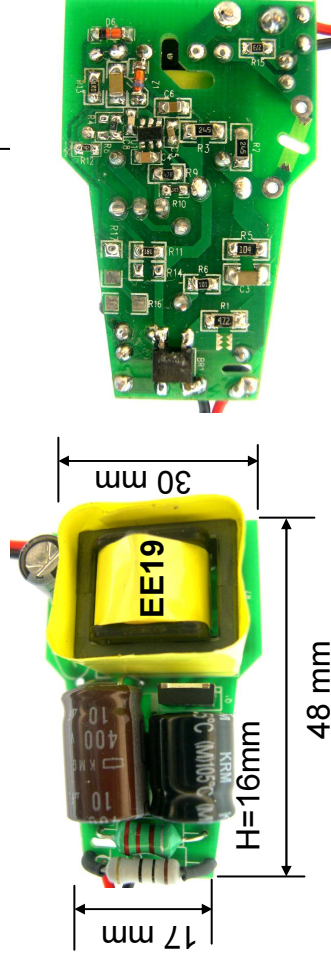
**PGET0818: LED Driver 3X2W**

**Input: 90V-264V; Output: 11V, CC@ 600mA**

**EE19 V transformer, CC tolerance +/-5%**

**PAR30 Efficiency 78%; Isolated ; meet EMI**

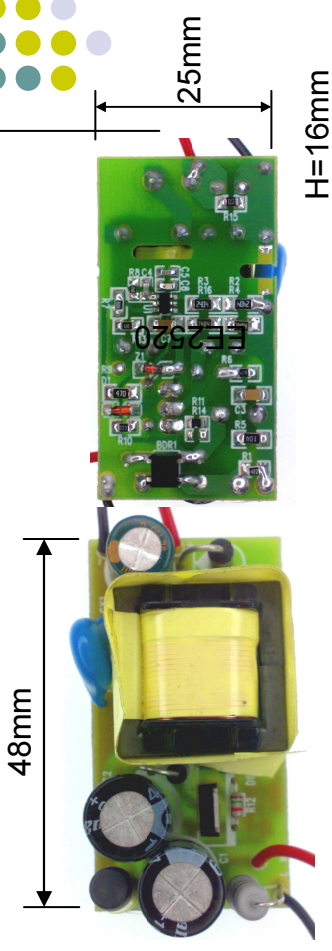
**Type A**



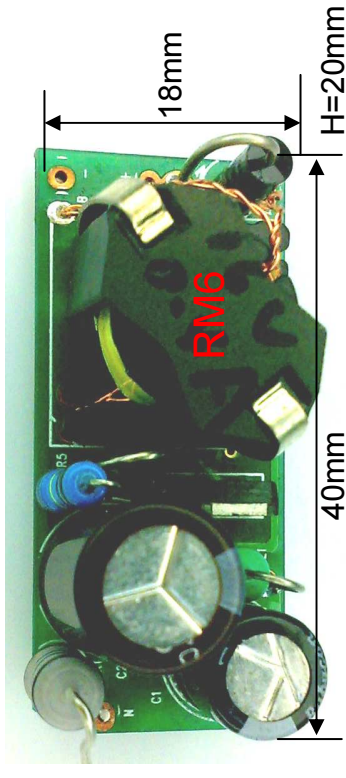
**深圳市盘庚电子有限公司**

**地址: 福田区沙尾西村398号605; 电话/传真: 83586062; 联系人: 陶宣武13500052352**

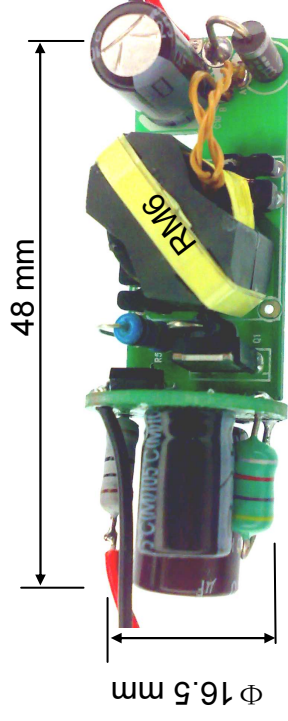
**PGET0819: LED Driver 7X1W**  
**Input: 90V-264V; Output: 24.5V, CC@ 350mA**  
**EE20 transformer, CC tolerance +/-5%**  
**Efficiency 82%; Isolated ; meet EMI**



**PGET0820: LED Driver 5X2W**  
**Input: 90V-264V; Output: 18V, CC@ 450mA**  
**RM6 transformer, CC tolerance +/-5%**  
**Efficiency 83%; Isolated ; meet EMI**



**PGET0821: LED Driver 3X3W**  
**Input: 90V-264V; Output: 11V, CC@ 700mA**  
**RM6 transformer, CC tolerance +/-5%**  
**Efficiency 82%; Isolated ; meet EMI**



**深圳市盘庚电子有限公司**

**地址: 福田区沙尾西村398号605; 电话/传真: 83586062; 联系人: 陶宣武13500052352**

**PGET0822: LED Driver 10X1W**

**Input: 90V-264V; Output: 35V, CC@ 350mA**

**RM8 transformer, CC tolerance +/-5%  
Efficiency 83%; Isolated ; meet EMI**

**PGET0823: LED Driver 12X1W**

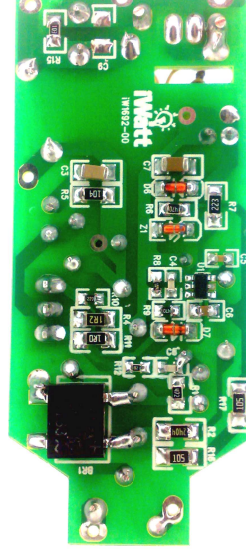
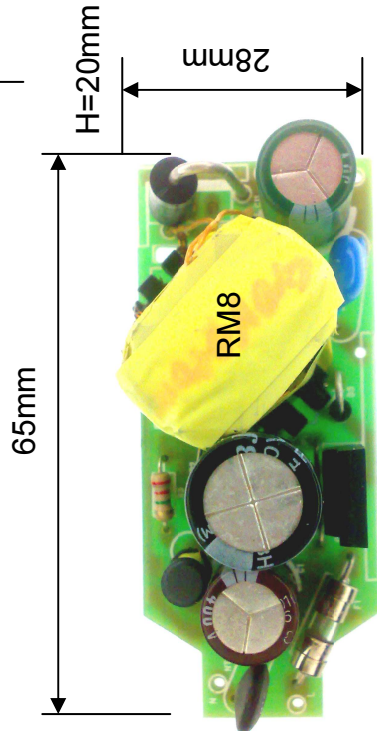
**Input: 90V-264V; Output: 40V, CC@ 350mA**

**RM8 transformer, CC tolerance +/-5%  
Efficiency 84%; Isolated ; meet EMI**

**PGET0824: LED Driver 6X3W**

**Input: 90V-264V; Output: 22V, CC@ 700mA**

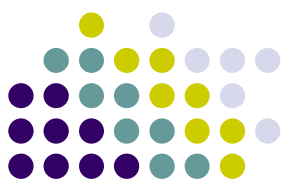
**RM8 transformer, CC tolerance +/-5%  
Efficiency 84%; Isolated ; meet EMI**



**深圳市盘庚电子有限公司**

**地址：福田区沙尾西村398号605； 电话/传真： 83586062； 联系人： 陶宣武13500052352**

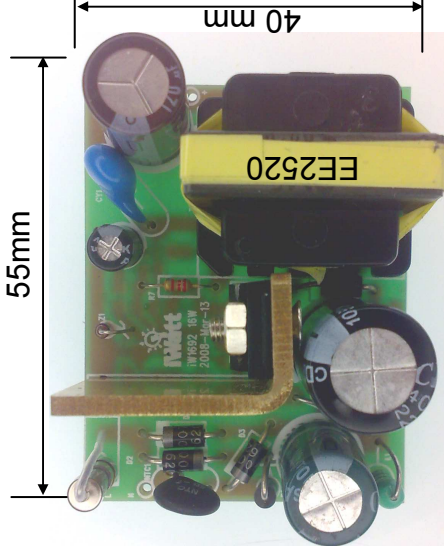




**PGET0825: LED Driver 10X1W**

**Input: 90V-264V; Output: 35V, CC@ 350mA**

**EE2520 transformer, CC tolerance +/-5%  
Efficiency 84%; Isolated ; meet EMI**

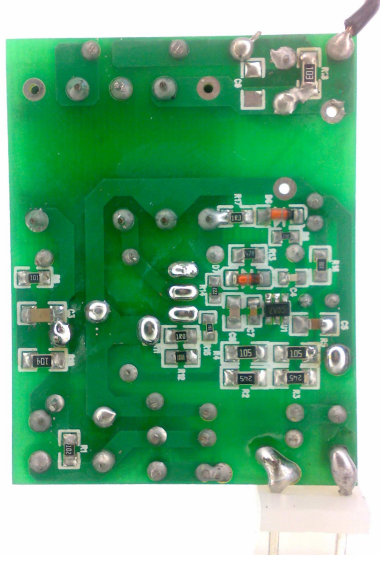


H=25mm

**PGET0826: LED Driver 12X1W**

**Input: 90V-264V; Output: 40V, CC@ 350mA**

**EE2520 transformer, CC tolerance +/-5%  
Efficiency 84%; Isolated ; meet EMI**



**PGET0827: LED Driver 7X3W**

**Input: 90V-264V; Output: 27V, CC@ 700mA**

**EE2520 transformer, CC tolerance +/-5%  
Efficiency 84%; Isolated ; meet EMI**

**Product solutions:**

**13W LED \_\_\_ 18V 0.7A  $\eta$ =83%**

**19W LED \_\_\_ 27V 0.7A  $\eta$ =85%**

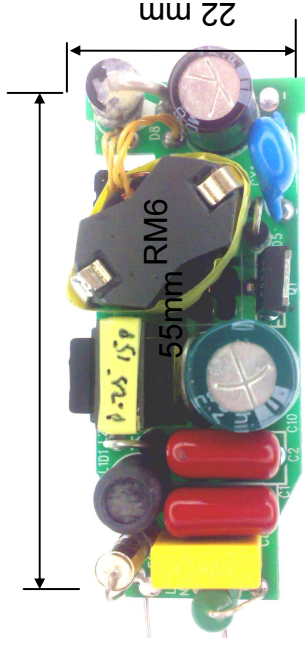
**21W LED \_\_\_ 62V0.30A  $\eta$ =85%**

**深圳市盘庚电子有限公司**

**地址：福田区沙尾西村398号605； 电话/传真： 83586062； 联系人： 陶宣武13500052352**

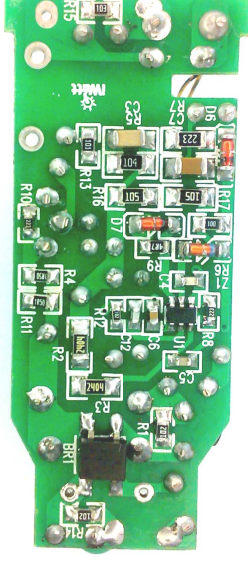


**PGET0828: LED Driver 5X1W**  
**Input: 90V-264V; Output: 16V, CC@ 350mA**  
**RM6 transformer, CC tolerance +/-5%**  
**Efficiency 82%; Isolated ; meet EMI**  
**High PF and low harmonic**



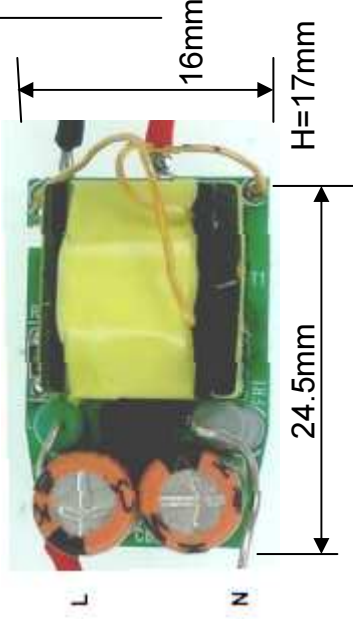
H=12mm

**PGET0829: LED Driver 3X3W**  
**Input: 90V-264V; Output: 11V, CC@ 500mA**  
**RM6 transformer, CC tolerance +/-5%**  
**Efficiency 80%; Isolated ; meet EMI**  
**High PF and low harmonic**



深圳市盘庚电子有限公司

地址：福田区沙尾西村398号605； 电话/传真： 83586062； 联系人： 陶宣武13500052352



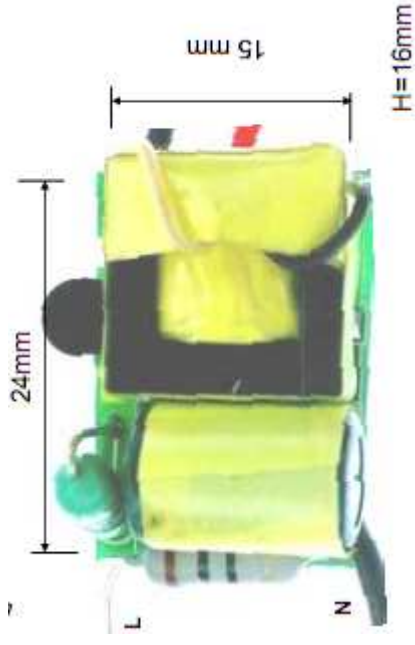
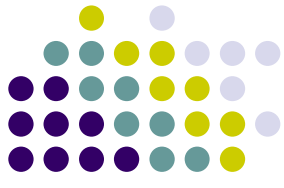
**PGET0901: LED Driver 1X1W**  
**Input: 90V-264V; Output: 3.5V, CC@ 350mA**  
**EE13 transformer, CC tolerance +/-5%**  
**Efficiency 65%; Isolated ; meet EMI**

**PGET0902: LED Driver 1X3W**  
**Input: 90V-264V; Output: 3.5V, CC@ 700mA**  
**EE13 transformer, CC tolerance +/-5%**  
**Efficiency 70%; Isolated ; meet EMI**

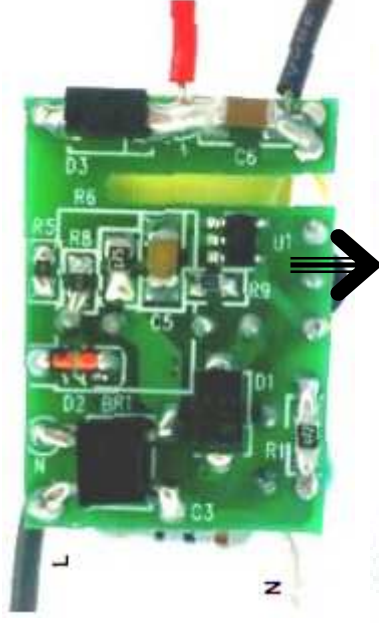
**PGET0903: LED Driver 3X1W**  
**Input: 90V-264V; Output: 10.5V, CC@ 350mA**  
**EE13 transformer, CC tolerance +/-5%**  
**Efficiency 76%; Isolated ; meet EMI**

**深圳市盘庚电子有限公司**

**地址: 福田区沙尾西村398号605; 电话/传真: 83586062; 联系人: 陶宣武13500052352**



**PGET0904: LED Driver 1X1W**  
**Input: 90V-264V; Output: 3.5V, CC@ 350mA**  
**EPC13 transformer, CC tolerance +/-5%**  
**Efficiency 65%; Isolated ; meet EMI**



**PGET0905: LED Driver 1X3W**  
**Input: 90V-264V; Output:3.5V, CC@ 700mA**  
**EPC13 transformer, CC tolerance +/-5%**  
**Efficiency 70%; Isolated ; meet EMI**

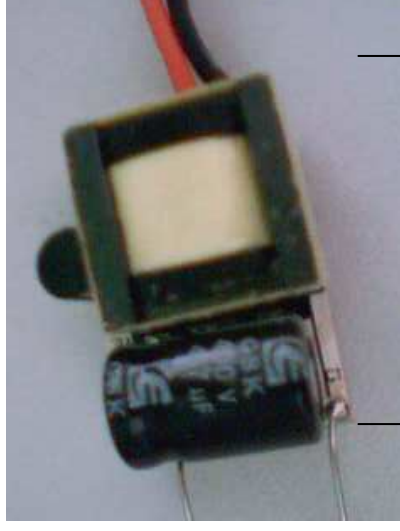


**PGET0906: LED Driver 3X1W**  
**Input: 90V-264V; Output: 10.5V, CC@ 350mA**  
**EPC13 transformer, CC tolerance +/-5%**  
**Efficiency 76%; Isolated ; meet EMI**





**PGET0907: LED Driver 1X1W**  
**Input: 90V-264V; Output: 3.5V, CC@ 350mA**  
**EPC13 transformer, CC tolerance +/-5%**  
**Efficiency 65%; Isolated**



16mm  
H=13mm

**PGET0908: LED Driver 1X3W**  
**Input: 90V-264V; Output: 3.5V, CC@ 700mA**  
**EPC13 transformer, CC tolerance +/-5%**  
**Efficiency 70%; Isolated**



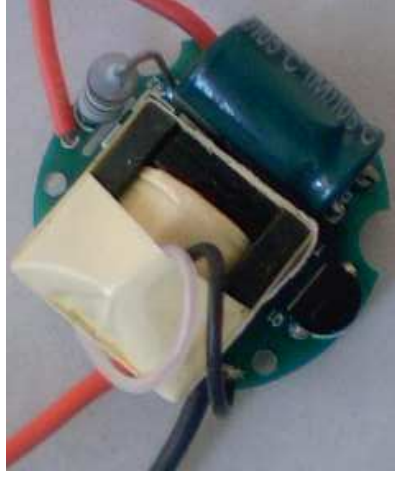
**PGET0909: LED Driver 3X1W**  
**Input: 90V-264V; Output: 10.5V, CC@ 350mA**  
**EPC13 transformer, CC tolerance +/-5%**  
**Efficiency 76%; Isolated**



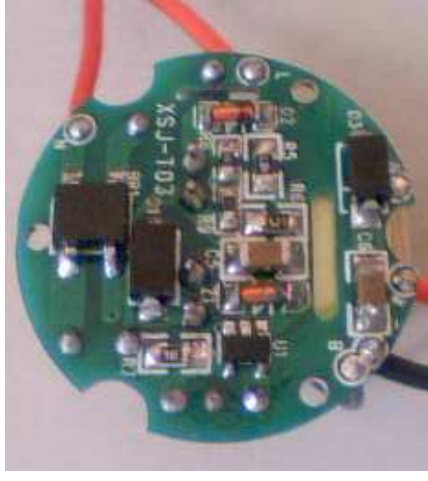
**深圳市盘庚电子有限公司**  
**地址: 福田区沙尾西村398号605; 电话/传真: 83586062; 联系人: 陶宣武13500052352**



**PGET0910: LED Driver 1X1W**  
**Input: 90V-264V; Output: 3.5V, CC@ 350mA**  
**EPC13 transformer, CC tolerance +/-5%**  
**Efficiency 65%; Isolated**



**PGET0911: LED Driver 1X3W**  
**Input: 90V-264V; Output: 3.5V, CC@ 700mA**  
**EPC13 transformer, CC tolerance +/-5%**  
**Efficiency 70%; Isolated**



**PGET0912: LED Driver 3X1W**  
**Input: 90V-264V; Output: 10.5V, CC@ 350mA**  
**EPC13 transformer, CC tolerance +/-5%**  
**Efficiency 76%; Isolated**



**深圳市盘庚电子有限公司**

**地址: 福田区沙尾西村398号605; 电话/传真: 83586062; 联系人: 陶宣武13500052352**

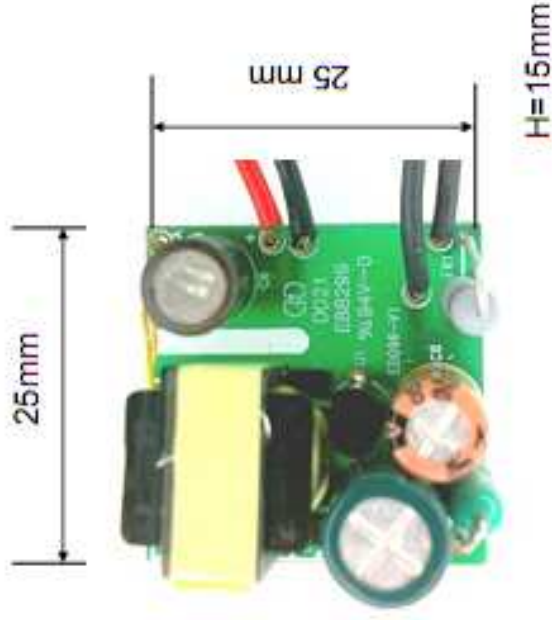


**PGET0913: LED Driver 1X3W**

**Input: 90V-264V; Output: 5V, CC@ 700mA**

**EE13 transformer, CC tolerance +/-5%**

**Efficiency 70%; Isolated ; meet EMI**



**PGET0914: LED Driver 3X1W**

**Input: 90V-264V; Output: 12V, CC@ 350mA**

**EE13 transformer, CC tolerance +/-5%**

**Efficiency 76%; Isolated ; meet EMI**



**深圳市盘庚电子有限公司**

**地址：福田区沙尾西村398号605；电话/传真：83586062；联系人：陶宣武13500052352**



**PGET0915: LED Driver 7X1W**  
Input: 90V-264V; Output: 24.5V, CC@ 350mA  
EE20 transformer, CC tolerance +/-5%  
Efficiency 82%; Isolated ; **meet EMI for FCC**



**PGET0916: LED Driver 5X2W**  
Input: 90V-264V; Output: 18V, CC@ 450mA  
RM6 transformer, CC tolerance +/-5%  
Efficiency 83%; Isolated ; **meet EMI for FCC**

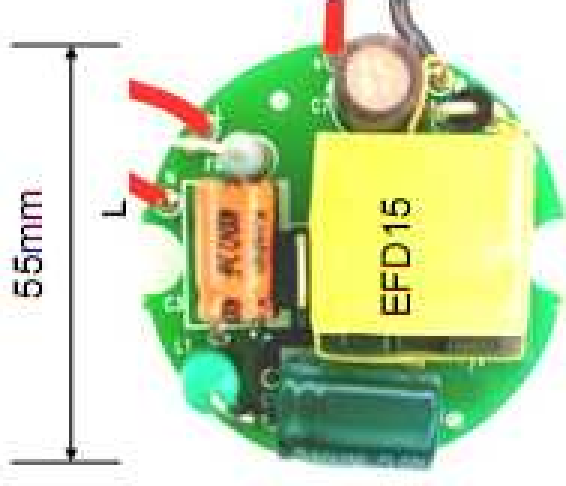


**PGET0917: LED Driver 3X3W**  
Input: 90V-264V; Output: 11V, CC@ 700mA  
RM6 transformer, CC tolerance +/-5%  
Efficiency 82%; Isolated ; **meet EMI for FCC**

深圳市盘庚电子有限公司

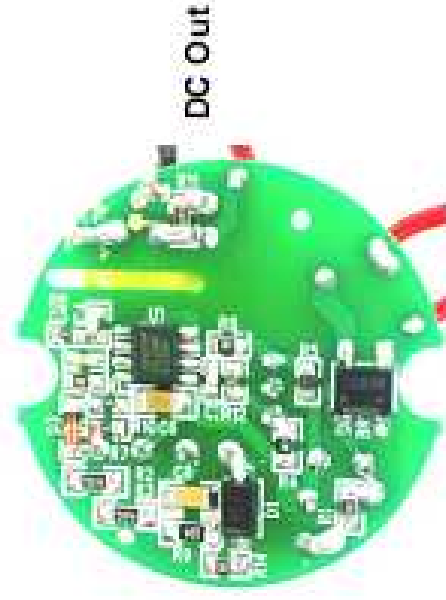
地址：福田区沙尾西村398号605；电话/传真：83586062；联系人：陶宣武13500052352





**PGET0918: LED Driver 5X1W**  
**Input: 90V-264V; Output: 18V, CC@ 350mA**  
**EFD15 transformer, CC tolerance +/-5%**  
**Efficiency 83%; Isolated ; meet EMI**

H=13mm



**PGET0919: LED Driver 3X2W**  
**Input: 90V-264V; Output: 12V, CC@ 500mA**  
**EFD15 transformer, CC tolerance +/-5%**  
**Efficiency 81%; Isolated ; meet EMI**

**深圳市盘庚电子有限公司**

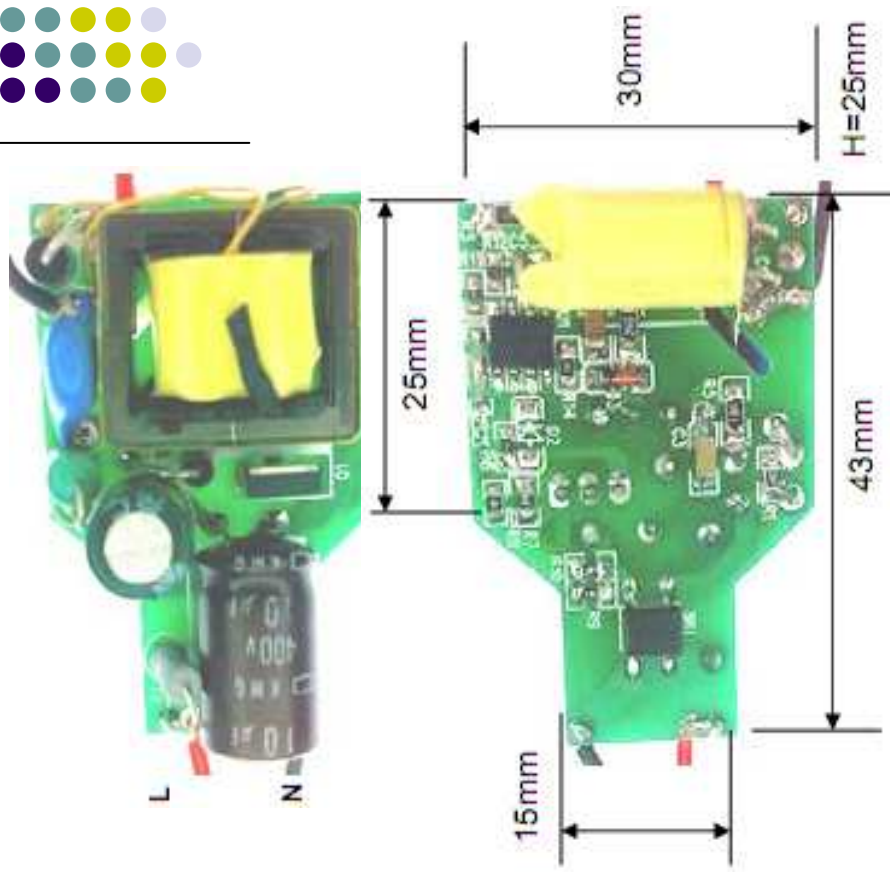
**地址：福田区沙尾西村398号605；电话/传真：83586062；联系人：陶宣武13500052352**



**PGET0920: LED Driver 7X1W**  
**Input: 90V-264V; Output: 24.5V, CC@ 350mA**  
**EE1916 transformer, CC tolerance +/-5%**  
**Efficiency 83%; Isolated ; meet EMI**

**PGET0921: LED Driver 5X2W**  
**Input: 90V-264V; Output: 18V, CC@ 500mA**  
**EE1916 transformer, CC tolerance +/-5%**  
**Efficiency 82%; Isolated ; meet EMI**

**PGET0922: LED Driver 3X3W**  
**Input: 90V-264V; Output: 12V, CC@ 700mA**  
**EE1916 transformer, CC tolerance +/-5%**  
**Efficiency 82%; Isolated ; meet EMI**



**深圳市盘庚电子有限公司**

**地址: 福田区沙尾西村398号605; 电话/传真: 83586062; 联系人: 陶宣武13500052352**



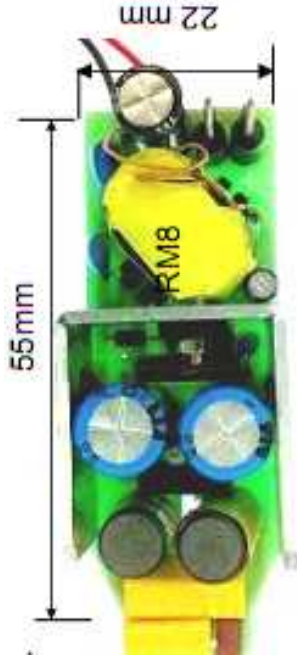
**PGET0923: LED Driver 10X3W**

**Input: 90V-264V; Output: 42V, CC@ 700mA**

**RM8 transformer, CC tolerance +/-5%**

**Efficiency 87%; Isolated ; meet EMI**

**Passive PFC>0.85 Low harmonic**



**PGET0924: LED Driver 15X1W**

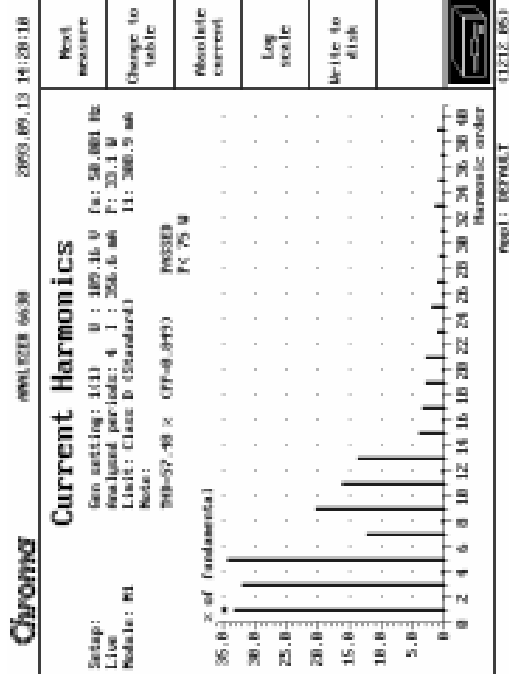
**Input: 90V-264V; Output: 55V, CC@ 350mA**

**RM8 transformer, CC tolerance +/-5%**

**Efficiency 88%; Isolated ; meet EMI**

**Passive PFC>0.85 Low harmonic**

H=12mm



PAR 38



**深圳市盘庚电子有限公司**

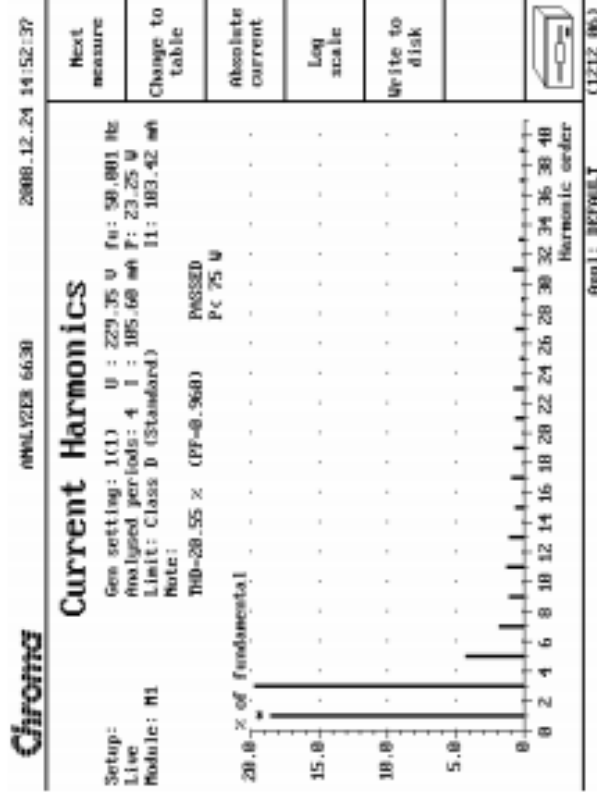
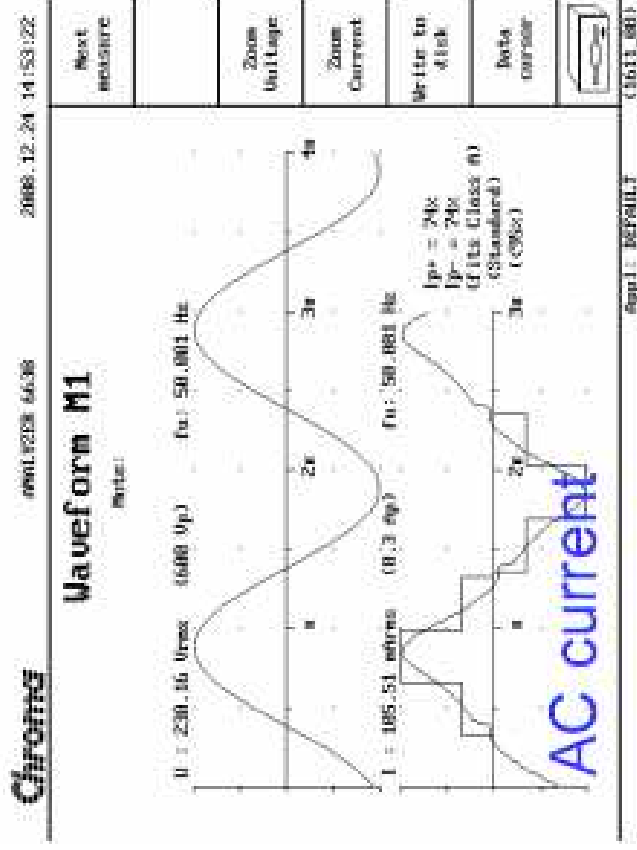
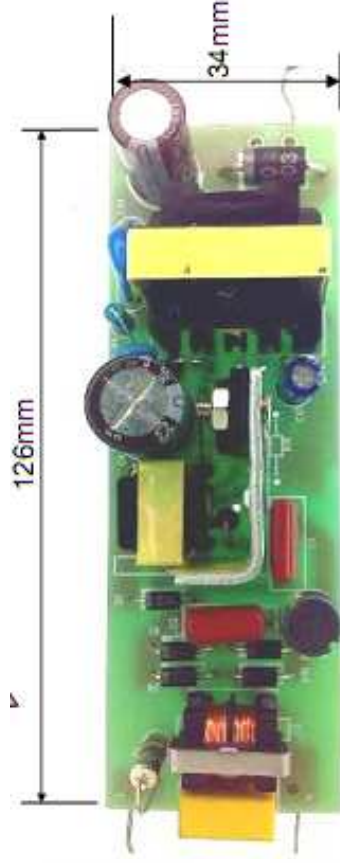
**地址: 福田区沙尾西村398号605; 电话/传真: 83586062; 联系人: 陶宣武13500052352**



PGET0925: LED Driver 7X3W

Input: 90V-264V; Output: 24V, CC@ 700mA

EE2520 transformer, CC tolerance +/-5%  
Efficiency 84%; Isolated ; meet EMI



深圳市盘庚电子有限公司

地址: 福田区沙尾西村398号605; 电话/传真: 83586062; 联系人: 陶宣武13500052352





**PGET0926: LED Driver 12W**

**Input: 90V-264V; Output: 22V, CC@ 550mA**

**EE1916 transformer, CC tolerance +/-5%  
Efficiency 84%; Isolated ; meet EMI**



**PGET0927: LED Driver 10W**

**Input: 90V-264V; Output: 35V, CC@ 350mA**

**EPC17 transformer, CC tolerance +/-5%  
Efficiency 84%; Isolated ; meet EMI**



**PGET0928: LED Driver 10W**

**Input: 90V-264V; Output: 40V, CC@ 250mA**

**2\*EFD15 transformer, CC tolerance +/-5%  
Efficiency 84%; Isolated ; meet EMI**



**深圳市盘庚电子有限公司**

**地址: 福田区沙尾西村398号605; 电话/传真: 83586062; 联系人: 陶宣武13500052352**



## Regulation for LED\_PF & Harmonic current

LED 燈	被動式或電子 式安定器(或變 壓器)	有或無  ≥ 25W, IEC 61000-3-2, 表 3.4.2. Class C ≤ 25W 無限制值要求
-------	--------------------------	---

### B IEC61000-3-2

#### 7.3 Limits for Class C equipment

##### 7.3.1 Lighting equipment

##### a) Active input power >25 W

For lighting equipment having an active input power >25 W, the harmonic currents shall not exceed the relative limits given in table 2.

##### b) Active input power ≤25 W

Lighting equipment having an active input power ≤25 W shall comply with one of the following two sets of requirements:

1) the harmonic currents shall not exceed the power-related limits of table 3, column 2;

NOTE The lower limit of 75 W or 50 W for the application of Class D (see 7.4) is not valid in this case.

2) the third harmonic current, expressed as a percentage of the fundamental current, shall not exceed 86 % and the fifth shall not exceed 61 %; moreover, the waveform of the input current shall be such that it begins to flow before or at 60°, has its last peak (if there are several peaks per half period) before or at 65° and does not stop flowing before 90°, where the zero crossing of the fundamental supply voltage is assumed to be at 0°.

**C** The magnitude of the input current harmonic is normalized to the fundamental input current component with a 120V source voltage since it has the highest magnitude.

The overall input harmonic current magnitudes of the 120V input voltage is approximately 1.92 times bigger than one with 230V

深圳市盘庚电子有限公司

地址：福田区沙尾西村398号605； 电话/传真： 83586062； 联系人： 陶宣武13500052352



# Regulation \_Insulation and Electric strength test spec.\_IEC60968

## 7 Insulation resistance and electric strength after humidity treatment

Insulation resistance and electric strength shall be adequate between current-carrying metal parts of the lamp and accessible parts of the lamp.

### 7.1 Insulation resistance

The lamp shall be conditioned for 48 h in a cabinet containing air with a relative humidity between 91 % and 95 %. The temperature of the air is maintained within 1 °C of any convenient value between 20 °C and 30 °C.

Insulation resistance shall be measured in the humidity cabinet with a d.c. voltage of approximately 500 V, 1 min after application of the voltage. The insulation resistance between current-carrying metal parts of the cap and accessible parts of the lamp (accessible parts of insulating material are covered with metal foil) shall be not less than 4 M $\Omega$ .

NOTE The insulation resistance of bayonet caps between shell and contacts is under consideration.

### 7.2 Electric strength

Immediately after the insulation resistance test, the same parts as specified above shall withstand a voltage test for 1 min with an a.c. voltage as follows:

- ES caps: between accessible parts and parts of screw caps (accessible parts of insulating material are covered with metal foil):

- type HV (220 V to 250 V): 4 000 V r.m.s.
- type BV (100 V to 120 V):  $2U + 1\ 000\ V$

Value  $U$  = rated voltage.

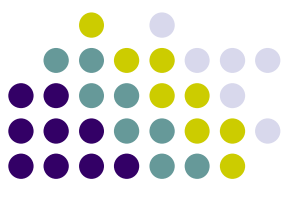
During the test the eyelet and the shell of the cap are short-circuited.

Initially no more than half the prescribed voltage is applied. It is then gradually raised to the full value.

深圳市盘庚电子有限公司

地址：福田区沙尾西村398号605；电话/传真：83586062；联系人：陶宣武13500052352





## Regulation for LED\_EMC Standard \_according to ballast

各國對電子式安定器之電磁相容性(EMC)測試規定比較

國家	驗證制度	黏貼標誌	法規標準
歐盟	符合性宣告		EN 55015 EN 61547 EN 61000-3-2 EN 61000-3-2
美國	符合性宣告或型式驗證		無列入管制範圍 但需做符合性宣告及測試
台灣	驗證登錄		CNS 14115 (限檢驗一般室內照明燈具類)
日本	符合性宣告或型式驗證		J55001(H14)
大陸	驗證登錄		GB-17743 GB-18595

FCC part18

CISPR 15 照明設備之電磁干擾限制值與量測方法

IEC 61547 照明設備之電磁耐受性要求標準

IEC 61000-3-2 每相額定電流在16A 以下且連接於電源公共網路系統中諧波干擾限制及量測方法

IEC 61000-3-3 每相額定電流在16A 以下且連接於電源公共網路系統中電壓改變、電源變動及閃爍干擾限制

深圳市盘庚电子有限公司

地址：福田区沙尾西村398号605； 电话/传真： 83586062； 联系人： 陶宣武13500052352





## Regulation for LED\_EMS

照明設備電磁耐受性(EMS)測試要求

照明設備電磁耐受性(EMS)測試要求							
照明產品	靜電放電 (ESD)	輻射耐受 (RS)	電子快速暫態 (EFT)	雷擊耐受 (Surge)	傳導耐受 (CS)	電源頻率磁場 (PFMF)	電壓降及瞬間變動 (DIP)
基本標準	IEC 61000-4-2	IEC 61000-4-3	IEC 61000-4-4	IEC 61000-4-5	IEC 61000-4-6	IEC 61000-4-8	IEC 61000-4-11
測試要求	1) ±8kV 空間放電 2) ±4kV 接觸放電	1) 頻率 80-1000MHz 2) 場強 3V/m, 3) 振幅 1kHz, 80% AM 正弦	1) 電壓±0.5kV 對控制線、信號線及直線輸入和輸出埠 2) 電壓±1kV 對交流輸入及輸出埠 3) Tr/Td 5ns/50ns 4) 重複頻率 5kHz	1) Tr/Td 1.2/50 μs (8/20μs), 2) 小於 25W 線對線 0.5kV 線對地 1.0kV 3) 大於 25W 線對線 1kV 線對地 2kV	1) 頻率 0.15-80MHz, 2) 場強 3Vrms, 3) 振幅 1kHz, 80% AM, 正弦 4) 信號源阻抗 150Ω	1) 電源頻率 50/60Hz, 2) 磁場 3A/m 連續	1) 電壓瞬降 30%-10cyc 2) 電壓中斷 100%-0.5cyc

深圳市盤庚电子有限公司

地址：福田區沙尾西村398號605；電話/傳真：83586062；聯繫人：陶宣武13500052352