





# MPW2000 Series

---

## Output Specifications

<i>Parameter</i>	<i>Conditions</i>	<i>Min.</i>	<i>Typ.</i>	<i>Max.</i>	<i>Unit</i>

## General Specifications

<i>Parameter</i>	<i>Conditions</i>	<i>Min.</i>	<i>Typ.</i>	<i>Max.</i>	<i>Unit</i>

## Remote On/Off Control

<i>Parameter</i>	<i>Conditions</i>	<i>Min.</i>	<i>Typ.</i>	<i>Max.</i>	<i>Unit</i>

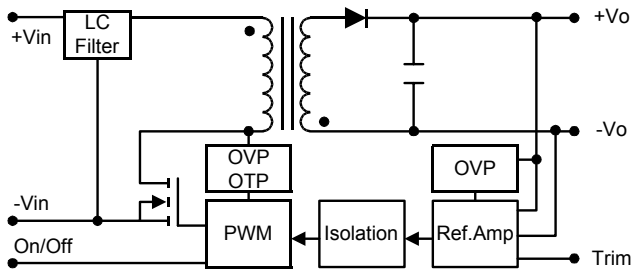
## Output Voltage Trim

<i>Parameter</i>	<i>Conditions</i>	<i>Min.</i>	<i>Typ.</i>	<i>Max.</i>	<i>Unit</i>

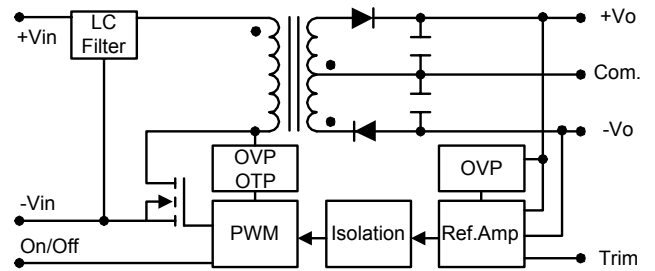
Notes1:

## Block Diagram

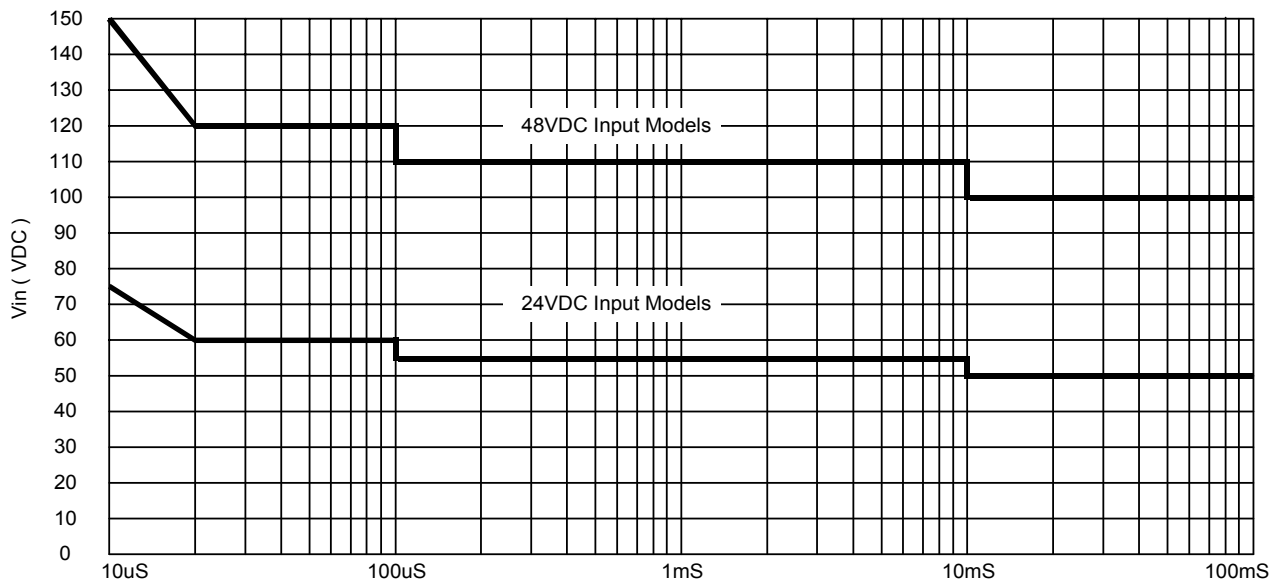
### Single Output



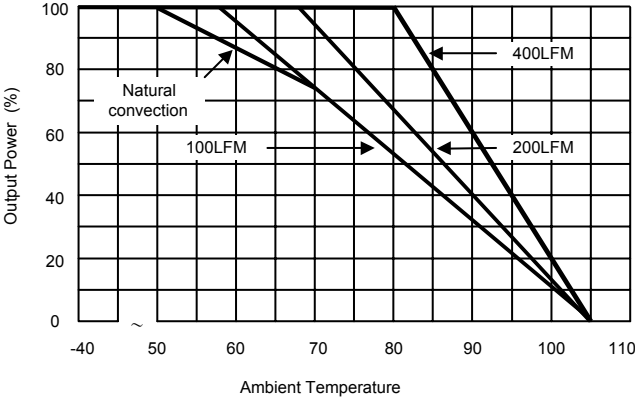
### Dual Output



## Input Voltage Transient Rating



# MPW2000 Series

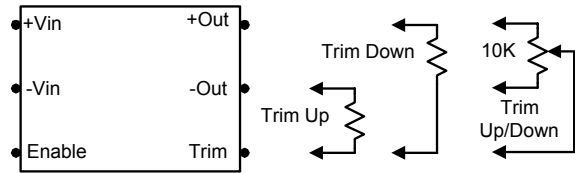
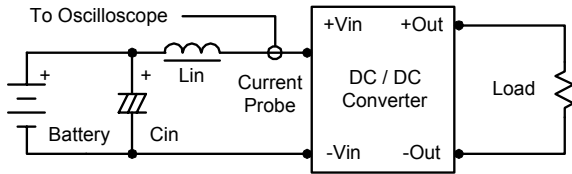


**Derating Curve**

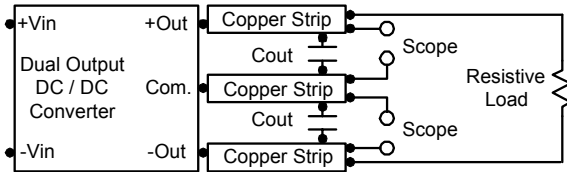
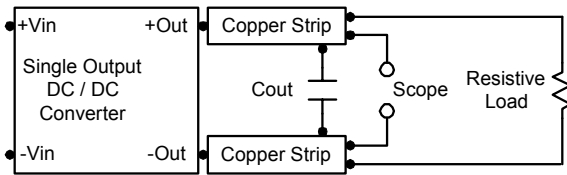
## Test Configurations

## Output Voltage Trim

### Input Reflected-Ripple Current Test Setup



### Peak-to-Peak Output Noise Measurement Test



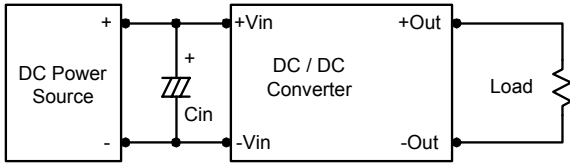
## Design & Feature Considerations

### Remote On/Off

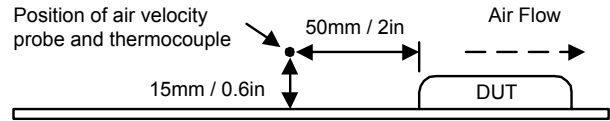
### Overcurrent Protection

### Overvoltage Protection

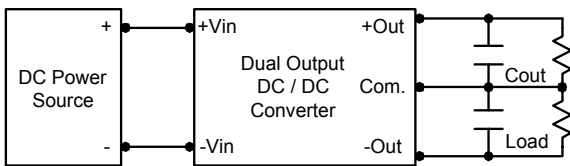
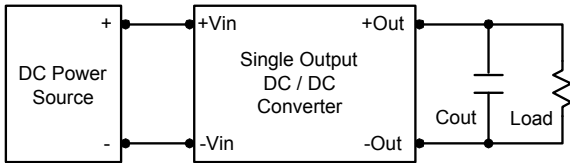
## Input Source Impedance



## Thermal Considerations

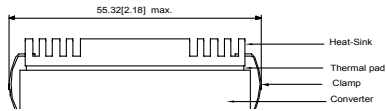
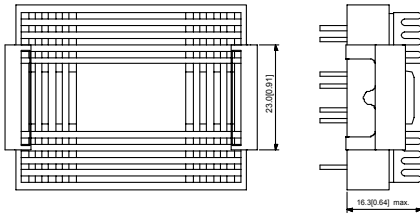
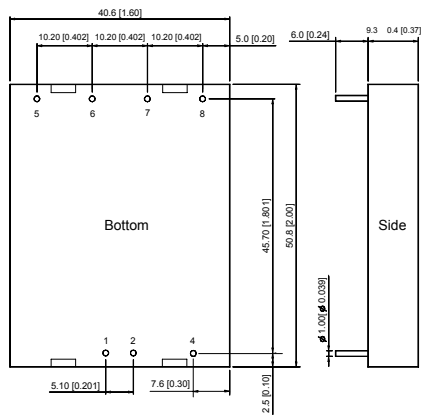


## Output Ripple Reduction



## Maximum Capacitive Load

## Mechanical Dimensions



**Tolerance      Millimeters      Inches**

**Pin**

**Notes2:**

## Physical Characteristics

**Case Size** :

**Case Material** :

**Weight** :

**Flammability** :

**Heat-sink Material** :

**Finish** :

**Weight** :

**The advantages of adding a heatsink are:**

## Pin Connections

Pin	Single Output	Dual Output