

DW8501_EVB Manual

DONGWOON
ANATECH

July. 21st . 2009
R&D Division

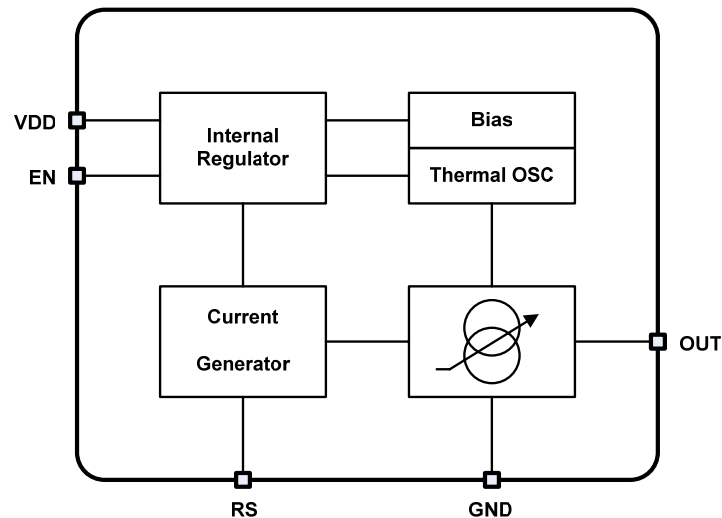
Features

- 5V to 40V Supply voltage
- Regulated output current up to 1.5A adjustable
- Low dropout voltage : Max. 1V @ I_{LED}=1A
- Built-in thermal shutdown circuit
- Available PWM dimming control
- Thermal enhanced package
SOT223-5L, TO252-5L

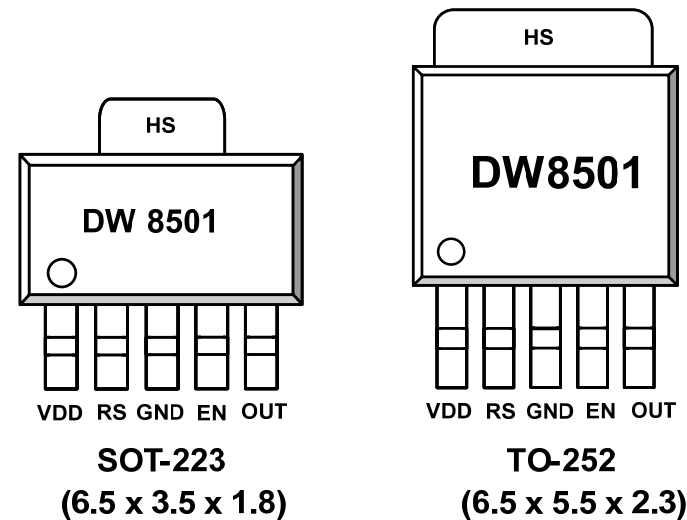
Applications

- LED light bulbs
- Signage and decorative LED lighting
- General lighting of flat panel displays
- Automotive
- RGB backlighting LED driver
- Current stabilizer with DC/DC or AC/DC
- General purpose constant current source

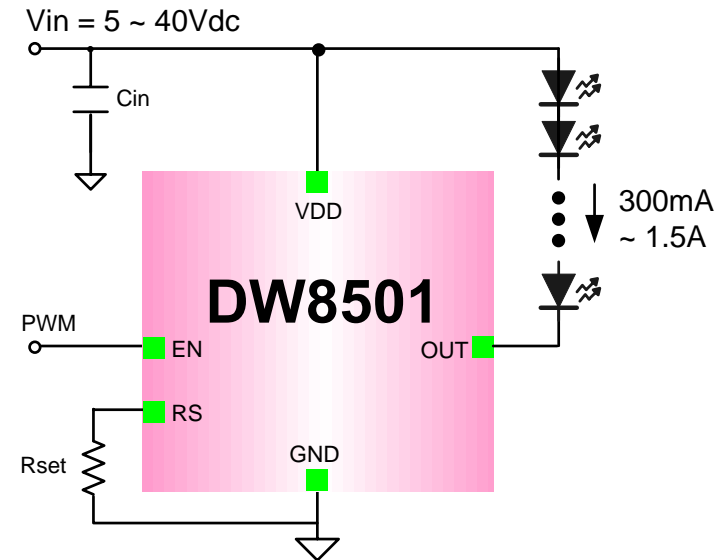
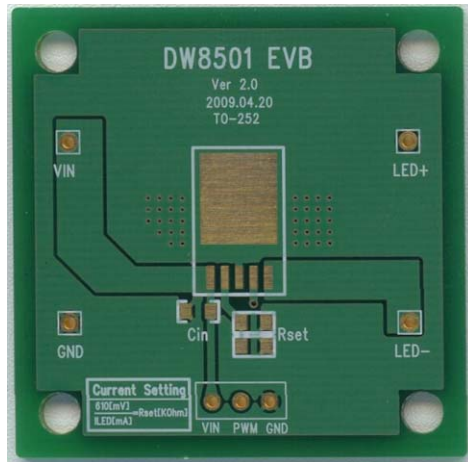
Block Diagram



Package



Promotion Board

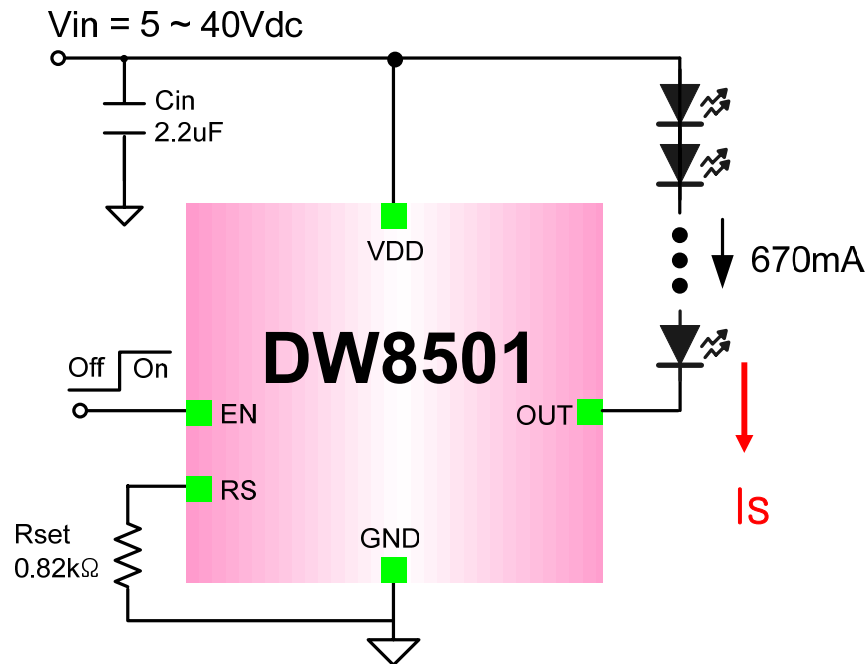


$$I_{out} [mA] = (610(mV)/R_{set} (\Omega)) \times 1000$$

Pin Description

Pin No.	Symbol	Description
1	VDD	Supply voltage input.
2	RS	Output current set input. Connect a resistor from RS to GND to set the LED bias current
3	GND	Ground
4	EN	Output stage enable control pin. High enable the OUT pin. It can be left floating for normally on.
5	OUT	Output pin. Sink current is decided by the current on Rset connected to RS
6	HS	Heat sink, normally connected GND

Application Circuit



Rset(kΩ)	Is(mA)
2	300
1.53	400
1.22	500
1.02	600
0.87	700
0.76	800
0.68	900
0.61	1000
0.51	1200
0.41	1500

Board 电流设定成 670mA，电流可以用 Rset 可调的。
[Target Current $I_s = (610\text{mV}/R_{\text{set}}(\Omega)) * 1000$]