

## ActivePSR™ Primary Switching Regulators

### FEATURES

- Multiple Patent-Pending Primary Side Regulation Technology
- No Opto-Coupler
- Best-in-Class Constant Voltage, Constant Current Over All Accuracy
- Minimum External Components
- Integrated Line and Primary Inductance Compensation
- Integrated Output Cord Resistance Compensation
- Line Under-Voltage Protection
- Short Circuit Protection
- Over Temperature Protection
- Flyback Topology in DCM Operation
- Complies with all Global Energy Efficient Regulations: 0.3W Standby Power and CEC Average Efficiency
- SIP-4 and SOT23-5 Packages

### APPLICATIONS

- Chargers for Cell Phones, PDAs, MP3, Portable Media Players, DSCs, and Other Portable Devices and Appliances
- RCC Adapter Replacements
- Linear Adapter Replacements
- Standby and Auxiliary Supplies

### GENERAL DESCRIPTION

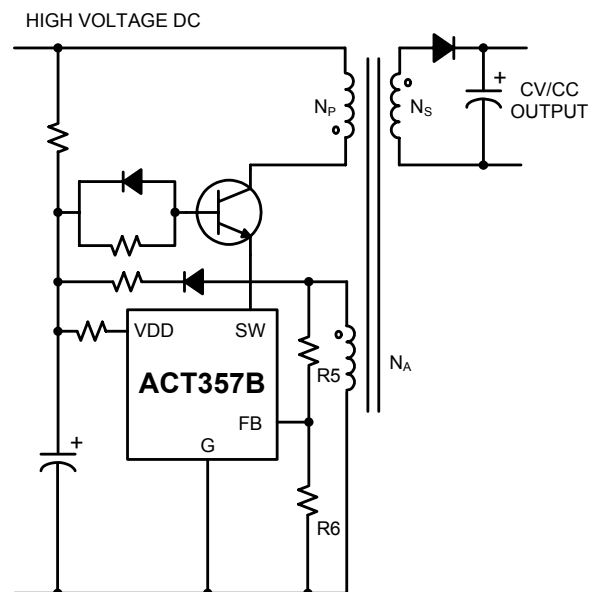
The ACT357B belongs to the high performance, multiple patent-pending family of universal-input AC/DC off-line controllers for battery charger and adapter applications. It is designed for the flyback topology working in a discontinuous conduction mode (DCM). In addition to being industry's most accurate primary side regulator, the ACT357B meets all of the global energy efficiency regulations (CEC, European Blue Angel, and US Energy Star standards) while using very few external components.

The ACT357B ensures safe operation with complete protection against all fault conditions. Built-in protection circuitry is provided for output over-voltage output short-circuit, line under-voltage, and over-temperature conditions.

The ACT357B is optimized for cost-sensitive applications, and utilizes Active-semi's proprietary primary-side feedback architecture to provide accurate constant voltage, constant current (CV/CC) regulation without the need of an opto-coupler or reference device. Integrated line and primary inductance compensation circuitry provides accurate constant current operation despite wide variations in line voltage and primary inductance. Integrated output cord resistance compensation further enhances output accuracy. These products achieve excellent regulation and transient response, yet requires less than 300mW of standby power.

The ACT357B is optimized for 3.5W to 4.5W applications (such as 5V/700mA to 5V/900mA CV/CC chargers). It is available in space-saving 4-pin SIP-4 and 5-pin SOT23-5 packages.

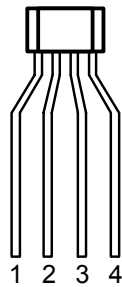
Figure 1:  
Typical Application Circuit



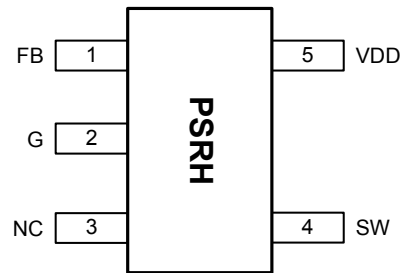
## ORDERING INFORMATION

PART NUMBER	TEMPERATURE RANGE	PACKAGE	PINS	PACKING METHOD	TOP MARK
ACT357BHQ-A	-40°C to 85°C	SIP-4	4	AMMO	ACT357B
ACT357BUC-T	-40°C to 85°C	SOT23-5	5	TAPE & REEL	PSRH

## PIN CONFIGURATION



**SIP-4**  
**ACT357BHQ-A**



**SOT23-5**  
**ACT357BUC-T**

## PIN DESCRIPTIONS

PIN NUMBER		PIN NAME	PIN DESCRIPTION
ACT357BHQ-A	ACT357BUC-T		
1	1	FB	Feedback Pin. Connect to a resistor divider network from the auxiliary winding.
2	5	VDD	Power supply.
3	4	SW	Switch Driver. Connect this pin to the emitter of the power NPN transistor or source of the power MOSFET.
4	2	G	Ground.
	3	NC	No Connection.

## ABSOLUTE MAXIMUM RATINGS<sup>Ⓛ</sup>

PARAMETER		VALUE	UNIT
VDD to G		-0.3 to +23.5	V
Maximum Continuous VDD Current		20	mA
FB to G		-0.3 to +6	V
SW to G		-0.3 to +23.5	V
Continuous SW Current		Internally limited	A
Maximum Power Dissipation	SIP-4 (derate 5mW/°C above T <sub>A</sub> = 50°C)	0.5	W
	SOT23-5 (derate 5.3mW/°C above T <sub>A</sub> = 50°C)	0.53	
Junction to Ambient Thermal Resistance (θ <sub>JA</sub> )	SIP-4	200	°C/W
	SOT23-5	190	
Operating Junction Temperature		-40 to 150	°C
Storage Temperature		-55 to 150	°C
Lead Temperature (Soldering, 10 sec)		300	°C

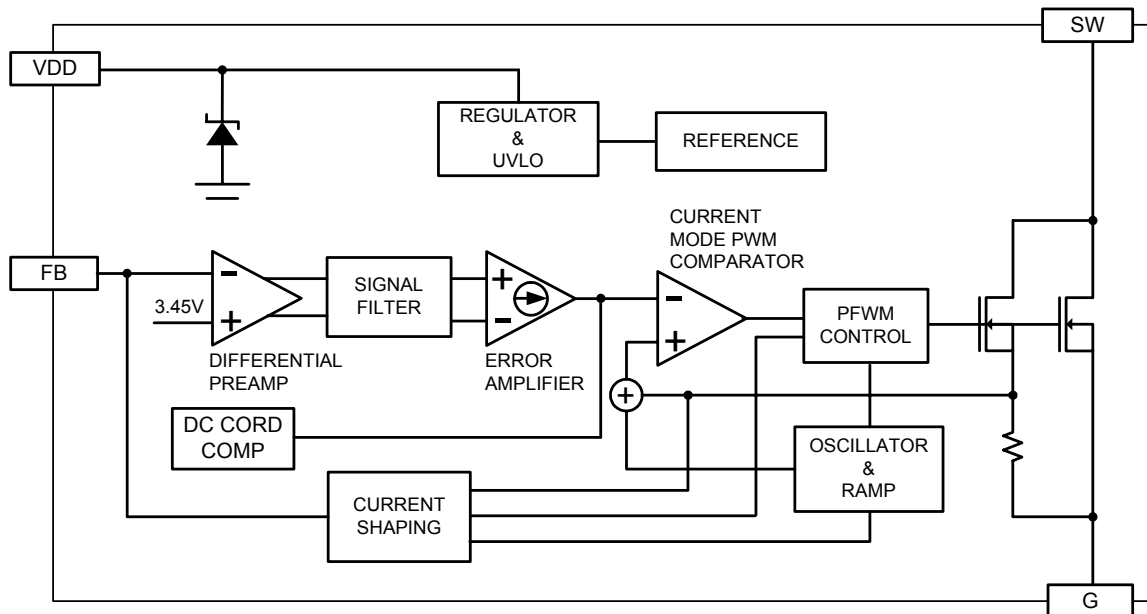
Ⓛ: Do not exceed these limits to prevent damage to the device. Exposure to absolute maximum rating conditions for long periods may affect device reliability.

## ELECTRICAL CHARACTERISTICS

(V<sub>DD</sub> = 15V, V<sub>OUT</sub> = 5V, L<sub>P</sub> = 2mH, N<sub>P</sub> = 130, N<sub>S</sub> = 10, N<sub>A</sub> = 32, T<sub>A</sub> = 25°C, unless otherwise specified.)

PARAMETER	SYMBOL	TEST CONDITIONS	MIN	TYP	MAX	UNIT
VDD Turn-On Voltage	V <sub>DDON</sub>	V <sub>DD</sub> Rising	17.2	19.2	22.0	V
VDD Turn-Off Voltage	V <sub>DDOFF</sub>	V <sub>DD</sub> Falling	7	7.5	8	V
VDD OVP Trigger Voltage	V <sub>DDOVP</sub>		19.0	20.2	22.5	V
Supply Current	I <sub>DD</sub>			1	2	mA
Start Up Supply Current	I <sub>DDST</sub>	V <sub>DD</sub> = 15V, before turn-on		30	55	μA
Effective Feedback Voltage	V <sub>FB</sub>	FB in Regulation	3.38	3.45	3.52	V
Output Cord Resistance Compensation		Maximum Output Power		+3.7		%
Primary Current Limit	I <sub>LIM</sub>			380		mA
Maximum Duty Cycle	D <sub>MAX</sub>	I <sub>SW</sub> = 10mA	80	86	92	%
Switch On-Resistance	R <sub>ON</sub>	I <sub>SW</sub> = 50mA		3.5	5	Ω
SW Rise Time		1nF load, 15Ω pull-up		30		ns
SW Fall Time		1nF load, 15Ω pull-up		20		ns
SW Off Leakage Current		Switch in off-state, V <sub>SW</sub> = 22V		1	10	μA
Over-Temperature Threshold				160		°C

## FUNCTIONAL BLOCK DIAGRAM



## FUNCTIONAL DESCRIPTION

As shown in the *Functional Block Diagram*, the ACT357B feedback regulation is done via several circuit blocks to pre-amplify the FB pin error voltage relative to an internal reference, filter out the switching transients, and integrate the resulting useful differential error voltage for current mode PFWM (Pulse Frequency and Width Modulation) control.

SW is a driver output that drives the emitter of an external high voltage NPN transistor or N-channel MOSFET. This emitter-drive method takes advantage of the high  $V_{CBO}$  of the transistor, allowing a low cost transistor such as '13003 ( $V_{CBO} = 700V$ ) or '13002 ( $V_{CBO} = 600V$ ) to be used for a wide AC input range.

### Startup Mode

VDD is the power supply terminal for the IC. During startup, the IC typically draws 30 $\mu$ A supply current. The bleed resistor from the rectified high voltage DC rail supplies current to VDD until it exceeds the  $V_{DDON}$  threshold of 19.2V. At this point, the IC enters normal operation when switching begins and the output voltage begins to rise. The VDD bypass capacitor must supply the IC and the NPN base drive until the output voltage builds up enough to provide power from the auxiliary winding to sustain the VDD. The  $V_{DDOFF}$  threshold is 7.5V, and therefore, the voltage on the VDD capacitor must not drop more than 10V while the output is charging up.

### Constant Voltage (CV) Mode

In constant voltage operation, the IC captures the auxiliary flyback signal at FB pin through a resistor divider network R5 and R6 in Figure 1. The FB pin is pre-amplified against the reference voltage, and the secondary side output voltage error is extracted based on Active-Semi's proprietary filter architecture. This error signal is then integrated by the Error Amplifier.

When the secondary output voltage is above regulation, the Error Amplifier output voltage decreases to reduce the switch current. When the secondary side is below regulation, the Error Amplifier output voltage increases to ramp up the switch current to bring the secondary output back to regulation. The output regulation voltage is determined by the following relationship:

$$V_{OUTCV} = 3.45V \times \left(1 + \frac{R5}{R6}\right) \left(\frac{N_S}{N_A}\right) - V_F \quad (1)$$

where R5 and R6 are top and bottom feedback resistor,  $N_S$  and  $N_A$  are numbers of transformer secondary and auxiliary turns, and  $V_F$  is the rectifier diode forward drop voltage at approximately 0.1A bias. The ACT357B includes internal feedback loop compensation to simplify application circuit design.

## Constant Current (CC) Mode

When the secondary output current reaches a level set by the internal current limiting circuit, the IC enters current limit condition and causes the secondary output voltage to drop. As the output voltage decreases, so does the fly back voltage in a proportional manner. Internal current shaping circuitry adjusts the switching frequency based on the flyback voltage so that the transferred power remains proportional to the output voltage, resulting in a constant secondary side output current profile. The energy transferred to the output during each switching cycle is  $\frac{1}{2}(L_P \times I_{LIM}^2) \times \eta$ , where  $L_P$  is the transformer primary inductance,  $I_{LIM}$  is the primary peak current, and  $\eta$  is the conversion efficiency. From this formula, the constant output current can be derived:

$$I_{OUTCC} = \frac{1}{2} L_P \times I_{LIM}^2 \left( \frac{\eta \times f_{SW}}{V_{OUTCV}} \right) \quad (2)$$

where  $f_{SW}$  is the nominal switching frequency and  $V_{OUTCV}$  is the nominal secondary output voltage. The constant current operation typically extends down to lower than 40% of output voltage regulation.

## Light Load Mode

When the secondary side output load current decreases to an internally set light load level, the IC's switching frequency is also reduced to save power. This enables the application to meet all current green energy standards. The actual minimum switching frequency is programmable with a small dummy load (while still meeting standby power).

## Short Circuit Mode

When the secondary side output is short circuited, the ACT357B enters hiccup mode operation. In this condition, the auxiliary supply voltage collapses and the VDD voltage drops below the  $V_{DDOFF}$  threshold. This turns off the IC and causes it to restart. This hiccup behavior continues until the short circuit is removed.

## Output Over Voltage Protection

The ACT357B includes output over-voltage protection circuitry, which shuts down the IC when the output voltage is 40% above the normal regulation voltage when no feedback signal is detected for 8 consecutive switching cycles. The IC enters hiccup mode when an output over voltage fault is detected.

## Loop Compensation

The ACT357B integrates loop compensation circuitry for simplified application design, optimized transient response, and minimal external components.

## Primary Inductance Compensation

The ACT357B includes built-in primary inductance compensation to maintain constant current regulation despite variations in transformer manufacturing.

## Peak Inductor Current Limit Compensation

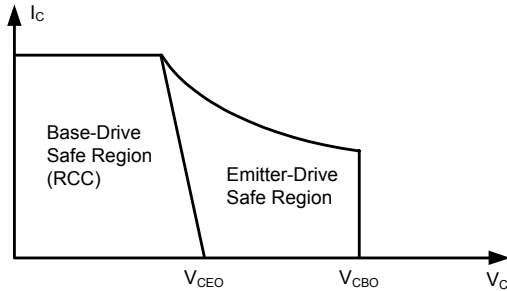
The ACT357B includes peak inductor current limit compensation to achieve constant input power over wide line and wide load range.

## Output Cord Resistance Compensation

The ACT357B provides automatic output cord resistance compensation during constant voltage regulation, monotonically adding an output voltage correction up to a typical correction of 3.2% at full power. This feature allows for better output voltage accuracy by compensating for the output voltage droop due to the output cord resistance.

## APPLICATIONS INFORMATION

**Figure 2:**  
**NPN Transistor Reverse Bias Safe Operation Area**



### External Power Transistor

The ACT357B allows a low-cost high voltage power NPN transistor such as '13003 or '13002 to be used safely in flyback configuration. The required collector voltage rating for  $V_{AC} = 265V$  with full output load is at least 600V to 700V. As seen from Figure 2, *NPN Reverse Bias Safe Operation Area*, the breakdown

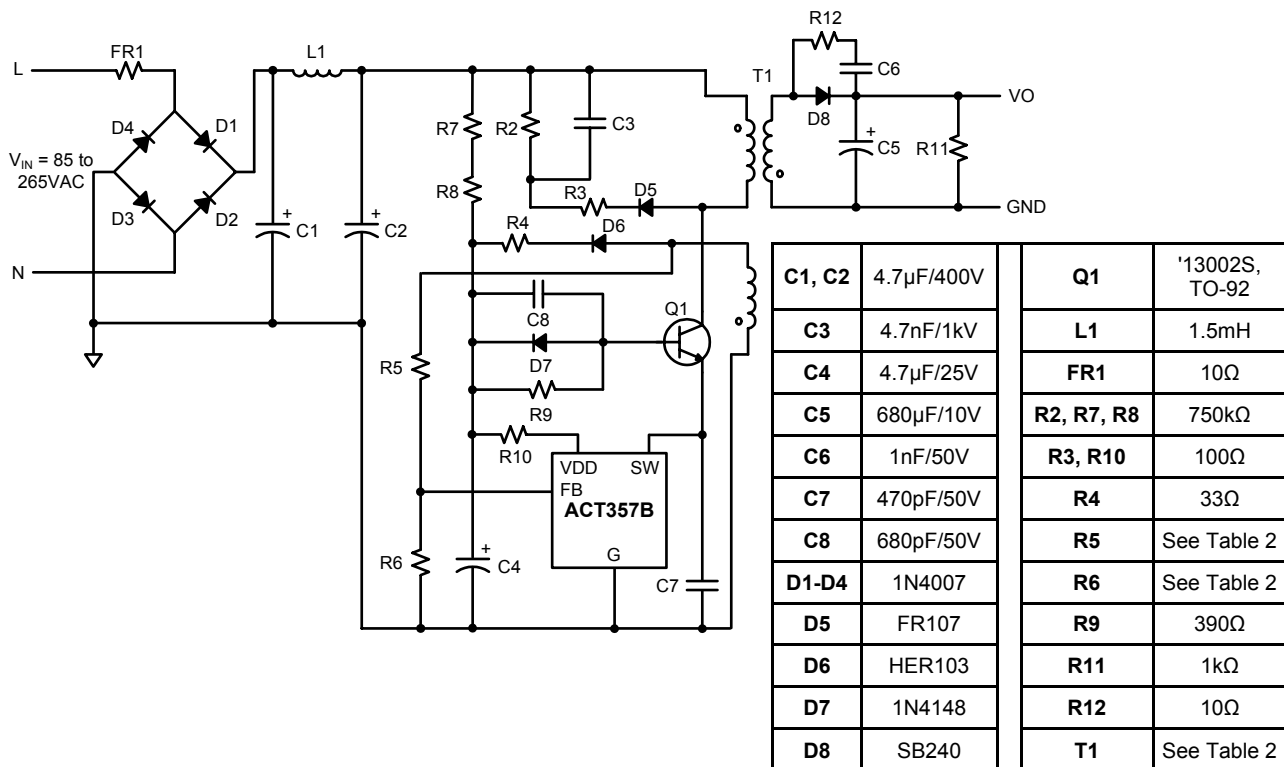
voltage of an NPN is significantly improved when it is driven at its emitter. Thus, the ACT357B+'13002 or '13003 combination meets the necessary breakdown safety requirement. Table 1 lists the breakdown voltage of some transistors appropriate for use with the ACT357B.

The power dissipated in the NPN transistor is equal to the collector current times the collector-emitter voltage. As a result, the transistor must always be in saturation when turned on to prevent excessive power dissipation. Select an NPN transistor with sufficiently high current gain ( $h_{FEMIN} > 8$ ) and a base drive resistor low enough to ensure that the transistor easily saturates.

**Table 1:**  
**Recommended NPN Transistors**

DEVICE	$V_{CBO}$	$V_{CE0}$	$I_c$	$h_{FEMIN}$	PACKAGE
MJE13002	600V	300V	1.5A	25	TO-126
MJE13003, KSE13003	700V	400V	1.5A	25	TO-126
STX13003	700V	400V	1A	25	TO-92

**Figure 3:**  
**Typical Application Circuit**



**Design Procedure**

Figure 3, *Typical Application Circuit*, shows a complete, optimized constant voltage/constant current charger application. The application design procedure for using the ACT357B is simple. Three components determine the output constant voltage and constant current settings: the transformer T1 and resistors R5 and R6. Refer to Table 2 for selection values for these three key components for different typical design cases. The *Typical Application Circuit* in Figure 3 lists component values of other devices in the a complete charger application.

**Design Notes**

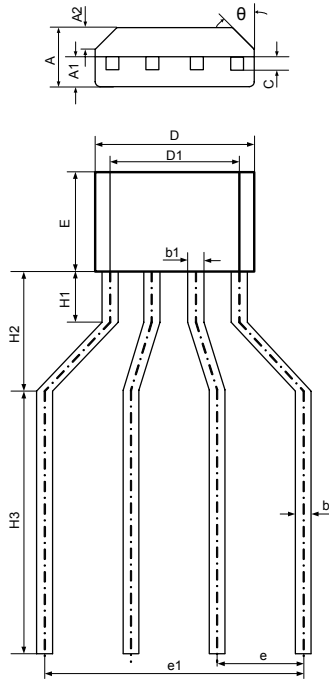
- 1) Design resistors R5 and R6 must meet the  $\pm 1\%$  tolerance to have good  $V_o$  regulation.
- 2) The value of the feedback resistor can be chosen slightly different from the table according to the actual system efficiencies in different systems.
- 3) C8 must be added to guarantee good CC accuracy.

**Table 2:**  
**Component Selection Table**

DESIGN CASE	OUTPUT		ActivePSR™ PART NUMBER	TRANSFORMER				RESISTOR NETWORK	
	V <sub>o</sub> (V)	I <sub>o</sub> (mA)		N <sub>P</sub>	N <sub>A</sub>	N <sub>S</sub>	L <sub>P</sub> ±7% (mH)	R5±1% (kΩ)	R6±1% (kΩ)
1	5.0	700	ACT357B	130	32	10	1.6	22.1	5.62
1	5.0	750	ACT357B	130	32	10	1.7	24.3	6.19
1	5.0	800	ACT357B	130	32	10	1.8	26.1	6.81
1	5.0	900	ACT357B	130	32	10	1.9	28.0	7.50

**PACKAGE OUTLINE**

**SIP-4 PACKAGE OUTLINE AND DIMENSIONS (AMMO TAPE PACKING)**

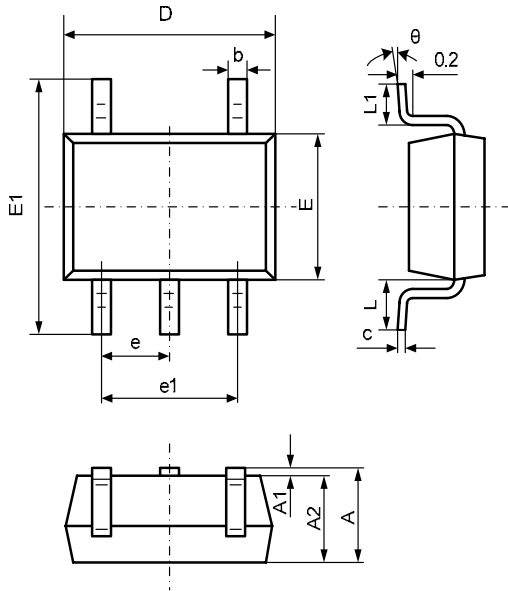


SYMBOL	DIMENSIONS IN MILLIMETERS		DIMENSIONS IN INCHES	
	MIN	MAX	MIN	MAX
A	1.400	1.800	0.055	0.071
A1	0.700	0.900	0.028	0.035
A2	0.500	0.700	0.020	0.028
b	0.360	0.500	0.014	0.020
b1	0.380	0.550	0.015	0.022
C	0.360	0.510	0.014	0.020
D	4.980	5.280	0.196	0.208
D1	3.780	4.080	0.149	0.161
E	3.450	3.750	0.136	0.148
e	2.200	2.800	0.086	0.110
e1	6.600	8.400	0.259	0.330
H1	1.350	1.650	0.053	0.065
H2	3.370	3.670	0.133	0.144
H3	10.83	11.13	0.426	0.438
θ	45°TYP		45°TYP	



**PACKAGE OUTLINE**

**SOT23-5 PACKAGE OUTLINE AND DIMENSIONS**



SYMBOL	DIMENSION IN MILLIMETERS		DIMENSION IN INCHES	
	MIN	MAX	MIN	MAX
A	1.050	1.250	0.041	0.049
A1	0.000	0.100	0.000	0.004
A2	1.050	1.150	0.041	0.045
b	0.300	0.500	0.012	0.020
c	0.100	0.200	0.004	0.008
D	2.820	3.020	0.111	0.119
E	1.500	1.700	0.059	0.067
E1	2.650	2.950	0.104	0.116
e	0.950 TYP		0.037 TYP	
e1	1.800	2.000	0.071	0.079
L	0.700 REF		0.028 REF	
L1	0.300	0.600	0.012	0.024
θ	0°	8°	0°	8°

Active-Semi, Inc. reserves the right to modify the circuitry or specifications without notice. Users should evaluate each product to make sure that it is suitable for their applications. Active-Semi products are not intended or authorized for use as critical components in life-support devices or systems. Active-Semi, Inc. does not assume any liability arising out of the use of any product or circuit described in this datasheet, nor does it convey any patent license.

Active-Semi and its logo are trademarks of Active-Semi, Inc. For more information on this and other products, contact [sales@active-semi.com](mailto:sales@active-semi.com) or visit <http://www.active-semi.com>. For other inquiries, please send to:

1270 Oakmead Parkway, Suite 310, Sunnyvale, California 94085-4044, USA