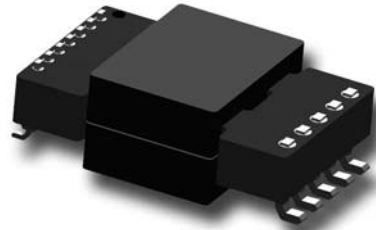


# DC-DC SERIES: P022

## Third generation of planar transformers

### Features

- High power planar transformer for DC/DC converter.
- According UL1950 / EN60950.
- UL 94V0 material.
- Storage temperature from -20°C to 130°C.
- Operating temperature -20°C to 85°C.
- Power up to 100W.



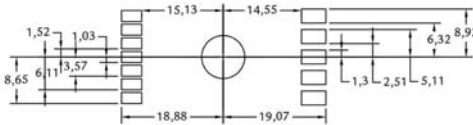
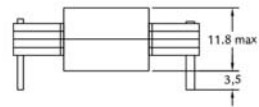
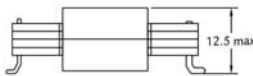
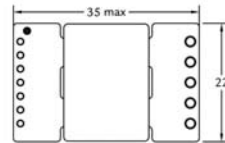
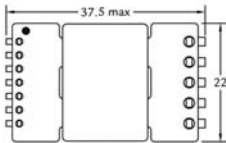
### Electrical specifications

Part Number	Input Voltage Vdc (V)	Output Voltage (V)	Output Current (A)	Power (W)	Frequency (kHz)	Duty cycle	Topology	Inductance ( $\mu\text{H}\pm 25\%$ )	Typ Leakage Inductance ( $\mu\text{H}$ )	Turns Ratio (Pri:Sec)	Max Total losses (W)
P022FW1CX1	36-72	3,3	30	100	200	0,47	Forward	350	0,5	9:2	2
P022FW1CX2	36-72	5	20	100	200	0,42	Forward	275	0,5	8:3	2
P022FW1CX3	36-72	12	8	100	200	0,47	Forward	275	0,5	8:6	2

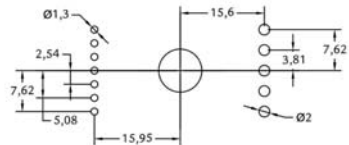
### Notes

Replace X by S for SMD application and P for PTH application.

### Dimensions

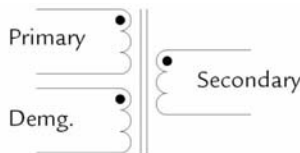


Recommended PCB layout



Recommended PCB layout

### Schematics



FORWARD