

millimetres

Dimension	≤10 A	15 A	20 A	Tolerance
A	6.35	6.35	9.08	±0.15
B	6.35	9.08	9.08	±0.15
C*	1.63	1.63	1.63	+0.15, -0.05
D	7.92	7.92	7.92	†
E	10.31	10.31	10.31	†
F	17.06	17.06	17.06	±0.4
G	19.94	19.94	19.94	±0.8
N	—	—	3.18	†
P	4.75	—	—	±0.05
R	0.35	0.35	0.35	±0.05
S	0.90	0.90	0.90	±0.10
T	≥0.60	≥0.60	≥0.60	—
V	6	6/11‡	11	†

millimetres

Dimension	10 A	Tolerance
H	6.35	±0.15
L*	1.63	±0.15
J	6.35	†
K	17.06	±0.4
M	12.70	†

*Dimensions C and L apply to all pins.

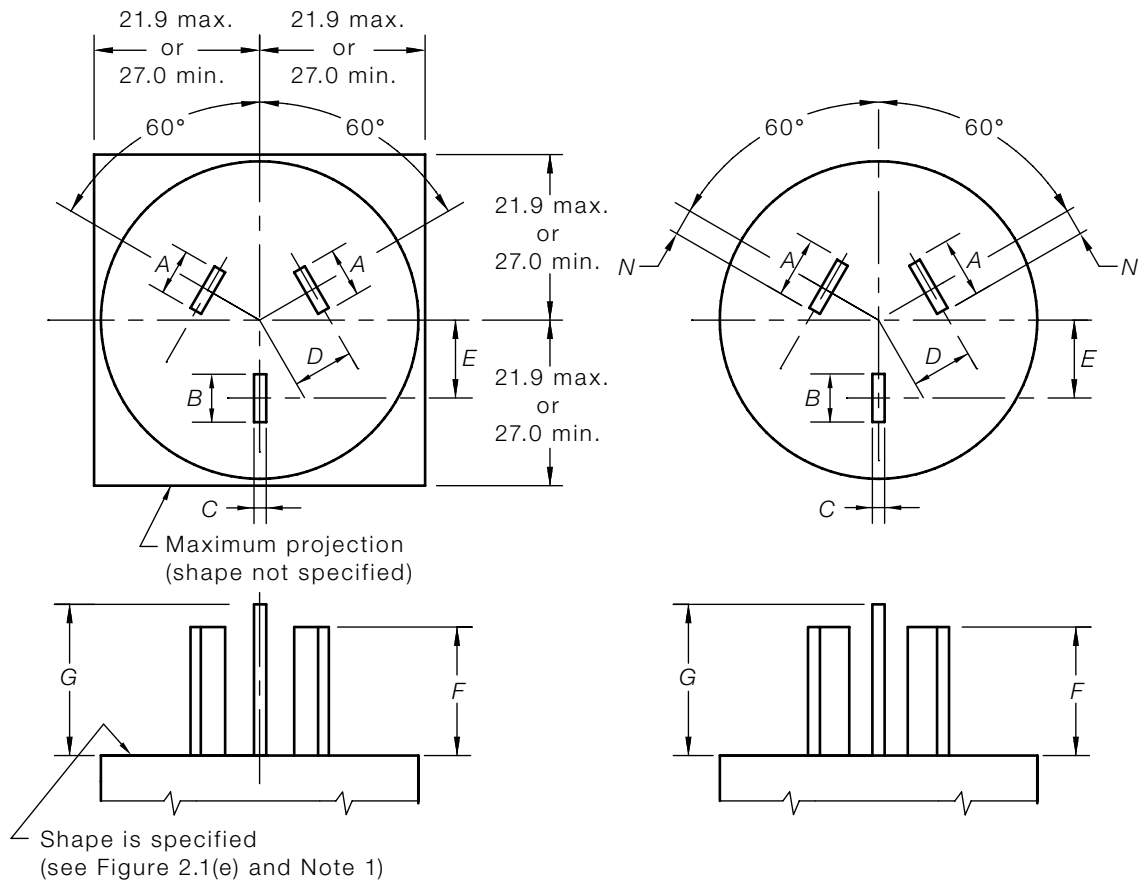
†Dimensions without tolerances are nominal. Samples are to be checked with the gauge specified in Appendix A, Appendix B or Appendix F, as appropriate.

‡All live pins rated 15 A = 6 mm, Earth pins of 15 A plug = 11 mm.

FIGURE 2.1 (in part) DIMENSIONS OF PLUGS

A1

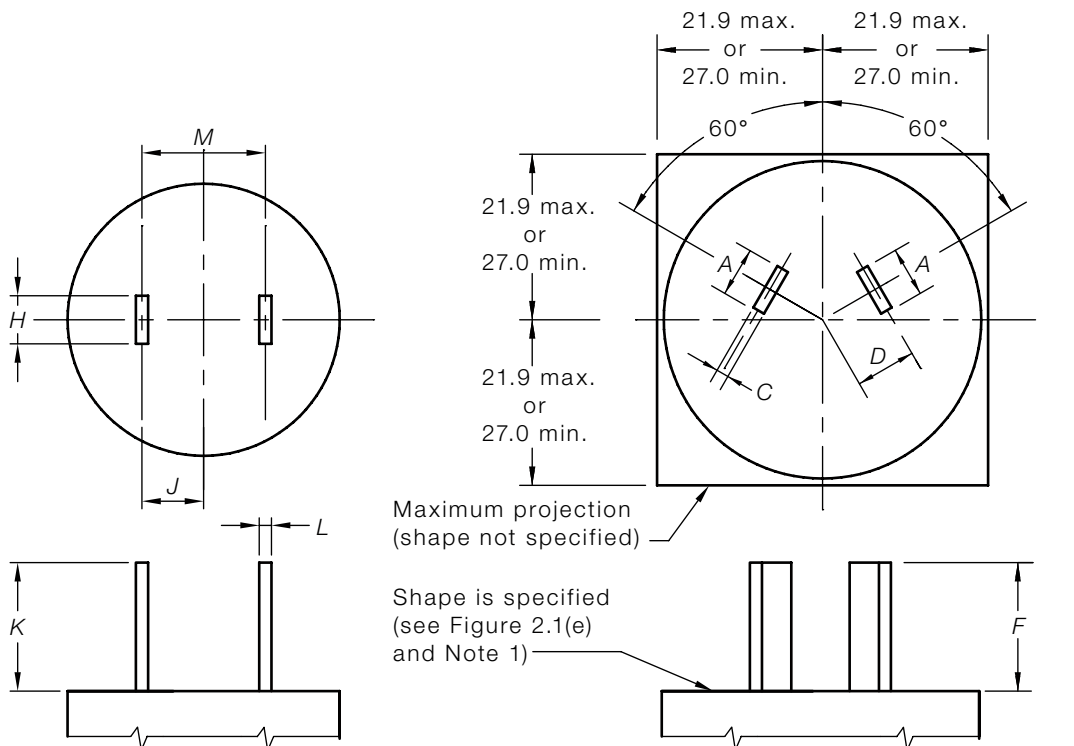
A1



(a1) 10 A or 15 A, 250 V max.

(a2) 20 A, 250 V max.

(a) Three-pin plugs (10 A, 15 A or 20 A, 250 max.)

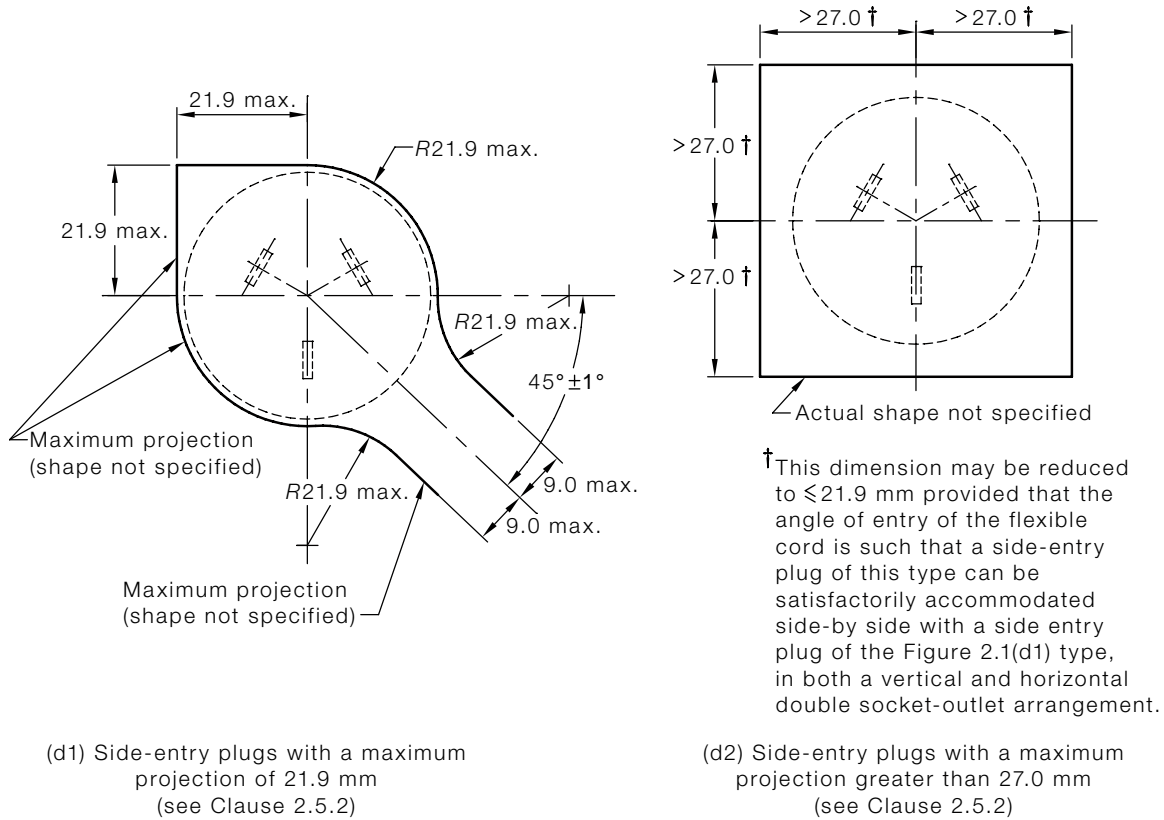


(b) Two-pin plugs (10 A, 125 V max.)

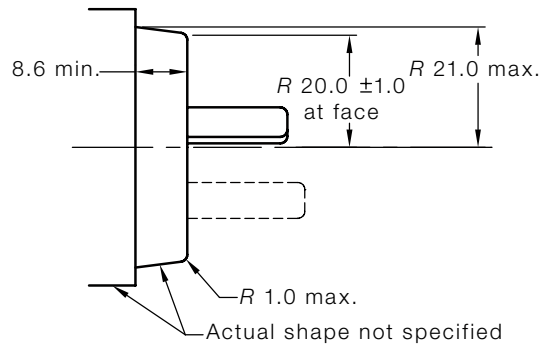
(c) Two-pin plugs (up to 10 A, 250 V max.)

DIMENSIONS IN MILLIMETRES

FIGURE 2.1 (in part) DIMENSIONS OF PLUGS



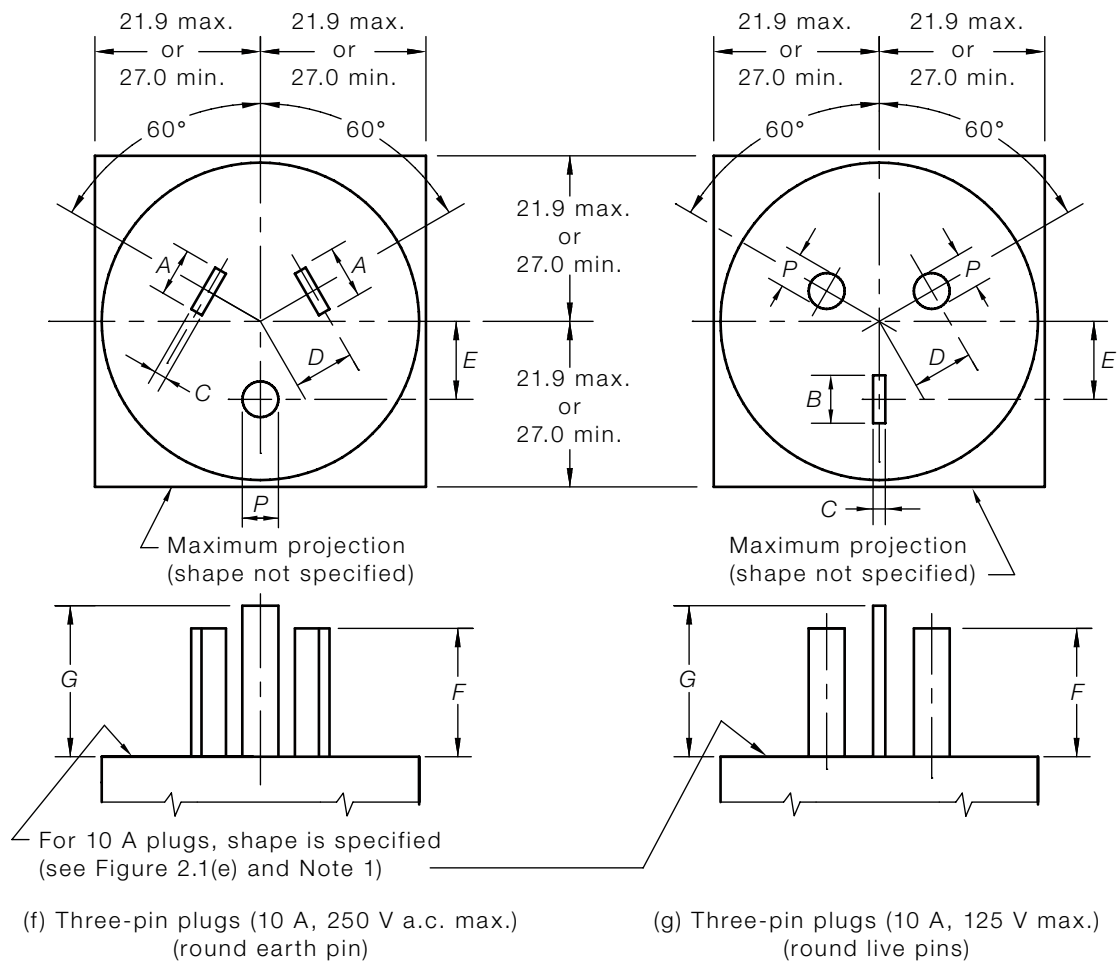
(d) Configuration of side-entry plugs (up to 15 A, 250 V max.)



(e) Shape of plugs having rating to 20 A, 250 V max. and of the (a1), (c), (d), (f) or (g) type

DIMENSIONS IN MILLIMETRES

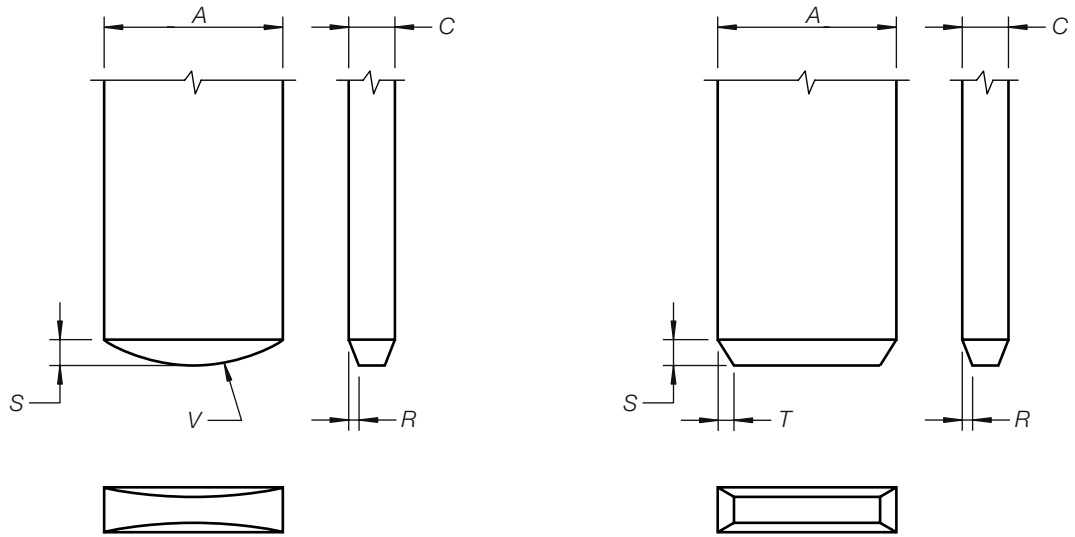
FIGURE 2.1 (in part) DIMENSIONS OF PLUGS



DIMENSIONS IN MILLIMETRES

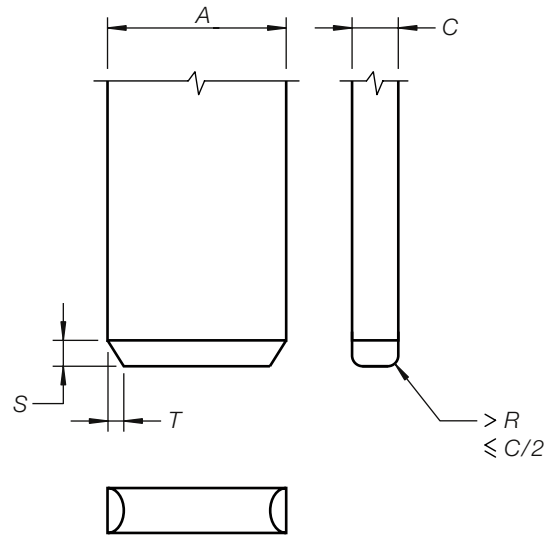
FIGURE 2.1 (in part) DIMENSIONS OF PLUGS

A1



(h) Flat pin with radius on the end with side bevels

(i) Flat pin square on the end with corner bevels and side bevels



(j) The flat pin square on the end with corner bevels and radius on the sides

FIGURE 2.1 (IN PART) DIMENSIONS OF PLUGS