

# iWatt系列驱动电源方案\_\_Non-dimmable



## iWatt Digital Power LED Lighting Driver Selection Guide

Non-Dimmable						
Applications	3W		Up to 5W	Up to 30W	Up to 30W	Up to 30W
	Low-power	Low-cost Small-size	High-power density Valley fill PFC	High- power density	High-power density Valley fill PFC	High- power density High PF
	E14, GU10		GU10 Bulb PAR20	GU10 Bulb PAR20-PAR38	GU10 Bulb PAR20PAR38	GU10 Bulb PAR20PAR38
<b>Part Numbers</b>	<b>iW1696/1678</b>	<b>iW1810</b>	<b>iW1678</b>	<b>iW3620</b>	<b>iW3620</b>	<b>iW3620</b>
External Drive	BJT STBV42/3DD3020	Integrated 800V BJT	BJT STBV42/3DD3020	Mosfet 2A	Mosfet 4A/5A	Mosfet 4A/5A
Switching Frequency	45kHz/64KHz	64KHz	64kHz	up to 130kHz	up to 130kHz	up to 130kHz
Package	SOT23-5	SOIC8	SOT23-5	SOIC8	SOIC8	SOIC8
Efficiency	>78% @3w	>78% @3w	>79% @5w	>85% @10w	>85% @10w	>85% @10w
CC tolerance	5%	5%	5%	5%	5%	7%
Isolated/ Non-isolated	Both	Both	Both	Both	Both	Both
Primary-feedback,	Yes	Yes	Yes	Yes	Yes	Yes
Power Factor			>0.8 Passive		>0.8 Passive	>0.8--0.9,SEPIC
Proposed transformer	EE10/ EPC13/EE13	EE10/ EE13/EPC13	EE13/ EPC13/EE16/	EE16 RM6/RM8/PQ2016	EE16 RM6/RM8/PQ2016	RM6/RM8/PQ2016

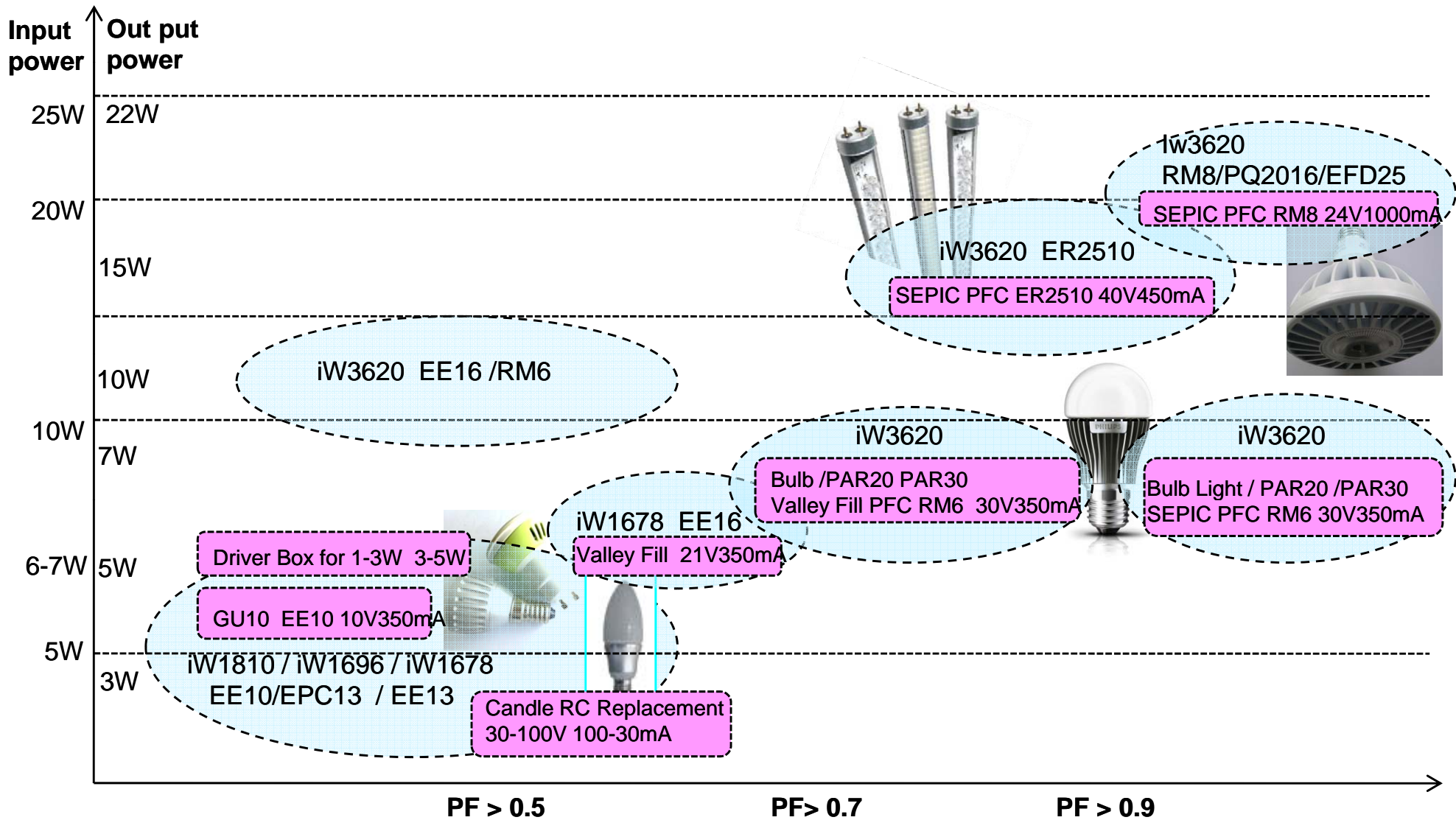
# iWatt系列驱动电源方案\_\_\_\_Dimmable



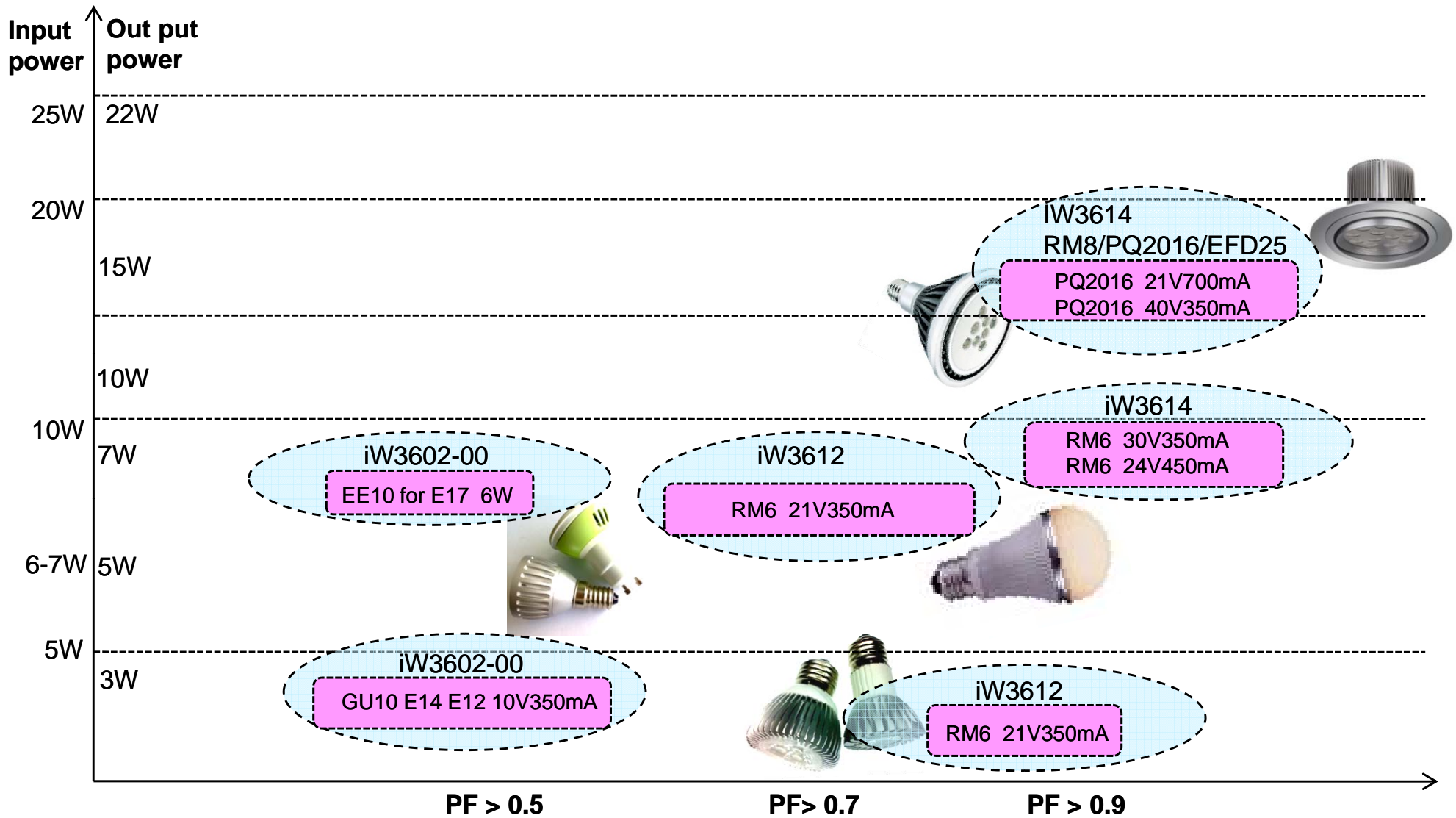
## iWatt Digital Power LED Lighting Driver Selection Guide

Applications	Dimmable					
	3W-7W		Up to 30W	Up to 30W	Up to 30W	Up to 30W
	Low power		High-Power density	High-Power density	High-Power density	High-Power density
	GU10 / Candle		Bulb PAR	Bulb PAR T8	Bulb PAR T8	Bulb PAR T8
Part Numbers	iW3602-00	iW3602-01	Iw3610-00/01	iW3612-00	iW3612-01	iW3614
Optimized for	100v/120V	120V/230V	100V/120V/230V	100-120V	230V	100V/120V/230V
Chopping PFC	No Chopping	Chopping PFC	Chopping PFC	Chopping PFC	Chopping PFC	Chopping PFC
Fly back MOSFET	MOSFET 1A/ 2A	MOSFET 1A / 2A	MOSFET 2A-4A	MOSFET 2A-4A	MOSFET 2A-4A	MOSFET 2A-4A
Chopping MOSFET	MOSFET 2A	MOSFET 2A	MOSFET 2A	MOSFET 2A	MOSFET 2A	MOSFET 2A
Switching Frequency	Up to 200KHz	Up to 200KHz	Up to 200kHz	Up to 200kHz	Up to 200kHz	Up to 200kHz
IC Package	SOIC8	SOIC8	SOIC8	SOIC8	SOIC8	SOIC8
Efficiency	>75% @3W Non-isolated	>75% @3W Isolated	>80% @3W Isolated	>82% @10W Isolated	>82% @10W Isolated	>82% @15W Isolated
CC tolerance	5%	5%	5%	5%	5%	5%
Power Factor	0.5-0.6	>0.7	>0.7	>0.7	>0.7	>0.9
Isolated/ Non-isolated	Both	Both	Both	Both	Both	Both
Proposed transformer	EE10/ EPC13	EE10/ EE13/EE16/RM6	RM6/ EE16/ RM6/	RM6/RM8/PQ2016	RM6/RM8/PQ2016	RM6/RM8/PQ2016

# Non-dimmable



# Dimmable



# 全系列的方案配合市场的需求

**iWatt**

**PHILIPS**

**OSRAM**

**TOSHIBA**

**IKEA®**

**NEC**

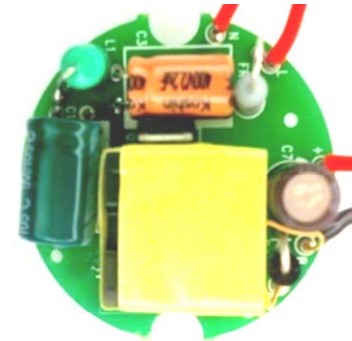
**SHARP**

**1W-30W**

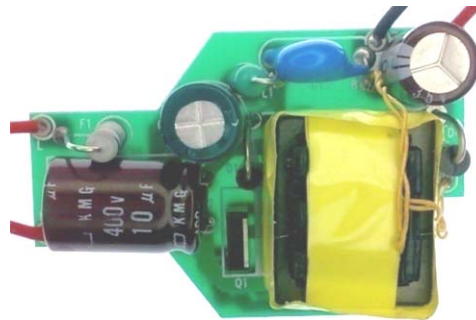
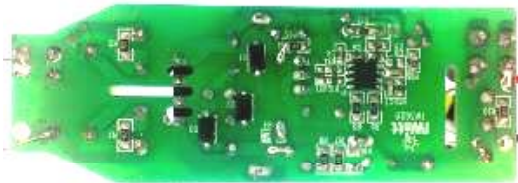
**Dimmable and Non-dimmable**

**Isolated and Non-isolated**

**General PF and High PF**



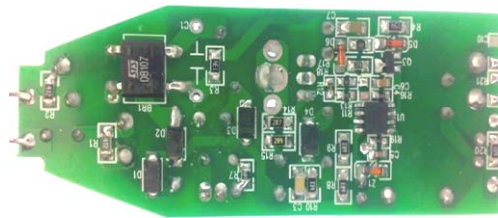
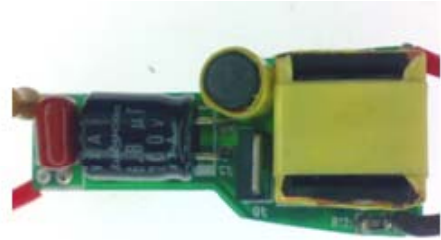
**Down Light**



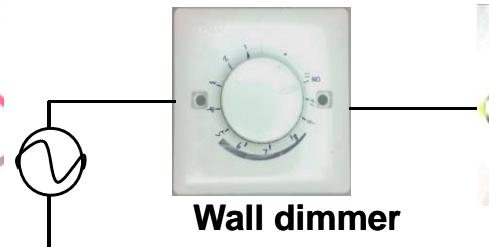
**GU10**



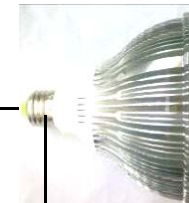
**GU10**



**E14**



**Wall dimmer**



**LED Tube lighting**

