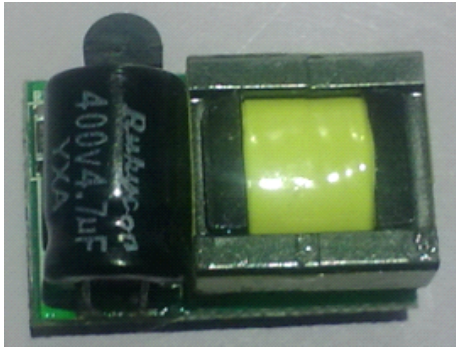


DX3W-10.5V-300mA

3*1W 射灯LED驱动 3*1W Spotlight LED Driver

DX-TEK 灯芯科技



功能简介:

- 高精度单路恒流输出
- 采用高转换效率开关电源模式
- +/-5% 批量恒流精度
- 应用于室内照明灯具
- 自恢复短路保护
- LED开路自恢复保护
- 输出过载自恢复保护

Features and Applications:

- One Single Constant Current Output
- Highly Efficient Switching-Mode Technology
- +/-5% Constant Current Precision
- Built for Indoor Dry Applications
- Short Circuit Protection with Auto-Recovery
- Open Circuit Protection with Auto-Recovery
- Over Load Protection with Auto-Recovery

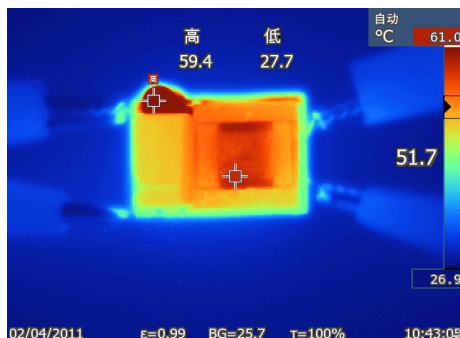
尺寸: 长*宽*高 23*16*13mm

Size: L*W*H 23*16*13mm

以下数据如未作特殊说明, 均为25度环温条件下测试所得

All specifications are typical at nominal input, full load, at 25 oC unless otherwise stated.

电气性能 Electrical Specs		通用 General	
输入		工作环境 Environmental	
INPUT		工作温度	-5°C to +50°C Full Load
最大输入电压范围	90 - 264Vac	Operating Temp	
Input Voltage Range		降额工作温度	+70°C Half Output Voltage
标称输入电压范围	110 - 230Vac	Derating Temp	
Rating Input Voltage Range		存储温度	-40°C to +85°C
频率	47 - 63Hz	Storage Temp	
Frequency		工作湿度	5% to 95% 非水凝结
输入电流	Max. 0.1A @ 115Vac / 60Hz, Full Load	Relative Humidity	
Input Current		风冷	自对流
输入浪涌电流	5A @ 264Vac input/ 60Hz, Full Load	Cooling	
Inrush Current			
转换效率	≥75% @ 230V input, Full Load		
Efficiency			
输出			
OUTPUT			
输出恒压范围	7~10.5V		
Output Voltage Range			
输出恒流范围	295-325mA (310mA +/-5%)		
Constant Current Range			
短路保护	关机, 故障解除后可自恢复		
Short Circuit Protection			
输出纹波	<10% 输出		
Ripple and Noise			
开机时间	< 2 Sec.		
Start-up Time			



器件温升 Temp Rise: <35C

主开关管耐压 Vcbo: 513Vmax at 264Vac