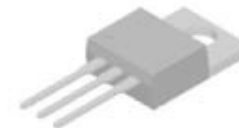
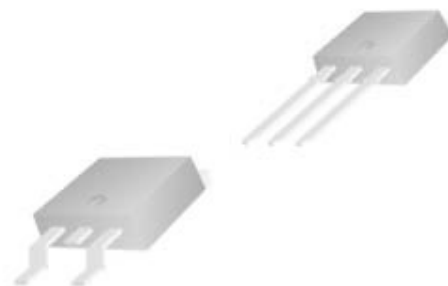
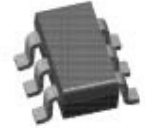
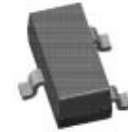


A N A L O G P O W E R

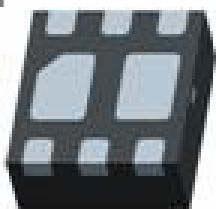
Analog Power Inc.





ANALOG POWER

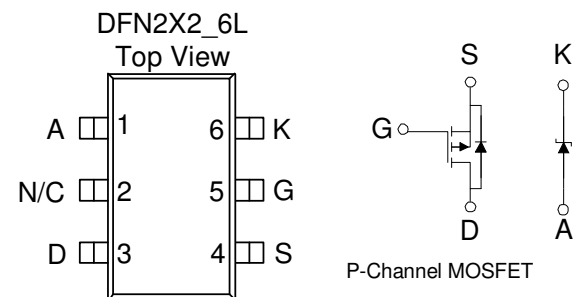
Products Overview



DFN2X2



ANALOG POWER

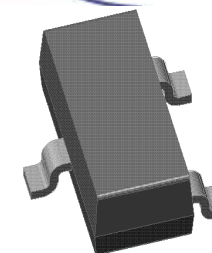


| Part Number | Configuration | V _{DS} (V) | V _{GS} (V) | r _{DS(ON)} Max. (Ω) @ V _{GS} = | | | | | I _D (A) Max. | Q _g (nC) Typ. | P _D (W) Max. | Package | Sample Schedule | Production Schedule |
|-------------|---------------------|---------------------|---------------------|--|--------|------|--------|------|-------------------------|--------------------------|-------------------------|------------|-----------------|---------------------|
| | | | | 10V | 4.5V | 3.5V | 2.5V | 1.8V | | | | | | |
| AMA520C | Complementary N | 20 | 12 | | 0.0580 | | 0.0820 | | 3.70 | 7.50 | 5.00 | DFN2X2-6PP | Now | Now |
| | Complementary P | -20 | 12 | | 0.1120 | | 0.1720 | | 2.70 | 3.80 | | | | |
| AMA829P | Single P + Schottky | -20 | 8 | | 0.0900 | | 0.1200 | | 4.50 | 6.00 | 5.00 | DFN2X2-6PP | Now | Now |
| AMA920N | Dual N | 20 | 8 | | 0.0580 | | 0.0820 | | 4.50 | 6.00 | 5.00 | DFN2X2-6PP | Now | Now |
| AMA921P | Dual P | -20 | 8 | | 0.0790 | | 0.1100 | | 4.50 | 12.20 | 5.00 | DFN2X2-6PP | Now | Now |
| AMA922N | Dual N | 20 | 8 | | 0.0230 | | 0.0330 | | 14.00 | 6.00 | 5.00 | DFN2X2-6PP | Now | Now |
| AMA930N | Dual N | 30 | 20 | 0.0580 | 0.0820 | | | | 4.50 | 6.00 | 5.00 | DFN2X2-6PP | Now | Now |
| AMA931PE | Dual P | -30 | 8 | | 0.2100 | | 0.2900 | | 4.00 | | 5.00 | DFN2X2-6PP | Now | Now |

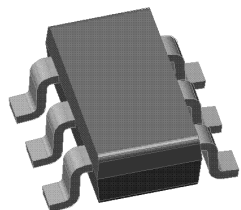
SC70-3



ANALOG POWER



| Part Number | Configuration | V _{DS} (V) | V _{GS} (V) | r _{DS(ON)} Max. (Ω) @ V _{GS} = | | | | | I _D (A) Max. | Q _g (nC) Typ. | P _D (W) Max. | Package | Sample Schedule | Production Schedule |
|-------------|---------------|---------------------|---------------------|--|--------|------|--------|------|-------------------------|--------------------------|-------------------------|---------|-----------------|---------------------|
| | | | | 10V | 4.5V | 3.5V | 2.5V | 1.8V | | | | | | |
| AM1320N | Single N | 20 | 8 | | 0.0580 | | 0.0820 | | 2.00 | 7.50 | 0.34 | SC70-3 | Now | Now |
| AM1321P | Single P | -20 | 8 | | 0.0790 | | 0.1100 | | 1.70 | 7.20 | 0.34 | SC70-3 | Now | Now |
| AM1330N | Single N | 30 | 20 | 0.0580 | 0.0820 | | | | 2.00 | 7.50 | 0.34 | SC70-3 | Now | Now |
| AM1331P | Single P | -30 | 20 | 0.1120 | 0.1720 | | | | 1.50 | 7.20 | 0.34 | SC70-3 | Now | Now |
| AM1340N | Single N | 40 | 20 | 0.0860 | 0.1280 | | | | 1.70 | 7.50 | 0.34 | SC70-3 | Now | Now |
| AM1360NE | Single N | 60 | 20 | 3.0000 | 3.3000 | | | | 0.30 | 4.00 | 0.34 | SC70-3 | Now | Now |
| AM1370N | Single N | 200 | 20 | 1.9000 | 2.0000 | | | | 0.35 | | 0.34 | SC70-3 | Now | Now |

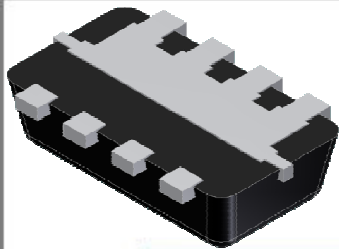


SC70-6

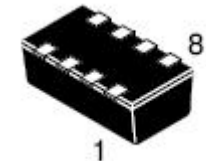


ANALOG POWER

| Part Number | Configuration | V _{DS} (V) | V _{GS} (V) | r _{DS(ON)} Max. (Ω) @ V _{GS} = | | | | | I _D (A) Max. | Q _g (nC) Typ. | P _D (W) Max. | Package | Sample Schedule | Production Schedule |
|-------------|-----------------|---------------------|---------------------|--|--------|------|--------|------|-------------------------|--------------------------|-------------------------|---------|-----------------|---------------------|
| | | | | 10V | 4.5V | 3.5V | 2.5V | 1.8V | | | | | | |
| AM1400NE | Single N | 150 | 20 | 1.2000 | 1.3000 | | | | 0.94 | 7.50 | 1.56 | SC70-6 | Now | Now |
| AM1420N | Single N | 20 | 8 | | 0.0580 | | 0.0820 | | 4.30 | 2.50 | 1.56 | SC70-6 | Now | Now |
| AM1421P | Single P | -20 | 8 | | 0.0790 | | 0.1100 | | 3.70 | 7.20 | 1.56 | SC70-6 | Now | Now |
| AM1430N | Single N | 30 | 20 | 0.0580 | 0.0820 | | | | 4.30 | 7.50 | 1.56 | SC70-6 | Now | Now |
| AM1431P | Single P | -30 | 20 | 0.1120 | 0.1720 | | | | 3.10 | 7.20 | 1.56 | SC70-6 | Now | Now |
| AM1432NE | Single N | 30 | 20 | 0.0330 | 0.0450 | | | | 5.70 | 7.50 | 1.56 | SC70-6 | Now | Now |
| AM1431P | Single P | -30 | 20 | 0.0640 | 0.0960 | | | | 4.10 | 7.50 | 1.56 | SC70-6 | Now | Now |
| AM1433PE | Single P | -30 | 20 | 0.0650 | 0.0960 | | | | 4.10 | 4.00 | 1.56 | SC70-6 | Now | Now |
| AM1434N | Single N | 30 | 8 | | 0.0350 | | 0.0430 | | 5.50 | 6.00 | 1.56 | SC70-6 | Now | Now |
| AM1440N | Single N | 40 | 20 | 0.0860 | 0.1280 | | | | 3.50 | 7.50 | 1.56 | SC70-6 | Now | Now |
| AM1523CE | Complementary N | 20 | 8 | | 0.0900 | | 0.1200 | | 1.50 | 1.64 | 0.30 | SC70-6 | Now | Now |
| | Complementary P | -20 | 8 | | 0.2000 | | 0.3700 | | 1.00 | 1.10 | | | | |
| AM1535CE | Complementary N | 30 | 8 | | 0.0900 | | 0.1800 | | 1.50 | | 0.30 | SC70-6 | Now | Now |
| | Complementary P | -30 | 8 | | 0.2100 | | 0.2900 | | 1.00 | | | | | |
| AM1537CE | Complementary N | 30 | 20 | 0.0900 | 0.1300 | | | | 1.50 | 1.50 | 0.30 | SC70-6 | Now | Now |
| | Complementary P | -30 | 20 | 0.1900 | 0.2900 | | | | 1.10 | | | | | |
| AM1541CE | Complementary N | 40 | 20 | 0.1400 | 0.1900 | | | | 1.20 | | 0.30 | SC70-6 | Now | Now |
| | Complementary P | -40 | 20 | 0.3000 | 0.3900 | | | | 0.90 | | | | | |
| AM1561CE | Complementary N | 60 | 20 | 0.3000 | 0.3700 | | | | 0.90 | 1.70 | 0.30 | SC70-6 | Now | Now |
| | Complementary P | -60 | 20 | | | | | | | | | | | |
| AM1580CE | Complementary N | 80 | 20 | | | | | | | | 0.30 | SC70-6 | Jan-13 | Now |
| | Complementary P | -80 | 20 | | | | | | | | | | | |
| AM1922NE | Dual N | 20 | 8 | | 0.0880 | | 0.1200 | | 1.60 | 1.00 | 0.30 | SC70-6 | Now | Now |
| AM1925PE | Dual P | -20 | 8 | | 0.1600 | | 0.2100 | | 1.00 | 3.00 | 0.30 | SC70-6 | Now | Now |
| AM1936NE | Dual N | 30 | 20 | 0.0900 | 0.1300 | | | | 1.50 | 0.40 | 0.30 | SC70-6 | Now | Now |
| AM1960NE | Dual N | 60 | 20 | 2.0000 | 3.0000 | | | | 0.32 | 0.40 | 0.30 | SC70-6 | Now | Now |
| AM1963PE | Dual P | -60 | 8 | | | | | | | 1.00 | 0.30 | SC70-6 | Jan-13 | Now |



DFN2X3

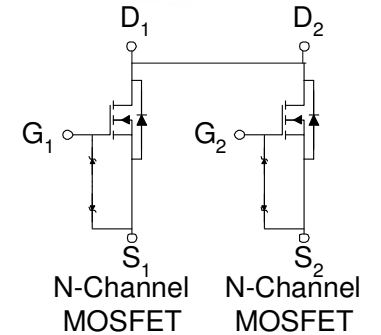
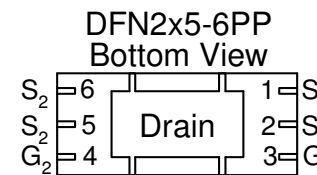


| Part Number | Configuration | V _{DS} (V) | V _{GS} (V) | r _{DS(ON)} Max. (Ω) @ V _{GS} = | | | | | I _D (A) Max. | Q _g (nC) Typ. | P _D (W) Max. | Package | Sample Schedule | Production Schedule |
|-------------|---------------------|---------------------|---------------------|--|--------|--------|--------|------|-------------------------|--------------------------|-------------------------|------------|-----------------|---------------------|
| | | | | 10V | 4.5V | 3.5V | 2.5V | 1.8V | | | | | | |
| AM5350N | Single N | 150 | 20 | 0.7000 | 1.2000 | | | | 1.30 | 2.50 | 3.50 | DFN2X3-8PP | Now | Now |
| AM5400N | Single N | 100 | 20 | 0.2800 | 0.3550 | | | | 11.00 | 4.10 | 3.50 | DFN2X3-8PP | Now | Now |
| AM5423P | Single P | -20 | 8 | | 0.0240 | 0.0310 | 0.0410 | | 8.40 | 19.00 | 3.50 | DFN2X3-8PP | Now | Now |
| AM5430N | Single N | 30 | 20 | 0.0220 | 0.0300 | | | | 10.00 | 3.10 | 3.50 | DFN2X3-8PP | Now | Now |
| AM5460N | Single N | 60 | 20 | 0.0820 | 0.1150 | | | | 5.00 | 4.10 | 3.50 | DFN2X3-8PP | Now | Now |
| AM5480N | Single N | 80 | 20 | 0.0820 | 0.1150 | | | | 5.00 | 4.10 | 3.50 | DFN2X3-8PP | Now | Now |
| AM5521C | Complementary N | 20 | 12 | | 0.0580 | | 0.0770 | | 5.00 | 2.00 | 2.10 | DFN2X3-8 | Now | Now |
| | Complementary P | -20 | 12 | | 0.0640 | | 0.0850 | | 4.70 | 7.00 | | | | |
| AM5829P | Single P + Schottky | -20 | 8 | | 0.1100 | | 0.1600 | | 3.60 | 6.00 | 2.10 | DFN2X3-8 | Now | Now |
| AM5920N | Dual N | 20 | 8 | | 0.0580 | | 0.0820 | | 5.00 | 7.50 | 2.10 | DFN2X3-8 | Now | Now |
| AM5922N | Dual N | 20 | 8 | | 0.0230 | | 0.0330 | | 7.90 | 6.00 | 2.10 | DFN2X3-8 | Now | Now |
| AM5931P | Dual P | -30 | 20 | 0.0840 | 0.1300 | | | | 4.10 | 6.00 | 2.10 | DFN2X3-8 | Now | Now |
| AM5932N | Dual N | 30 | 20 | 0.0350 | 0.0450 | | | | 6.40 | 1.00 | 2.10 | DFN2X3-8 | Now | Now |

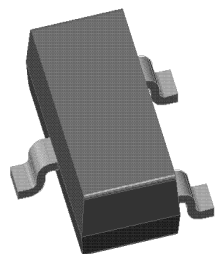
DFN2X5-6PP



ANALOG POWER



| Part Number | Configuration | V _{DS} (V) | V _{GS} (V) | r _{DS(ON)} Max. (Ω) @ V _{GS} = | | | | | I _D (A) Max. | Q _g (nC) Typ. | P _D (W) Max. | Package | Sample Schedule | Production Schedule |
|-------------|---------------|---------------------|---------------------|--|--------|------|--------|------|----------------------------|-----------------------------|----------------------------|------------|-----------------|---------------------|
| | | | | 10V | 4.5V | 3.5V | 2.5V | 1.8V | | | | | | |
| AMF920NE | Dual N | 20 | 12 | | 0.0220 | | 0.0280 | | 11.00 | 9.20 | 3.50 | DFN2X5-6PP | Now | Now |

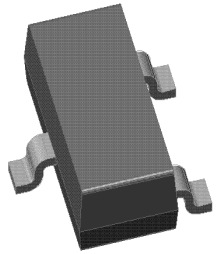


SOT-23



ANALOG POWER

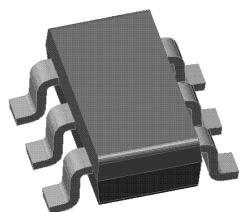
| Part Number | Configuration | V _{DS} (V) | V _{GS} (V) | r _{DS(ON)} Max. (Ω) @ V _{GS} = | | | | | I _D (A) Max. | Q _g (nC) Typ. | P _D (W) Max. | Package | Sample Schedule | Production Schedule |
|-------------|---------------|---------------------|---------------------|--|---------|------|--------|--------|-------------------------|--------------------------|-------------------------|---------|-----------------|---------------------|
| | | | | 10V | 4.5V | 3.5V | 2.5V | 1.8V | | | | | | |
| AM2300N | Single N | 20 | 8 | | 0.0350 | | 0.0500 | | 4.30 | 7.00 | 1.25 | SOT-23 | Now | Now |
| AM2301P | Single P | -20 | 8 | | 0.1300 | | 0.1900 | | 2.60 | 12.20 | 1.25 | SOT-23 | Now | Now |
| AM2301PE | Single P | -20 | 8 | | 0.1300 | | 0.1900 | | 2.60 | 6.00 | 1.25 | SOT-23 | Now | Now |
| AM2302N | Single N | 20 | 8 | | 0.0760 | | 0.1030 | | 3.40 | 3.50 | 1.25 | SOT-23 | Now | Now |
| AM2302NE | Single N | 20 | 8 | | 0.0760 | | 0.1030 | | 3.00 | 3.50 | 1.25 | SOT-23 | Now | Now |
| AM2303P | Single P | -20 | 8 | | 0.1000 | | 0.1600 | 0.2900 | 2.90 | 6.00 | 1.25 | SOT-23 | Now | Now |
| AM2305P | Single P | -20 | 8 | | 0.0430 | | 0.0540 | 0.1200 | 4.50 | 12.00 | 1.25 | SOT-23 | Now | Now |
| AM2305PE | Single P | -20 | 8 | | 0.0430 | | 0.0540 | 0.1200 | 4.50 | 12.00 | 1.25 | SOT-23 | Now | Now |
| AM2306N | Single N | 30 | 20 | 0.0580 | 0.0820 | | | | 3.50 | 2.20 | 1.25 | SOT-23 | Now | Now |
| AM2306NE | Single N | 30 | 20 | 0.0580 | 0.0820 | | | | 3.50 | 2.20 | 1.25 | SOT-23 | Now | Now |
| AM2307PE | Single P | -20 | 8 | | 0.0310 | | 0.0440 | 0.0560 | 5.20 | 18.00 | 1.25 | SOT-23 | Now | Now |
| AM2308N | Single N | 30 | 12 | | 0.0600 | | 0.0820 | | 3.50 | 6.30 | 1.25 | SOT-23 | Now | Now |
| AM2308NE | Single N | 30 | 12 | | 0.0600 | | 0.0820 | | 3.50 | 6.30 | 1.25 | SOT-23 | Now | Now |
| AM2310N | Single N | 30 | 8 | | 0.0650 | | 0.0820 | | 2.20 | 7.00 | 1.25 | SOT-23 | Now | Now |
| AM2313P | Single P | -60 | 20 | 10.0000 | 20.0000 | | | | 1.80 | 0.36 | 1.25 | SOT-23 | Now | Now |
| AM2314N | Single N | 20 | 12 | | 0.0320 | | 0.0440 | | 5.30 | 13.40 | 1.25 | SOT-23 | Now | Now |
| AM2314NE | Single N | 20 | 12 | | 0.0320 | | 0.0440 | | 4.60 | 13.40 | 1.25 | SOT-23 | Now | Now |
| AM2317P | Single P | -30 | 20 | 0.3000 | 0.5000 | | | | 0.90 | 2.00 | 1.25 | SOT-23 | Now | Now |
| AM2318N | Single N | 30 | 20 | 0.1600 | 0.2500 | | | | 1.20 | 1.90 | 1.25 | SOT-23 | Now | Now |
| AM2319P | Single P | -30 | 20 | 0.2000 | 0.3000 | | | | 1.10 | 3.40 | 1.25 | SOT-23 | Now | Now |
| AM2320NE | Single N | 20 | 8 | | 0.0180 | | 0.0210 | | 7.00 | 13.40 | 1.25 | SOT-23 | Now | Now |
| AM2321P | Single P | -20 | 8 | | 0.0790 | | 0.1100 | | 4.10 | 7.20 | 1.25 | SOT-23 | Now | Now |
| AM2321PE | Single P | -20 | 8 | | 0.0790 | | 0.1100 | | 4.10 | 7.20 | 1.25 | SOT-23 | Now | Now |
| AM2322N | Single N | 30 | 20 | 0.0850 | 0.1250 | | | | 2.50 | 3.50 | 1.25 | SOT-23 | Now | Now |
| AM2323P | Single P | -20 | 12 | | 0.1000 | | 0.1600 | 0.2900 | 2.90 | 6.00 | 1.25 | SOT-23 | Now | Now |
| AM2324N | Single N | 20 | 8 | | 0.0470 | | 0.0550 | | 3.00 | 7.50 | 1.25 | SOT-23 | Now | Now |
| AM2325P | Single P | -20 | 12 | | 0.0550 | | 0.0890 | 0.2000 | 3.60 | 16.70 | 1.25 | SOT-23 | Now | Now |
| AM2326N | Single N | 20 | 8 | | 0.0700 | | 0.0800 | 0.1200 | 2.20 | 4.50 | 1.25 | SOT-23 | Now | Now |
| AM2327P | Single P | -20 | 8 | | 0.0520 | | 0.0720 | 0.1200 | 3.60 | 12.00 | 1.25 | SOT-23 | Now | Now |
| AM2328N | Single N | 20 | 8 | | 0.0220 | | 0.0260 | | 6.50 | 13.40 | 1.25 | SOT-23 | Now | Now |
| AM2328NE | Single N | 20 | 8 | | 0.0220 | | 0.0260 | | 6.50 | 13.40 | 1.25 | SOT-23 | Now | Now |
| AM2329P | Single P | -30 | 20 | 0.1120 | 0.1720 | | | | 2.50 | 4.50 | 1.25 | SOT-23 | Now | Now |
| AM2330N | Single N | 30 | 20 | 0.0320 | 0.0640 | | | | 5.20 | 4.00 | 1.25 | SOT-23 | Now | Now |
| AM2330NE | Single N | 30 | 20 | 0.0320 | 0.0440 | | | | 5.20 | 4.00 | 1.25 | SOT-23 | Now | Now |



SOT-23



| Part Number | Configuration | V _{DS} (V) | V _{GS} (V) | r _{DS(ON)} Max. (Ω) @ V _{GS} = | | | | | I _D (A) Max. | Q _g (nC) Typ. | P _D (W) Max. | Package | Sample Schedule | Production Schedule |
|-------------|---------------|---------------------|---------------------|--|--------|--------|--------|------|-------------------------|--------------------------|-------------------------|---------|-----------------|---------------------|
| | | | | 10V | 4.5V | 3.5V | 2.5V | 1.8V | | | | | | |
| AM2332N | Single N | 20 | 12 | | 0.0580 | | 0.0820 | | 4.70 | 7.50 | 1.25 | SOT-23 | Now | Now |
| AM2334N | Single N | 30 | 12 | | 0.0600 | | 0.0820 | | 3.50 | 6.30 | 1.25 | SOT-23 | Now | Now |
| AM2334NE | Single N | 30 | 12 | | 0.0600 | | 0.0820 | | 3.50 | 6.30 | 1.25 | SOT-23 | Now | Now |
| AM2336N | Single N | 30 | 12 | | 0.0320 | | 0.0640 | | 5.20 | 6.00 | 1.25 | SOT-23 | Now | Now |
| AM2337P | Single P | -30 | 12 | | 0.1120 | | 0.1720 | | 2.50 | 4.50 | 1.25 | SOT-23 | Now | Now |
| AM2339P | Single P | -30 | 8 | | 0.0570 | | 0.0890 | | 3.60 | 25.00 | 1.25 | SOT-23 | Now | Now |
| AM2340N | Single N | 40 | 20 | 0.0430 | 0.0500 | 0.0550 | | | 5.20 | 4.00 | 1.25 | SOT-23 | Now | Now |
| AM2340NE | Single N | 40 | 20 | 0.0430 | 0.0500 | 0.0550 | | | 5.20 | 4.00 | 1.25 | SOT-23 | Now | Now |
| AM2341P | Single P | -40 | 20 | 0.0820 | 0.1300 | | | | 3.20 | 15.00 | 1.25 | SOT-23 | Now | Now |
| AM2342N | Single N | 40 | 20 | 0.0860 | 0.1280 | | | | 5.20 | 4.00 | 1.25 | SOT-23 | Now | Now |
| AM2342NE | Single N | 40 | 20 | 0.0860 | 0.1280 | | | | 5.20 | 4.00 | 1.25 | SOT-23 | Now | Now |
| AM2343P | Single P | -30 | 20 | 0.0570 | 0.0890 | | | | 3.60 | 6.40 | 1.25 | SOT-23 | Now | Now |
| AM2343PE | Single P | -30 | 20 | 0.0570 | 0.0890 | | | | 3.60 | 6.40 | 1.25 | SOT-23 | Now | Now |
| AM2344N | Single N | 40 | 20 | 0.0260 | 0.0350 | | | | 5.70 | | 1.25 | SOT-23 | Jan-13 | Now |
| AM2345P | Single P | -40 | 20 | 0.1640 | 0.2600 | | | | 3.20 | 15.00 | 1.25 | SOT-23 | Now | Now |
| AM2345PE | Single P | -40 | 20 | 0.1640 | 0.2600 | | | | 3.20 | 15.00 | 1.25 | SOT-23 | Now | Now |
| AM2358N | Single N | 60 | 20 | 0.0920 | 0.1070 | | | | 2.80 | 3.60 | 1.25 | SOT-23 | Now | Now |
| AM2358NE | Single N | 60 | 20 | 0.0920 | 0.1070 | | | | 2.80 | 3.60 | 1.25 | SOT-23 | Now | Now |
| AM2359P | Single P | -60 | 20 | 0.3810 | 0.5610 | | | | 1.70 | 18.00 | 1.25 | SOT-23 | Now | Now |
| AM2359PE | Single P | -60 | 20 | 0.5000 | 0.6000 | | | | 1.40 | 18.00 | 1.25 | SOT-23 | Now | Now |
| AM2360N | Single N | 55 | 12 | | 0.1600 | | 0.2000 | | 2.40 | 3.60 | 1.25 | SOT-23 | Now | Now |
| AM2361P | Single P | -60 | 20 | 0.1550 | 0.2300 | | | | 3.40 | 18.00 | 1.25 | SOT-23 | Now | Now |
| AM2370N | Single N | 100 | 20 | 0.2800 | 0.3550 | | | | 1.80 | 7.00 | 1.25 | SOT-23 | Now | Now |
| AM2371P | Single P | -100 | 20 | 1.2000 | 1.3000 | | | | 0.90 | 7.00 | 1.25 | SOT-23 | Now | Now |
| AM2381P | Single P | -80 | 20 | 0.5000 | 0.6000 | | | | 1.40 | 3.00 | 1.25 | SOT-23 | Now | Now |
| AM2390N | Single N | 150 | 20 | 0.7000 | 1.2000 | | | | 1.10 | 7.00 | 1.25 | SOT-23 | Now | Now |
| AM2391P | Single P | -150 | 20 | 1.2000 | 1.3000 | | | | 0.90 | 7.00 | 1.25 | SOT-23 | Now | Now |
| AM2392N | Single N | 150 | 20 | 2.6000 | 2.8000 | | | | 0.60 | 3.00 | 1.25 | SOT-23 | Now | Now |
| AM2394NE | Single N | 150 | 20 | 1.2000 | 1.3000 | | | | 0.90 | 3.00 | 1.25 | SOT-23 | Now | Now |
| AM2398N | Single N | 60 | 20 | 0.1940 | 0.2730 | | | | 2.20 | 4.00 | 1.25 | SOT-23 | Now | Now |
| AM2398NE | Single N | 60 | 20 | 0.1940 | 0.2730 | | | | 2.20 | 4.00 | 1.25 | SOT-23 | Now | Now |
| BSS138N | Single N | 50 | 20 | 3.5000 | 6.0000 | | | | 0.26 | 3.50 | 0.50 | SOT-23 | Now | Now |

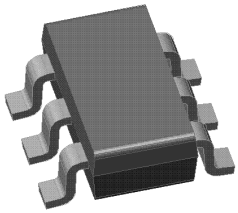


TSOP-6



ANALOG POWER

| Part Number | Configuration | V _{DS} (V) | V _{GS} (V) | r _{DS(ON)} Max. (Ω) @ V _{GS} = | | | | I _D (A) Max. | Q _g (nC) Typ. | P _D (W) Max. | Package | Sample Schedule | Production Schedule |
|-------------|---------------|---------------------|---------------------|--|--------|--------|--------|-------------------------|--------------------------|-------------------------|---------|-----------------|---------------------|
| | | | | 10V | 4.5V | 3.5V | 2.5V | | | | | | |
| AM3401P | Single P | -20 | 8 | | 0.0480 | | 0.0650 | 4.60 | 10.00 | 2.00 | TSOP-6 | Now | Now |
| AM3402N | Single N | 30 | 20 | 0.0270 | 0.0350 | | | 6.30 | 9.00 | 2.00 | TSOP-6 | Now | Now |
| AM3403P | Single P | -30 | 20 | 0.0560 | 0.0860 | | | 6.40 | 10.00 | 2.00 | TSOP-6 | Now | Now |
| AM3405P | Single P | -20 | 12 | | 0.0560 | | 0.0800 | 4.90 | 8.00 | 2.00 | TSOP-6 | Now | Now |
| AM3406N | Single N | 30 | 20 | 0.0320 | 0.0440 | | | 6.30 | 10.70 | 2.00 | TSOP-6 | Now | Now |
| AM3407PE | Single P | -20 | 12 | | 0.0340 | | 0.0480 | 5.00 | 16.00 | 1.40 | TSOP-6 | Now | Now |
| AM3411PE | Single P | -20 | 8 | | 0.0420 | | 0.0570 | 5.70 | 8.00 | 2.00 | TSOP-6 | Now | Now |
| AM3412N | Single N | 30 | 20 | 0.0270 | 0.0350 | | | 6.30 | 3.40 | 2.00 | TSOP-6 | Now | Now |
| AM3414N | Single N | 30 | 20 | 0.0230 | 0.0300 | | | 6.90 | 4.00 | 2.00 | TSOP-6 | Now | Now |
| AM3423P | Single P | -20 | 8 | | 0.0420 | | 0.0570 | 5.70 | 8.00 | 2.00 | TSOP-6 | Now | Now |
| AM3428N | Single N | 20 | 8 | | 0.0250 | | 0.0350 | 7.40 | 13.40 | 2.00 | TSOP-6 | Now | Now |
| AM3434N | Single N | 30 | 12 | | 0.0320 | | 0.0440 | 6.00 | 6.00 | 2.00 | TSOP-6 | Now | Now |
| AM3435P | Single P | -30 | 12 | | 0.0560 | | 0.0800 | 4.90 | 25.00 | 2.00 | TSOP-6 | Now | Now |
| AM3438NE | Single N | 30 | 20 | 0.0270 | 0.0350 | | | 6.30 | 9.00 | 2.00 | TSOP-6 | Now | Now |
| AM3441P | Single P | -20 | 8 | | 0.0900 | | 0.1300 | 2.90 | 8.00 | 2.00 | TSOP-6 | Now | Now |
| AM3443P | Single P | -20 | 12 | | 0.0650 | | 0.1000 | 4.50 | 8.00 | 2.00 | TSOP-6 | Now | Now |
| AM3444N | Single N | 40 | 20 | 0.0320 | 0.0440 | | | 6.30 | 4.70 | 2.00 | TSOP-6 | Now | Now |
| AM3445P | Single P | -20 | 8 | | 0.0380 | | 0.0540 | 5.60 | 19.00 | 2.00 | TSOP-6 | Now | Now |
| AM3446N | Single N | 20 | 12 | | 0.0320 | | 0.0440 | 6.00 | 5.00 | 2.00 | TSOP-6 | Now | Now |
| AM3447P | Single P | -40 | 20 | 0.0840 | 0.1150 | 0.1800 | | 4.40 | 6.40 | 2.00 | TSOP-6 | Now | Now |
| AM3454N | Single N | 30 | 20 | 0.0580 | 0.0820 | | | 4.80 | 10.70 | 2.00 | TSOP-6 | Now | Now |
| AM3455P | Single P | -30 | 20 | 0.1120 | 0.1720 | | | 4.50 | 10.00 | 2.00 | TSOP-6 | Now | Now |
| AM3456N | Single N | 30 | 20 | 0.0440 | 0.0640 | | | 5.50 | 4.00 | 2.00 | TSOP-6 | Now | Now |
| AM3456NE | Single N | 30 | 20 | 0.0320 | 0.0440 | | | 5.50 | 4.00 | 2.00 | TSOP-6 | Now | Now |
| AM3457P | Single P | -30 | 20 | 0.0500 | 0.0750 | | | 5.00 | 6.40 | 2.00 | TSOP-6 | Now | Now |
| AM3457PE | Single P | -30 | 20 | 0.0560 | 0.0830 | | | 4.00 | 6.40 | 2.00 | TSOP-6 | Now | Now |
| AM3458N | Single N | 60 | 20 | 0.0920 | 0.1070 | | | 3.40 | 3.60 | 2.00 | TSOP-6 | Now | Now |
| AM3459P | Single P | -60 | 20 | 0.3100 | 0.4650 | | | 2.10 | 18.00 | 2.00 | TSOP-6 | Now | Now |
| AM3463P | Single P | -60 | 20 | 0.1550 | 0.2300 | | | 3.00 | 18.00 | 2.00 | TSOP-6 | Now | Now |
| AM3470N | Single N | 100 | 20 | 0.2800 | 0.3550 | | | 2.20 | 7.00 | 2.00 | TSOP-6 | Now | Now |
| AM3471P | Single P | -100 | 20 | 0.3500 | 0.4500 | | | 2.00 | 6.00 | 2.00 | TSOP-6 | Now | Now |
| AM3472N | Single N | 100 | 20 | 0.1700 | 0.1850 | | | 2.90 | 3.00 | 2.00 | TSOP-6 | Now | Now |
| AM3480N | Single N | 80 | 20 | 0.1400 | 0.1600 | | | 3.10 | | 2.00 | TSOP-6 | Jan-13 | Now |
| AM3490N | Single N | 150 | 20 | 0.7000 | 1.2000 | | | 1.10 | 7.00 | 2.00 | TSOP-6 | Now | Now |
| AM3490NE | Single N | 150 | 20 | 0.7000 | 1.2000 | | | 1.10 | 7.00 | 2.00 | TSOP-6 | Now | Now |
| AM3492NE | Single N | 150 | 20 | 1.2000 | 1.3000 | | | 1.06 | 3.00 | 2.00 | TSOP-6 | Now | Now |



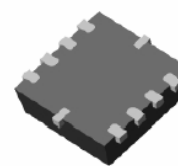
TSOP-6



| Part Number | Configuration | V _{DS} (V) | V _{GS} (V) | r _{DS(ON)} Max. (Ω) @ V _{GS} = | | | | | I _D (A) Max. | Q _g (nC) Typ. | P _D (W) Max. | Package | Sample Schedule | Production Schedule |
|-------------|---------------------|---------------------|---------------------|--|--------|------|--------|--------|-------------------------|--------------------------|-------------------------|---------|-----------------|---------------------|
| | | | | 10V | 4.5V | 3.5V | 2.5V | 1.8V | | | | | | |
| AM3520C | Complementary N | 20 | 12 | | 0.0580 | | 0.0820 | 0.1600 | 3.70 | 7.50 | 1.15 | TSOP-6 | Now | Now |
| | Complementary P | -20 | 12 | | 0.1120 | | 0.1720 | 0.2100 | 2.70 | 3.80 | | | | |
| AM3524C | Complementary N | 20 | 8 | | 0.0470 | | 0.0550 | | 4.10 | 7.50 | 1.15 | TSOP-6 | Now | Now |
| | Complementary P | -20 | 8 | | 0.0790 | | 0.1100 | | 3.20 | 3.80 | | | | |
| AM3531C | Complementary N | 30 | 12 | | 0.0580 | | 0.0820 | | 3.70 | 6.30 | 1.15 | TSOP-6 | Now | Now |
| | Complementary P | -30 | 12 | | 0.1120 | | 0.1720 | | 2.70 | 3.80 | | | | |
| AM3548C | Complementary N | 40 | 20 | 0.0630 | 0.0820 | | | | 3.70 | 2.20 | 1.15 | TSOP-6 | Now | Now |
| | Complementary P | -40 | 20 | 0.1720 | 0.2400 | | | | 2.70 | 3.80 | | | | |
| AM3560C | Complementary N | 60 | 20 | 0.1530 | 0.1850 | | | | 2.30 | 3.00 | 1.15 | TSOP-6 | Now | Now |
| | Complementary P | -60 | 20 | 0.3100 | 0.4050 | | | | 1.60 | 3.80 | | | | |
| AM3599C | Complementary N | 30 | 20 | 0.0630 | 0.0900 | | | | 3.70 | 2.20 | 1.15 | TSOP-6 | Now | Now |
| | Complementary P | -30 | 20 | 0.1120 | 0.1720 | | | | 2.70 | 3.80 | | | | |
| AM3599CE | Complementary N | 30 | 20 | 0.0900 | 0.1300 | | | | 3.00 | 1.50 | 1.15 | TSOP-6 | Now | Now |
| | Complementary P | -30 | 20 | 0.1900 | 0.2900 | | | | 2.10 | | | | | |
| AM3850C | Complementary N | 25 | 8 | | 0.4500 | | 0.7200 | | 1.20 | 1.64 | 1.15 | TSOP-6 | Now | Now |
| | Complementary P | -25 | 8 | | 1.0900 | | 1.5000 | | 0.90 | 1.10 | | | | |
| AM3808NE | Dual N CD | 20 | 8 | | 0.0200 | | 0.0280 | | 6.00 | 13.50 | 0.83 | TSOP-6 | Now | Now |
| AM3810N | Dual N CD | 20 | 10 | | 0.0245 | | 0.0380 | | 6.00 | 12.50 | 0.83 | TSOP-6 | Now | Now |
| AM3826N | Single N + Schottky | 20 | 8 | | 0.0470 | | 0.0550 | | 4.10 | 7.50 | 1.30 | TSOP-6 | Now | Now |
| AM3829P | Single P + Schottky | -20 | 8 | | 0.1300 | | 0.1900 | | 2.50 | 6.00 | 1.30 | TSOP-6 | Now | Now |
| AM3836N | Single N + Schottky | 30 | 12 | | 0.0630 | | 0.1100 | | 3.50 | 6.30 | 1.30 | TSOP-6 | Now | Now |
| AM3837P | Single P + Schottky | -30 | 12 | | 0.1300 | | 0.1900 | | 2.50 | 6.00 | 1.30 | TSOP-6 | Now | Now |
| AM3902N | Dual N | 25 | 8 | | 4.0000 | | 5.0000 | | 0.50 | 0.50 | 1.15 | TSOP-6 | Now | Now |
| AM3904N | Dual N | 25 | 8 | | 0.4500 | | 0.6300 | | 0.70 | 1.70 | 1.15 | TSOP-6 | Now | Now |
| AM3906N | Dual N | 30 | 20 | 0.0990 | 0.1420 | | | | 2.50 | 2.30 | 1.15 | TSOP-6 | Now | Now |
| AM3921P | Dual P | -20 | 12 | | 0.1300 | | 0.1900 | | 2.50 | 12.20 | 1.15 | TSOP-6 | Now | Now |
| AM3922N | Dual N | 20 | 8 | | 0.0470 | | 0.0550 | | 4.10 | 7.50 | 1.15 | TSOP-6 | Now | Now |
| AM3925P | Dual P | -20 | 8 | | 0.0790 | | 0.1100 | | 3.20 | 12.20 | 1.15 | TSOP-6 | Now | Now |
| AM3930N | Dual N | 30 | 20 | 0.0580 | 0.0820 | | | | 3.50 | 2.20 | 1.15 | TSOP-6 | Now | Now |
| AM3932N | Dual N | 30 | 12 | | 0.0630 | | 0.1100 | | 3.50 | 6.30 | 1.15 | TSOP-6 | Now | Now |
| AM3932NE | Dual N | 30 | 12 | | 0.0630 | | 0.0820 | | 3.50 | 6.30 | 1.15 | TSOP-6 | Now | Now |
| AM3933P | Dual P | -30 | 12 | | 0.1300 | | 0.1900 | | 2.50 | 6.00 | 1.15 | TSOP-6 | Now | Now |
| AM3940N | Dual N | 40 | 20 | 0.0580 | 0.0820 | | | | 3.50 | 2.20 | 1.15 | TSOP-6 | Now | Now |
| AM3940NE | Dual N | 40 | 20 | 0.0580 | 0.0820 | | | | 3.50 | 2.20 | 1.15 | TSOP-6 | Now | Now |
| AM3949P | Dual P | -40 | 20 | 0.1850 | 0.2400 | | | | 2.50 | 6.00 | 1.15 | TSOP-6 | Now | Now |
| AM3961P | Dual P | -60 | 20 | 0.3100 | 0.4650 | | | | 1.70 | 18.00 | 1.15 | TSOP-6 | Now | Now |
| AM3962N | Dual N | 60 | 20 | 0.1530 | 0.1850 | | | | 2.30 | 3.00 | 1.15 | TSOP-6 | Now | Now |
| AM3962NE | Dual N | 60 | 20 | 0.1530 | 0.1850 | | | | 2.30 | 3.00 | 1.15 | TSOP-6 | Now | Now |
| AM3993P | Dual P | -30 | 20 | 0.1300 | 0.1900 | | | | 2.50 | 6.00 | 1.15 | TSOP-6 | Now | Now |
| AM3998N | Dual N | 20 | 12 | | 0.0580 | | 0.0820 | | 3.70 | 7.50 | 1.15 | TSOP-6 | Now | Now |



DFN 3X3



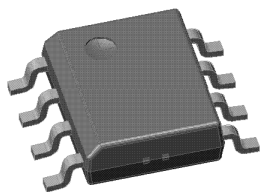
| Part Number | Configuration | V _{DS} (V) | V _{GS} (V) | r _{DS(ON)} Max. (Ω) @ V _{GS} = | | | | | I _D (A) Max. | Q _g (nC) Typ. | P _D (W) Max. | Package | Sample Schedule | Production Schedule |
|-------------|---------------|---------------------|---------------------|--|--------|--------|--------|--------|-------------------------|--------------------------|-------------------------|---------|-----------------|---------------------|
| | | | | 10V | 4.5V | 3.5V | 2.5V | 1.8V | | | | | | |
| AM7000N | Single N | 200 | 20 | 0.2950 | 0.3400 | | | | 3.00 | 15.00 | 3.50 | DFN3X3 | Now | Now |
| AM7100N | Single N | 100 | 20 | 0.0620 | 0.0720 | | | | 6.20 | 13.00 | 3.50 | DFN3X3 | Now | Now |
| AM7101P | Single P | -100 | 20 | 0.2750 | 0.2950 | | | | 3.00 | 16.00 | 3.50 | DFN3X3 | Now | Now |
| AM7150N | Single N | 150 | 20 | 0.1850 | 0.1900 | | | | 3.60 | 16.00 | 3.50 | DFN3X3 | Now | Now |
| AM7151P | Single P | -150 | 20 | 0.5000 | 0.5300 | | | | 3.00 | 16.00 | 3.50 | DFN3X3 | Now | Now |
| AM7300N | Single N | 300 | 20 | 0.6000 | 0.9000 | | | | 1.50 | 19.00 | 3.50 | DFN3X3 | Now | Now |
| AM7302N | Single N | 30 | 20 | 0.0040 | 0.0060 | | | | 24.20 | 32.00 | 3.50 | DFN3X3 | Now | Now |
| AM7304N | Single N | 30 | 20 | 0.0100 | 0.0130 | | | | 15.30 | 10.00 | 3.50 | DFN3X3 | Now | Now |
| AM7321P | Single P | -20 | 8 | | 0.0140 | 0.0190 | | | 13.00 | 25.00 | 3.50 | DFN3X3 | Now | Now |
| AM7330N | Single N | 30 | 20 | 0.0220 | 0.0300 | | | | 11.00 | 4.00 | 3.50 | DFN3X3 | Now | Now |
| AM7331P | Single P | -30 | 20 | 0.0130 | 0.0190 | | | | 13.40 | 25.00 | 3.50 | DFN3X3 | Now | Now |
| AM7331PE | Single P | -30 | 20 | 0.0130 | 0.0190 | | | | 13.40 | 25.00 | 3.50 | DFN3X3 | Now | Now |
| AM7332N | Single N | 30 | 20 | 0.0135 | 0.0200 | | | | 17.00 | 12.50 | 3.50 | DFN3X3 | Now | Now |
| AM7333P | Single P | -30 | 20 | 0.0200 | 0.0360 | | | | 10.90 | 33.00 | 3.50 | DFN3X3 | Now | Now |
| AM7333PE | Single P | -30 | 20 | 0.0200 | 0.0360 | | | | 10.90 | 33.00 | 3.50 | DFN3X3 | Now | Now |
| AM7334N | Single N | 30 | 20 | 0.0085 | 0.0115 | | | | 17.00 | 11.00 | 3.50 | DFN3X3 | Now | Now |
| AM7336N | Single N | 30 | 8 | | 0.0090 | | 0.0110 | | 35.00 | 20.00 | 3.50 | DFN3X3 | Now | Now |
| AM7338N | Single N | 30 | 20 | 0.0069 | 0.0098 | | | | 19.00 | 11.00 | 3.50 | DFN3X3 | Now | Now |
| AM7341P | Single P | -40 | 20 | 0.0190 | 0.0270 | | | | 12.00 | 28.00 | 3.50 | DFN3X3 | Now | Now |
| AM7360N | Single N | 60 | 20 | 0.0220 | 0.0260 | | | | 11.00 | 28.00 | 3.50 | DFN3X3 | Now | Now |
| AM7361P | Single P | -60 | 20 | 0.0380 | 0.0450 | | | | 11.00 | 28.00 | 3.50 | DFN3X3 | Now | Now |
| AM7363P | Single P | -60 | 20 | 0.0470 | 0.0600 | | | | 7.10 | 14.00 | 3.50 | DFN3X3 | Now | Now |
| AM7365P | Single P | -60 | 20 | 0.0240 | 0.0320 | | | | 9.90 | 26.00 | 3.50 | DFN3X3 | Jan-13 | Now |
| AM7380N | Single N | 80 | 20 | 0.0260 | 0.0360 | | | | 12.00 | 15.00 | 3.50 | DFN3X3 | Now | Now |
| AM7381P | Single P | -80 | 20 | 0.1290 | 0.1490 | | | | 11.00 | 28.00 | 3.50 | DFN3X3 | Now | Now |
| AM7382N | Single N | 80 | 20 | 0.0250 | 0.0280 | | | | 9.70 | 30.00 | 3.50 | DFN3X3 | Jan-13 | Now |
| AM7390NS | Single N | 30 | 20 | 0.0100 | 0.0140 | | | | 16.00 | 15.00 | 3.50 | DFN3X3 | Now | Now |
| AM7630N | Dual N | 30 | 20 | 0.0190 | 0.0280 | | | | 12.00 | 5.00 | 3.50 | DFN3X3 | Now | Now |
| AM7640N | Dual N | 40 | 20 | 0.0350 | 0.0450 | | | | 11.00 | 28.00 | 3.50 | DFN3X3 | Now | Now |
| AMCC431P | Single P | -30 | 20 | 0.0600 | 0.0900 | | | | 5.90 | 7.00 | 3.10 | DFN3X3 | Now | Now |
| AMCC920NE | Dual N | 20 | 8 | | 0.0200 | | 0.0240 | 0.0390 | 7.10 | 13.40 | 1.50 | DFN3X3 | Now | Now |
| AMCC921PE | Dual P | -20 | 8 | | 0.0280 | | 0.0450 | 0.0780 | 6.00 | 11.00 | 1.50 | DFN3X3 | Now | Now |
| AMCC922NE | Dual N | 20 | 8 | | 0.0150 | | 0.0180 | | 8.20 | 13.40 | 1.50 | DFN3X3 | Now | Now |
| AMCC924NE | Dual N | 20 | 8 | | 0.0125 | | 0.0145 | | 9.00 | 14.00 | 1.50 | DFN3X3 | Now | Now |



TSSOP-8



| Part Number | Configuration | V _{DS} (V) | V _{GS} (V) | r _{DS(ON)} Max. (Ω) @ V _{GS} = | | | | | I _D (A) Max. | Q _g (nC) Typ. | P _D (W) Max. | Package | Sample Schedule | Production Schedule |
|-------------|-----------------|---------------------|---------------------|--|--------|------|--------|--------|-------------------------|--------------------------|-------------------------|---------|-----------------|---------------------|
| | | | | 10V | 4.5V | 3.5V | 2.5V | 1.8V | | | | | | |
| AM6411P | Single P | -20 | 12 | | 0.0130 | | 0.0190 | 0.0350 | 9.50 | 55.00 | 1.80 | TSSOP-8 | Now | Now |
| AM6520C | Complementary N | 20 | 8 | | 0.0470 | | 0.0660 | 0.0950 | 4.70 | 7.00 | 1.20 | TSSOP-8 | Now | Now |
| | Complementary P | -20 | 8 | | 0.0470 | | 0.0720 | 0.0950 | 4.70 | 12.00 | | | | |
| AM6544C | Complementary N | 30 | 20 | 0.0320 | 0.0460 | | | | 4.30 | 4.70 | 1.20 | TSSOP-8 | Now | Now |
| | Complementary P | -30 | 20 | 0.0520 | 0.0800 | | | | 3.80 | 8.00 | | | | |
| AM6920NH | Dual N | 20 | 8 | | 0.0220 | | 0.0300 | 0.0460 | 6.80 | 6.20 | 1.20 | TSSOP-8 | Now | Now |
| AM6921P | Dual P | -20 | 8 | | 0.0500 | | 0.0600 | 0.0750 | 4.00 | 12.20 | 1.20 | TSSOP-8 | Now | Now |
| AM6922NH | Dual N | 20 | 8 | | 0.0180 | | 0.0240 | 0.0340 | 6.70 | 6.20 | 1.20 | TSSOP-8 | Now | Now |
| AM6923P | Dual P | -12 | 8 | | 0.0240 | | 0.0330 | 0.0480 | 5.70 | 19.00 | 1.50 | TSSOP-8 | Now | Now |
| AM6924NHE | Dual N | 20 | 8 | | 0.0150 | | 0.0180 | | 7.40 | 16.00 | 1.20 | TSSOP-8 | Jan-13 | Now |
| AM6931P | Dual P | -30 | 20 | 0.0310 | 0.0480 | | | | 5.10 | 10.00 | 1.50 | TSSOP-8 | Now | Now |
| AM6968N | Dual N | 20 | 12 | | 0.0260 | | 0.0330 | 0.0640 | 6.80 | 13.40 | 1.20 | TSSOP-8 | Now | Now |
| AM6968NE | Dual N | 20 | 8 | | 0.0260 | | 0.0350 | 0.0460 | 7.10 | 13.40 | 1.50 | TSSOP-8 | Now | Now |

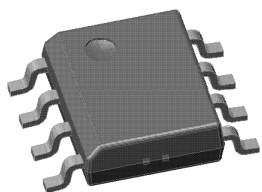


SO-8



ANALOG POWER

| Part Number | Configuration | V _{DS} (V) | V _{GS} (V) | r _{DS(ON)} Max. (Ω) @ V _{GS} = | | | | | I _D (A) Max. | Q _g (nC) Typ. | P _D (W) Max. | Package | Sample Schedule | Production Schedule |
|-------------|---------------|---------------------|---------------------|--|--------|------|--------|--------|----------------------------|-----------------------------|----------------------------|---------|-----------------|---------------------|
| | | | | 10V | 4.5V | 3.5V | 2.5V | 1.8V | | | | | | |
| AM4302N | Single N | 30 | 12 | | 0.0260 | | 0.0500 | | 9.00 | 5.50 | 3.10 | SO-8 | Now | Now |
| AM4362N | Single N | 30 | 20 | 0.0060 | 0.0080 | | | | 20.00 | 25.00 | 3.10 | SO-8 | Now | Now |
| AM4380N | Single N | 200 | 20 | | | | | | | | 3.10 | SO-8 | Jan-13 | Now |
| AM4390N | Single N | 150 | 20 | 0.6250 | 0.9000 | | | | 1.90 | 7.00 | 3.10 | SO-8 | Now | Now |
| AM4392N | Single N | 150 | 20 | 0.2550 | 0.2900 | | | | 3.90 | 12.50 | 3.10 | SO-8 | Now | Now |
| AM4394N | Single N | 150 | 20 | 0.0500 | 0.0600 | | | | 6.50 | 50.00 | 3.10 | SO-8 | Now | Now |
| AM4396N | Single N | 150 | 20 | 0.1100 | 0.1200 | | | | 4.40 | 20.00 | 3.10 | SO-8 | Now | Now |
| AM4400N | Single N | 60 | 20 | 0.0820 | 0.1150 | | | | 4.60 | 3.60 | 3.10 | SO-8 | Now | Now |
| AM4400NE | Single N | 60 | 20 | 0.0820 | 0.1150 | | | | 4.60 | 3.60 | 3.10 | SO-8 | Now | Now |
| AM4402N | Single N | 60 | 20 | 0.0380 | 0.0500 | | | | 6.70 | 8.50 | 3.10 | SO-8 | Now | Now |
| AM4407P | Single P | -30 | 20 | 0.0090 | 0.0130 | | | | 15.00 | 37.00 | 3.10 | SO-8 | Now | Now |
| AM4407PE | Single P | -30 | 20 | 0.0090 | 0.0130 | | | | 15.00 | 70.00 | 3.10 | SO-8 | Now | Now |
| AM4409P | Single P | -20 | 12 | | 0.0200 | | 0.0290 | 0.0540 | 11.00 | 30.00 | 3.10 | SO-8 | Now | Now |
| AM4410N | Single N | 30 | 20 | 0.0135 | 0.0200 | | | | 13.00 | 12.50 | 3.10 | SO-8 | Now | Now |
| AM4415P | Single P | -20 | 12 | | 0.0084 | | 0.0104 | | 13.50 | 66.00 | 3.10 | SO-8 | Now | Now |
| AM4417P | Single P | -60 | 20 | 0.0170 | 0.0230 | | | | 9.30 | 46.00 | 3.10 | SO-8 | Now | Now |
| AM4424N | Single N | 20 | 8 | | 0.0220 | | 0.0280 | | 9.70 | 5.50 | 3.10 | SO-8 | Now | Now |
| AM4430N | Single N | 30 | 12 | | 0.0135 | | 0.0200 | | 13.00 | 12.50 | 3.10 | SO-8 | Now | Now |
| AM4431P | Single P | -30 | 20 | 0.0050 | 0.0070 | | | | 21.00 | 120.00 | 3.10 | SO-8 | Now | Now |
| AM4432N | Single N | 30 | 12 | | 0.0110 | | 0.0120 | | 16.80 | 15.00 | 3.10 | SO-8 | Now | Now |
| AM4434N | Single N | 30 | 12 | | 0.0060 | | 0.0080 | | 18.60 | 25.00 | 3.10 | SO-8 | Now | Now |
| AM4436N | Single N | 30 | 20 | 0.0046 | 0.0068 | | | | | | 3.10 | SO-8 | Now | Now |
| AM4438N | Single N | 30 | 8 | | 0.0260 | | 0.0500 | | 9.00 | 5.50 | 3.10 | SO-8 | Now | Now |

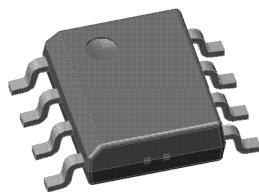


SO-8



ANALOG POWER

| Part Number | Configuration | V _{DS} (V) | V _{GS} (V) | r _{DS(ON)} Max. (Ω) @ V _{GS} = | | | | | I _D (A) Max. | Q _g (nC) Typ. | P _D (W) Max. | Package | Sample Schedule | Production Schedule |
|-------------|---------------------|---------------------|---------------------|--|--------|------|--------|--------|-------------------------|--------------------------|-------------------------|---------|-----------------|---------------------|
| | | | | 10V | 4.5V | 3.5V | 2.5V | 1.8V | | | | | | |
| AM4460NT | Single N | 60 | 20 | 0.0500 | 0.0600 | | | | 6.40 | 3.80 | 3.10 | SO-8 | Now | Now |
| AM4462N | Single N | 60 | 20 | 0.0220 | 0.0260 | | | | 9.70 | 8.50 | 3.10 | SO-8 | Now | Now |
| AM4463P | Single P | -20 | 12 | | 0.0130 | | 0.0190 | 0.0350 | 11.50 | 33.40 | 3.10 | SO-8 | Now | Now |
| AM4466N | Single N | 60 | 20 | 0.0060 | 0.0066 | | | | 23.00 | 70.00 | 3.10 | SO-8 | Now | Now |
| AM4470N | Single N | 200 | 20 | 0.2950 | 0.3350 | | | | 2.70 | 8.50 | 3.10 | SO-8 | Now | Now |
| AM4472N | Single N | 200 | 20 | 0.0800 | 0.0900 | | | | 5.10 | 54.00 | 3.10 | SO-8 | Jan-13 | Now |
| AM4480N | Single N | 80 | 20 | 0.0410 | 0.0570 | | | | 7.10 | 8.50 | 3.10 | SO-8 | Now | Now |
| AM4481P | Single P | -80 | 20 | 0.1260 | 0.1460 | | | | 6.80 | 18.00 | 3.10 | SO-8 | Now | Now |
| AM4482N | Single N | 80 | 20 | 0.0360 | 0.0430 | | | | 7.60 | 15.00 | 3.10 | SO-8 | Now | Now |
| AM4490N | Single N | 100 | 20 | 0.0780 | 0.0920 | | | | 5.20 | 12.50 | 3.10 | SO-8 | Now | Now |
| AM4490NE | Single N | 100 | 20 | 0.0780 | 0.0920 | | | | 5.20 | 12.50 | 3.10 | SO-8 | Now | Now |
| AM4492N | Single N | 100 | 20 | 0.0260 | 0.0360 | | | | 12.00 | 15.00 | 3.10 | SO-8 | Now | Now |
| AM4494N | Single N | 100 | 20 | 0.0180 | 0.0230 | | | | 11.00 | 50.00 | 3.10 | SO-8 | Now | Now |
| AM4499P | Single P | -60 | 20 | 0.0450 | 0.0600 | | | | 6.80 | 18.00 | 3.10 | SO-8 | Now | Now |
| AM4811P | Single P | -30 | 20 | 0.0300 | 0.0520 | | | | 9.50 | 15.00 | 3.10 | SO-8 | Now | Now |
| AM4825P | Single P | -30 | 20 | 0.0130 | 0.0190 | | | | 11.50 | 64.00 | 3.10 | SO-8 | Now | Now |
| AM4825PE | Single P | -30 | 20 | 0.0130 | 0.0190 | | | | 11.50 | 64.00 | 3.10 | SO-8 | Now | Now |
| AM4830NS | Single N + Schottky | 30 | 20 | 0.0135 | 0.0200 | | | | 13.00 | 12.50 | 3.10 | SO-8 | Now | Now |
| AM4835P | Single P | -30 | 20 | 0.0190 | 0.0300 | | | | 9.50 | 15.30 | 3.10 | SO-8 | Now | Now |
| AM4835EP | Single P | -30 | 20 | 0.0190 | 0.0300 | | | | 11.00 | 12.80 | 3.10 | SO-8 | Now | Now |
| AM4840N | Single N | 40 | 20 | 0.0220 | 0.0270 | | | | 9.70 | 12.50 | 3.10 | SO-8 | Now | Now |
| AM4841P | Single P | -40 | 20 | 0.0350 | 0.0450 | | | | 9.00 | 15.30 | 3.10 | SO-8 | Now | Now |
| AM4842N | Single N | 40 | 20 | 0.0090 | 0.0120 | | | | 23.00 | 25.00 | 3.10 | SO-8 | Now | Now |
| AM4844NE | Single N | 40 | 20 | 0.0320 | 0.0440 | | | | 8.10 | 12.50 | 3.10 | SO-8 | Now | Now |
| AM4874N | Single N | 30 | 20 | 0.0110 | 0.0120 | | | | 17.50 | 15.00 | 3.10 | SO-8 | Now | Now |
| AM4890N | Dual N | 150 | 20 | 0.7000 | 1.2000 | | | | 1.90 | 7.00 | 2.10 | SO-8 | Now | Now |
| AM4892N | Dual N | 150 | 20 | 0.2550 | 0.2900 | | | | 3.90 | 12.50 | 2.10 | SO-8 | Now | Now |

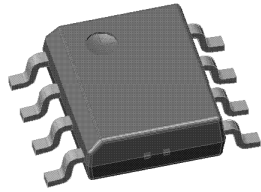


SO-8



ANALOG POWER

| Part Number | Configuration | V _{DS} (V) | V _{GS} (V) | r _{DS(ON)} Max. (Ω) @ V _{GS} = | | | | | I _D (A) Max. | Q _g (nC) Typ. | P _D (W) Max. | Package | Sample Schedule | Production Schedule |
|-------------|---------------|---------------------|---------------------|--|--------|------|--------|--------|-------------------------|--------------------------|-------------------------|---------|-----------------|---------------------|
| | | | | 10V | 4.5V | 3.5V | 2.5V | 1.8V | | | | | | |
| AM4902N | Dual N | 60 | 20 | 0.0350 | 0.0450 | | | | 6.40 | 12.50 | 2.10 | SO-8 | Now | Now |
| AM4910N | Dual N | 30 | 20 | 0.0135 | 0.0200 | | | | 10.00 | 20.00 | 2.10 | SO-8 | Now | Now |
| AM4915P | Dual P | -30 | 20 | 0.0175 | 0.0230 | | | | 9.50 | 64.00 | 2.10 | SO-8 | Now | Now |
| AM4917P | Dual P | -20 | 12 | | 0.0175 | | 0.0230 | 0.0480 | 9.50 | 33.00 | 2.10 | SO-8 | Now | Now |
| AM4919P | Dual P | -20 | 12 | | 0.0210 | | 0.0350 | 0.0570 | 8.20 | 30.00 | 2.10 | SO-8 | Now | Now |
| AM4920N | Dual N | 30 | 20 | 0.0340 | 0.0410 | | | | 6.90 | 4.00 | 2.10 | SO-8 | Now | Now |
| AM4922N | Dual N | 20 | 8 | | 0.0220 | | 0.0280 | | 7.80 | 5.50 | 2.10 | SO-8 | Now | Now |
| AM4924N | Dual N | 20 | 8 | | 0.0110 | | 0.0140 | | 11.00 | 5.50 | 2.10 | SO-8 | Now | Now |
| AM4926N | Dual N | 20 | 12 | | 0.0580 | | 0.0820 | | 5.00 | 7.50 | 2.10 | SO-8 | Now | Now |
| AM4929P | Dual P | -20 | 12 | | 0.0520 | | 0.0890 | 0.1240 | 4.90 | 16.70 | 2.10 | SO-8 | Now | Now |
| AM4930N | Dual N | 30 | 12 | | 0.0580 | | 0.0820 | | 5.00 | 6.30 | 2.10 | SO-8 | Now | Now |
| AM4932N | Dual N | 30 | 12 | | 0.0135 | | 0.0200 | | 10.00 | 20.00 | 2.10 | SO-8 | Now | Now |
| AM4934N | Dual N | 30 | 20 | 0.0180 | 0.0260 | | | | 8.90 | 3.00 | 2.10 | SO-8 | Now | Now |
| AM4935P | Dual P | -30 | 20 | 0.0210 | 0.0350 | | | | 8.00 | 15.00 | 2.10 | SO-8 | Now | Now |
| AM4940N | Dual N | 40 | 20 | 0.0220 | 0.0270 | | | | 8.30 | 20.00 | 2.10 | SO-8 | Now | Now |
| AM4942N | Dual N | 40 | 20 | 0.0750 | 0.0950 | | | | 4.40 | 20.00 | 2.10 | SO-8 | Now | Now |
| AM4953P | Dual P | -30 | 20 | 0.0520 | 0.0890 | | | | 5.20 | 15.00 | 2.10 | SO-8 | Now | Now |
| AM4960N | Dual N | 60 | 20 | 0.0890 | 0.1040 | | | | 4.00 | 3.60 | 2.10 | SO-8 | Now | Now |
| AM4962NE | Dual N | 60 | 20 | 0.0350 | 0.0450 | | | | 6.40 | 12.50 | 2.10 | SO-8 | Now | Now |
| AM4963P | Dual P | -60 | 20 | 0.1200 | 0.1800 | | | | 3.50 | 5.50 | 2.10 | SO-8 | Now | Now |
| AM4964NT | Dual N | 60 | 20 | 0.0500 | 0.0600 | | | | 6.40 | 3.80 | 2.10 | SO-8 | Now | Now |
| AM4990N | Dual N | 100 | 20 | 0.0810 | 0.0920 | | | | 10.00 | 20.00 | 2.10 | SO-8 | Now | Now |
| AM4990NE | Dual N | 100 | 20 | 0.0810 | 0.0920 | | | | 10.00 | 20.00 | 2.10 | SO-8 | Now | Now |
| AM4992N | Dual N | 100 | 20 | 0.4300 | 0.4800 | | | | 1.80 | 3.00 | 2.10 | SO-8 | Now | Now |
| AM4998N | Dual N | 30 | 12 | | 0.0320 | | 0.0400 | | 6.50 | 6.00 | 2.10 | SO-8 | Now | Now |
| AM6612N | Single N | 30 | 20 | 0.0220 | 0.0300 | | | | 9.40 | 4.00 | 3.10 | SO-8 | Now | Now |
| AM6612NE | Single N | 30 | 20 | 0.0220 | 0.0300 | | | | 9.40 | 4.00 | 3.10 | SO-8 | Now | Now |
| AM6930N | Dual N | 30 | 20 | 0.0400 | 0.0550 | | | | 5.50 | 4.00 | 2.10 | SO-8 | Now | Now |
| AM9410N | Single N | 30 | 20 | 0.0240 | 0.0330 | | | | 8.10 | 4.00 | 3.10 | SO-8 | Now | Now |
| AM9412N | Single N | 30 | 20 | 0.0220 | 0.0360 | | | | 9.00 | 4.00 | 3.10 | SO-8 | Now | Now |
| AM9433P | Single P | -20 | 12 | | 0.0490 | | 0.0690 | 0.1400 | 5.70 | 16.70 | 3.10 | SO-8 | Now | Now |
| AM9435P | Single P | -30 | 20 | 0.0490 | 0.0750 | | | | 6.50 | 6.40 | 3.10 | SO-8 | Now | Now |
| AM9926N | Dual N | 20 | 12 | | 0.0300 | | 0.0400 | | 6.00 | 13.40 | 2.10 | SO-8 | Now | Now |
| AM9945N | Dual N | 60 | 20 | 0.0890 | 0.1040 | | | | 3.60 | 3.60 | 2.10 | SO-8 | Now | Now |
| AM9945NE | Dual N | 60 | 20 | 0.0890 | 0.1040 | | | | 3.60 | 3.60 | 2.10 | SO-8 | Now | Now |



SO-8



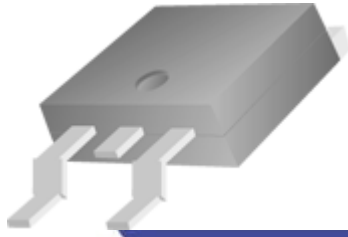
| Part Number | Configuration | V _{DS} (V) | V _{GS} (V) | r _{DS(ON)} Max. (Ω) @ V _{GS} = | | | | | I _D (A) Max. | Q _g (nC) Typ. | P _D (W) Max. | Package | Sample Schedule | Production Schedule |
|-------------|-----------------|---------------------|---------------------|--|--------|------|--------|------|-------------------------|--------------------------|-------------------------|---------|-----------------|---------------------|
| | | | | 10V | 4.5V | 3.5V | 2.5V | 1.8V | | | | | | |
| AM4502AC | Complementary N | 30 | 12 | | 0.0310 | | | | 6.90 | 6.00 | 2.10 | SO-8 | Now | Now |
| | Complementary P | -30 | 20 | | 0.0330 | | | | 6.80 | 15.30 | | | | |
| AM4502C | Complementary N | 30 | 20 | 0.0160 | 0.0200 | | | | 10.00 | 12.00 | 2.10 | SO-8 | Now | Now |
| | Complementary P | -30 | 20 | 0.0190 | 0.0300 | | | | 8.50 | 13.00 | | | | |
| AM4502CE | Complementary N | 30 | 20 | 0.0160 | 0.0200 | | | | 10.00 | 12.00 | 2.10 | SO-8 | Now | Now |
| | Complementary P | -30 | 20 | 0.0230 | 0.0330 | | | | 8.50 | 13.00 | | | | |
| AM4512AC | Complementary N | 30 | 12 | | 0.0600 | | | | 5.00 | 6.30 | 2.10 | SO-8 | Now | Now |
| | Complementary P | -30 | 20 | | 0.0800 | | | | 5.20 | 10.00 | | | | |
| AM4512C | Complementary N | 30 | 20 | 0.0310 | 0.0400 | | | | 6.90 | 4.00 | 2.10 | SO-8 | Now | Now |
| | Complementary P | -30 | 20 | 0.0520 | 0.0800 | | | | 5.20 | 10.00 | | | | |
| AM4512CE | Complementary N | 30 | 20 | 0.0310 | 0.0400 | | | | 6.90 | 4.00 | 2.10 | SO-8 | Now | Now |
| | Complementary P | -30 | 20 | 0.0520 | 0.0800 | | | | 5.20 | 10.00 | | | | |
| AM4520H | Complementary N | 20 | 8 | | 0.0470 | | 0.0550 | | 6.60 | 6.30 | 3.10 | SO-8 | Now | Now |
| | Complementary P | -20 | 8 | | 0.0790 | | 0.1100 | | 5.20 | 10.00 | | | | |
| AM4528C | Complementary N | 20 | 16 | 0.0230 | 0.0300 | | | | 10.00 | 20.00 | 2.10 | SO-8 | Now | Now |
| | Complementary P | -20 | -8 | | 0.0700 | | 0.1100 | | 4.50 | 4.00 | | | | |
| AM4530C | Complementary N | 30 | 20 | 0.0500 | 0.0820 | | | | 5.30 | 2.20 | 2.10 | SO-8 | Now | Now |
| | Complementary P | -30 | 20 | 0.0520 | 0.0800 | | | | 5.20 | 10.00 | | | | |
| AM4530CE | Complementary N | 30 | 20 | 0.0500 | 0.0820 | | | | 5.30 | 2.20 | 2.10 | SO-8 | Now | Now |
| | Complementary P | -30 | 20 | 0.0520 | 0.0800 | | | | 5.20 | 10.00 | | | | |
| AM4531C | Complementary N | 30 | 12 | | 0.0580 | | 0.0820 | | 5.00 | 6.30 | 2.10 | SO-8 | Now | Now |
| | Complementary P | -30 | 12 | | 0.1120 | | 0.1720 | | 3.60 | 10.00 | | | | |
| AM4533C | Complementary N | 30 | 12 | | 0.0310 | | 0.0400 | | 6.90 | 6.00 | 2.10 | SO-8 | Now | Now |
| | Complementary P | -30 | 12 | | 0.0520 | | 0.0800 | | 5.20 | 25.00 | | | | |
| AM4534C | Complementary N | 30 | 20 | 0.0280 | 0.0400 | | | | 7.00 | 4.00 | 2.10 | SO-8 | Now | Now |
| | Complementary P | -30 | 12 | | 0.0520 | | 0.0800 | | 5.20 | 25.00 | | | | |
| AM4536C | Complementary N | 30 | 20 | 0.0280 | 0.0420 | | | | 7.10 | 4.00 | 2.10 | SO-8 | Now | Now |
| | Complementary P | -30 | 20 | 0.0390 | 0.0590 | | | | 6.00 | 10.00 | | | | |
| AM4540C | Complementary N | 40 | 20 | 0.0890 | 0.1040 | | | | 4.00 | 3.60 | 2.10 | SO-8 | Now | Now |
| | Complementary P | -40 | 20 | 0.0690 | 0.1060 | | | | 4.60 | 13.00 | | | | |
| AM4541C | Complementary N | 40 | 20 | 0.0320 | 0.0420 | | | | 6.50 | 5.50 | 2.10 | SO-8 | Now | Now |
| | Complementary P | -40 | 20 | 0.0690 | 0.1060 | | | | 4.60 | 6.60 | | | | |
| AM4541CE | Complementary N | 40 | 20 | 0.0320 | 0.0420 | | | | 6.50 | 5.50 | 2.10 | SO-8 | Now | Now |
| | Complementary P | -40 | 20 | 0.0690 | 0.1060 | | | | 4.60 | 6.60 | | | | |
| AM4542C | Complementary N | 40 | 20 | 0.0220 | 0.0270 | | | | 8.30 | 13.00 | 2.10 | SO-8 | Now | Now |
| | Complementary P | -40 | 20 | 0.0300 | 0.0400 | | | | 7.60 | 14.00 | | | | |
| AM4543C | Complementary N | 40 | 20 | 0.0320 | 0.0420 | | | | 6.50 | 13.00 | 2.10 | SO-8 | Now | Now |
| | Complementary P | -40 | 20 | 0.0300 | 0.0400 | | | | 7.60 | 14.00 | | | | |
| AM4560C | Complementary N | 60 | 20 | 0.0890 | 0.1040 | | | | 3.60 | 3.60 | 2.10 | SO-8 | Now | Now |
| | Complementary P | -60 | 20 | 0.1200 | 0.1800 | | | | 3.50 | 5.50 | | | | |
| AM4599C | Complementary N | 60 | 20 | 0.0350 | 0.0500 | | | | 7.80 | 12.00 | 2.10 | SO-8 | Now | Now |
| | Complementary P | -60 | 20 | 0.0450 | 0.0600 | | | | 6.90 | 13.00 | | | | |
| AM8958C | Complementary N | 30 | 20 | 0.0280 | 0.0400 | | | | 7.00 | 4.00 | 2.10 | SO-8 | Now | Now |
| | Complementary P | -30 | 20 | 0.0520 | 0.0800 | | | | 5.00 | 9.60 | | | | |



SOIC-8PP



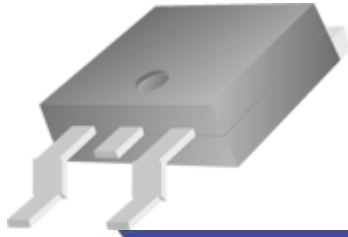
| Part Number | Configuration | V _{DS} (V) | V _{GS} (V) | r _{DS(on)} Max. (Ω) @ V _{GS} = | | | | | I _D (A) Max. | Q _g (nC) Typ. | P _D (W) Max. | Package | Sample Schedule | Production Schedule |
|-------------|-----------------|---------------------|---------------------|--|--------|------|--------|------|-------------------------|--------------------------|-------------------------|----------|-----------------|---------------------|
| | | | | 10V | 4.5V | 3.5V | 2.5V | 1.8V | | | | | | |
| AM7200N | Single N | 200 | 20 | 0.4000 | 0.4500 | | | | 3.00 | 15.00 | 5.00 | SOIC-8PP | Now | Now |
| AM7202N | Single N | 200 | 20 | 0.0870 | 0.0920 | | | | 6.20 | | 5.00 | SOIC-8PP | Now | Now |
| AM7400N | Single N | 30 | 20 | 0.0025 | 0.0040 | | | | 37.00 | 65.00 | 5.00 | SOIC-8PP | Now | Now |
| AM7401P | Single P | -150 | 20 | 0.1400 | 0.1500 | | | | 4.90 | 110.00 | 5.00 | SOIC-8PP | Now | Now |
| AM7403P | Single P | -200 | 20 | | | | | | | | 5.00 | SOIC-8PP | Now | Now |
| AM7410N | Single N | 100 | 20 | 0.0150 | 0.0190 | | | | 15.00 | 60.00 | 5.00 | SOIC-8PP | Now | Now |
| AM7411P | Single P | -100 | 20 | 0.0950 | 0.1250 | | | | 6.00 | 25.00 | 5.00 | SOIC-8PP | Now | Now |
| AM7412N | Single N | 100 | 20 | 0.0420 | 0.0480 | | | | 9.00 | | 5.00 | SOIC-8PP | Jan-13 | Now |
| AM7420N | Single N | 20 | 8 | | 0.0025 | | 0.0040 | | 37.00 | 65.00 | 5.00 | SOIC-8PP | Now | Now |
| AM7421P | Single P | -20 | 8 | 0.0084 | 0.0104 | | | | 20.00 | 66.00 | 5.00 | SOIC-8PP | Now | Now |
| AM7423P | Single P | -20 | 8 | 0.0050 | 0.0070 | | | | 26.00 | 240.00 | 5.00 | SOIC-8PP | Now | Now |
| AM7430N | Single N | 30 | 20 | 0.0130 | 0.0200 | | | | 17.00 | 12.50 | 5.00 | SOIC-8PP | Now | Now |
| AM7431P | Single P | -30 | 20 | 0.0130 | 0.0190 | | | | 17.00 | 25.00 | 5.00 | SOIC-8PP | Now | Now |
| AM7432N | Single N | 30 | 12 | | 0.0049 | | 0.0059 | | 24.00 | 25.00 | 5.00 | SOIC-8PP | Now | Now |
| AM7433P | Single P | -30 | 20 | 0.0090 | 0.0130 | | | | 27.00 | 25.00 | 5.00 | SOIC-8PP | Now | Now |
| AM7434N | Single N | 30 | 20 | 0.0049 | 0.0059 | | | | 27.00 | 25.00 | 5.00 | SOIC-8PP | Now | Now |
| AM7435P | Single P | -30 | 20 | 0.0058 | 0.0076 | | | | 24.00 | 120.00 | 5.00 | SOIC-8PP | Now | Now |
| AM7436N | Single N | 30 | 20 | 0.0046 | 0.0055 | | | | 67.00 | 15.00 | 5.00 | SOIC-8PP | Now | Now |
| AM7438N | Single N | 30 | 20 | 0.0085 | 0.0115 | | | | 21.00 | 11.00 | 5.00 | SOIC-8PP | Now | Now |
| AM7440N | Single N | 40 | 20 | 0.0150 | 0.0180 | | | | 15.00 | 4.00 | 5.00 | SOIC-8PP | Now | Now |
| AM7441P | Single P | -40 | 20 | 0.0076 | 0.0080 | | | | 21.00 | 120.00 | 5.00 | SOIC-8PP | Now | Now |
| AM7442N | Single N | 40 | 20 | 0.0090 | 0.0120 | | | | 20.00 | 25.00 | 5.00 | SOIC-8PP | Now | Now |
| AM7444N | Single N | 40 | 20 | 0.0030 | 0.0050 | | | | 34.00 | 50.00 | 5.00 | SOIC-8PP | Now | Now |
| AM7450N | Single N | 60 | 20 | 0.0080 | 0.0090 | | | | 20.00 | | 5.00 | SOIC-8PP | Jan-13 | Now |
| AM7460N | Single N | 60 | 20 | 0.0260 | 0.0360 | | | | 12.00 | 15.00 | 5.00 | SOIC-8PP | Now | Now |
| AM7461P | Single P | -60 | 20 | 0.0450 | 0.0600 | | | | 10.00 | 15.30 | 5.00 | SOIC-8PP | Now | Now |
| AM7462N | Single N | 60 | 20 | 0.0220 | 0.0260 | | | | 13.00 | 15.00 | 5.00 | SOIC-8PP | Now | Now |
| AM7463P | Single P | -60 | 20 | 0.0120 | 0.0140 | | | | 17.00 | 110.00 | 5.00 | SOIC-8PP | Now | Now |
| AM7464N | Single N | 60 | 20 | 0.0820 | 0.1150 | | | | 6.40 | 15.00 | 5.00 | SOIC-8PP | Now | Now |
| AM7466N | Single N | 60 | 20 | 0.0080 | 0.0090 | | | | 20.00 | 15.00 | 5.00 | SOIC-8PP | Now | Now |
| AM7468N | Single N | 60 | 20 | 0.0170 | 0.0210 | | | | 15.00 | 20.00 | 5.00 | SOIC-8PP | Now | Now |
| AM7480N | Single N | 80 | 20 | 0.0260 | 0.0360 | | | | 12.00 | 15.00 | 5.00 | SOIC-8PP | Now | Now |
| AM7481P | Single P | -80 | 20 | 0.0750 | 0.0900 | | | | -6.70 | 25.00 | 5.00 | SOIC-8PP | Now | Now |
| AM7482N | Single N | 80 | 20 | 0.0110 | 0.0130 | | | | 18.00 | 60.00 | 5.00 | SOIC-8PP | Now | Now |
| AM7483P | Single P | -80 | 20 | 0.0490 | 0.0550 | | | | -8.30 | 100.00 | 5.00 | SOIC-8PP | Now | Now |
| AM7490N | Single N | 150 | 20 | 0.0480 | 0.0540 | | | | 8.40 | 50.00 | 5.00 | SOIC-8PP | Now | Now |
| AM7492N | Single N | 150 | 20 | 0.0880 | 0.0960 | | | | 5.60 | 20.00 | 5.00 | SOIC-8PP | Now | Now |
| AM7496N | Single N | 150 | 20 | 0.2200 | 0.2300 | | | | 3.90 | 11.00 | 5.00 | SOIC-8PP | Jan-13 | Now |
| AM7498N | Single N | 150 | 20 | 0.3600 | 0.3700 | | | | 3.10 | 6.00 | 5.00 | SOIC-8PP | Jan-13 | Now |
| AM7500C | Complementary N | 150 | 20 | 0.2200 | 0.2300 | | | | 6.20 | 8.00 | 3.50 | SOIC-8PP | Now | Now |
| | Complementary P | -150 | 20 | 0.5600 | 0.5900 | | | | -3.20 | 13.00 | | | | |
| AM7510C | Complementary N | 100 | 20 | 0.0620 | 0.0720 | | | | 6.20 | 8.00 | 3.50 | SOIC-8PP | Now | Now |
| | Complementary P | -100 | 20 | 0.2290 | 0.2480 | | | | -3.20 | 13.00 | | | | |
| AM7530C | Complementary N | 30 | 8 | | 0.0580 | | 0.0820 | | 7.00 | 6.30 | 3.50 | SOIC-8PP | Now | Now |
| | Complementary P | -30 | 8 | | 0.1120 | | 0.1720 | | 6.00 | 10.00 | | | | |
| AM7920N | Dual N | 20 | 8 | | 0.0100 | | 0.0130 | | 6.70 | 25.00 | 3.50 | SOIC-8PP | Now | Now |
| AM7930N | Dual N | 30 | 20 | 0.0080 | 0.0120 | | | | 6.70 | 25.00 | 3.50 | SOIC-8PP | Now | Now |
| AM7931P | Dual P | -30 | 20 | 0.0130 | 0.0180 | | | | 14.00 | 25.00 | 3.50 | SOIC-8PP | Now | Now |
| AM7940N | Dual N | 40 | 20 | 0.0100 | 0.0130 | | | | 6.70 | 25.00 | 3.50 | SOIC-8PP | Now | Now |
| AM7961P | Dual P | -60 | 20 | 0.0380 | 0.0450 | | | | 6.70 | 25.00 | 3.50 | SOIC-8PP | Now | Now |



TO-252 (DPAK)



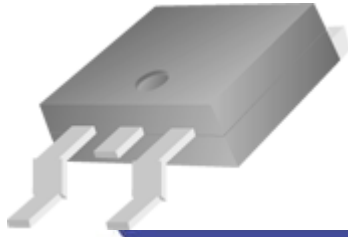
| Part Number | Configuration | V _{DS} (V) | V _{GS} (V) | r _{DS(ON)} Max. (Ω) @ V _{GS} = | | | | | I _D (A) Max. | Q _g (nC) Typ. | P _D (W) Max. | Package | Sample Schedule | Production Schedule |
|--------------|---------------|---------------------|---------------------|--|--------|------|--------|------|-------------------------|--------------------------|-------------------------|---------|-----------------|---------------------|
| | | | | 10V | 4.5V | 3.5V | 2.5V | 1.8V | | | | | | |
| AM50P02-16D | Single P | -20 | 8 | | 0.0180 | | 0.0280 | | 44.00 | 30.00 | 50.00 | TO-252 | Now | Now |
| AM50P02-09D | Single P | -20 | 12 | | 0.0090 | | 0.0130 | | 61.00 | 66.00 | 50.00 | TO-252 | Now | Now |
| AM40P02-20D | Single P | -20 | 12 | | 0.0200 | | 0.0350 | | 41.00 | 30.00 | 50.00 | TO-252 | Now | Now |
| AM20P02-60D | Single P | -20 | 12 | | 0.0590 | | 0.0950 | | 24.00 | 16.70 | 50.00 | TO-252 | Now | Now |
| AM20P02-99D | Single P | -20 | 12 | | 0.1180 | | 0.1780 | | 17.00 | 12.20 | 50.00 | TO-252 | Now | Now |
| AM25P03-60D | Single P | -30 | 12 | | 0.0590 | | 0.0950 | | 24.00 | 25.00 | 50.00 | TO-252 | Now | Now |
| AM70P03-07D | Single P | -30 | 20 | 0.0076 | 0.0130 | | | | 67.00 | 90.00 | 50.00 | TO-252 | Now | Now |
| AM50P03-09D | Single P | -30 | 20 | 0.0090 | 0.0130 | | | | 61.00 | 37.00 | 50.00 | TO-252 | Now | Now |
| AM40P03-20D | Single P | -30 | 20 | 0.0200 | 0.0330 | | | | 41.00 | 15.30 | 50.00 | TO-252 | Now | Now |
| AM40P03-34D | Single P | -30 | 20 | 0.0340 | 0.0550 | | | | 32.00 | 14.00 | 50.00 | TO-252 | Now | Now |
| AM20P03-60D | Single P | -30 | 20 | 0.0590 | 0.0950 | | | | 24.00 | 6.40 | 50.00 | TO-252 | Now | Now |
| AM60P04-10D | Single P | -40 | 20 | 0.0100 | 0.0130 | | | | 58.00 | 15.30 | 50.00 | TO-252 | Now | Now |
| AM50P04-20D | Single P | -40 | 20 | 0.0200 | 0.0270 | | | | 45.00 | 19.00 | 50.00 | TO-252 | Now | Now |
| AM40P04-20D | Single P | -40 | 20 | 0.0300 | 0.0400 | | | | 36.00 | 15.30 | 50.00 | TO-252 | Now | Now |
| AM40P04-20DE | Single P | -40 | 20 | 0.0300 | 0.0400 | | | | 36.00 | 13.90 | 50.00 | TO-252 | Now | Now |
| AM20P04-60D | Single P | -40 | 20 | 0.0690 | 0.1060 | | | | 22.00 | 10.00 | 50.00 | TO-252 | Now | Now |
| AM50P06-15D | Single P | -60 | 20 | 0.0170 | 0.0230 | | | | 45.00 | 46.00 | 50.00 | TO-252 | Now | Now |
| AM30P06-45D | Single P | -60 | 20 | 0.0490 | 0.0600 | | | | 28.00 | 18.00 | 50.00 | TO-252 | Now | Now |
| AM20P06-135D | Single P | -60 | 20 | 0.1300 | 0.1900 | | | | 16.00 | 18.00 | 50.00 | TO-252 | Now | Now |
| AM20P10-250D | Single P | -100 | 20 | 0.2950 | 0.5900 | | | | 11.00 | 18.00 | 50.00 | TO-252 | Now | Now |
| AM10P10-530D | Single P | -100 | 20 | 0.5300 | 0.6100 | | | | 8.00 | 3.00 | 50.00 | TO-252 | Now | Now |
| AM20P15-295D | Single P | -150 | 20 | 0.2950 | 0.5800 | | | | 11.00 | 10.00 | 50.00 | TO-252 | Now | Now |



TO-252 (DPAK)



| Part Number | Configuration | V _{DS} (V) | V _{GS} (V) | r _{DS(ON)} Max. (Ω) @ V _{GS} = | | | | | I _D (A) Max. | Q _g (nC) Typ. | P _D (W) Max. | Package | Sample Schedule | Production Schedule |
|--------------|---------------|---------------------|---------------------|--|--------|------|--------|------|-------------------------|--------------------------|-------------------------|---------|-----------------|---------------------|
| | | | | 10V | 4.5V | 3.5V | 2.5V | 1.8V | | | | | | |
| AM60N02-10D | Single N | 20 | 8 | | 0.0100 | | 0.0160 | | 58.00 | 4.00 | 50.00 | TO-252 | Now | Now |
| AM30N02-40D | Single N | 20 | 12 | | 0.0290 | | 0.0430 | | 34.00 | 13.40 | 50.00 | TO-252 | Now | Now |
| AM30N02-59D | Single N | 20 | 12 | | 0.0590 | | 0.0880 | | 24.00 | 7.50 | 50.00 | TO-252 | Now | Now |
| AM35N03-40D | Single N | 30 | 12 | | 0.0290 | | 0.0430 | | 34.00 | 6.00 | 50.00 | TO-252 | Now | Now |
| AM35N03-59D | Single N | 30 | 12 | | 0.0590 | | 0.0880 | | 24.00 | 6.30 | 50.00 | TO-252 | Now | Now |
| AM90N03-04D | Single N | 30 | 20 | 0.0045 | 0.0055 | | | | 87.00 | 71.00 | 50.00 | TO-252 | Now | Now |
| AM70N03-04D | Single N | 30 | 20 | 0.0060 | 0.0080 | | | | 75.00 | 25.50 | 50.00 | TO-252 | Now | Now |
| AM70N03-08D | Single N | 30 | 20 | 0.0080 | 0.0010 | | | | 75.00 | 25.50 | 50.00 | TO-252 | Now | Now |
| AM50N03-12D | Single N | 30 | 20 | 0.0130 | 0.0200 | | | | 51.00 | 12.50 | 50.00 | TO-252 | Now | Now |
| AM30N03-40D | Single N | 30 | 20 | 0.0260 | 0.0350 | | | | 34.00 | 4.00 | 50.00 | TO-252 | Now | Now |
| AM30N03-59D | Single N | 30 | 20 | 0.0590 | 0.0880 | | | | 24.00 | 2.20 | 50.00 | TO-252 | Now | Now |
| AM70N04-06D | Single N | 40 | 20 | 0.0060 | 0.0080 | | | | 75.00 | 4.00 | 50.00 | TO-252 | Now | Now |
| AM60N04-12D | Single N | 40 | 20 | 0.0120 | 0.0140 | | | | 53.00 | 4.00 | 50.00 | TO-252 | Now | Now |
| AM40N04-20D | Single N | 40 | 20 | 0.0220 | 0.0270 | | | | 39.00 | 20.00 | 50.00 | TO-252 | Now | Now |
| AM40N04-30D | Single N | 40 | 20 | 0.0320 | 0.0420 | | | | 33.00 | 5.00 | 50.00 | TO-252 | Now | Now |
| AM40N04-30DE | Single N | 40 | 20 | 0.0320 | 0.0420 | | | | 33.00 | 5.00 | 50.00 | TO-252 | Now | Now |



TO-252 (DPAK)

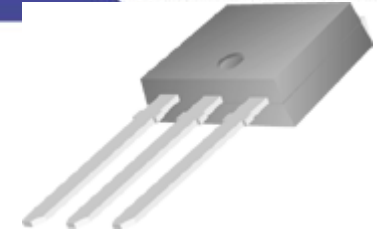


| Part Number | Configuration | V _{DS} (V) | V _{GS} (V) | r _{DS(ON)} Max. (Ω) @ V _{GS} = | | | | | I _D (A) Max. | Q _g (nC) Typ. | P _D (W) Max. | Package | Sample Schedule | Production Schedule |
|---------------|---------------|---------------------|---------------------|--|--------|--------|------|------|-------------------------|--------------------------|-------------------------|---------|-----------------|---------------------|
| | | | | 10V | 4.5V | 3.5V | 2.5V | 1.8V | | | | | | |
| AM90N06-04D | Single N | 60 | 20 | 0.0040 | 0.0050 | | | | 92.00 | | 50.00 | TO-252 | Jan-13 | Now |
| AM80N06-05D | Single N | 60 | 20 | 0.0059 | 0.0066 | | | | 76.00 | 70.00 | 50.00 | TO-252 | Now | Now |
| AM50N06-15D | Single N | 60 | 20 | 0.0130 | 0.0180 | | | | 51.00 | 12.50 | 50.00 | TO-252 | Now | Now |
| AM50N06-20D | Single N | 60 | 20 | 0.0200 | 0.0290 | | | | 41.00 | 16.00 | 50.00 | TO-252 | Now | Now |
| AM45N06-16D | Single N | 60 | 12 | | 0.0160 | 0.0190 | | | 46.00 | | 50.00 | TO-252 | Jan-13 | Now |
| AM40N06-28D | Single N | 60 | 20 | 0.0280 | 0.0300 | | | | 35.00 | 26.00 | 50.00 | TO-252 | Now | Now |
| AM30N06-39D | Single N | 60 | 20 | 0.0380 | 0.0500 | | | | 30.00 | 12.50 | 50.00 | TO-252 | Now | Now |
| AM20N06-90D | Single N | 60 | 20 | 0.0940 | 0.1090 | | | | 19.00 | 3.60 | 50.00 | TO-252 | Now | Now |
| AM50N08-14D | Single N | 80 | 20 | 0.0140 | 0.0160 | | | | 49.00 | 110.00 | 50.00 | TO-252 | Now | Now |
| AM40N08-30D | Single N | 80 | 20 | 0.0260 | 0.0360 | | | | 30.00 | 15.00 | 50.00 | TO-252 | Now | Now |
| AM30N08-80D | Single N | 80 | 20 | 0.0820 | 0.1100 | | | | 21.00 | 19.00 | 50.00 | TO-252 | Now | Now |
| AM50N10-18D | Single N | 100 | 20 | 0.0180 | 0.0230 | | | | 44.00 | 51.00 | 50.00 | TO-252 | Now | Now |
| AM40N10-30D | Single N | 100 | 20 | 0.0360 | 0.0420 | | | | 26.00 | 14.80 | 50.00 | TO-252 | Now | Now |
| AM30N10-50D | Single N | 100 | 20 | 0.0500 | 0.0590 | | | | 26.00 | 25.00 | 50.00 | TO-252 | Now | Now |
| AM30N10-70D | Single N | 100 | 20 | 0.0780 | 0.0920 | | | | 21.00 | 19.00 | 50.00 | TO-252 | Now | Now |
| AM30N10-70DE | Single N | 100 | 20 | 0.0780 | 0.0920 | | | | 21.00 | 19.00 | 50.00 | TO-252 | Now | Now |
| AM20N10-130D | Single N | 100 | 20 | 0.1300 | 0.1600 | | | | 17.00 | 4.00 | 50.00 | TO-252 | Now | Now |
| AM20N10-250D | Single N | 100 | 20 | 0.2800 | 0.3550 | | | | 11.00 | 1.40 | 50.00 | TO-252 | Now | Now |
| AM20N10-250DE | Single N | 100 | 20 | 0.2800 | 0.3550 | | | | 11.00 | 10.00 | 50.00 | TO-252 | Now | Now |
| AM20N10-350D | Single N | 100 | 20 | 0.4100 | 0.4500 | | | | 10.00 | 1.40 | 50.00 | TO-252 | Now | Now |
| AM30N15-60D | Single N | 150 | 20 | 0.0690 | 0.1100 | | | | 22.00 | 20.00 | 50.00 | TO-252 | Now | Now |
| AM20N15-250D | Single N | 150 | 20 | 0.2550 | 0.2900 | | | | 12.00 | 19.00 | 50.00 | TO-252 | Now | Now |
| AM8N20-600D | Single N | 200 | 20 | 0.6000 | 1.0000 | | | | 7.50 | | 50.00 | TO-252 | Now | Now |
| AM20N20-125D | Single N | 200 | 20 | 0.2600 | 0.3000 | | | | 12.00 | 19.00 | 50.00 | TO-252 | Now | Now |
| AM10N20-400D | Single N | 200 | 20 | 0.4000 | 0.4500 | | | | 9.20 | 19.00 | 50.00 | TO-252 | Now | Now |
| AM14N25-280D | Single N | 250 | 20 | 0.2800 | 0.3000 | | | | 11.00 | | 50.00 | TO-252 | Now | Now |
| AM8N25-550D | Single N | 250 | 20 | 0.5500 | 0.7000 | | | | 8.00 | 8.00 | 50.00 | TO-252 | Now | Now |

TO-251 (IPAK)

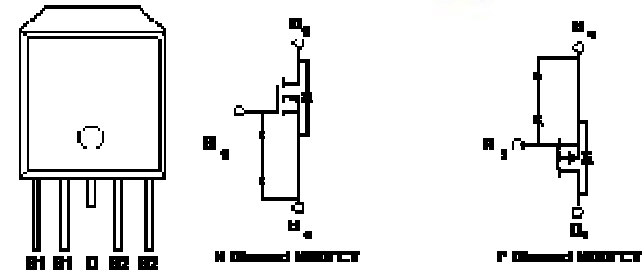


ANALOG POWER

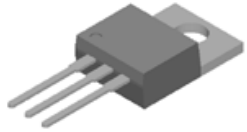


| Part Number | Configuration | V _{DS} (V) | V _{GS} (V) | r _{DS(ON)} Max. (Ω) @ V _{GS} = | | | | | I _D (A) Max. | Q _g (nC) Typ. | P _D (W) Max. | Package | Sample Schedule | Production Schedule |
|--------------|---------------|---------------------|---------------------|--|--------|------|------|------|-------------------------|--------------------------|-------------------------|---------|-----------------|---------------------|
| | | | | 10V | 4.5V | 3.5V | 2.5V | 1.8V | | | | | | |
| AM20P03-60I | Single P | -30 | 20 | 0.0590 | 0.0950 | | | | 24.00 | 6.40 | 50.00 | TO-251 | Now | Now |
| AM40P03-20I | Single P | -30 | 20 | 0.0200 | 0.0350 | | | | 41.00 | 15.30 | 50.00 | TO-251 | Now | Now |
| AM90N03-04I | Single N | 30 | 20 | 0.0045 | 0.0055 | | | | 87.00 | 71.00 | 50.00 | TO-251 | Now | Now |
| AM50N03-12I | Single N | 30 | 20 | 0.0130 | 0.0200 | | | | 51.00 | 4.00 | 50.00 | TO-251 | Now | Now |
| AM20N06-90I | Single N | 60 | 20 | 0.0940 | 0.1090 | | | | 19.00 | 3.60 | 50.00 | TO-251 | Now | Now |
| AM30N06-39IE | Single N | 60 | 20 | 0.0380 | 0.0500 | | | | 30.00 | 12.50 | 50.00 | TO-251 | Now | Now |
| AM10N30-600I | Single N | 300 | 20 | 0.6000 | 0.9000 | | | | 7.50 | 19.00 | 50.00 | TO-251 | Now | Now |

DPAK-4L



| Part Number | Configuration | V _{DS} (V) | V _{GS} (V) | r _{DS(ON)} Max. (Ω) @ V _{GS} = | | | | | I _D (A) Max. | Q _g (nC) Typ. | P _D (W) Max. | Package | Sample Schedule | Production Schedule |
|-------------|-----------------|---------------------|---------------------|--|--------|------|--------|------|-------------------------|--------------------------|-------------------------|---------|-----------------|---------------------|
| | | | | 10V | 4.5V | 3.5V | 2.5V | 1.8V | | | | | | |
| AMD530C | Complementary N | 30 | 12 | | 0.0350 | | 0.0450 | | 36.00 | 6.00 | 50.00 | TO-252 | Now | Now |
| | Complementary P | -30 | 12 | | 0.0520 | | 0.0700 | | 26.00 | 25.00 | | | | |
| AMD531C | Complementary N | 30 | 20 | 0.0160 | 0.0200 | | | | 51.00 | 12.00 | 50.00 | TO-252 | Now | Now |
| | Complementary P | -30 | 20 | 0.0230 | 0.0330 | | | | 41.00 | 13.00 | | | | |
| AMD532C | Complementary N | 30 | 12 | | 0.0590 | | 0.0950 | | 24.00 | 6.30 | 50.00 | TO-252 | Now | Now |
| | Complementary P | -30 | 12 | | 0.1180 | | 0.1780 | | 17.00 | 10.00 | | | | |
| AMD533CE | Complementary N | 30 | 20 | 0.0350 | 0.0450 | | | | 36.00 | 6.00 | 50.00 | TO-252 | Now | Now |
| | Complementary P | -30 | 20 | 0.0520 | 0.0700 | | | | 26.00 | 25.00 | | | | |
| AMD534C | Complementary N | 30 | 20 | 0.0350 | 0.0450 | | | | 36.00 | 6.00 | 50.00 | TO-252 | Now | Now |
| | Complementary P | -30 | 20 | 0.0230 | 0.0330 | | | | 39.00 | 10.00 | | | | |
| AMD534CE | Complementary N | 30 | 20 | 0.0350 | 0.0450 | | | | 36.00 | 6.00 | 50.00 | TO-252 | Now | Now |
| | Complementary P | -30 | 20 | 0.0230 | 0.0330 | | | | 39.00 | 10.00 | | | | |
| AMD540CE | Complementary N | 40 | 20 | 0.0360 | 0.0460 | | | | 33.00 | 12.00 | 50.00 | TO-252 | Now | Now |
| | Complementary P | -40 | 20 | 0.0380 | 0.0480 | | | | 33.00 | 13.00 | | | | |

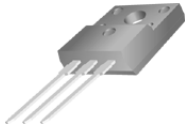


TO-220



ANALOG POWER

| Part Number | Configuration | V _{DS} (V) | V _{GS} (V) | r _{DS(ON)} Max. (Ω) @ V _{GS} = | | | | | I _D (A) Max. | Q _g (nC) Typ. | P _D (W) Max. | Package | Sample Schedule | Production Schedule |
|--------------|---------------|---------------------|---------------------|--|--------|--------|------|------|-------------------------|--------------------------|-------------------------|---------|-----------------|---------------------|
| | | | | 10V | 4.5V | 3.5V | 2.5V | 1.8V | | | | | | |
| AM90P02-02P | Single P | -20 | 8 | | 0.0029 | 0.0038 | | | 90.00 | 480.00 | 300.00 | TO-220 | Now | Now |
| AM90P02-05P | Single P | -20 | 8 | | 0.0050 | 0.0070 | | | 90.00 | 240.00 | 300.00 | TO-220 | Now | Now |
| AM90P03-02P | Single P | -30 | 20 | 0.0029 | 0.0038 | | | | 90.00 | 120.00 | 300.00 | TO-220 | Now | Now |
| AM90P03-03P | Single P | -30 | 20 | 0.0058 | 0.0076 | | | | 90.00 | 120.00 | 300.00 | TO-220 | Now | Now |
| AM90P04-03P | Single P | -40 | 20 | 0.0038 | 0.0047 | | | | 90.00 | 120.00 | 300.00 | TO-220 | Now | Now |
| AM90P04-07P | Single P | -40 | 20 | 0.0076 | 0.0080 | | | | 90.00 | 120.00 | 300.00 | TO-220 | Now | Now |
| AM90P06-08P | Single P | -60 | 20 | 0.0120 | 0.0140 | | | | 90.00 | 110.00 | 300.00 | TO-220 | Now | Now |
| AM40P06-135P | Single P | -60 | 20 | 0.1350 | 0.1580 | | | | 39.00 | 19.00 | 300.00 | TO-220 | Now | Now |
| AM90P10-30P | Single P | -100 | 20 | 0.0300 | 0.0350 | | | | 78.00 | 140.00 | 300.00 | TO-220 | Now | Now |
| AM50P10-117P | Single P | -100 | 20 | 0.1170 | 0.2000 | | | | 42.00 | 70.00 | 300.00 | TO-220 | Now | Now |
| AM40P10-200P | Single P | -100 | 20 | 0.2000 | 0.3000 | | | | 32.00 | 20.00 | 300.00 | TO-220 | Now | Now |
| AM90P15-30P | Single P | -150 | 20 | 0.0750 | 0.0800 | | | | 70.00 | | 300.00 | TO-220 | Now | Now |
| AM90P15-60P | Single P | -150 | 20 | 0.1600 | 0.1740 | | | | 70.00 | | 300.00 | TO-220 | Now | Now |
| AM90N02-01P | Single N | 20 | 8 | | 0.0019 | 0.0023 | | | 90.00 | 140.00 | 300.00 | TO-220 | Now | Now |
| AM90N03-01P | Single N | 30 | 20 | 0.0019 | 0.0023 | | | | 90.00 | 140.00 | 300.00 | TO-220 | Now | Now |
| AM110N03-03P | Single N | 30 | 20 | 0.0025 | 0.0040 | | | | 110.00 | 70.00 | 300.00 | TO-220 | Now | Now |
| AM90N03-08P | Single N | 30 | 20 | 0.0080 | 0.0120 | | | | 90.00 | 20.00 | 300.00 | TO-220 | Now | Now |
| AM90N03-26P | Single N | 30 | 20 | 0.0260 | 0.0400 | | | | 88.00 | 20.00 | 300.00 | TO-220 | Now | Now |
| AM90N04-02P | Single N | 40 | 20 | 0.0023 | 0.0030 | | | | 90.00 | 140.00 | 300.00 | TO-220 | Now | Now |
| AM202N04-04P | Single N | 40 | 20 | 0.0046 | 0.0060 | | | | 202.00 | 70.00 | 300.00 | TO-220 | Now | Now |
| AM90N04-03P | Single N | 40 | 20 | 0.0050 | 0.0075 | | | | 90.00 | 70.00 | 300.00 | TO-220 | Now | Now |
| AM90N06-03P | Single N | 60 | 20 | 0.0030 | 0.0033 | | | | 90.00 | 140.00 | 300.00 | TO-220 | Now | Now |
| AM110N06-08P | Single N | 60 | 20 | 0.0080 | 0.0130 | | | | 90.00 | 49.00 | 300.00 | TO-220 | Now | Now |
| AM90N06-10P | Single N | 60 | 20 | 0.0099 | 0.0130 | | | | 90.00 | 49.00 | 300.00 | TO-220 | Now | Now |
| AM90N06-15P | Single N | 60 | 20 | 0.0105 | 0.0130 | | | | 90.00 | 49.00 | 300.00 | TO-220 | Now | Now |
| AM90N06-16P | Single N | 60 | 20 | 0.0165 | 0.0210 | | | | 90.00 | 26.00 | 300.00 | TO-220 | Now | Now |
| AM90N06-30P | Single N | 60 | 20 | 0.0265 | 0.0325 | | | | 90.00 | 8.50 | 300.00 | TO-220 | Now | Now |
| AM90N08-05P | Single N | 80 | 20 | 0.0054 | 0.0065 | | | | 90.00 | 120.00 | 300.00 | TO-220 | Now | Now |
| AM90N08-08P | Single N | 80 | 20 | 0.0110 | 0.0130 | | | | 90.00 | 58.00 | 300.00 | TO-220 | Now | Now |
| AM90N10-07P | Single N | 100 | 20 | 0.0070 | 0.0090 | | | | 90.00 | 90.00 | 300.00 | TO-220 | Now | Now |
| AM90N10-14P | Single N | 100 | 20 | 0.0160 | 0.0190 | | | | 90.00 | 49.00 | 300.00 | TO-220 | Now | Now |
| AM70N10-44P | Single N | 100 | 20 | 0.0440 | 0.0640 | | | | 70.00 | 70.00 | 300.00 | TO-220 | Now | Now |
| AM60N10-70P | Single N | 100 | 20 | 0.0780 | 0.0920 | | | | 51.00 | 8.50 | 300.00 | TO-220 | Now | Now |
| AM90N15-20P | Single N | 150 | 20 | 0.0240 | 0.0270 | | | | 90.00 | 50.00 | 300.00 | TO-220 | Now | Now |
| AM70N15-40P | Single N | 150 | 20 | 0.0480 | 0.0540 | | | | 65.00 | 50.00 | 300.00 | TO-220 | Now | Now |
| AM40N20-180P | Single N | 200 | 20 | 0.1800 | 0.3400 | | | | 34.00 | 8.00 | 300.00 | TO-220 | Now | Now |
| AM30N20-400P | Single N | 200 | 20 | 0.4000 | 0.4500 | | | | 23.00 | 8.00 | 300.00 | TO-220 | Now | Now |
| AM30N25-270P | Single N | 250 | 20 | 0.2700 | | | | | 28.00 | | 300.00 | TO-220 | Now | Now |
| AM12N50P | Single N | 500 | 20 | 0.5200 | | | | | 20.00 | 26.00 | 300.00 | TO-220 | Jan-13 | Now |
| AM5N50 | Single N | 500 | 20 | 1.5000 | | | | | 4.50 | 26.00 | 74.00 | TO-220 | Now | Now |
| AM8N60P | Single N | 600 | 20 | 1.0000 | | | | | 15.00 | | 300.00 | TO-220 | Jan-13 | Now |
| AM6N60 | Single N | 600 | 20 | 1.5000 | | | | | 2.60 | 16.00 | 36.00 | TO-220 | Now | Now |
| AM12N65P | Single N | 650 | 20 | 0.8000 | | | | | 17.00 | | 300.00 | TO-220 | Now | Now |
| AM9N65P | Single N | 650 | 20 | 1.3000 | | | | | 13.00 | | 300.00 | TO-220 | Now | Now |



TO-220F/TO-263



ANALOG POWER



| Part Number | Configuration | V _{DS} (V) | V _{GS} (V) | r _{DS(ON)} Max. (Ω) @ V _{GS} = | | | | | I _D (A) Max. | Q _g (nC) Typ. | P _D (W) Max. | Package | Sample Schedule | Production Schedule |
|-----------------|---------------|---------------------|---------------------|--|--------|------|------|------|-------------------------|--------------------------|-------------------------|-----------|-----------------|---------------------|
| | | | | 10V | 4.5V | 3.5V | 2.5V | 1.8V | | | | | | |
| AM50P04-16PCFM | Single P | -40 | 20 | 0.0160 | 0.0280 | | | | 50.00 | 25.00 | 300.00 | TO-220CFM | Now | Now |
| AM40P20-150PCFM | Single P | -200 | 20 | 0.1500 | 0.2800 | | | | 37.00 | 25.00 | 300.00 | TO-220CFM | Now | Now |
| AM90N06-10PCFM | Single N | 60 | 20 | 0.0099 | 0.0130 | | | | 90.00 | 49.00 | 300.00 | TO-220CFM | Now | Now |
| AM90N06-25PCFM | Single N | 60 | 20 | 0.0265 | 0.0325 | | | | 90.00 | 8.50 | 300.00 | TO-220CFM | Now | Now |
| AM60N10-70PCFM | Single N | 100 | 20 | 0.0780 | 0.0920 | | | | 51.00 | 8.50 | 300.00 | TO-220CFM | Now | Now |
| AM80N20-40PCFM | Single N | 200 | 20 | 0.0400 | 0.0460 | | | | 71.00 | 100.00 | 300.00 | TO-220CFM | Now | Now |
| AM30N20-400PCFM | Single N | 200 | 20 | 0.4000 | 0.4500 | | | | 23.00 | 19.00 | 300.00 | TO-220CFM | Now | Now |
| AM110P06-06B | Single P | -60 | 20 | 0.0060 | 0.0070 | | | | 110.00 | 230.00 | 250.00 | TO-263 | Now | Now |
| AM110P08-11B | Single P | -80 | 20 | 0.0112 | 0.0145 | | | | 110.00 | 190.00 | 250.00 | TO-263 | Now | Now |
| AM90N03-03B | Single N | 30 | 20 | 0.0038 | 0.0046 | | | | 90.00 | 70.00 | 250.00 | TO-263 | Now | Now |
| AM90N04-02B | Single N | 40 | 20 | 0.0023 | 0.0030 | | | | 120.00 | 138.00 | 300.00 | TO-263 | Now | Now |
| AM90N08-04B | Single N | 80 | 20 | 0.0050 | 0.0060 | | | | 90.00 | 120.00 | 250.00 | TO-263 | Now | Now |
| AM90N08-10B | Single N | 80 | 20 | 0.0100 | 0.0130 | | | | 90.00 | 60.00 | 250.00 | TO-263 | Now | Now |
| AM90N10-07B | Single N | 100 | 20 | 0.0070 | 0.0090 | | | | 90.00 | 90.00 | 250.00 | TO-263 | Now | Now |
| AM90N15-38B | Single N | 150 | 20 | 0.0380 | 0.0500 | | | | 67.00 | 50.00 | 250.00 | TO-263 | Now | Now |
| AM20N15-250B | Single N | 150 | 20 | 0.2000 | 0.2250 | | | | 21.00 | 16.00 | 250.00 | TO-263 | Now | Now |
| AM90N20-78B | Single N | 200 | 20 | 0.0780 | 0.0900 | | | | 47.00 | | 250.00 | TO-263 | Now | Now |