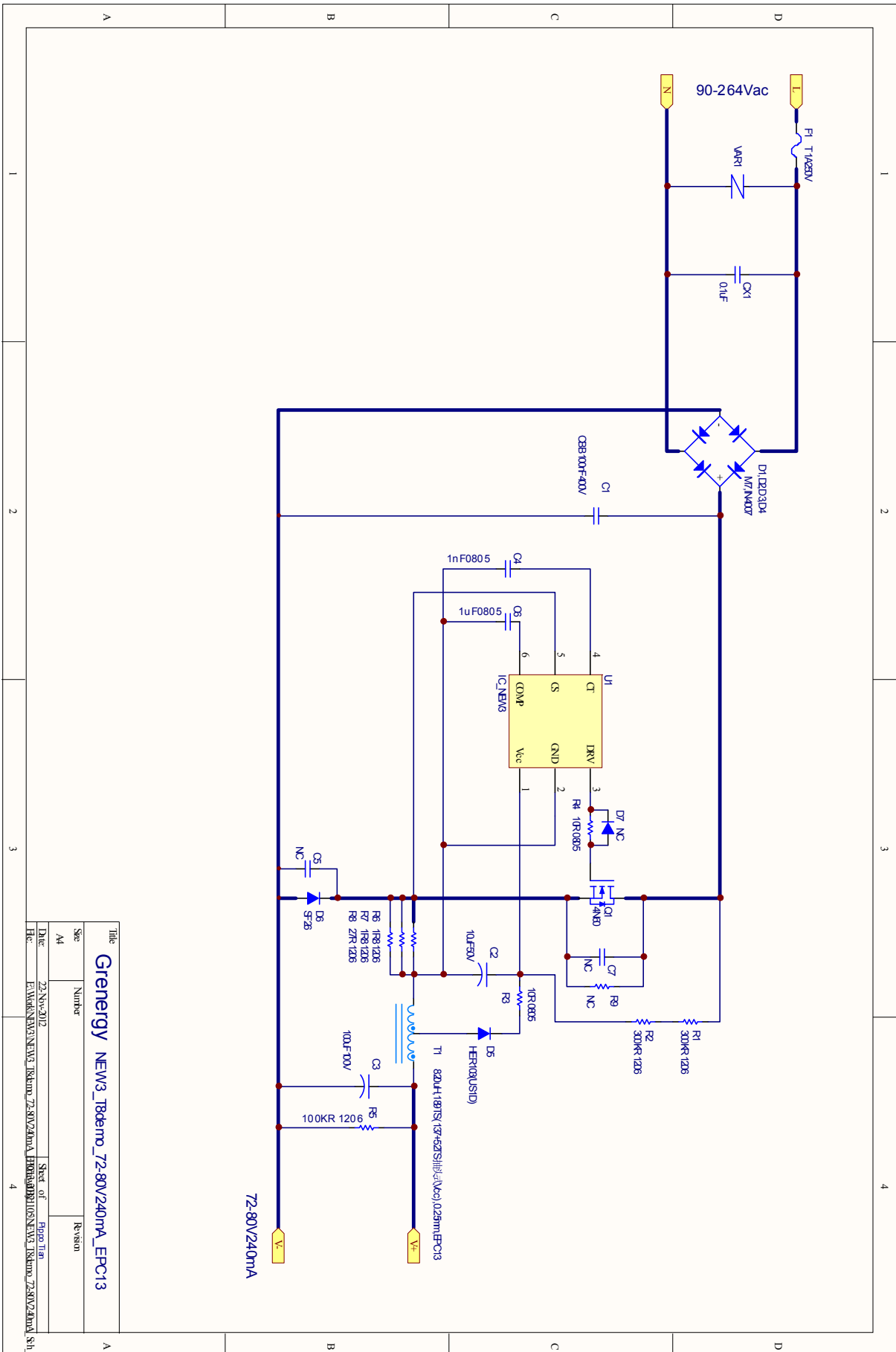


1. Schematic:

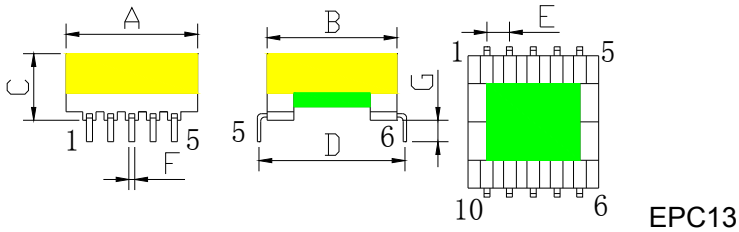


2. BOM:

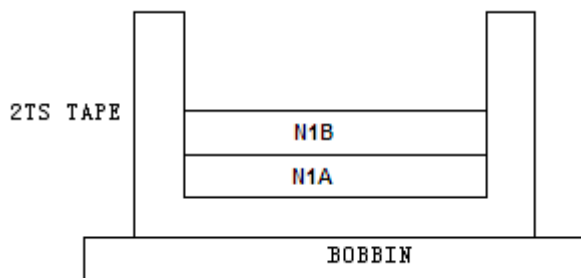
NEW3_T8demo_72-80V240mA_BOM_EPC13_121120			
P/N	Value	Description	Note
U1	NEW3	IC,NEW3	
R1,R2	300KΩ	SMD Res 1206,±5%	
R3	10Ω	SMD Res 0805,±5%	
R4	10Ω	SMD Res 0805,±5%	
R5	100KΩ	SMD Res 1206,±5%	
R6,R7	1.8Ω	SMD Res 1206,±1%	
R8	27Ω	SMD Res 1206,±1%	
C6	1uF/50V	SMD Cap 0805,X7R	
C4	1nF/50V	SMD Cap 0805,NPO	
C2	10uF/50V	Al Cap,105°C	
C3	100uF/100V	Al Cap,105°C	
CX1	0.1uF/275V	X-Cap,20%,13x12x6	
C1	100nF/400V	CBB Cap,20%	
D1,D2,D3,D4	M7	Diode,(IN4007),1A/1000V,SMA	
D5	HER103(US1D)	High Efficient Rectifier,1A200V,50ns	
D6	SF26	Superfast Rectifier,2A400V,35ns	
Q1	4A/600V	MOSFET,N-CH,营格 IPS	
T1	820uH	820uH,189TS(137+52TS 抽头式 Vcc),0.25mm,EPC13	
F1	1A250V	保险丝,T1A250V	
MOV1	7D471K	MOV,7D471K,Φ8	

NEW3_T8demo_36-80V240mA_Trans_EPC13_121120
 820uH,189TS(137+52TS 抽头式 Vcc),0.25mm,EPC13

(一) MECHANICAL DIMENSION (Unit:mm)

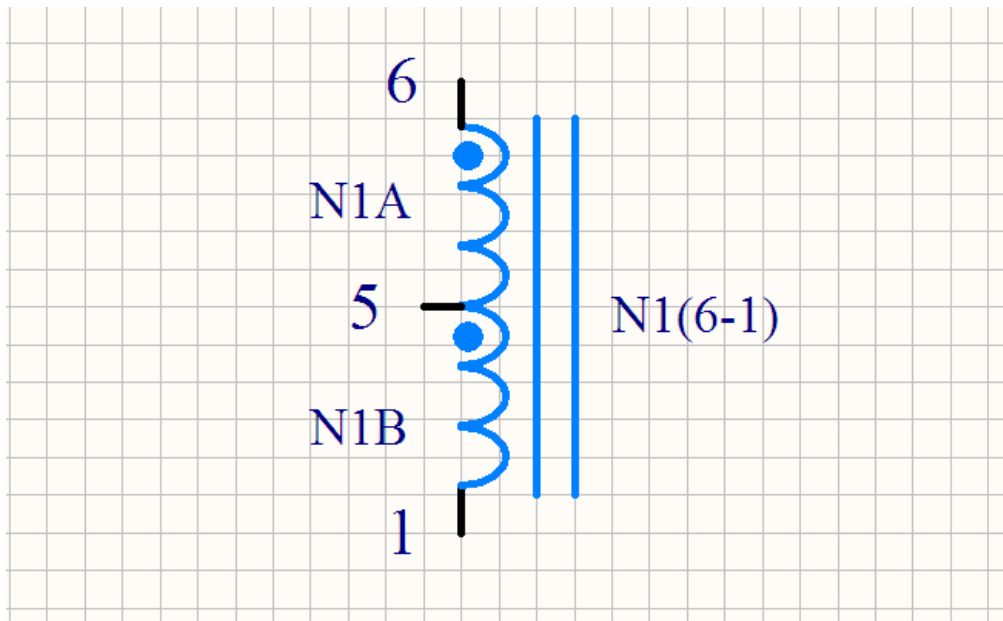


(二) WINDING CONSTRUCTION



产品真空含浸

(三) SCHEMATIC:



(四) WINDING ORDER :

NO	TERMINAL		WIRE	TURNS	Note
	S	F			
N1A	6	5	Φ0.25mm*1(2UEW)	137TS	N1A,N1B 间可不包胶带
N1B	5	1	Φ0.25mm*1(2UEW)	52S	1-5 针脚朝里正绕

N1(6-1)=N1A+N1B=189TS。N1B_52TS 为 VCC 绕组，抽头式。L(6-1):820uH

3. Electrical Performances:

Test Condition: Full Load and After B/I for half an hour.

72-80V240mA						
Vac	90V/60Hz	110V/60Hz	132V/60Hz	180V/50Hz	230V/50Hz	264V/50Hz
Vo(V)	71.825	71.825	71.825	71.825	71.825	71.825
Io(A)	0.236	0.239	0.239	0.240	0.240	0.240
Pin(W)	18.595	18.645	18.655	18.761	18.782	18.922
PF	0.944	0.961	0.957	0.949	0.930	0.923
Eff	91.16%	92.07%	92.02%	91.88%	91.78%	91.10%
Vac	100V/60Hz	110V/60Hz	132V/60Hz	180V/50Hz	230V/50Hz	264V/50Hz
Vo(V)	80.240	80.240	80.240	80.240	80.240	80.240
Io(A)	0.237	0.239	0.239	0.240	0.240	0.240
Pin(W)	20.730	20.747	20.765	20.853	20.886	21.002
PF	0.947	0.962	0.957	0.951	0.933	0.921
Eff	91.74%	92.43%	92.35%	92.35%	92.20%	91.69%

4. Constant Current:

Test Condition: Full Load and After B/I for half an hour.

72-80V240mA							
Vac	90V/60Hz	110V/60Hz	132V/60Hz	180V/50Hz	230V/50Hz	264V/50Hz	Rating
72V	71.825	71.825	71.825	71.825	71.825	71.825	
Io(A)	0.236	0.239	0.239	0.240	0.240	0.240	±1.5%max
80V	80.240	80.240	80.240	80.240	80.240	80.240	
Io(A)	0.237	0.239	0.239	0.240	0.240	0.240	±1.5%max

5. Output shorted protection:

Test Condition: Full Load and After B/I for half an hour.

72-80V240mA					
	Vac	90V/60Hz	110V/60Hz	230V/50Hz	264V/50Hz
Output shorted	Pin(W)	0.02	0.04	0.15	0.46