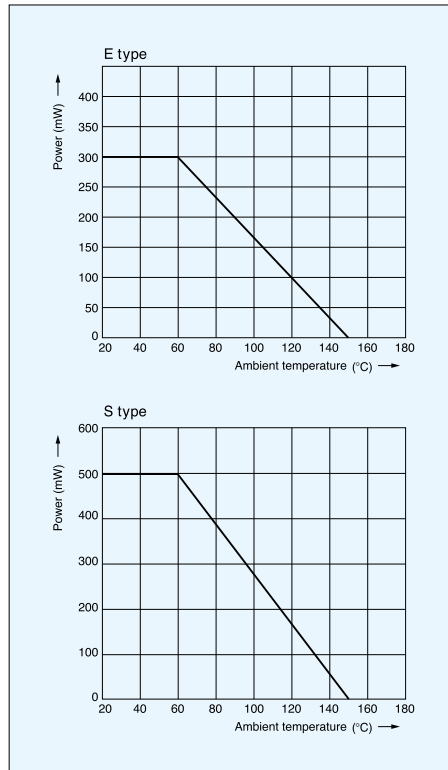
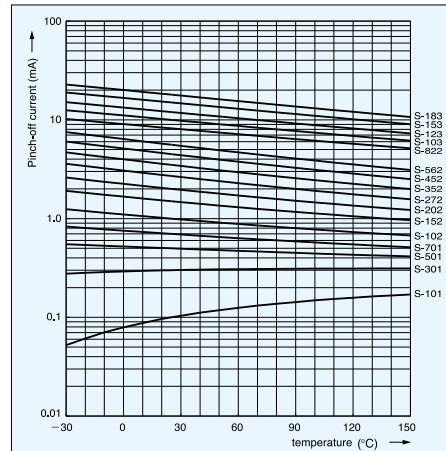


Power derating



Pinch-off current Temperature

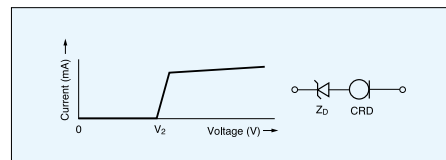


CRD in parallel

The use of CRD in parallel increases their current handling capabilities.

Increasing the voltage range using a zener diode

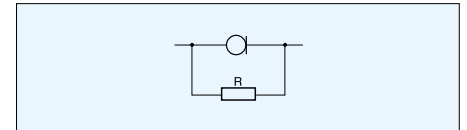
Connecting zener diodes in series with the line ensures that the current is constant in high-voltage area.



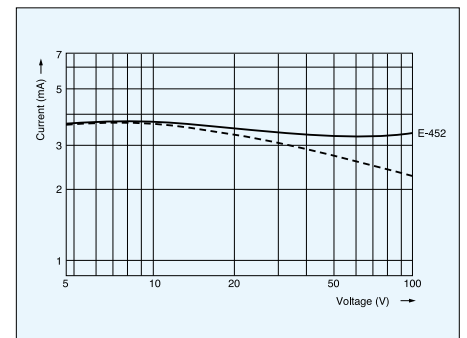
The compensation of current reduction due to self heating

Placing resistors in parallel with CRD can correct any current decrease when the applied voltage increases. The following values are typical for correction resistors.

| | | | |
|-------|-------|-------|------|
| E-102 | 1MΩ | E-352 | 82kΩ |
| E-152 | 390kΩ | E-452 | 56kΩ |
| E-202 | 240kΩ | E-562 | 39kΩ |
| E-272 | 120kΩ | | |



Compensative resistor is not necessary if the current value is less than 1 mA.



Dynamic characteristics (saturation characteristics)

